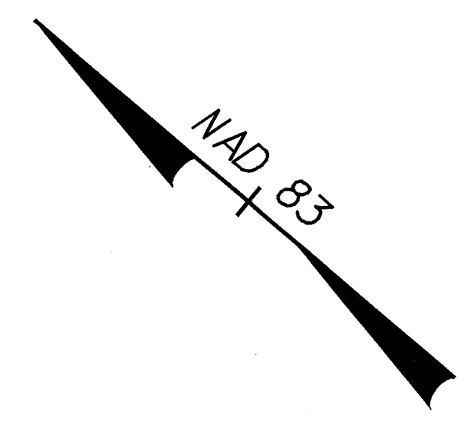
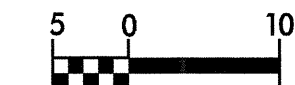


8/17/2000



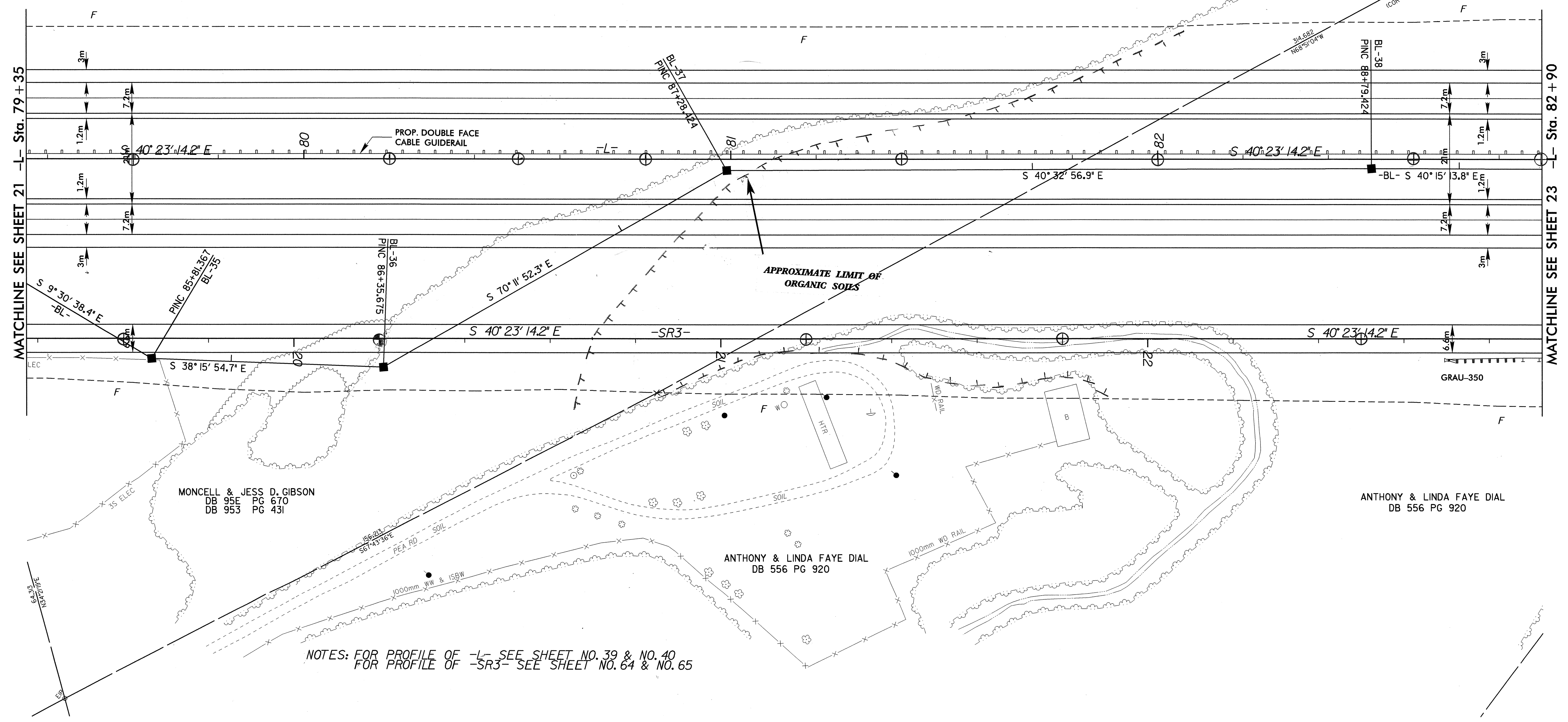
PROJECT REFERENCE NO.	R-05/3A	SHEET NO.	22
R/W SHEET NO.			
ROADWAY DESIGN ENGINEER	MONCELL & JESS D. GIBSON	HYDRAULICS ENGINEER	ANTHONY & LINDA FAYE DIAL
PRELIMINARY PLANS DO NOT USE FOR CONSTRUCTION		INCOMPLETE PLANS DO NOT USE FOR R/W ACQUISITION	
CONST. REV.			
R/W REV.			



MONCELL & JESS D. GIBSON
DB 95E PG 670
DB 953 PG 431

MONCELL & JESS D. GIBSON
DB 95E PG 670
DB 953 PG 431

ANTHONY & LINDA FAYE DIAL
DB 556 PG 920



NOTES: FOR PROFILE OF -L- SEE SHEET NO. 39 & NO. 40
FOR PROFILE OF -SR3- SEE SHEET NO. 64 & NO. 65

05-NOV-2000 09:37
R:\0513A\0513A.dwg
d:\0513a\0513a.dwg