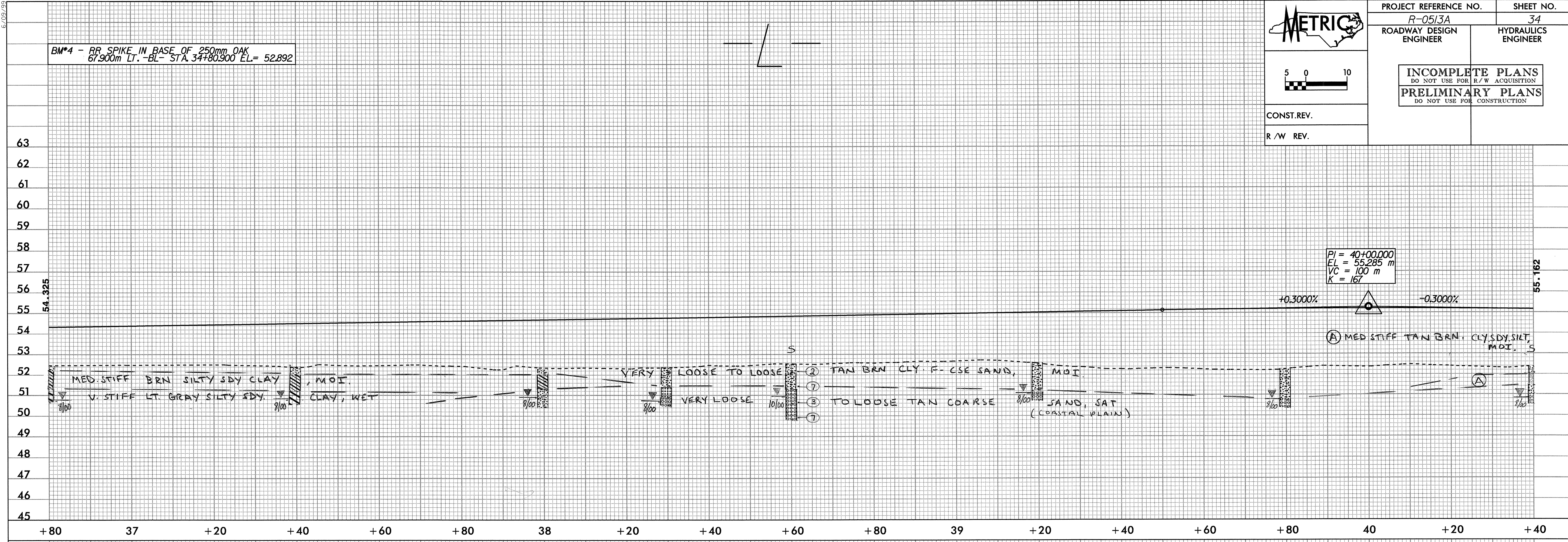


BM#4 - RR SPIKE IN BASE OF 250mm OAK
 67.900m LT. -BL- STA. 34+780.900 EL= 52.892

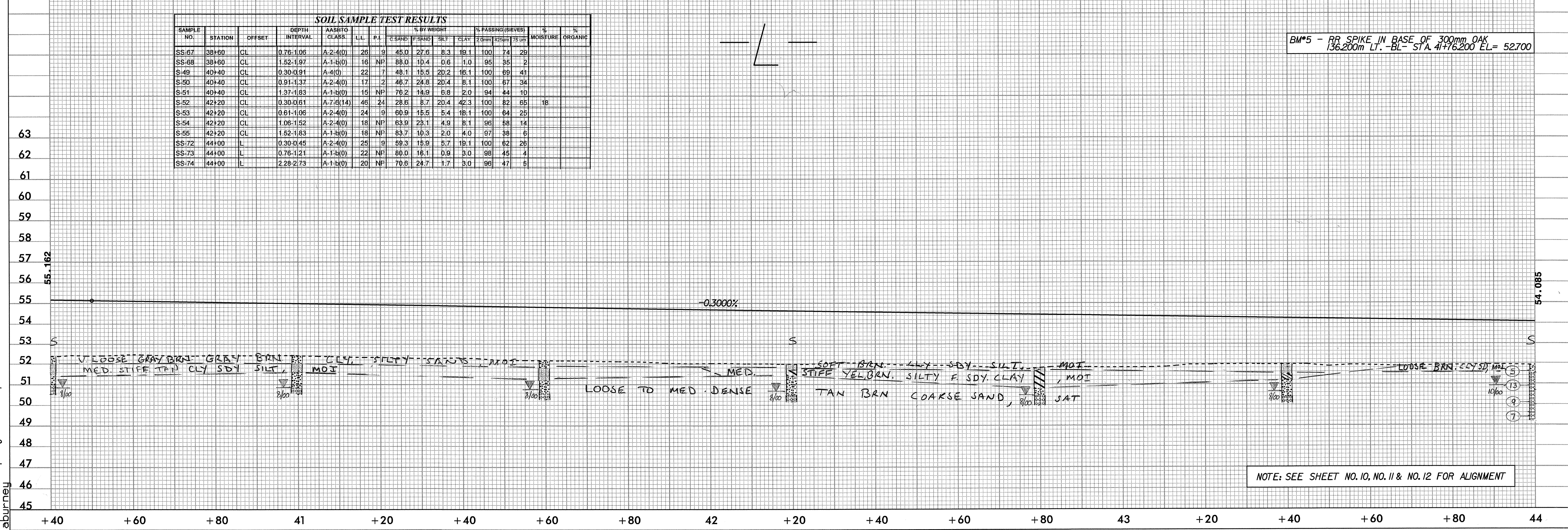
PI = 40+00.000
 EL = 55.285 m
 VC = 100 m
 K = 167



SOIL SAMPLE TEST RESULTS

SAMPLE NO.	STATION	OFFSET	DEPTH INTERVAL	AASHTO CLASS	LL	PI	% BY WEIGHT				% PASSING (SIEVES)			MOISTURE	% ORGANIC
							C SAND	F SAND	SILT	CLAY	2.0mm	4.75mm	75 um		
SS-67	38+60	CL	0.76-1.05	A-2-4(0)	26	9	45.0	27.6	8.3	19.1	100	74	29		
SS-68	38+60	CL	1.52-1.97	A-1-4(0)	16	NP	88.0	10.4	0.6	1.0	95	95	2		
S-49	40+40	CL	0.30-0.91	A-4(0)	22	7	48.1	15.5	20.2	16.1	100	69	41		
S-50	40+40	CL	0.91-1.37	A-2-4(0)	17	2	46.7	24.8	20.4	8.1	100	67	34		
S-51	40+40	CL	1.37-1.83	A-1-4(0)	15	NP	76.2	14.9	6.8	2.0	94	44	10		
S-52	42+20	CL	0.30-0.61	A-7-6(14)	46	24	28.6	8.7	20.4	42.3	100	82	65	18	
S-53	42+20	CL	0.61-1.06	A-2-4(0)	24	9	60.9	15.5	5.4	18.1	100	64	25		
S-54	42+20	CL	1.06-1.52	A-2-4(0)	18	NP	63.9	23.1	4.9	8.1	96	58	14		
S-55	42+20	CL	1.52-1.83	A-1-4(0)	19	NP	83.7	10.3	2.0	4.0	97	38	6		
SS-72	44+00	L	0.30-0.45	A-2-4(0)	25	9	59.3	15.9	5.7	19.1	100	82	26		
SS-73	44+00	L	0.76-1.21	A-1-4(0)	22	NP	80.0	16.1	0.9	3.0	98	45	4		
SS-74	44+00	L	2.28-2.73	A-1-4(0)	20	NP	70.6	24.7	1.7	3.0	96	47	5		

BM#5 - RR SPIKE IN BASE OF 300mm OAK
 136.200m LT. -BL- STA. 41+76.200 EL= 52.700



NOTE: SEE SHEET NO. 10, NO. 11 & NO. 12 FOR ALIGNMENT

09-NOV-2000 09:37
 r:\0513a\proj\0513a.pfl
 aburney