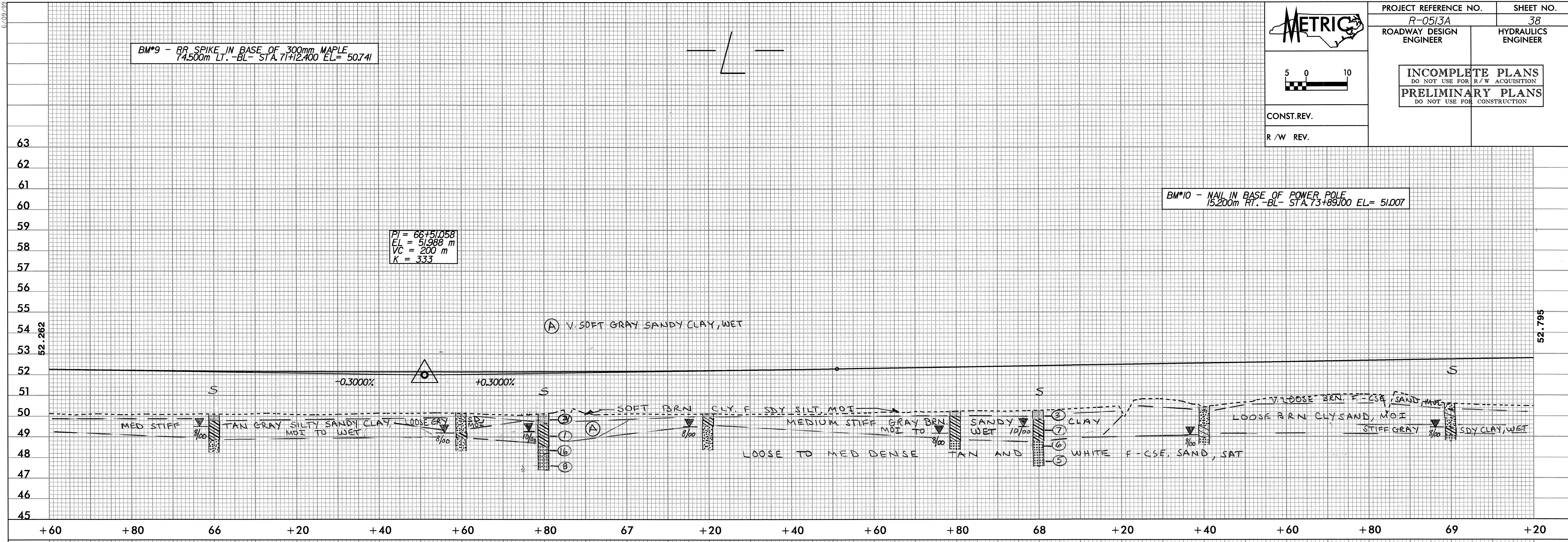


BM*9 - BR SPIKE IN BASE OF 300mm MAPLE
74.500m LT. -BL- STA. 71+12.400 EL= 50.741

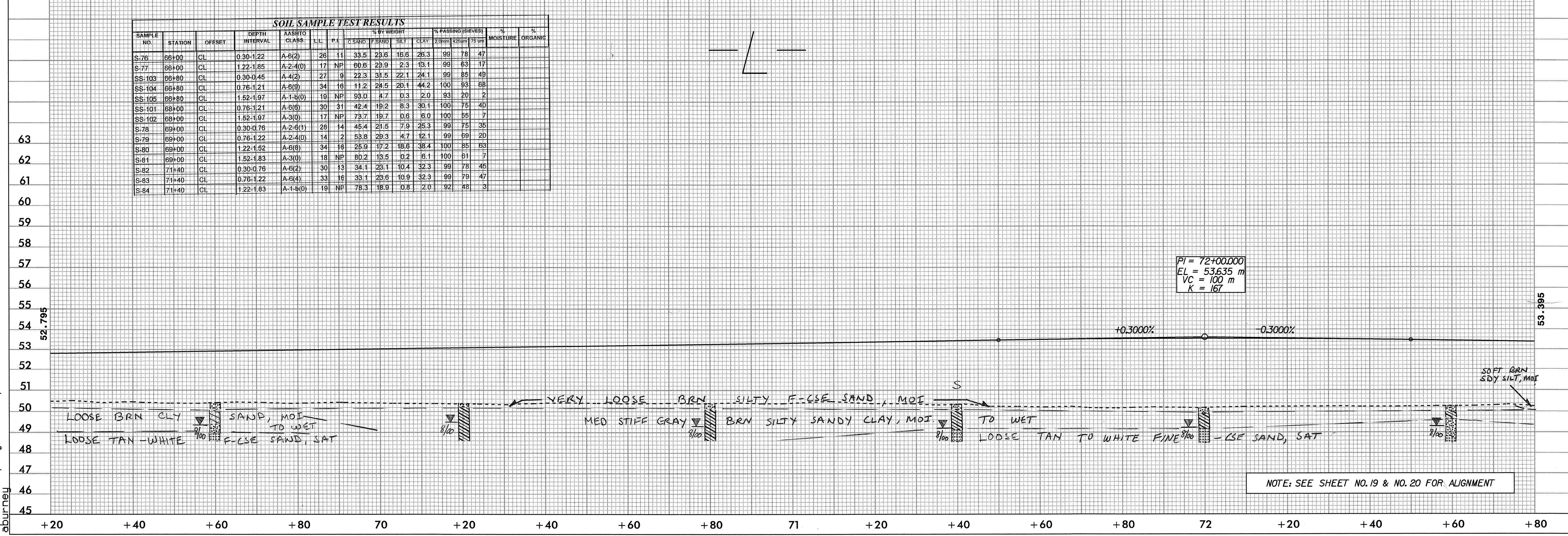
PI = 66+51.058
EL = 51.988 m
VC = 200 m
K = 333

BM*10 - NAIL IN BASE OF POWER POLE
15.200m RT. -BL- STA. 73+89.100 EL= 51.007



SOIL SAMPLE TEST RESULTS															
SAMPLE NO.	STATION	OFFSET	DEPTH INTERVAL	AASHTO CLASS.	L.L.	P.A.	WEIGHT %				NO. PASSING (SIEVES)			% MOISTURE	% ORGANIC
							C SAND	F SAND	SILT	CLAY	20mm	425um	75um		
S-76	66+00	CL	0.30-1.22	A-6(2)	26	11	33.5	23.6	16.6	26.3	99	78	47		
S-77	66+00	CL	1.22-1.85	A-2-4(0)	17	NP	60.6	23.9	2.3	13.1	99	63	17		
SS-103	66+80	CL	0.30-0.45	A-4(2)	27	9	22.3	31.5	22.1	24.1	99	88	49		
SS-104	66+80	CL	0.76-1.21	A-8(9)	34	16	11.2	24.5	20.1	44.2	100	93	68		
SS-105	66+80	CL	1.52-1.97	A-1-8(0)	19	NP	93.0	4.7	0.3	2.0	93	20	2		
SS-101	68+00	CL	0.76-1.21	A-6(6)	30	31	42.4	19.2	8.3	30.1	100	75	40		
SS-102	68+00	CL	1.52-1.97	A-3(0)	17	NP	73.7	19.7	0.6	6.0	100	55	7		
S-78	69+00	CL	0.30-0.76	A-2-6(1)	28	14	45.4	21.5	7.9	25.3	99	75	35		
S-79	69+00	CL	0.76-1.22	A-2-4(0)	14	2	53.8	29.3	4.7	12.1	99	69	20		
S-80	69+00	CL	1.22-1.52	A-6(8)	34	16	25.9	17.2	18.6	38.4	100	85	63		
S-81	69+00	CL	1.52-1.83	A-3(0)	18	NP	80.2	13.5	0.2	6.1	100	61	7		
S-82	71+40	CL	0.30-0.76	A-6(2)	30	13	34.1	23.1	10.4	32.3	99	78	45		
S-83	71+40	CL	0.76-1.22	A-8(4)	33	16	33.1	23.6	10.9	32.3	99	79	47		
S-84	71+40	CL	1.22-1.83	A-1-8(0)	19	NP	78.3	16.9	0.8	2.0	92	48	3		

PI = 72+00.000
EL = 53.635 m
VC = 100 m
K = 167



NOTE: SEE SHEET NO. 19 & NO. 20 FOR ALIGNMENT

09-NOV-2000 09:37
r:\r-0513a\proj\0513a.pfl
aburney