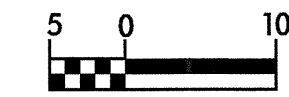


6/09/09

-RPBY2-



PROJECT REFERENCE NO. R-0513A	SHEET NO. 53
ROADWAY DESIGN ENGINEER	HYDRAULICS ENGINEER
INCOMPLETE PLANS DO NOT USE FOR R/W ACQUISITION PRELIMINARY PLANS DO NOT USE FOR CONSTRUCTION	
CONST. REV.	
R/W REV.	

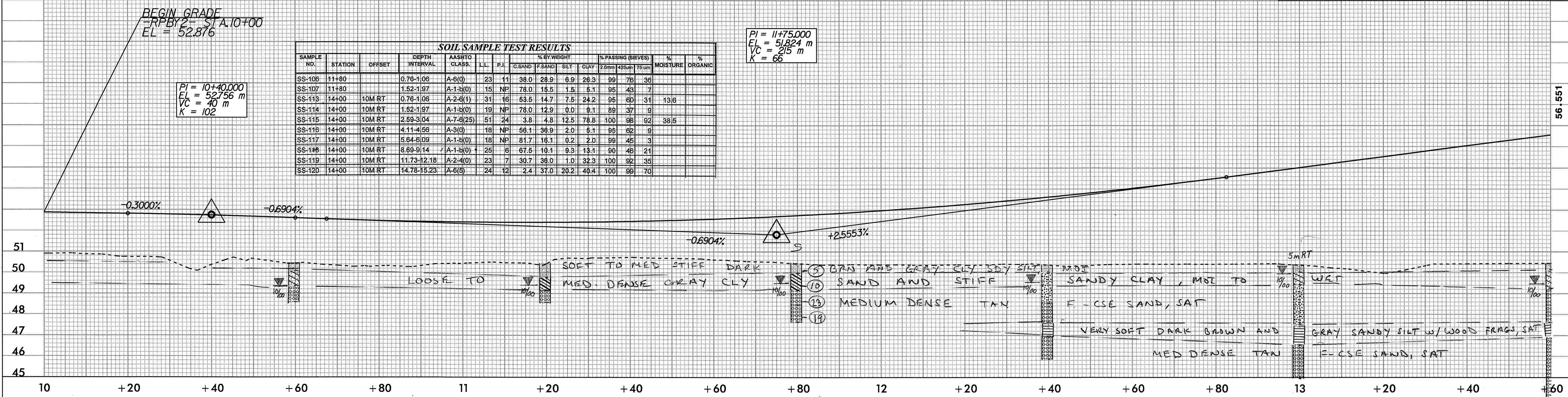


BEGIN GRADE
-RPBY2- STA. 10+00
EL = 52.876

PI = 10+40.000
EL = 52.756 m
VC = 40 m
K = 102

SAMPLE NO.	STATION	OFFSET	DEPTH INTERVAL	AASHTO CLASS.	L.L.	P.L.	% BY WEIGHT				% PASSING (SIEVES)			% MOISTURE	% ORGANIC
							C.SAND	F.SAND	SILT	CLAY	2.0mm	425um	75um		
SS-106	11+80		0.76-1.06	A-6(0)	23	11	38.0	28.9	6.9	26.3	99	76	36		
SS-107	11+80		1.52-1.97	A-1-b(0)	15	NP	78.0	15.5	1.5	5.1	95	43	7		
SS-114	14+00	10M RT	0.76-1.06	A-2-G(1)	31	16	53.5	14.7	7.5	24.2	95	60	31	13.6	
SS-114	14+00	10M RT	1.52-1.97	A-1-b(0)	19	NP	78.0	12.9	0.0	9.1	89	37	9		
SS-115	14+00	10M RT	2.59-3.04	A-7-G(25)	51	24	3.8	4.8	12.5	78.8	100	98	92	38.5	
SS-116	14+00	10M RT	4.11-4.56	A-3(0)	18	NP	58.1	38.9	2.0	5.1	95	62	9		
SS-117	14+00	10M RT	5.64-6.09	A-1-b(0)	18	NP	81.7	16.1	0.2	2.0	99	45	3		
SS-118	14+00	10M RT	8.69-9.14	A-1-b(0)	25	6	67.5	10.1	9.3	13.1	90	46	21		
SS-119	14+00	10M RT	11.73-12.18	A-2-A(0)	23	7	30.7	36.0	1.0	32.3	100	92	35		
SS-120	14+00	10M RT	14.78-15.23	A-6(5)	24	12	2.4	37.0	20.2	40.4	100	99	70		

PI = 11+75.000
EL = 51.824 m
VC = 215 m
K = 66



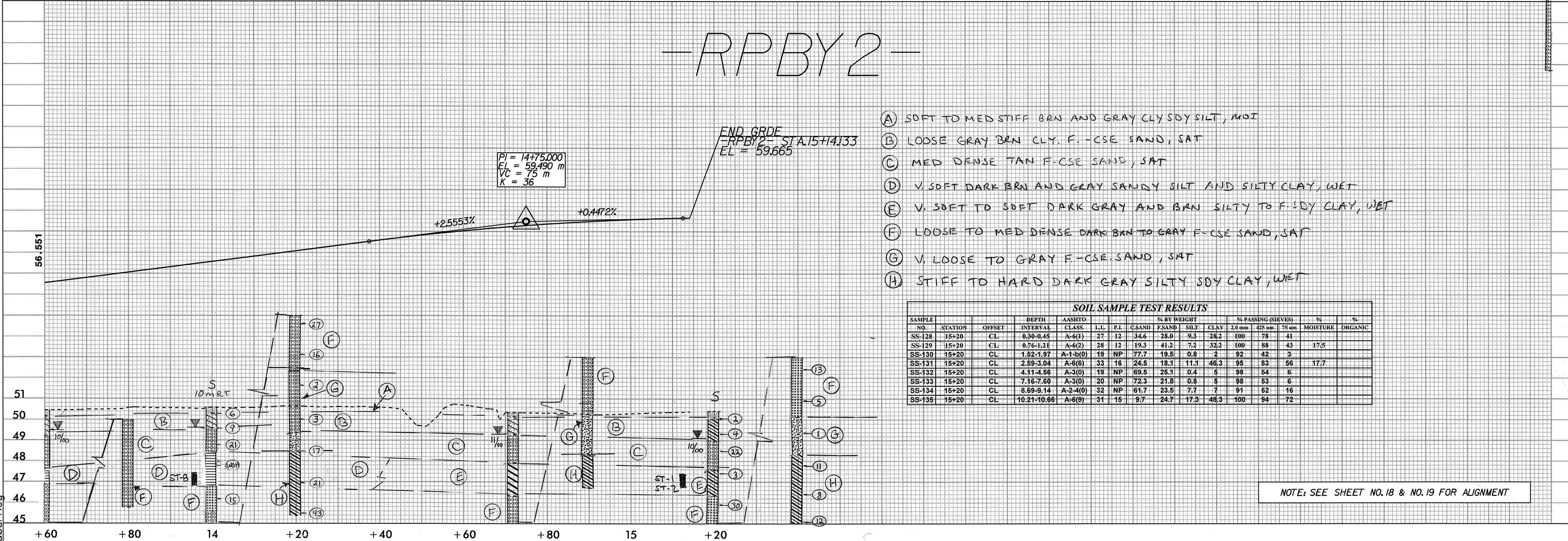
-RPBY2-

END GRADE
-RPBY2- STA. 15+14.133
EL = 59.665

PI = 14+75.000
EL = 59.490 m
VC = 75 m
K = 36

- (A) SOFT TO MED STIFF BRN AND GRAY CLY SDY SILT, MOI
- (B) LOOSE GRAY BRN CLY. F.-CSE SAND, SAT
- (C) MED DENSE TAN F.-CSE SAND, SAT
- (D) V. SOFT DARK BRN AND GRAY SANDY SILT AND SILTY CLAY, WET
- (E) V. SOFT TO SOFT DARK GRAY AND BRN SILTY TO F. SDY CLAY, WET
- (F) LOOSE TO MED DENSE DARK BRN TO GRAY F.-CSE SAND, SAT
- (G) V. LOOSE TO GRAY F.-CSE SAND, SAT
- (H) STIFF TO HARD DARK GRAY SILTY SDY CLAY, WET

SAMPLE NO.	STATION	OFFSET	DEPTH INTERVAL	AASHTO CLASS.	L.L.	P.L.	% BY WEIGHT				% PASSING (SIEVES)			% MOISTURE	% ORGANIC
							C.SAND	F.SAND	SILT	CLAY	2.0mm	425um	75um		
SS-128	15+20		0.30-0.45	A-6(1)	27	12	34.6	28.0	9.3	28.2	100	78	41		
SS-129	15+20		0.76-1.21	A-6(2)	28	12	19.3	41.2	7.2	32.2	100	88	43	17.5	
SS-130	15+20		1.52-1.97	A-1-b(0)	19	NP	77.7	19.5	0.8	2	92	42	3		
SS-131	15+20		2.59-3.04	A-6(6)	33	16	24.5	18.1	11.1	46.3	95	83	56	17.7	
SS-132	15+20		4.11-4.56	A-3(0)	19	NP	69.5	25.1	0.4	5	98	54	6		
SS-133	15+20		7.16-7.60	A-3(0)	20	NP	72.3	21.8	0.8	5	98	55	6		
SS-134	15+20		8.69-9.14	A-2-A(0)	32	NP	61.7	23.5	7.7	7	91	62	16		
SS-135	15+20		10.21-10.66	A-6(9)	31	15	9.7	24.7	17.3	48.3	100	94	72		



NOTE: SEE SHEET NO. 18 & NO. 19 FOR ALIGNMENT

09-NOV-2000 09:36
r:\r0513a\proj\r0513a.pf1
aburney