

5.09.28

**METRIC**

PROJECT REFERENCE NO. R-0513A SHEET NO. 58

ROADWAY DESIGN ENGINEER HYDRAULICS ENGINEER

INCOMPLETE PLANS  
DO NOT USE FOR R/W ACQUISITION

PRELIMINARY PLANS  
DO NOT USE FOR CONSTRUCTION

CONST. REV.

R/W REV.

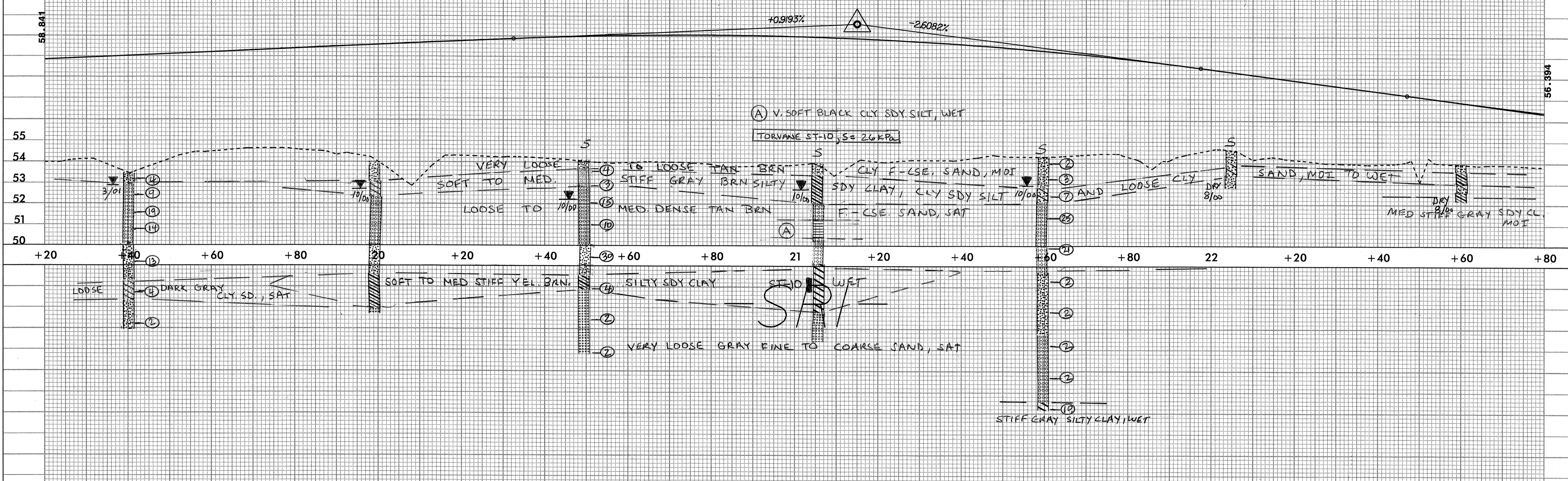
5 0 10

**SOIL SAMPLE TEST RESULTS**

SAMPLE NO.	STATION	OFFSET	DEPTH INTERVAL	AASHTO CLASS.	L.L.	P.I.	% BY WEIGHT				% PASSING (SIEVES)			%	%
							C.SAND	F.SAND	SILT	CLAY	2.0mm	425um	75um		
SS-37	20+50	CL	0.76-1.21	A-4(0)	24	10	51.5	14.1	14.1	20.2	100	72	37		
SS-38	20+50	CL	1.52-1.97	A-1-b(0)	21	NP	76.4	19.7	0.9	3.0	94	43	4		
SS-39	20+50	CL	2.62-3.07	A-2-4(0)	17	NP	43.6	40.4	3.8	12.1	100	85	17		
SS-40	20+50	CL	5.67-6.12	A-6(10)	40	23	22.6	26.1	17	34.3	100	88	56		
SS-41	20+50	CL	7.19-7.64	A-3(0)	13	NP	53	39.9	1	6.1	98	65	7		
S-24	21+06	CL	0.30-0.46	A-2-4(0)	21	8	48.3	26.1	8.6	18.2	98	77	28		
S-25	21+06	CL	0.48-0.91	A-6(6)	37	22	43.6	11.3	14.7	30.3	100	68	47		
S-26	21+06	CL	0.91-1.37	A-6(6)	38	18	46.7	6.7	16.4	32.3	99	61	48		
S-27	21+06	CL	1.37-1.83	A-6(1)	28	13	52.5	13.5	13.7	20.2	100	57	38		
S-127	21+06	CL	1.83-2.74	A-2-4(0)	21	NP	16.2	61.4	10.3	12.1	98	88	30		
S-128	21+06	CL	2.74-3.51	A-5(2)	74	NP	14.9	47.9	27.1	10.1	98	89	48		
S-129	21+06	CL	4.88-7.29	A-7-6(13)	42	24	14.1	24.8	18.6	42.4	99	89	66		
SS-32	21+06	CL	0.76-1.21	A-2-4(0)	24	10	55.9	19.8	5.1	19.1	98	59	26		
SS-33	21+06	CL	1.52-1.97	A-2-6(1)	30	14	40.1	26.2	5.5	28.2	99	77	36		
SS-34	21+06	CL	2.62-3.07	A-1-b(0)	18	NP	81.6	10.7	0.8	7	76	23	7		
SS-35	21+06	CL	5.62-6.12	A-2-4(0)	24	NP	27.8	60	2.1	10.1	98	82	14		
SS-36	21+06	CL	8.72-9.17	A-1-b(0)	21	NP	67.5	24.7	0.8	7	95	47	8		
S-8	22+05	CL	0.61-1.22	A-2-6(1)	30	15	51.1	19.8	6.9	22.2	97	61	31		
S-9	22+05	CL	1.22-1.83	A-2-4(0)	24	9	54	23.3	4.4	18.2	96	60	24		

-SRI-

PI = 21.15000  
 EL = 60.634 m  
 VC = 165 m  
 K = 47

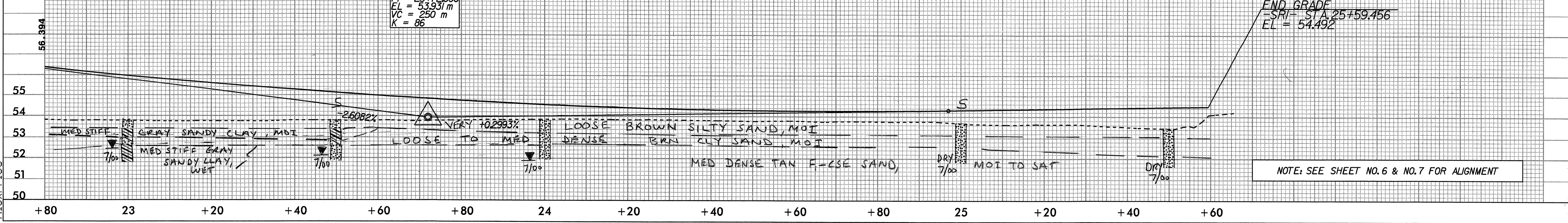


**SOIL SAMPLE TEST RESULTS**

SAMPLE NO.	STATION	OFFSET	DEPTH INTERVAL	AASHTO CLASS.	L.L.	P.I.	% BY WEIGHT				% PASSING (SIEVES)			%	%
							C.SAND	F.SAND	SILT	CLAY	2.0mm	425um	75um		
S-10	23+50	CL	0.30-0.61	A-6(4)	31	16	34.0	17.2	17.6	30.3	99	74	61		
S-11	23+50	CL	0.61-1.06	A-2-6(0)	26	13	55.1	18.8	7.0	19.2	98	61	28		
S-12	23+50	CL	1.06-1.85	A-2-4(0)	18	NP	87.6	22.7	3.8	6.1	97	53	11		
S-13	25+00	CL	0.61-1.06	A-2-4(0)	22	8	45.7	29	9.2	16.2	99	69	29		
S-14	25+00	CL	1.06-1.83	A-2-4(0)	17	NP	20.1	61.7	12.1	6.1	98	87	27		

PI = 23.72000  
 EL = 53.931 m  
 VC = 250 m  
 K = 86

END GRADE  
 -SRI- STA. 25+59.456  
 EL = 54.492



NOTE: SEE SHEET NO. 6 & NO. 7 FOR ALIGNMENT

18-DEC-2000 14:57  
 R:\PROJECTS\0513A\Proj\0513a.pfl  
 Alex Price