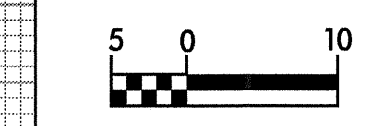


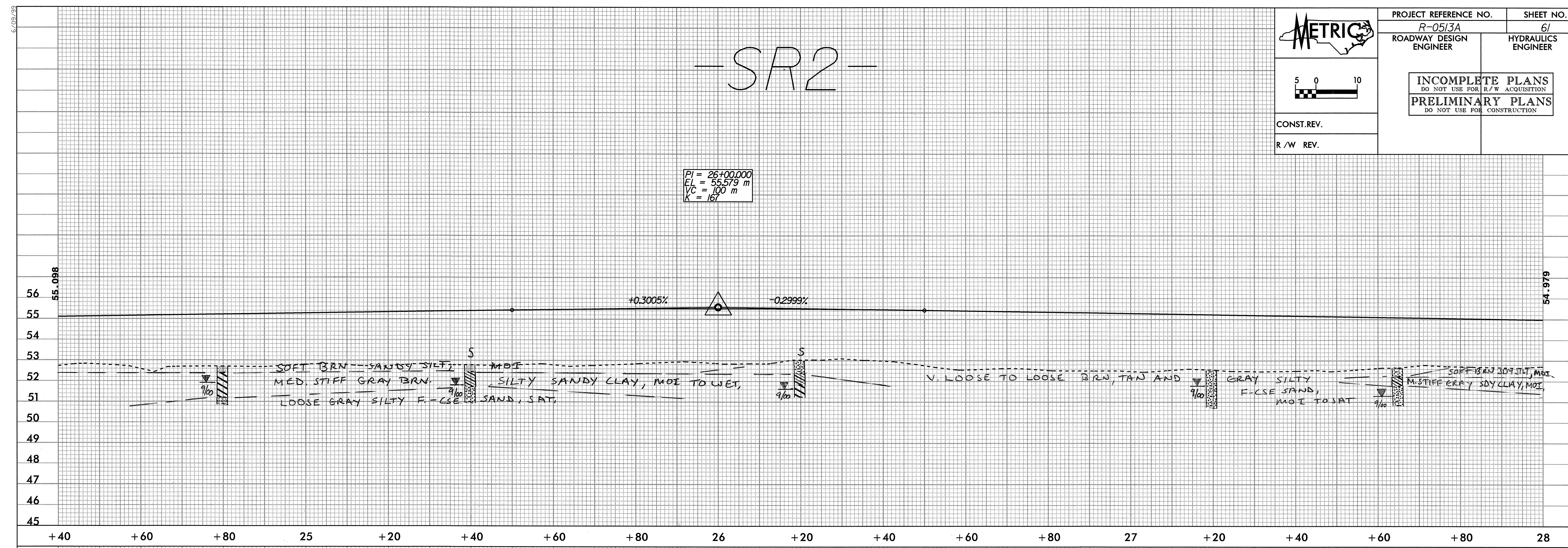


PROJECT REFERENCE NO. R-0513A	SHEET NO. 61
ROADWAY DESIGN ENGINEER	HYDRAULICS ENGINEER
INCOMPLETE PLANS DO NOT USE FOR R/W ACQUISITION PRELIMINARY PLANS DO NOT USE FOR CONSTRUCTION	
CONST. REV.	
R/W REV.	



-SR2-

$PI = 26+00.000$
 $EL = 55.579 \text{ m}$
 $VC = 100 \text{ m}$
 $K = 167$

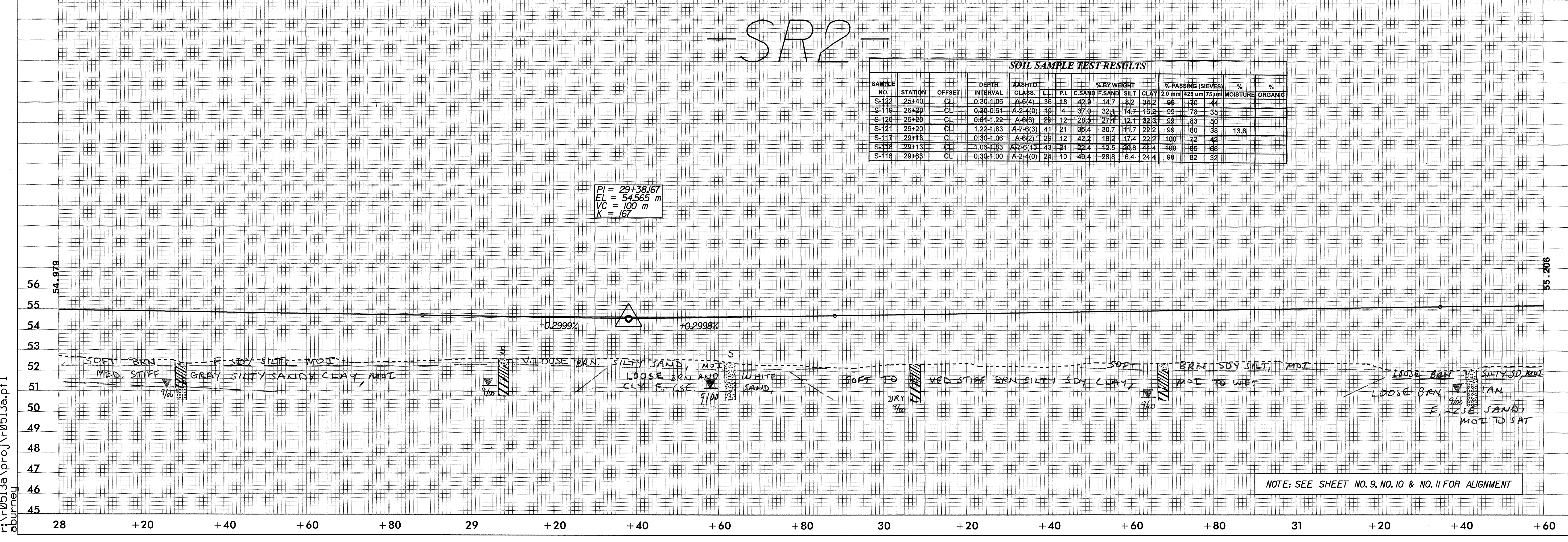


-SR2-

SOIL SAMPLE TEST RESULTS

SAMPLE NO.	STATION	OFFSET	DEPTH INTERVAL	AASHTO CLASS.	% BY WEIGHT				% PASSING (SIEVES)			% MOISTURE	% ORGANIC
					LL	PI	C.SAND	F.SAND	SILT	CLAY	2.0 mm		
S-122	25+40	CL	0.30-1.06	A-6(4)	36	18	42.9	14.7	8.2	34.2	99	70	44
S-119	26+20	CL	0.30-0.61	A-2-4(0)	19	4	37.0	32.1	14.7	16.2	99	78	35
S-120	26+20	CL	0.61-1.22	A-6(3)	29	12	28.5	27.1	12.1	32.3	99	83	50
S-121	26+20	CL	1.22-1.83	A-7-8(3)	41	21	35.4	30.7	11.7	22.2	99	80	38
S-117	29+13	CL	0.30-1.06	A-6(2)	29	12	42.2	18.2	17.4	22.2	100	72	42
S-118	29+13	CL	1.06-1.83	A-7-8(3)	43	21	22.4	12.6	20.8	44.4	100	85	68
S-116	29+83	CL	0.30-1.00	A-2-4(0)	24	10	40.4	28.8	6.4	24.4	98	82	32

$PI = 29+38.167$
 $EL = 54.565 \text{ m}$
 $VC = 100 \text{ m}$
 $K = 167$



NOTE: SEE SHEET NO. 9, NO. 10 & NO. 11 FOR ALIGNMENT

09-NOV-2000 09:36
 r:\r0513a\proj\0513a.pfl
 aburney