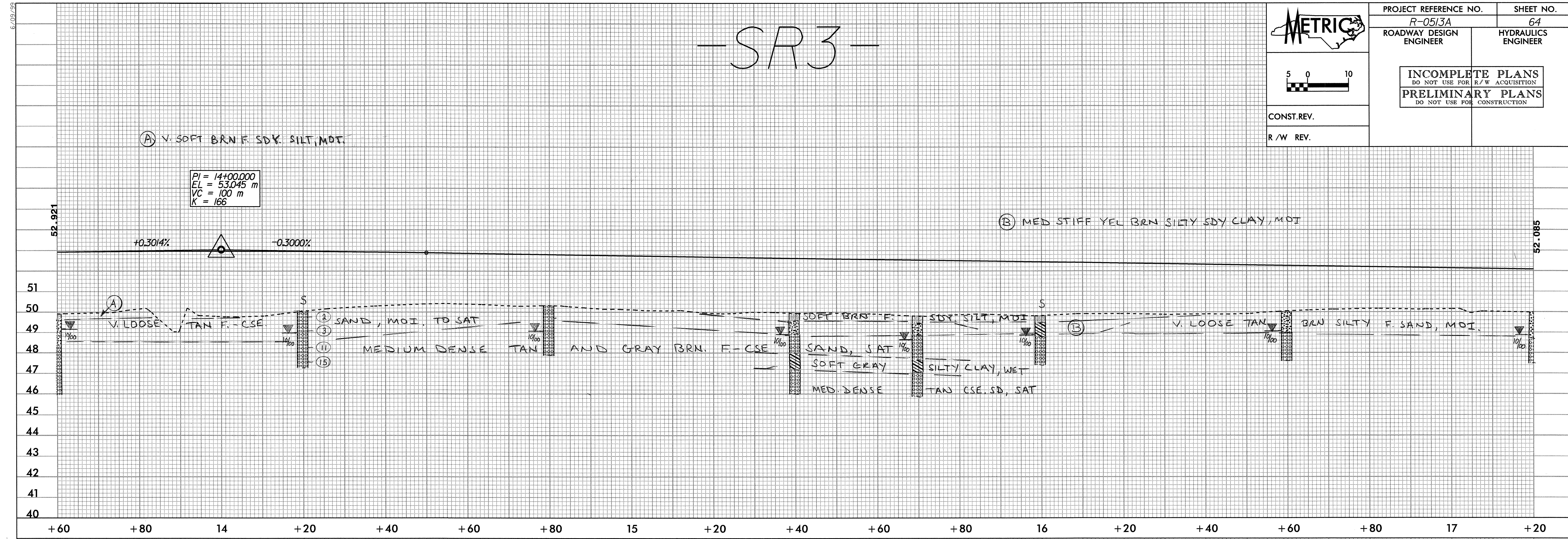


# -SR3-

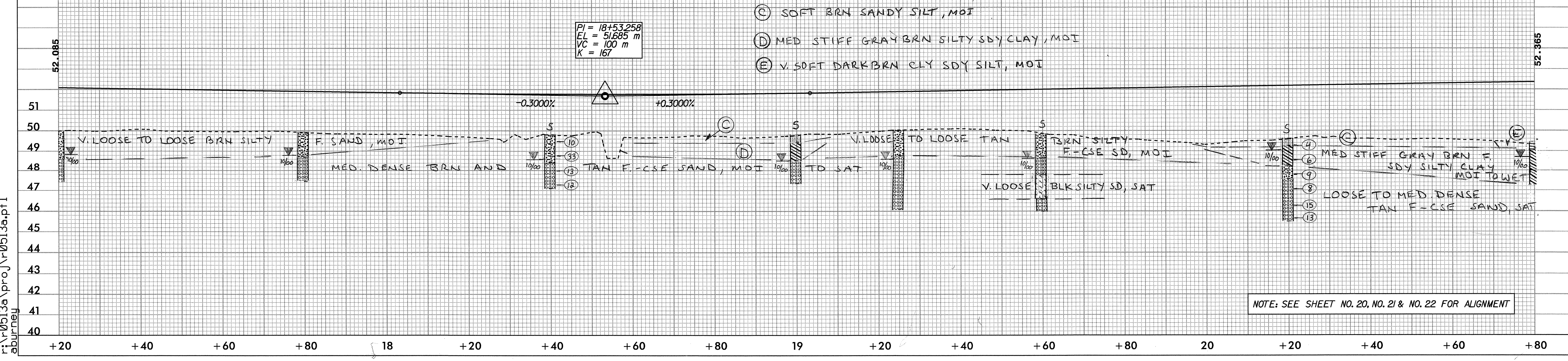
 5 0 10 CONST. REV. R/W REV.	PROJECT REFERENCE NO. R-0513A	SHEET NO. 64
	ROADWAY DESIGN ENGINEER	HYDRAULICS ENGINEER
<b>INCOMPLETE PLANS</b> DO NOT USE FOR R/W ACQUISITION <b>PRELIMINARY PLANS</b> DO NOT USE FOR CONSTRUCTION		



**SOIL SAMPLE TEST RESULTS**

SAMPLE NO.	STATION	OFFSET	DEPTH INTERVAL	AASHTO CLASS.	L.L.	P.I.	% BY WEIGHT			% PASSING (SIEVES)			MOISTURE %	ORGANIC %
							C. SAND	F. SAND	SILT CLAY	2.0 mm	425 um	75 um		
SS-87	14+20	CL	0.30-0.45	A-1-b(0)	17	3	69.8	14.0	6.2	10.0	98	49	17	
SS-88	14+20	CL	0.76-1.21	A-1-b(0)	23	NP	67.1	14.2	7.7	11.0	97	50	19	
SS-89	14+20	CL	1.52-1.97	A-1-b(0)	16	NP	80.7	14.5	0.8	4	98	48	5	
S-139	16+00	CL	0.30-1.06	A-6(3)	30	15	37.9	20.4	18.7	23.1	99	75	45	
S-140	16+00	CL	1.06-2.44	A-1-b(0)	19	NP	84.7	12.8	1.5	1	96	33	3	
SS-90	18+40	CL	0.76-1.21	A-2-4(0)	21	NP	75.4	11.5	4	9	100	58	14	
SS-91	18+40	CL	1.52-1.97	A-1-b(0)	16	NP	78.9	18.1	1	2	98	48	3	
S-141	19+00	CL	0.30-1.22	A-6(2)	28	12	45.7	10.3	17.9	26.1	100	70	45	
S-142	19+60	CL	2.13-3.05	A-2-5(0)	93	NP	55.4	16.5	20.1	8	89	53	26	
SS-95	20+20	CL	0.76-1.25	A-8(13)	36	20	7.6	22.3	27.9	42.2	100	95	73	
SS-96	20+20	CL	1.52-1.97	A-2-4(0)	19	NP	40.1	48.7	5.2	6	100	89	13	
SS-97	20+20	CL	2.28-2.73	A-1-b(0)	15	NP	89.4	8	0.6	2	97	32	4	

# -SR3-



NOTE: SEE SHEET NO. 20, NO. 21 & NO. 22 FOR ALIGNMENT

09-NOV-2000 09:36  
 R:\0513a\proj\0513a.pfl  
 aburney