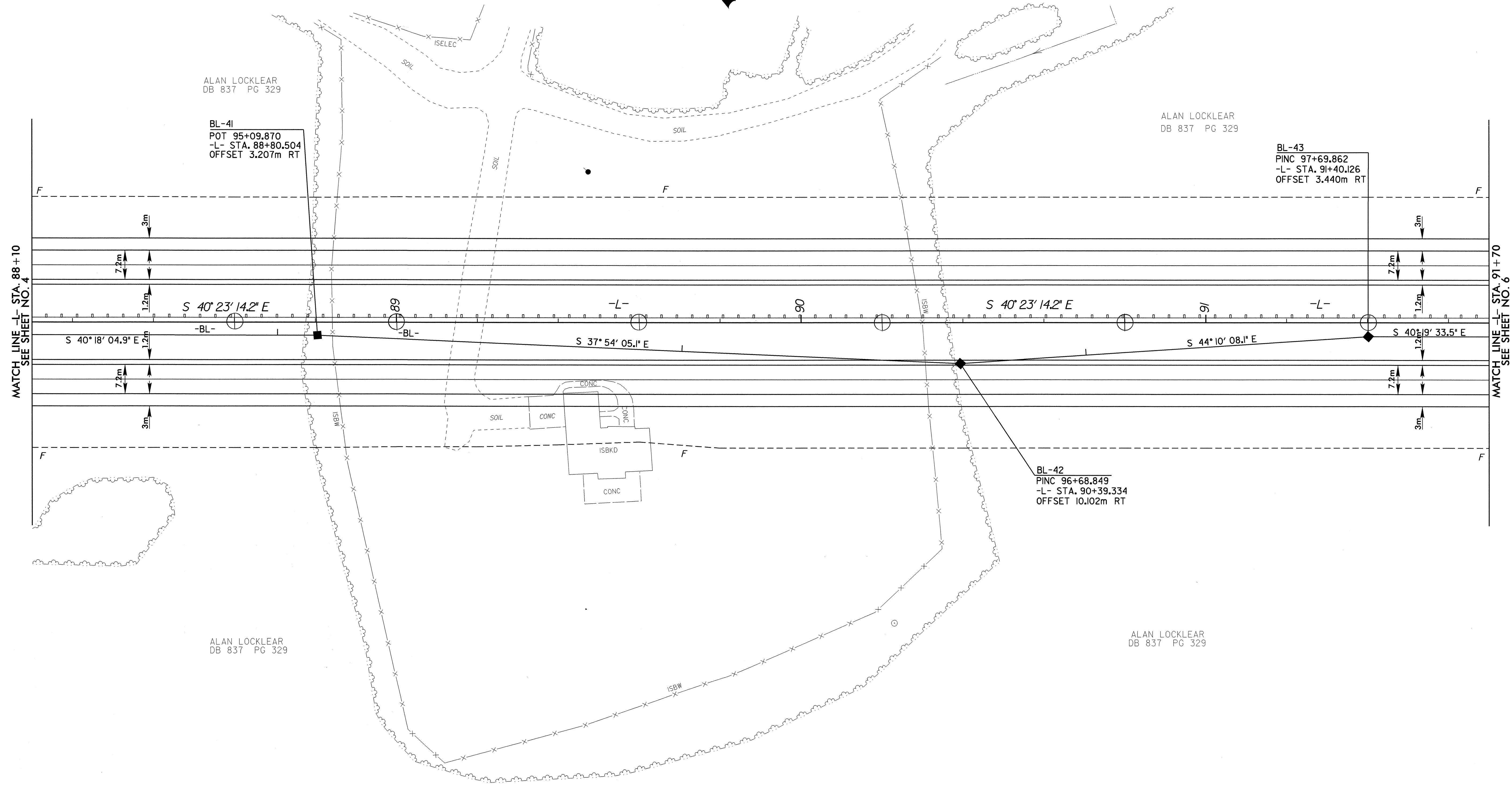
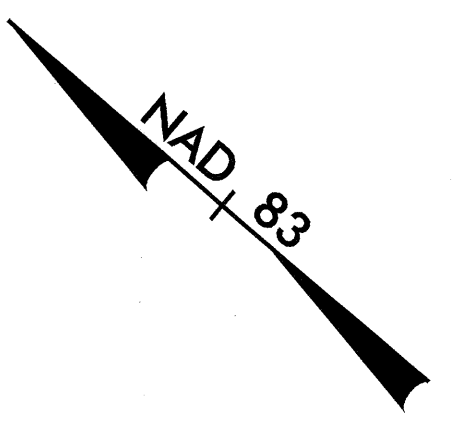
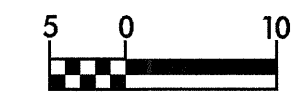


8/17/98



PROJECT REFERENCE NO. <i>R-0513BA</i>	SHEET NO. 5
R/W SHEET NO.	
ROADWAY DESIGN ENGINEER	HYDRAULICS ENGINEER
<b>PRELIMINARY PLANS</b> DO NOT USE FOR CONSTRUCTION	
<b>INCOMPLETE PLANS</b> DO NOT USE FOR R/W ACQUISITION	
CONST.REV.	
R/W REV.	



ALAN LOCKLEAR  
DB 837 PG 329

BL-41  
 POT 95+09.870  
 -L- STA. 88+80.504  
 OFFSET 3.207m RT

ALAN LOCKLEAR  
DB 837 PG 329

BL-43  
 PINC 97+69.862  
 -L- STA. 91+40.126  
 OFFSET 3.440m RT

BL-42  
 PINC 96+68.849  
 -L- STA. 90+39.334  
 OFFSET 10.102m RT

ALAN LOCKLEAR  
DB 837 PG 329

ALAN LOCKLEAR  
DB 837 PG 329

MATCH LINE -L- STA. 88+10  
SEE SHEET NO. 4

MATCH LINE -L- STA. 91+70  
SEE SHEET NO. 6

28-DEC-2000 13:33  
A:\19613ba\pro\19613ba.dwg

NOTE: FOR PROFILE OF -L-, SEE SHEET NO. 27