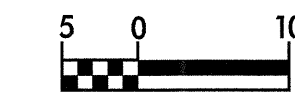


8/17/23



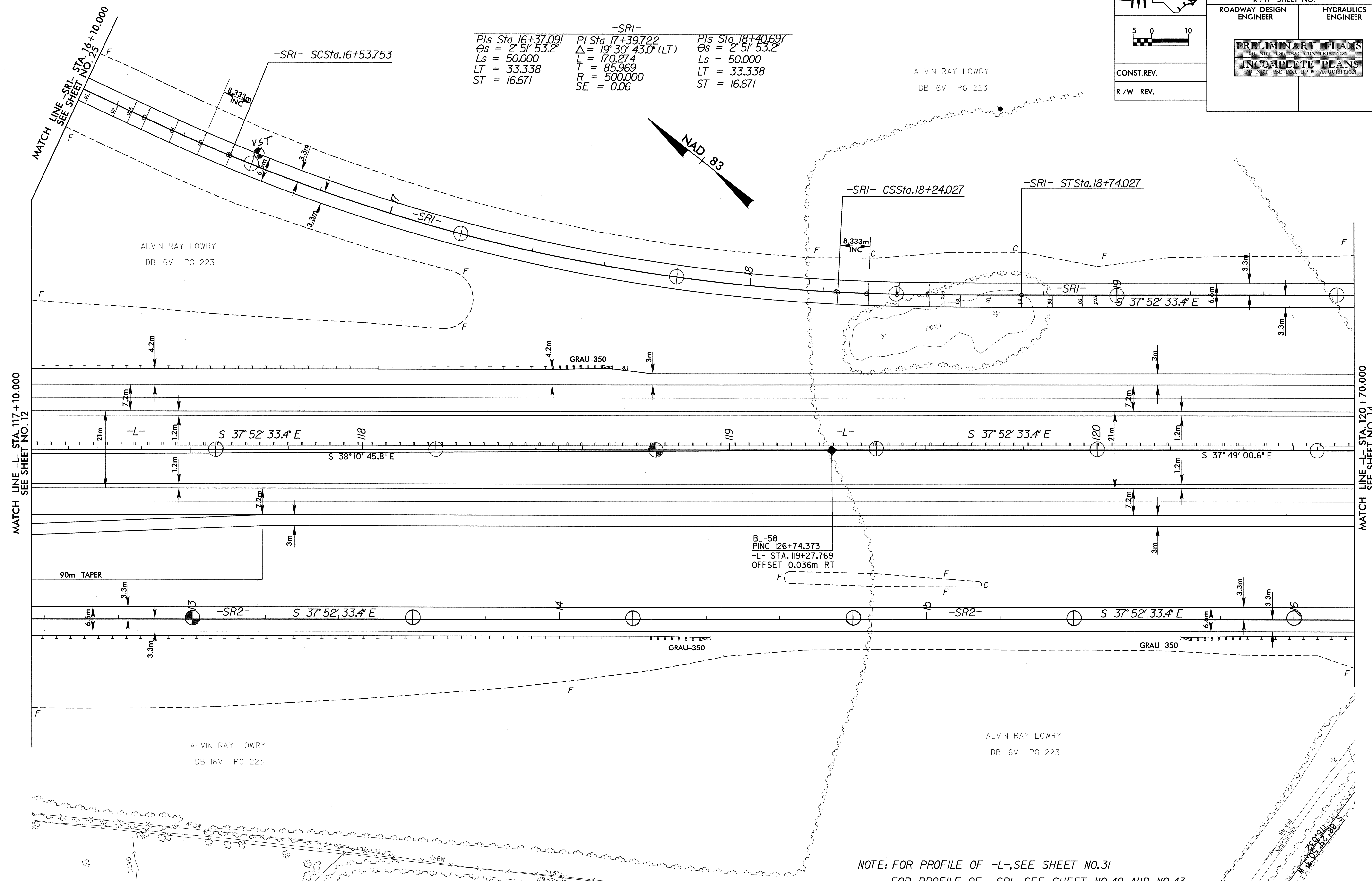
PROJECT REFERENCE NO.	SHEET NO.
R-0513BA	13
R/W SHEET NO.	
ROADWAY DESIGN ENGINEER	HYDRAULICS ENGINEER
<b>PRELIMINARY PLANS</b> DO NOT USE FOR CONSTRUCTION	
<b>INCOMPLETE PLANS</b> DO NOT USE FOR R/W ACQUISITION	
CONST. REV.	
R/W REV.	



-SRI-

Pls Sta. 16+37.091	PI Sta. 17+39.722	Pls Sta. 18+40.697
$\Theta_s = 2^\circ 51' 53.2''$	$\Delta = 19^\circ 30' 43.0'' (LT)$	$\Theta_s = 2^\circ 51' 53.2''$
$L_s = 50.000$	$L = 170.274$	$L_s = 50.000$
$LT = 33.338$	$T = 85.969$	$LT = 33.338$
$ST = 16.671$	$R = 500.000$	$ST = 16.671$
	$SE = 0.06$	

ALVIN RAY LOWRY  
DB I6V PG 223



ALVIN RAY LOWRY  
DB I6V PG 223

BL-58  
PINC 126+74.373  
-L- STA. 119+27.769  
OFFSET 0.036m RT

ALVIN RAY LOWRY  
DB I6V PG 223

ALVIN RAY LOWRY  
DB I6V PG 223

NOTE: FOR PROFILE OF -L-, SEE SHEET NO. 31  
 FOR PROFILE OF -SRI-, SEE SHEET NO. 42 AND NO. 43  
 FOR PROFILE OF -SR2-, SEE SHEET NO. 45

24-DEC-2000 14:32  
R:\0513BA\Drawings\0513baas13.pnh  
Alburney