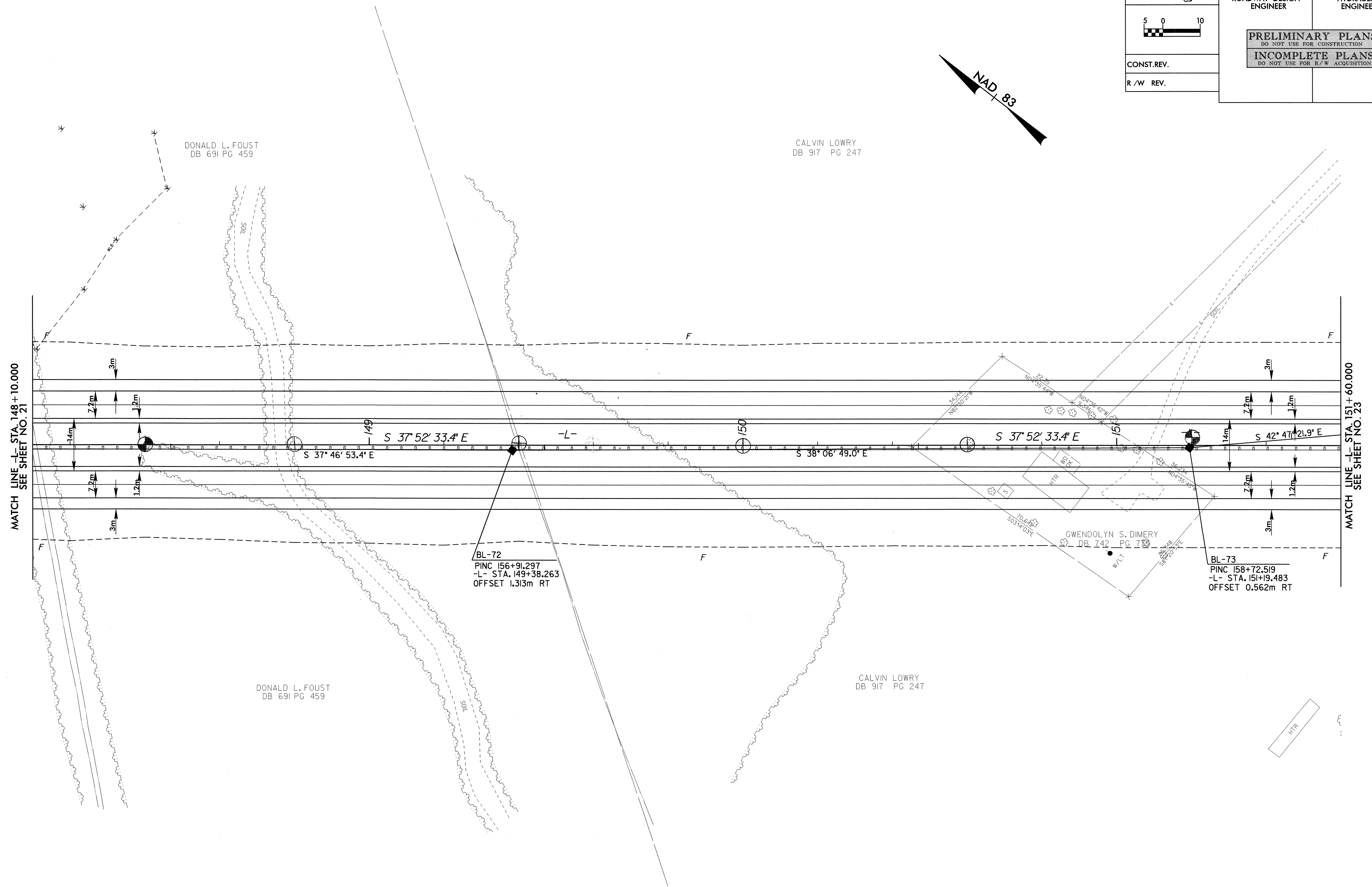
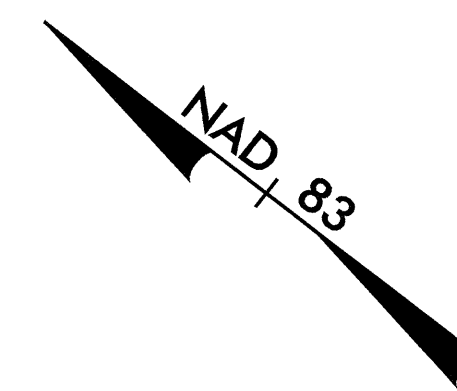
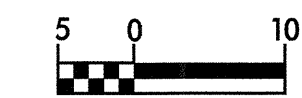


8/17/95



PROJECT REFERENCE NO. R-0513BA		SHEET NO. 22
R/W SHEET NO.		
ROADWAY DESIGN ENGINEER	HYDRAULICS ENGINEER	
<b>PRELIMINARY PLANS</b> DO NOT USE FOR CONSTRUCTION		
<b>INCOMPLETE PLANS</b> DO NOT USE FOR R/W ACQUISITION		
CONST. REV.		
R/W REV.		



DONALD L. FOUST  
DB 691 PG 459

CALVIN LOWRY  
DB 917 PG 247

DONALD L. FOUST  
DB 691 PG 459

CALVIN LOWRY  
DB 917 PG 247

GWENDOLYN S. DIMERY  
DB 742 PG 755

MATCH LINE -L- STA. 148+10.000  
SEE SHEET NO. 21

MATCH LINE -L- STA. 151+60.000  
SEE SHEET NO. 23

NOTE: FOR PROFILE OF -L-, SEE SHEET NO. 35 & NO. 36

28-DEC-2000 13:32  
C:\MSOFT\388\Pro\1\0513BAS22.PSH