
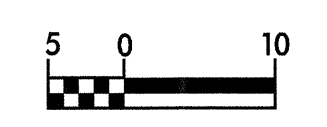


8/17/99

	PROJECT REFERENCE NO.	SHEET NO.
	R-0513BA	23
ROADWAY DESIGN ENGINEER		HYDRAULICS ENGINEER
PRELIMINARY PLANS DO NOT USE FOR CONSTRUCTION		INCOMPLETE PLANS DO NOT USE FOR R/W ACQUISITION
CONST. REV.		
R/W REV.		



CALVIN LOWRY
DB 917 PG 247

CALVIN LOWRY
DB 917 PG 247

JEFFERY DEAN JONES
DB 1077 PG 469
DB 695 PG 453

BY3-6
POT 5+00.000
-L- STA. 153+69.926
OFFSET 113.492m RT

CALVIN LOWRY
DB 917 PG 247

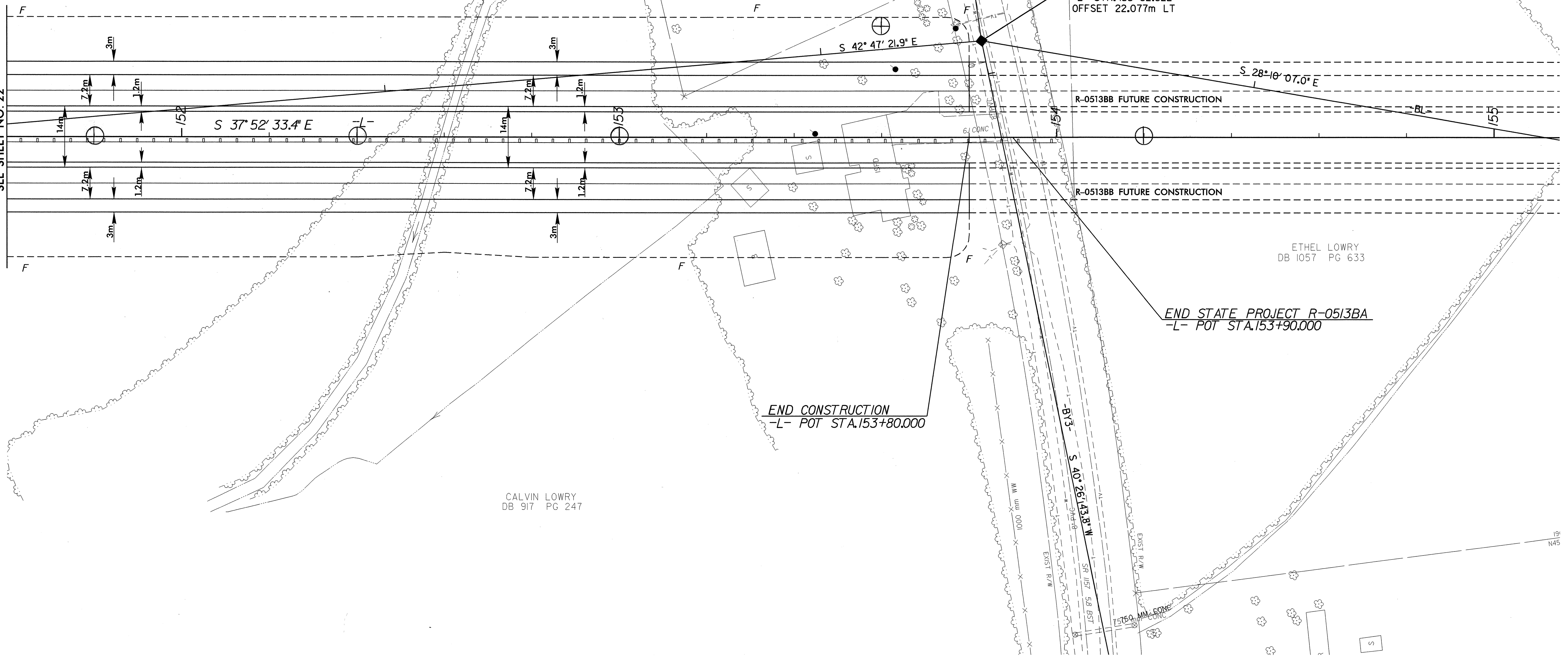
JERRY LOWRY
DB 714 PG 604

ETHEL LOWRY
DB 1057 PG 633

BL-74 PINC 161+36.830
-BY3- PINC 5+92.320
-L- STA. 153+82.822
OFFSET 22.077m LT

ETHEL LOWRY
DB 1057 PG 633

MATCH LINE -L- STA. 151+60.000
SEE SHEET NO. 22



END CONSTRUCTION
-L- POT STA. 153+80.000

END STATE PROJECT R-0513BA
-L- POT STA. 153+90.000

CALVIN LOWRY
DB 917 PG 247

28-DEC-2000 15:32
A:\m\1353\proj\1-0513ba\23.pch

NOTE: FOR PROFILE OF -L-, SEE SHEET NO. 36