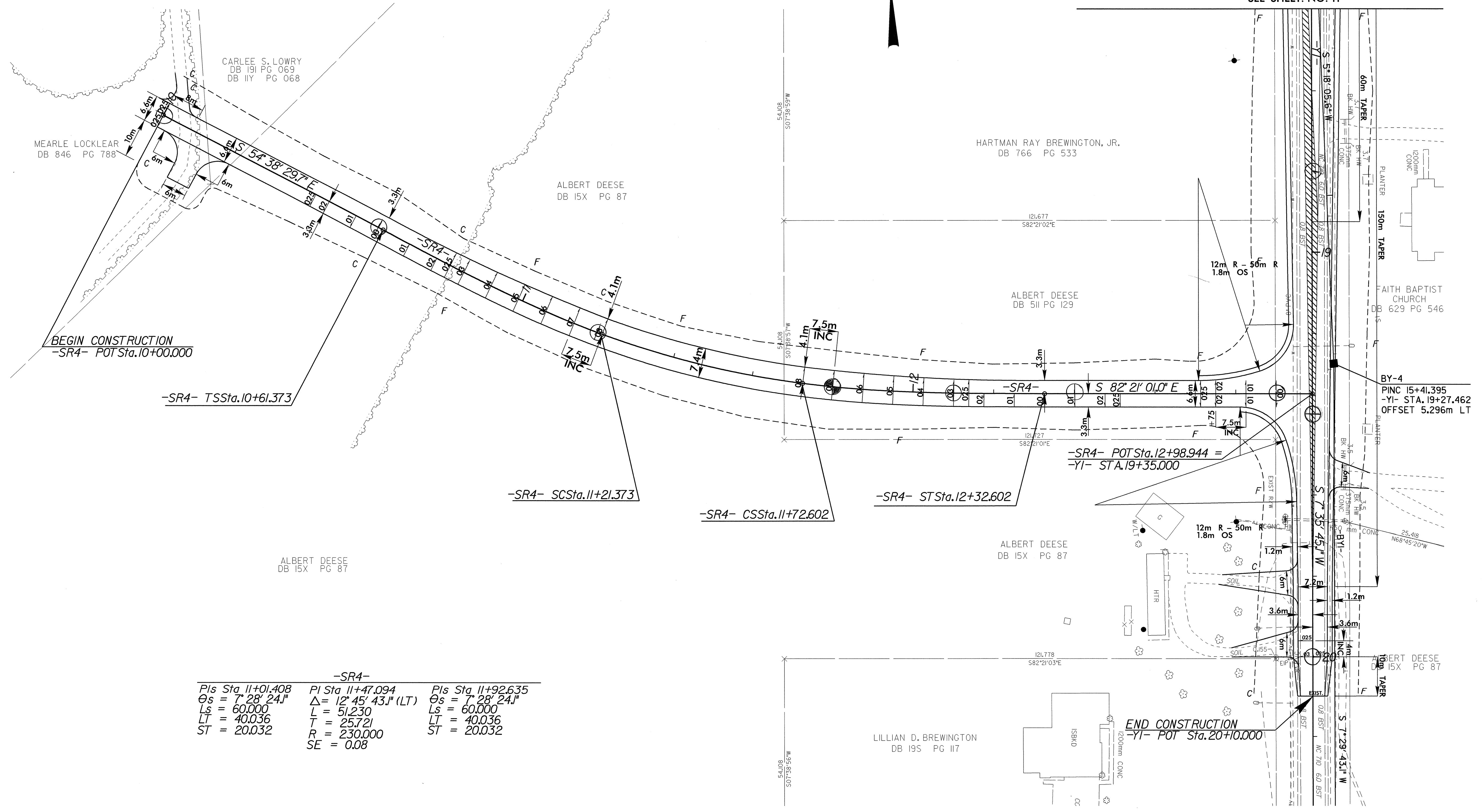


PROJECT REFERENCE NO. <i>R-0513BA</i>		SHEET NO. 26
R/W SHEET NO.		
ROADWAY DESIGN ENGINEER	HYDRAULICS ENGINEER	
<b>PRELIMINARY PLANS</b> DO NOT USE FOR CONSTRUCTION <b>INCOMPLETE PLANS</b> DO NOT USE FOR R/W ACQUISITION		
CONST. REV.		
R/W REV.		



8/7/29  
 20 DEC 2000 13:32  
 C:\p0513ba\p0513ba26.dwg  
 Albert



-SR4-		
PIs Sta. 11+01.408	PI Sta. 11+47.094	PIs Sta. 11+92.635
$\theta_s = 7^\circ 28' 24.1''$	$\Delta = 12^\circ 45' 43.1''$ (LT)	$\theta_s = 7^\circ 28' 24.1''$
$L_s = 60.000$	$L = 51.230$	$L_s = 60.000$
$LT = 40.036$	$T = 25.721$	$LT = 40.036$
$ST = 20.032$	$R = 230.000$	$ST = 20.032$
	$SE = 0.08$	

NOTE: FOR PROFILE OF -SR4-, SEE SHEET NO. 47  
 FOR PROFILE OF -YI-, SEE SHEET NO. 37 & NO. 38