

6/09/99

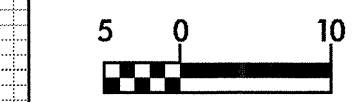
VANE

LINE	STATION	DEPTH	READING
L	94+40	0.3	174
L	94+40	0.45	148
L	94+40	0.6	142
L	94+40	0.76	103
L	94+40	0.96	115



PROJECT REFERENCE NO. R-0513BA
ROADWAY DESIGN ENGINEER

SHEET NO. 28
HYDRAULICS ENGINEER



CONST. REV.
R / W REV.

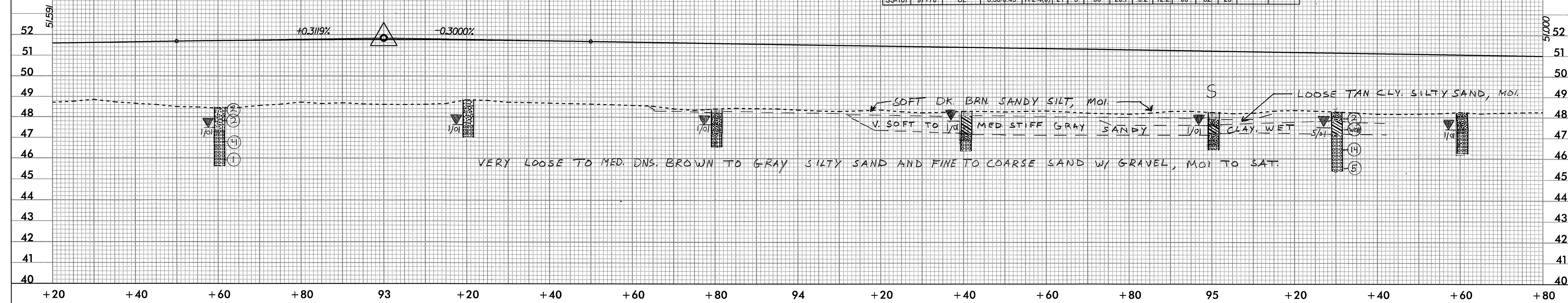
PRELIMINARY PLANS
DO NOT USE FOR CONSTRUCTION
INCOMPLETE PLANS
DO NOT USE FOR R/W ACQUISITION

BM#1 RR SPIKE IN BASE OF 200MM PIN OAK
-L- STA.92+74.805 87.327M RT
N 101471.945 E 585788.478 EL = 49.282

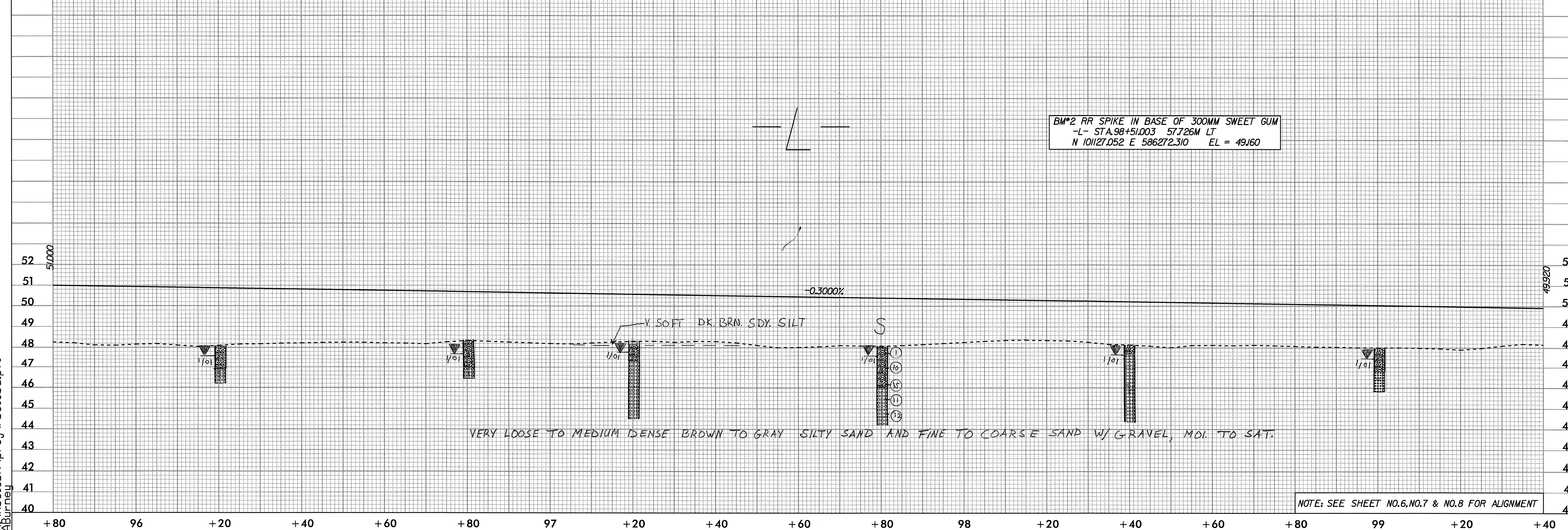
PI = 93+00.000
EL = 51.840 m
VC = 100 m
K = 163

SOIL SAMPLE TEST RESULTS

SAMPLE NO.	STATION	OFFSET	DEPTH	AASHTO CLASS.	LL	PL	% BY WEIGHT				% PASSING (SIEVES)			MOISTURE %	ORGANIC %
							C SAND	F SAND	SILT	CLAY	2.0 mm	425 um	75 um		
S-7	95+00	CL	0.30-0.61	A-2-4(0)	24	10	46.3	21.9	11.7	20.1	100	69	35		
S-8	95+00	CL	0.61-0.91	A-6(0)	31	15	40.2	18.1	11.5	30.2	100	74	44		
S-9	95+00	CL	0.91-1.52	A-2-4(0)	22	7	55.8	20	8	16.1	99	61	26		
S-10	95+00	CL	1.52-1.83	A-1-b(0)	17	NP	78.8	11.2	2	8.0	97	37	10		
SS-107	97+70	CL	0.30-0.45	A-2-4(0)	21	6	58	20.7	9.2	12.2	98	62	23		



BM#2 RR SPIKE IN BASE OF 300MM SWEET GUM
-L- STA.98+51.003 57.726M LT
N 101127.052 E 586272.310 EL = 49.160



NOTE: SEE SHEET NO.6, NO.7 & NO.8 FOR ALIGNMENT

28-DEC-2000 14:56
R:\R0513BA\proj\r0513ba.pf1
Aburney