

5/09/09

SOIL SAMPLE TEST RESULTS															
SAMPLE NO.	STATION	OFFSET	DEPTH	AASHTO	LL	PL	% BY WEIGHT			% PASSING (SIEVES)			MOISTURE	ORGANIC	
							G.SAND	F.SAND	SILT	CLAY	2.0mm	425um	75um	%	%
SS-97	106+80	CL	0.76-1.21	A-4(0)	20	5	20.3	44.7	18.8	16.1	100	94	40		
SS-98	106+80	CL	1.52-1.97	A-2-4(0)	21	NP	49.4	38.9	7.7	4.0	98	75	14		
SS-99	106+80	CL	2.29-2.74	A-1-b(0)	20	NP	90.0	9	0	1.0	90	21	1		
SS-100	109+20	CL	0.76-1.21	A-1-b(0)	21	NP	80.8	17.6	0.6	1.0	98	45	2		
SS-101	109+20	CL	2.29-2.74	A-4(3)	22	9	20.8	15.8	53.3	10.1	99	89	64		
SS-102	109+20	CL	3.05-3.50	A-3(0)	22	NP	71.3	27.8	0.9	0	100	65	1		
S-24	110+40	CL	1.70-2.30	A-4(1)	26	8	32.6	29.2	24.1	14.1	100	79	44		
SS-4	111+60	CL	0.76-1.21	A-2-4(0)	21	8	55.7	22.7	11.5	10.1	98	61	23		
SS-5	111+60	CL	1.52-1.97	A-1-b(0)	24	NP	84.3	14.1	0.6	1	97	41	2		
SS-6	111+60	CL	4.17-4.62	A-1-b(0)	23	NP	81.8	16.4	0.8	1	98	47	3		
SS-7	111+60	CL	10.27-10.72	A-8(7)	28	14	6.4	32.8	28.6	32.2	100	96	69	16.5	
SS-8	111+60	CL	11.79-12.34	A-2-6(0)	29	12	24.3	45.1	2.4	28.2	100	94	32		
S-18	113+40	CL	0.20-0.60	A-4(0)	23	8	29	38	16.9	18.1	100	80	41		
S-19	113+40	CL	0.60-1.86	A-7-6(17)	47	27	13.9	22.1	15.7	48.3	100	91	68	20.8	
S-20	113+40	CL	3.10-5.60	A-1-b(0)	18	NP	78.3	15.5	0.2	6	92	36	7		
S-21	113+40	CL	5.60-5.40	A-8(8)	34	12	23.9	24.3	25.6	26.2	97	78	59	43	
S-22	113+40	CL	6.40-8.80	A-1-b(0)	21	NP	73.2	15.1	1.6	10.1	92	46	11		
S-23	113+40	CL	8.80-12.80	A-8(0)	32	17	5.6	35.8	22.3	36.2	100	97	68	18.2	



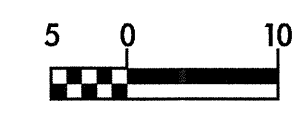
PROJECT REFERENCE NO. R-0513BA  
ROADWAY DESIGN ENGINEER

SHEET NO. 30  
HYDRAULICS ENGINEER

PRELIMINARY PLANS  
DO NOT USE FOR CONSTRUCTION

INCOMPLETE PLANS  
DO NOT USE FOR R/W ACQUISITION

CONST. REV.  
R/W REV.

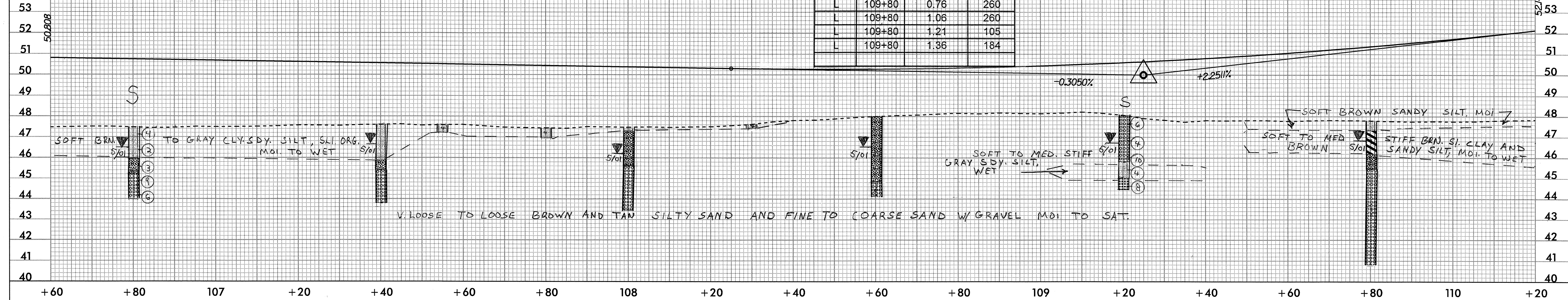


BM\*3 RR SPIKE IN BASE OF 200MM PINE  
-L- STA.108+50.479 86.765M RT  
N 100265.986 E 586796.346 EL = 48.064

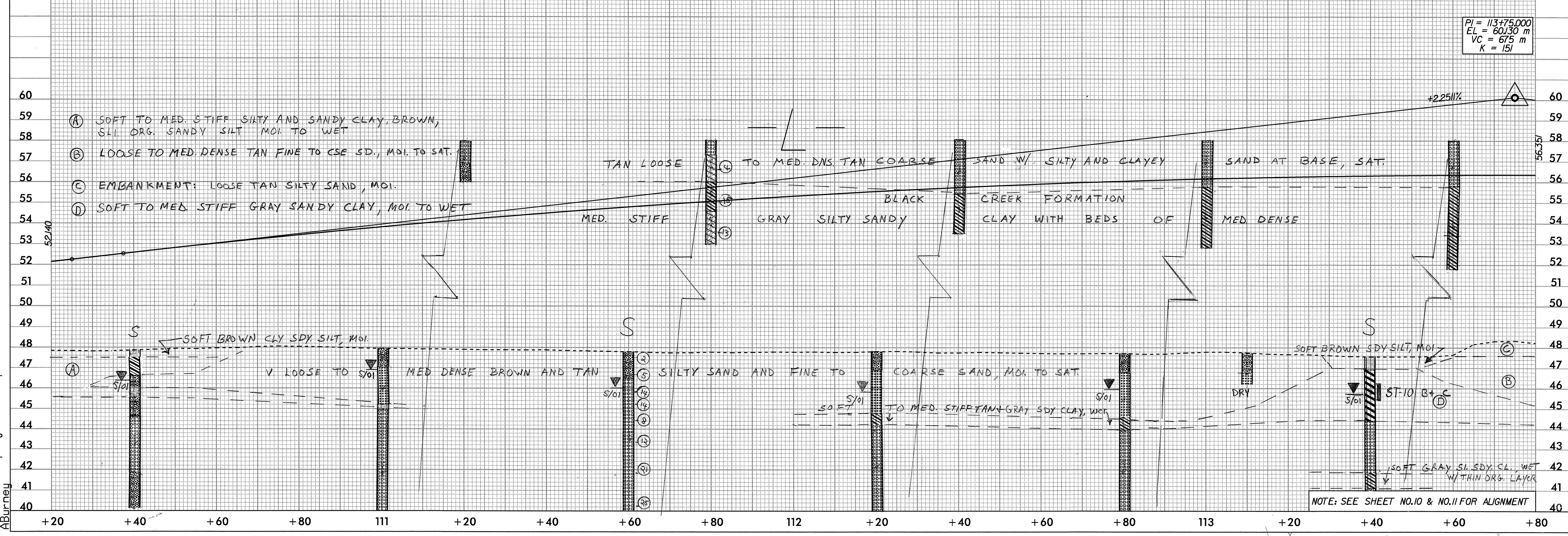
VANE

LINE	STATION	DEPTH	READING
L	109+80	0.15	170
L	109+80	0.3	260
L	109+80	0.45	260
L	109+80	0.6	250
L	109+80	0.76	260
L	109+80	1.06	260
L	109+80	1.21	105
L	109+80	1.36	184

PI = 109+25.000  
EL = 50.000 m  
VC = 200 m  
K = 78



PI = 113+75.000  
EL = 60.130 m  
VC = 67.5 m  
K = 151



NOTE: SEE SHEET NO.10 & NO.11 FOR ALIGNMENT

28-DEC-2000 14:55  
R:\0513BA\proj\0513ba.pfl  
A:\jurney