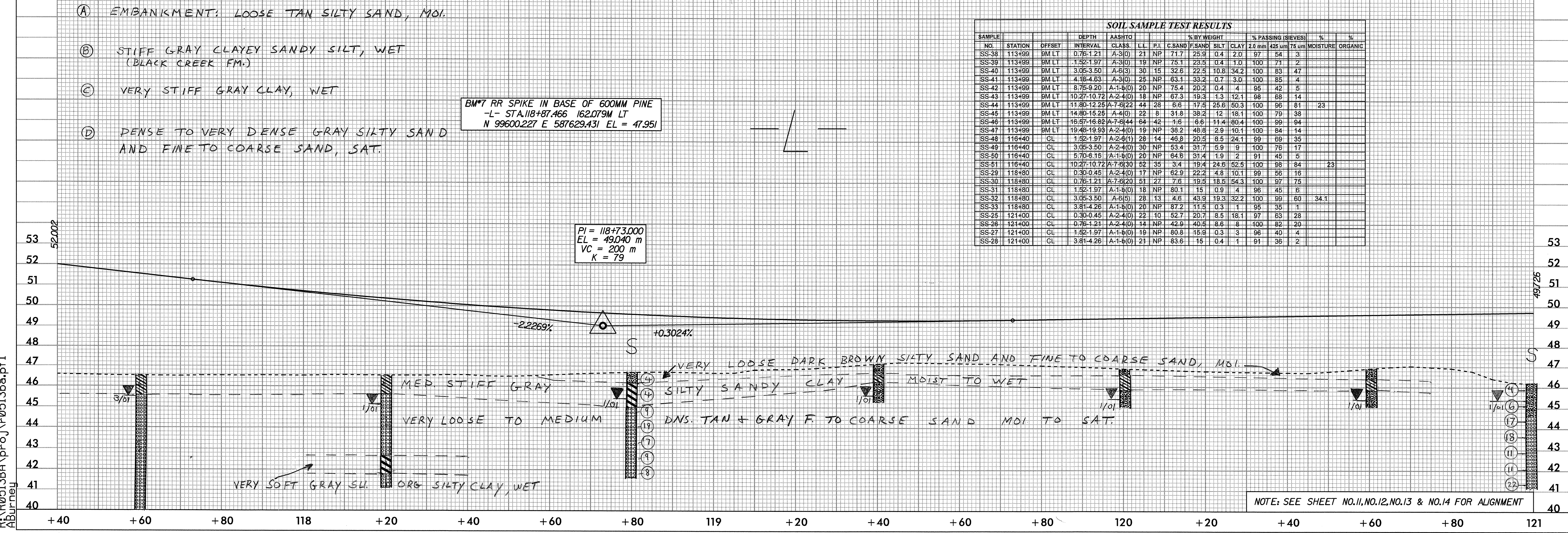


- (A) EMBANKMENT: LOOSE TAN SILTY SAND, MOI.
- (B) STIFF GRAY CLAYEY SANDY SILT, WET (BLACK CREEK FM.)
- (C) VERY STIFF GRAY CLAY, WET
- (D) DENSE TO VERY DENSE GRAY SILTY SAND AND FINE TO COARSE SAND, SAT.

BM#7 RR SPIKE IN BASE OF 600MM PINE
 -L- STA.118+87.466 162079M LT
 N 99600227 E 587629.431 EL = 47.951

PI = 118+73.000
 EL = 49.040 m
 VC = 200 m
 K = 79

SOIL SAMPLE TEST RESULTS													
SAMPLE NO.	STATION	OFFSET	DEPTH	AASHTO CLASS	LL	P.I.	C.SAND	F.SAND	SILT	CLAY	% PASSING (SIEVES)	% MOISTURE	% ORGANIC
											2.0 mm	425 um	75 um
SS-38	113499	9M LT	0.76-1.21	A-3(0)	21	NP	71.7	25.9	0.4	2.0	97	54	3
SS-39	113499	9M LT	1.52-1.97	A-3(0)	19	NP	75.1	23.5	0.4	1.0	100	71	2
SS-40	113499	9M LT	3.05-3.50	A-6(3)	30	15	32.6	22.5	10.8	34.2	100	83	47
SS-41	113499	9M LT	4.18-4.63	A-3(0)	25	NP	63.1	33.2	0.7	3.0	100	85	4
SS-42	113499	9M LT	8.75-9.20	A-1-b(0)	20	NP	75.4	20.2	0.4	4	95	42	5
SS-43	113499	9M LT	10.27-10.72	A-2-4(0)	18	NP	67.3	19.3	1.3	12.1	98	68	14
SS-44	113499	9M LT	11.80-12.25	A-7-6(2)	44	28	6.6	17.8	25.6	60.3	100	96	81
SS-45	113499	9M LT	14.80-15.25	A-4(0)	22	8	31.8	38.2	12	18.1	100	79	38
SS-46	113499	9M LT	16.87-17.32	A-7-6(4)	64	42	1.6	4.5	11.4	80.4	100	99	64
SS-47	113499	9M LT	19.48-19.93	A-2-4(0)	19	NP	38.2	48.8	2.9	10.1	100	84	14
SS-48	116440	CL	1.52-1.97	A-2-6(1)	28	14	48.8	20.5	8.5	24.1	99	69	35
SS-49	116440	CL	3.05-3.50	A-2-4(0)	30	NP	53.4	31.7	5.9	9	100	76	17
SS-50	116440	CL	5.70-6.15	A-1-b(0)	20	NP	64.8	31.4	1.9	2	91	45	5
SS-51	116440	CL	10.27-10.72	A-7-6(30)	62	35	3.4	19.4	24.6	52.5	100	98	84
SS-29	118480	CL	0.30-0.45	A-2-4(0)	17	NP	62.9	22.2	4.8	10.1	99	56	16
SS-30	118480	CL	0.76-1.21	A-7-6(20)	51	27	7.6	19.5	18.5	54.3	100	97	75
SS-31	118480	CL	1.52-1.97	A-1-b(0)	18	NP	80.1	15	0.9	4	96	45	6
SS-32	118480	CL	3.05-3.50	A-6(5)	28	13	4.6	43.9	19.3	32.2	100	99	60
SS-33	118480	CL	3.81-4.26	A-1-b(0)	20	NP	87.2	11.5	0.3	1	95	35	1
SS-25	121400	CL	0.30-0.45	A-2-4(0)	22	10	52.7	20.7	8.5	18.1	97	63	28
SS-26	121400	CL	0.76-1.21	A-2-4(0)	14	NP	42.9	40.6	8.6	8	100	82	20
SS-27	121400	CL	1.52-1.97	A-1-b(0)	19	NP	80.8	15.8	0.3	3	96	40	4
SS-28	121400	CL	3.81-4.26	A-1-b(0)	21	NP	83.6	15	0.4	1	91	36	2



NOTE: SEE SHEET NO.11, NO.12, NO.13 & NO.14 FOR ALIGNMENT

28-DEC-2000 14:55 R:\R0513BA\proj\0513ba.pf1