

5 0 10

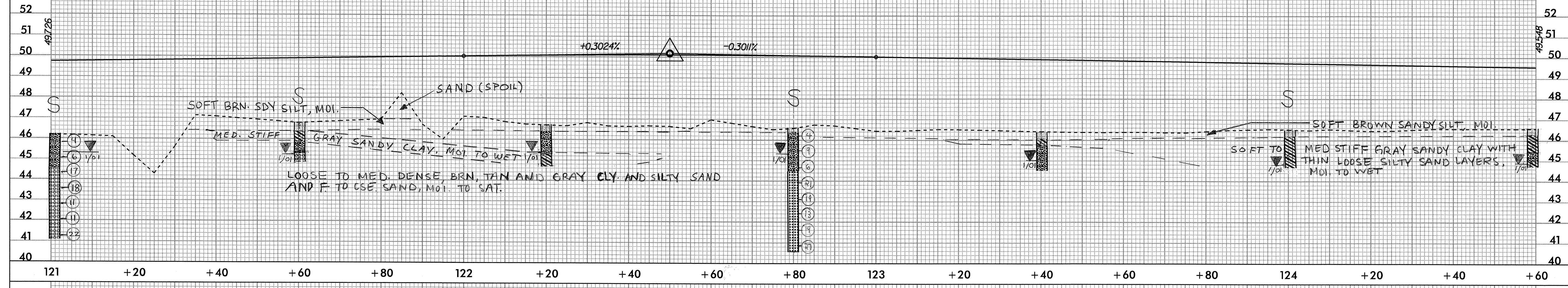
CONST. REV.

R/W REV.

PROJECT REFERENCE NO. R-0513BA	SHEET NO. 32
ROADWAY DESIGN ENGINEER	HYDRAULICS ENGINEER
PRELIMINARY PLANS DO NOT USE FOR CONSTRUCTION INCOMPLETE PLANS DO NOT USE FOR R/W ACQUISITION	

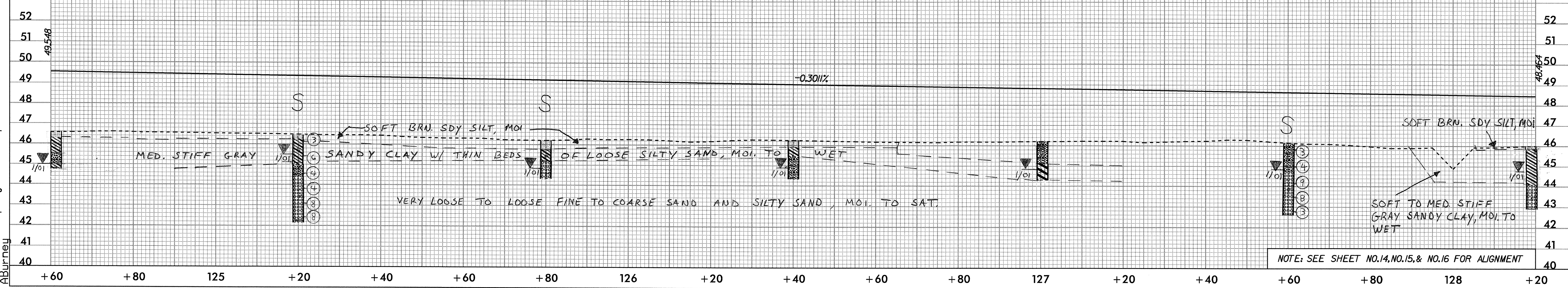
BM*8 RR SPIKE IN BASE OF 250MM PINE
 -L- STA.122+36.974 112.549M RT
 N 99155.737 E 587627.237 EL = 47.231

PI = 122+50.000
 EL = 50.180 m
 VC = 100 m
 K = 166



SOIL SAMPLE TEST RESULTS

SAMPLE NO.	STATION	OFFSET	DEPTH INTERVAL	AASHTO CLASS.	L.L.	P.I.	% BY WEIGHT				% PASSING (SIEVES)			% MOISTURE ORGANIC	
							C.SAND	F.SAND	SILT	CLAY	2.0 mm	425 um	75 um	MOISTURE	ORGANIC
SS-25	121+00	CL	0.30-0.45	A-2-4(0)	22	10	52.7	20.7	8.5	18.1	97	63	26		
SS-26	121+00	CL	0.76-1.21	A-2-4(0)	14	NP	42.9	40.5	8.6	8.0	100	82	20		
SS-27	121+00	CL	1.52-1.97	A-1-B(0)	19	NP	80.8	15.9	3.3	3.0	96	40	4		
SS-28	121+00	CL	3.81-4.26	A-1-B(0)	21	NP	83.6	15	0.4	1.0	91	36	2		
S-11	121+60	CL	0.46-0.76	A-6(5)	34	17	28.4	21.9	9.5	40.2	100	85	51		
SS-67	122+80	CL	1.52-1.97	A-2-4(0)	17	3	50.7	26.9	10.3	12.1	97	63	24		
SS-68	122+80	CL	2.29-2.74	A-3(0)	21	NP	75.5	23.5	0.9	2	97	53	4		
SS-69	122+80	CL	3.81-4.26	A-3(0)	20	NP	59.8	38.5	0.7	1	96	64	2		
S-12	124+00	CL	0.30-0.91	A-6(4)	31	16	26.9	26.3	10.7	34.1	100	87	48		
S-13	124+00	CL	0.91-1.37	A-6(8)	40	21	26.7	21.9	10.3	42.1	100	86	55		
S-14	124+00	CL	1.37-1.83	A-6(6)	34	16	24.1	23.7	14.1	38.1	100	86	56		
SS-65	125+20	CL	0.30-0.45	A-6(8)	38	21	23	27.3	16.4	34.3	100	86	55	16.7	
SS-66	125+20	CL	2.29-2.74	A-1-B(0)	17	NP	83.7	13	0.2	3	100	44	4		
S-15	125+80	CL	0.30-0.45	A-4(0)	23	7	28.7	33.5	16.7	22.1	100	88	41		
S-16	125+80	CL	0.45-0.91	A-6(3)	30	15	27.7	28.5	7.7	36.1	100	90	46		
S-17	125+80	CL	0.91-1.83	A-1-B(0)	24	NP	86	5.4	0.6	8	99	37	9		
SS-58	127+60	CL	0.76-1.21	A-2-4(0)	21	9	55.6	22.6	5.7	16.2	100	73	23		
SS-59	127+60	CL	2.29-2.74	A-1-B(0)	19	NP	86.4	10.6	0	3	99	46	3		



NOTE: SEE SHEET NO.14, NO.15, & NO.16 FOR ALIGNMENT

28-DEC-2000 14:55
 R:\R0513BA\proj\r0513ba.pfl
 Aburney