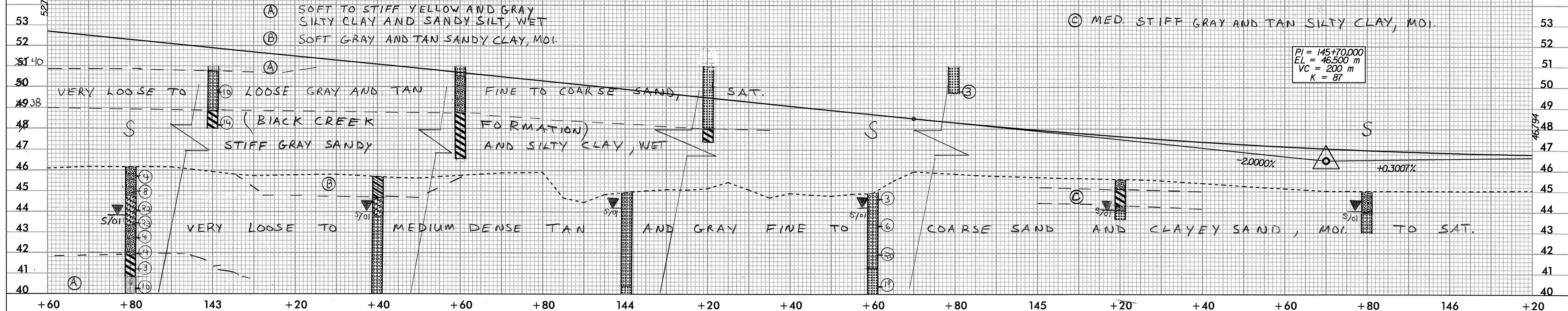


CONST. REV.
R/W REV.

BM#12 RR SPIKE IN BASE OF 200MM PINE
-L- STA.145+07.56 78.921M LT
N 97481.341 E 589172.159 EL = 46.111

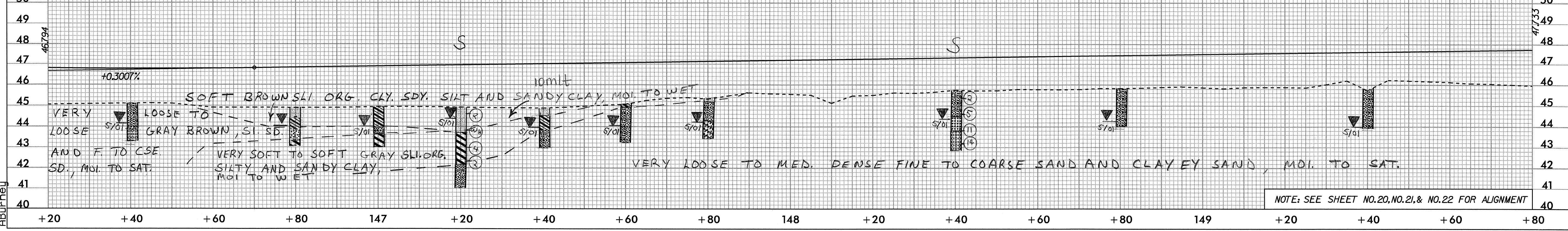
SOIL SAMPLE TEST RESULTS															
SAMPLE NO.	STATION	OFFSET	DEPTH INTERVAL	AASHTO CLASS.	LL	PI	% BY WEIGHT				% PASSING (SIEVES)			MOISTURE	ORGANIC
							C-SAND	F-SAND	SILT	CLAY	2.0 mm	425 um	75 um		
SS-108	142+80	CL	0.30-0.45	A-2-4(0)	17	NP	59.7	23.7	7.4	14.2	98	57	18		
SS-109	142+80	CL	1.52-1.97	A-2-7(1)	46	25	65.7	4.7	2.4	22.2	90	43	23		
SS-110	142+80	CL	2.29-2.74	A-2-6(0)	35	18	79.8	4.2	0.9	10.1	79	24	8		
SS-111	142+80	CL	3.05-3.50	A-2-4(0)	22	NP	10.7	77.8	0.4	11.1	100	96	14		
SS-112	142+80	CL	4.57-5.02	A-7-6(47)	70	50	3.8	12.5	19.2	64.6	100	98	87	42.6	
SS-113	142+80	CL	5.64-6.09	A-4(2)	33	9	8.1	54.1	23.6	14.1	100	96	50		
SS-114	142+80	CL	7.19-7.64	A-1-5(0)	45	NP	82.9	2.4	2.9	10.1	80	48	12		
SS-124	144+80	CL	0.30-0.45	A-1-5(0)	19	NP	90.3	8.5	0.2	1	97	35	2		
SS-125	144+80	CL	2.65-3.10	A-1-5(0)	16	NP	81.6	15.3	1.1	2	98	34	4		
SS-126	144+80	CL	4.18-4.63	A-3(0)	18	NP	67.4	29.5	0.1	3	100	71	4		
SS-127	144+80	CL	5.70-6.15	A-3(0)	27	NP	65.5	26.3	4.1	4	95	57	9		
S-56	145+80	CL	0.30-0.70	A-2-4(0)	23	9	47.1	19.6	12.1	21.3	98	68	35		
SS-131	147+20	CL	0.30-0.45	A-4(1)	33	6	32	16.4	21.3	39.4	98	77	52	18	5.2
SS-132	147+20	CL	1.52-1.97	A-7-6(21)	46	24	5.7	13.2	26.5	54.7	100	96	85	25	7.2
SS-128	148+40	CL	0.30-0.45	A-2-4(0)	23	9	43.1	27.3	11.3	18.2	98	70	33		
SS-129	148+40	CL	1.52-1.97	A-3(0)	20	NP	76.1	14.6	0.2	9.1	100	52	10		
SS-130	148+40	CL	2.29-2.74	A-1-5(0)	17	NP	83.7	10.5	0.7	5.1	98	25	6		



PI = 145+70.000
EL = 46.500 m
VC = 200 m
K = 87

← SHEET 34 DATA

SOIL SAMPLE TEST RESULTS															
SAMPLE NO.	STATION	OFFSET	DEPTH INTERVAL	AASHTO CLASS.	LL	PI	% BY WEIGHT				% PASSING (SIEVES)			MOISTURE	ORGANIC
							C-SAND	F-SAND	SILT	CLAY	2.0 mm	425 um	75 um		
SS-133	135+60	CL	0.30-0.45	A-8(12)	40	21	23.2	14.1	16.2	46.5	100	85	65		
SS-134	135+60	CL	1.52-1.97	A-6(7)	36	17	30.1	15.8	11.7	42.4	100	81	57		
SS-135	135+60	CL	2.59-3.04	A-3(0)	23	NP	79.3	18.2	0.6	2.0	99	55	3		
SS-136	135+60	CL	5.64-6.09				38.4	22.2	23.2	16.2	94	72	40		
SS-137	135+60	CL	7.16-7.61	A-3(0)	23	NP	35.7	60.9	1.4	2	99	79	5		
SS-138	135+60	CL	8.69-9.14	A-1-5(0)	21	NP	85.3	12.1	0.8	2	90	29	3		
SS-139	135+60	CL	11.18-11.73	A-4(1)	20	7	6.9	41.6	25.3	26.3	100	97	62		
SS-80	137+83	10MLT	0.76-1.11	A-6(2)	29	14	41.5	20.5	19.6	18.3	100	70	42		
SS-81	137+83	10MLT	3.05-3.50	A-1-5(0)	20	NP	89.8	9.8	0.4	0	98	41	1		
SS-82	137+83	10MLT	4.14-4.59	A-1-5(0)	20	NP	84.2	12.2	3.6	0	51	15	2		
SS-83	137+83	10MLT	5.67-6.12	A-1-5(0)	44	28	37.2	23	27.6	12.2	95	78	41	34.9	
SS-84	137+83	10MLT	7.19-7.64	A-2-6(1)	33	17	45.4	17.7	20.7	16.3	86	63	34		
SS-85	137+83	10MLT	10.24-10.69	A-7-6(31)	54	34	8.7	14.4	20.9	61	99	97	87	26.6	
SS-86	137+83	10MLT	14.81-15.26	A-7-6(22)	47	31	9.6	20.8	31	38.7	100	94	78		
SS-87	137+83	10MLT	20.94-21.39	A-2-4(0)	25	9	61.4	25	5.4	8.1	97	46	15		
SS-88	137+83	10MLT	22.46-22.91	A-2-4(0)	18	NP	13.2	67.3	3.2	16.3	100	98	24		
SS-115	140+40	CL	0.30-0.45	A-2-4(0)	19	6	58.2	16	9.7	15.2	99	60	28		
SS-116	140+40	CL	1.52-1.97	A-1-5(0)	21	NP	82.6	15.1	0.3	2	99	49	3		
SS-117	140+40	CL	1.52-1.97	A-1-5(0)	20	NP	81.7	18.2	0.1	2	99	37	3		
SS-118	140+40	CL	4.08-4.53	A-2-4(0)	26	NP	2.8	81	2	14.1	100	98	18		
SS-119	140+40	CL	8.66-9.11	A-2-4(0)	21	NP	68.9	20.7	0.6	10.1	99	52	11		
SS-120	140+40	CL	10.18-10.63	A-8(10)	36	22	18.8	25.3	13.5	42.4	100	91	61	15.3	
SS-121	140+40	CL	13.23-13.68	A-2-4(0)	22	NP	34	51.1	0.7	14.1	100	94	16		
SS-122	140+40	CL	14.75-15.20	A-7-6(13)	58	35	45.3	5.7	6.7	42.4	100	59	50	16.3	
SS-123	140+40	CL	16.28-16.73	A-7-6(33)	56	35	5.1	13.3	23	56.6	100	97	87	25.9	
S-60	142+20	CL	7.62-11.48	A-7-6(3)	41	23	51.4	12.6	1.8	34.4	99	57	37		



NOTE: SEE SHEET NO. 20, NO. 21, & NO. 22 FOR ALIGNMENT

28-DEC-2000 14:55 R:\0513BA\proj\0513ba.p11