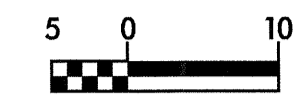


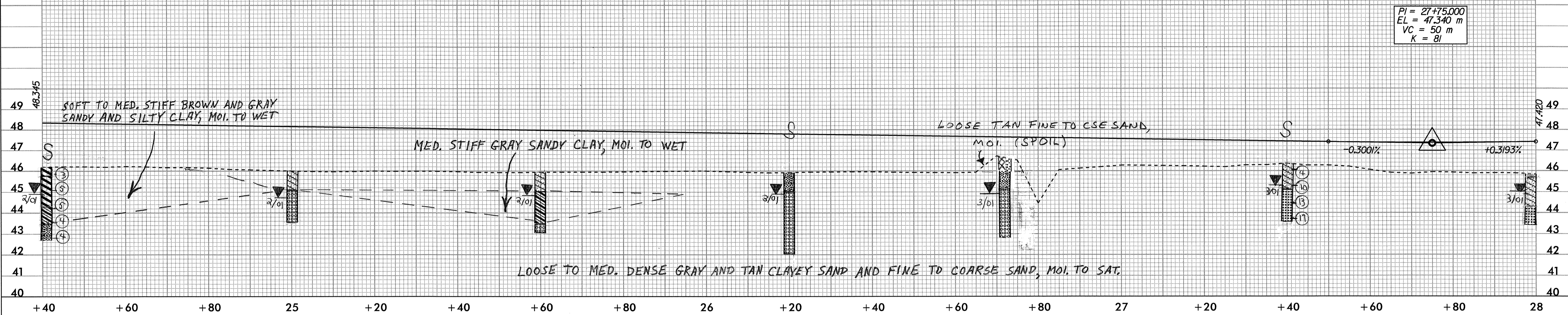


PROJECT REFERENCE NO. R-0513BA	SHEET NO. 44
ROADWAY DESIGN ENGINEER	HYDRAULICS ENGINEER
PRELIMINARY PLANS DO NOT USE FOR CONSTRUCTION INCOMPLETE PLANS DO NOT USE FOR R/W ACQUISITION	
CONST. REV.	
R/W REV.	



SOIL SAMPLE TEST RESULTS															
SAMPLE NO.	STATION	OFFSET	DEPTH INTERVAL	AASHTO CLASS.	LL	PL	% BY WEIGHT				% PASSING (SIEVES)			MOISTURE %	ORGANIC %
							C.SAND	F.SAND	SILT	CLAY	2.0 mm	425 um	75 um		
SS-55	24+40	CL	0.76-1.21	A-7-6(9)	41	24	34.1	13.7	15.8	36.4	98	75	53	19.3	
SS-56	24+40	CL	2.29-2.74	A-9(7)	32	15	20.4	23.8	27.5	28.3	100	93	62	26.4	
SS-57	24+40	CL	3.05-3.50	A-2-4(0)	18	NP	21.6	52.5	13.7	12.1	100	90	34		
S-48	28+20	CL	0.30-0.91	A-2-4(0)	17	NP	56.0	30.3	3.6	10.1	100	79	15		
S-49	28+20	CL	0.91-3.01	A-1-5(0)	17	NP	87.5	10.5	1	1	95	34	2		
SS-70	27+40	CL	0.76-1.21	A-2-6(1)	25	13	41.2	28.7	8.9	21.2	99	74	35		
SS-71	27+40	CL	1.52-1.97	A-3(0)	18	NP	80.5	33.9	1.5	4	97	66	7		
SS-72	31+00	CL	0.76-1.21	A-6(1)	38	18	21.6	12.1	23.8	42.4	100	86	71	26.4	
SS-73	31+00	CL	2.29-2.74	A-1-5(0)	22	NP	85.2	13.1	1.6	2	92	36	4		
S-51	29+20	CL	0.30-1.98	A-6(7)	39	17	31.1	14.5	11.8	42.4	100	82	57	21.3	

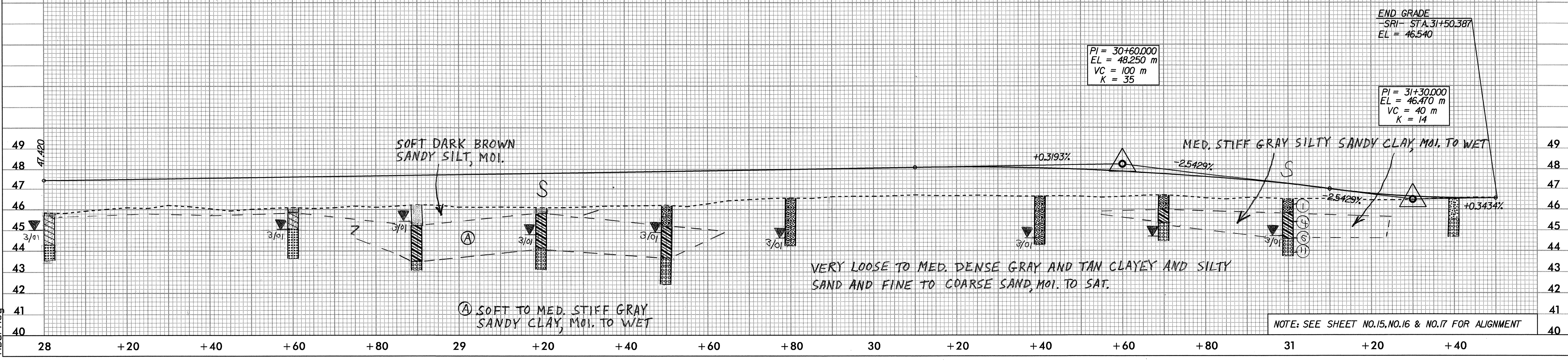
-SRI-



PI = 27+75.000
EL = 47.340 m
VC = 50 m
K = 81

VANE			
LINE	STATION	DEPTH	READING Kpa
SR1	29+20	0.45	254
SR1	29+20	0.61	250
SR1	29+20	0.91	234
SR1	29+20	1.22	166
SR1	29+20	1.52	230

-SRI-



END GRADE
-SRI- STA. 31+50.387
EL = 46.540

PI = 30+60.000
EL = 48.250 m
VC = 100 m
K = 35

PI = 31+30.000
EL = 46.470 m
VC = 40 m
K = 14

NOTE: SEE SHEET NO.15, NO.16 & NO.17 FOR ALIGNMENT

28-DEC-2000 14:55
R:\0513BA\proj\0513ba.pfl
Aburney