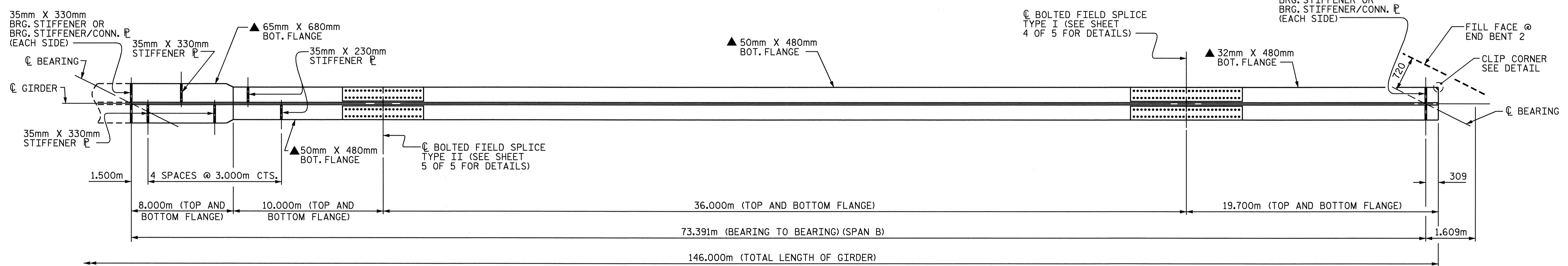


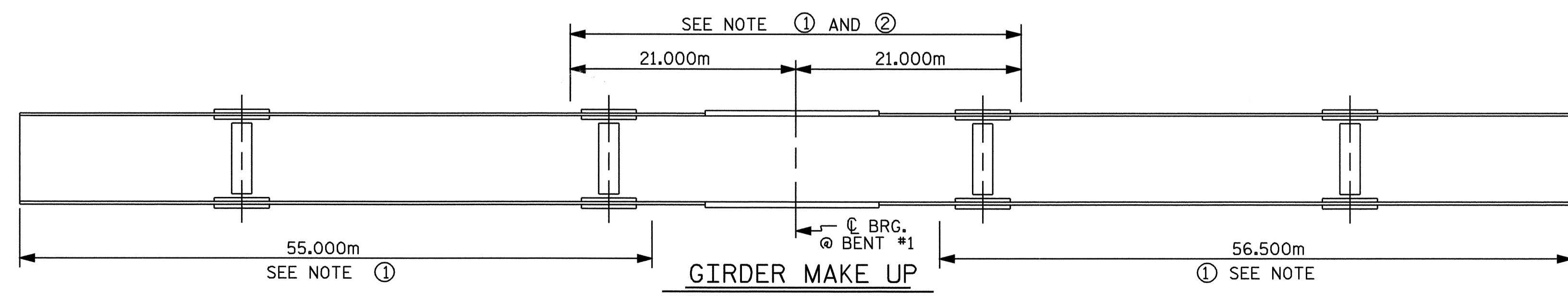
PLATE GIRDER ELEVATION

SEE BOLTED FIELD SPLICE DETAILS FOR SHEAR STUDS ON TOP SPLICE PLATES

▲ THE CONTRACTOR'S ATTENTION IS CALLED TO THE FACT THAT ALL TOP AND BOTTOM FLANGE PLATES ARE GRADE HPS 485W



BOTTOM FLANGE DETAIL

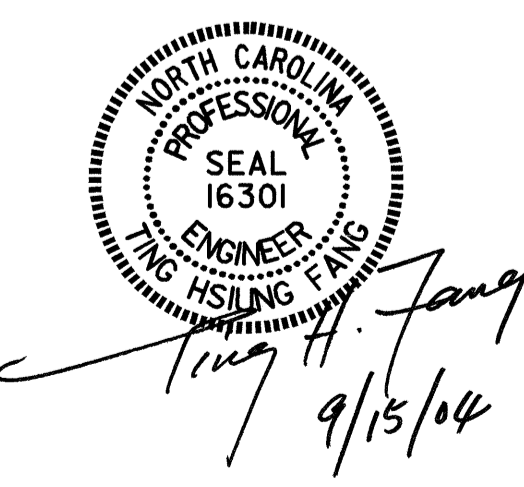


- NOTE ① CHARPY V-NOTCH TEST IS REQUIRED FOR WEB PLATES, BOTTOM FLANGE PLATES, BOTTOM FLANGE SPLICE PLATES AND WEB SPLICE PLATES FOR ALL GIRDERS AND IN ACCORDANCE WITH ARTICLE 1072-9 OF THE STANDARD SPECIFICATIONS. FOR CHARPY V-NOTCH TEST, SEE SPECIAL PROVISIONS.
- NOTE ② NO WELDING OF FORMS OR FALSEWORK TO THE TOP FLANGE WILL BE PERMITTED IN THIS REGION.

CHARPY V-NOTCH TESTS FOR CONTINUOUS PLATE GIRDERS

PROJECT NO. R-513A
ROBESON COUNTY
 STATION: 18+64.065 -L-

SHEET 2 OF 5



STATE OF NORTH CAROLINA
 DEPARTMENT OF TRANSPORTATION
 RALEIGH

**SUPERSTRUCTURE
 STRUCTURAL STEEL**

| REVISIONS | | | | | | SHEET NO. |
|-----------|-----|-------|-----|-----|-------|--------------|
| NO. | BY: | DATE: | NO. | BY: | DATE: | |
| 1 | | | 3 | | | TOTAL SHEETS |
| 2 | | | 4 | | | 172 |

DRAWN BY: T.A. WALTER DATE: 10/07/02
 CHECKED BY: N.Q. TRAN DATE: 7/03