

**NOTES**

ALL STRUCTURAL STEEL, EXCEPT GIRDER TOP AND BOTTOM FLANGES SHALL BE AASHTO M270 GRADE 345W STEEL AND PAINTED IN ACCORDANCE WITH SYSTEM 4 OF ARTICLE 442-7 OF THE STANDARD SPECIFICATIONS UNLESS OTHERWISE NOTED ON THE PLANS.

ALL GIRDER TOP AND BOTTOM FLANGES SHALL BE ASTM A709-03A GRADE HPS 485W STEEL AND PAINTED IN ACCORDANCE WITH SYSTEM 4 OF ARTICLE 442-7 OF THE STANDARD SPECIFICATIONS UNLESS OTHERWISE NOTED ON THE PLANS.

FOR HIGH PERFORMANCE STEEL, SEE SPECIAL PROVISIONS.

ALL DIMENSIONS SHOWN ARE HORIZONTAL OR VERTICAL, UNLESS OTHERWISE NOTED.

ALL FIELD CONNECTIONS TO BE 22.23mm DIA. HIGH STRENGTH BOLTS UNLESS OTHERWISE NOTED.

TENSION ON THE AASHTO M164M BOLTS SHALL BE CALIBRATED USING DIRECT TENSION INDICATOR WASHERS IN ACCORDANCE WITH ARTICLE 440-10 OF THE STANDARD SPECIFICATIONS.

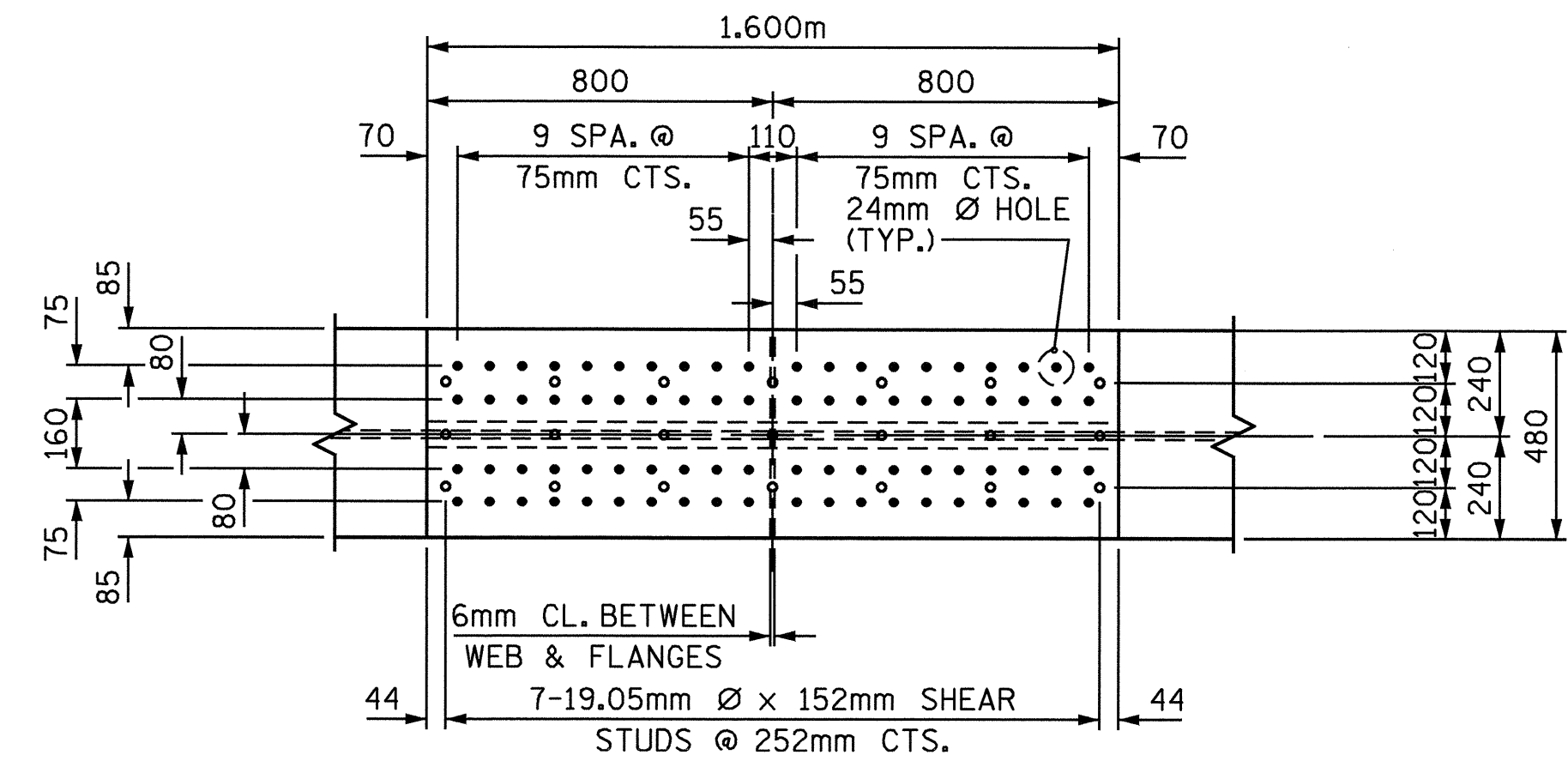
BEARING STIFFENERS ARE TO BE PLACED NORMAL TO THE WEB OF THE GIRDER AND SHALL BE PLUMB.

SHOP SPLICES ARE PERMITTED TO LIMIT THE MAXIMUM REQUIRED FLANGE PIECE LENGTHS TO 18 METERS AND WEB PIECE LENGTHS TO 14 METERS. PERMITTED FLANGE AND WEB SHOP SPLICES SHALL NOT BE LOCATED WITHIN 4.5 METERS OF MAXIMUM DEAD LOAD DEFLECTION (NOR WITHIN 4.5 METERS OF INTERMEDIATE BEARINGS OF CONTINUOUS UNITS). KEEP 600mm MINIMUM BETWEEN WEB AND FLANGE SHOP SPLICES. KEEP 150mm MINIMUM BETWEEN CONNECTOR PLATE OR TRANSVERSE STIFFENER WELDS AND WEB OR FLANGE SHOP SPLICES.

STUDS ON GIRDERS MAY BE SHIFTED UP TO 25mm IF NECESSARY TO CLEAR FLANGE SPLICE WELD.

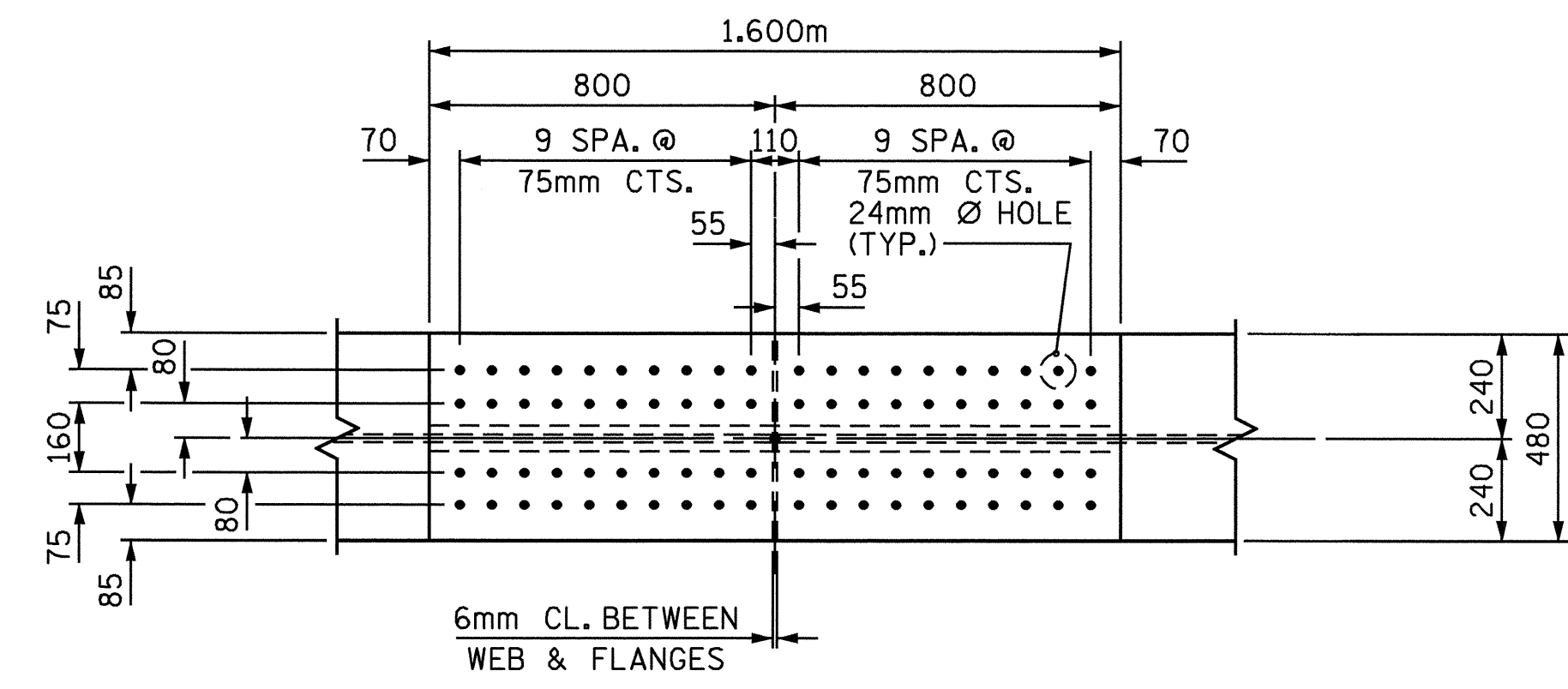
ENDS OF GIRDERS SHALL BE PLUMB.

BEARING STIFFENER MAY REQUIRE COPING IF WIDER THAN BOTTOM FLANGE TO AVOID INTERFERENCE WITH THE ANCHOR BOLT.



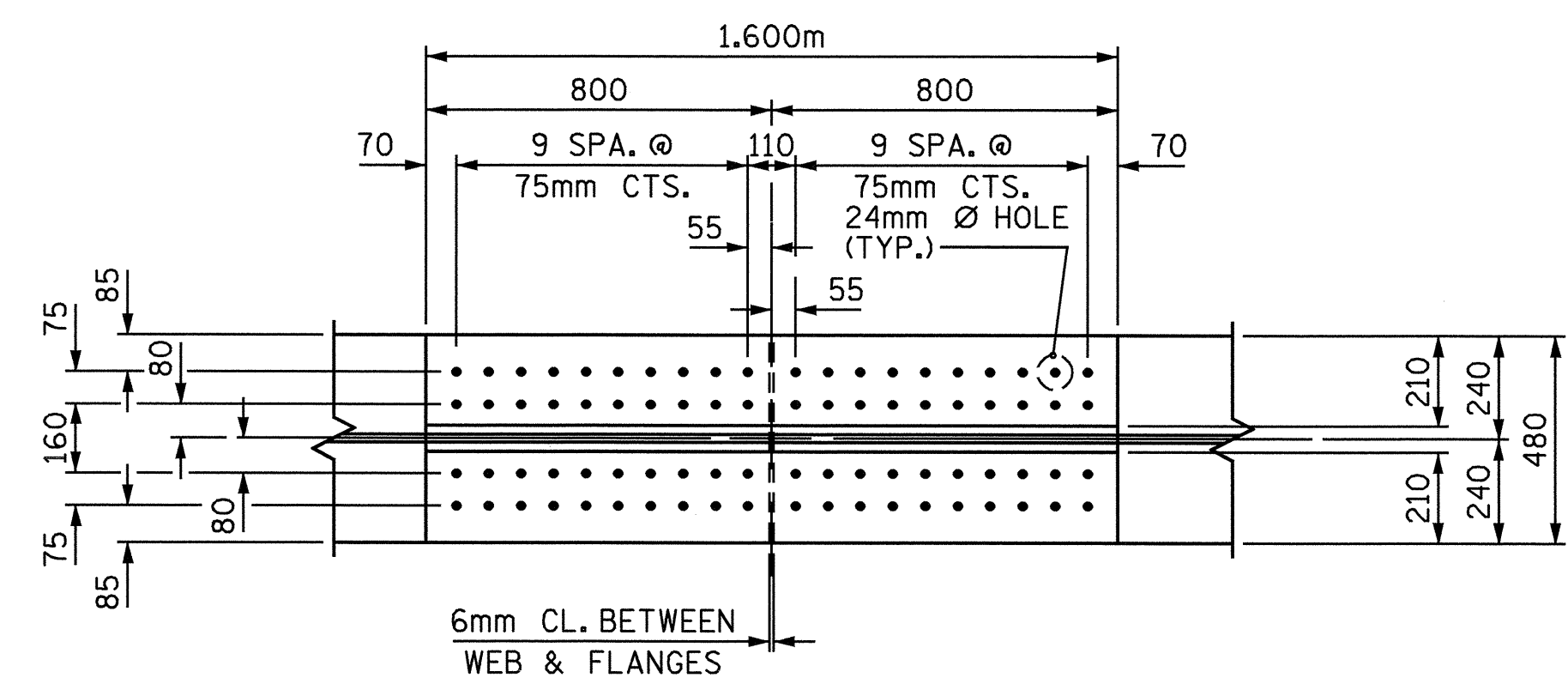
**PLAN OF TOP FLANGE**

TOP OF TOP FLANGE SHOWN.



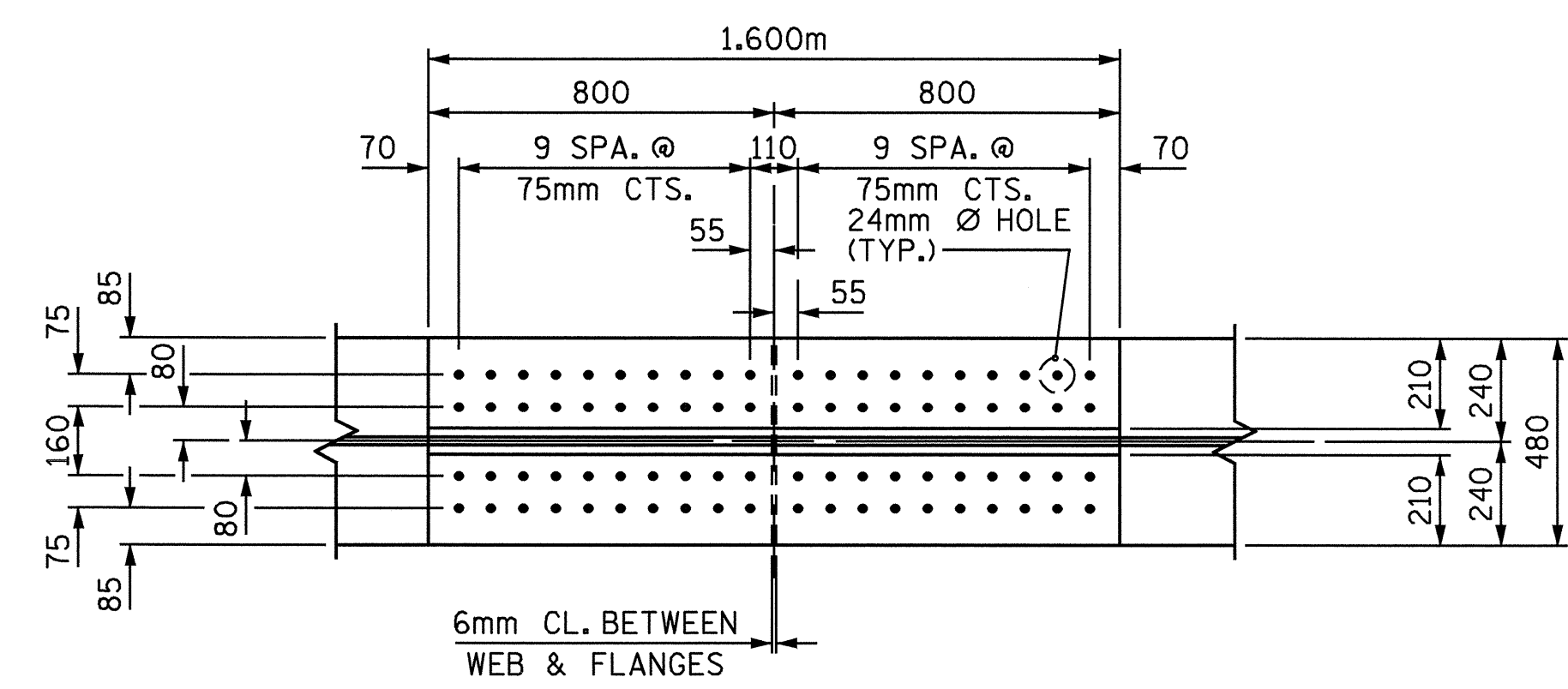
**PLAN OF BOTTOM FLANGE**

BOTTOM OF BOTTOM FLANGE SHOWN.



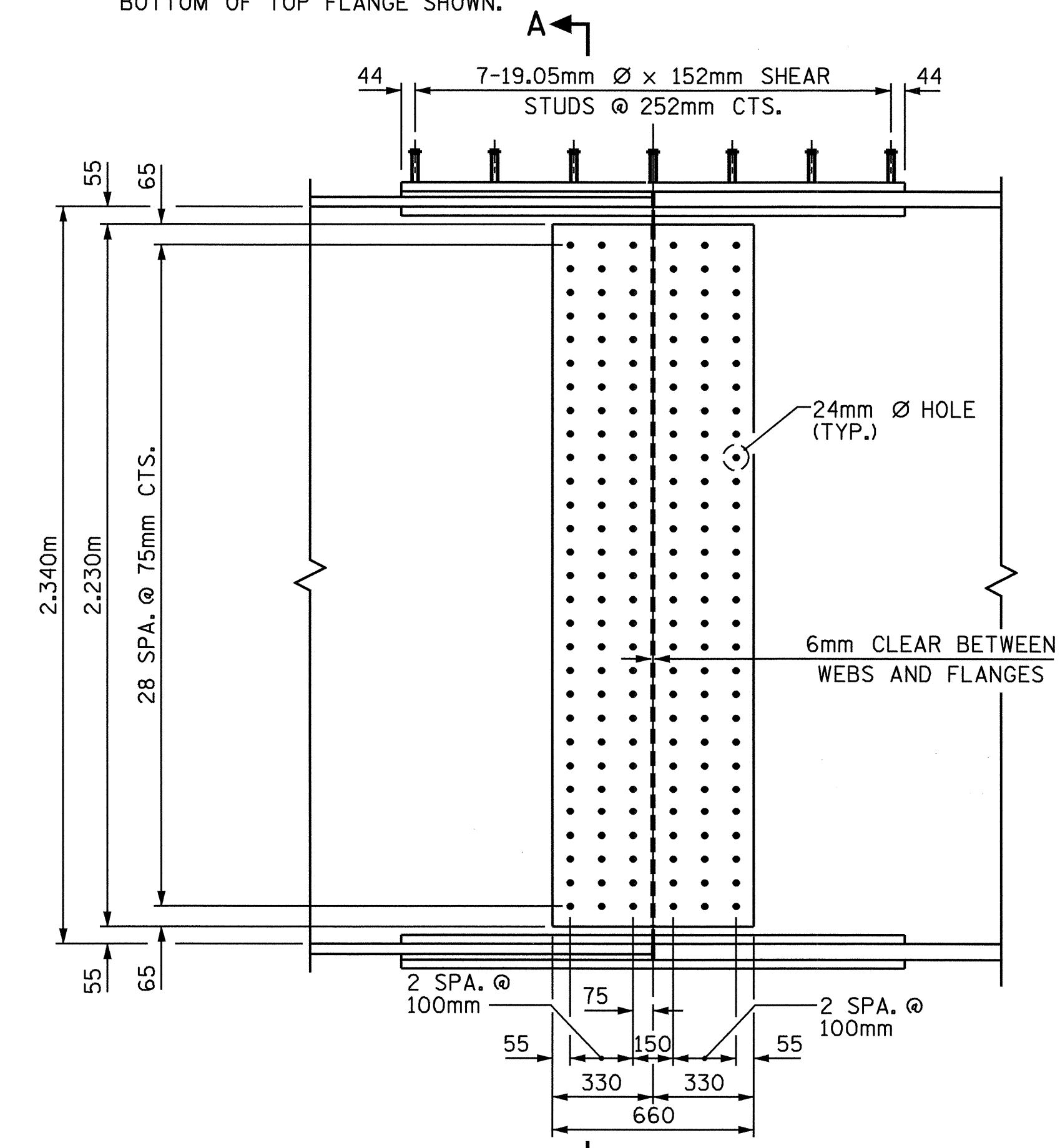
**PLAN OF TOP FLANGE**

BOTTOM OF TOP FLANGE SHOWN.

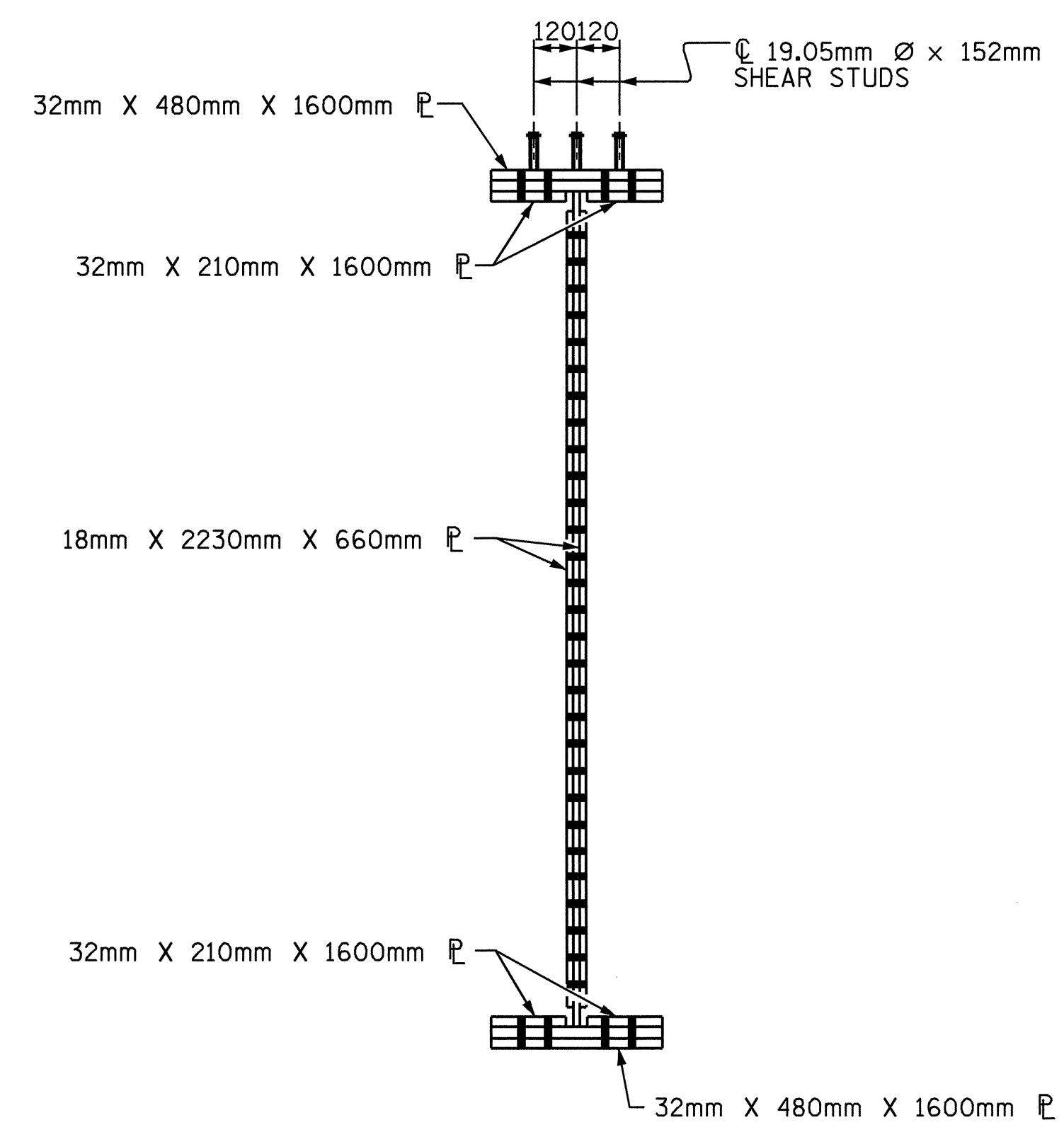


**PLAN OF BOTTOM FLANGE**

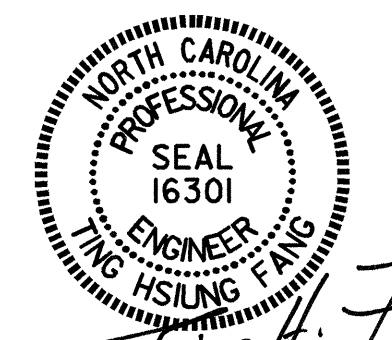
TOP OF BOTTOM FLANGE SHOWN.



**ELEVATION**



**SECTION A-A**



Ting H. Fung  
9/15/04

PROJECT NO. R-513A  
ROBESON COUNTY  
STATION: 18+64.065 -L-

SHEET 5 OF 5

STATE OF NORTH CAROLINA  
DEPARTMENT OF TRANSPORTATION  
RALEIGH

**SUPERSTRUCTURE**

**STRUCTURAL STEEL  
BOLTED FIELD SPLICE  
DETAILS (TYPE II)**

REVISIONS						SHEET NO.	
NO.	BY:	DATE:	NO.	BY:	DATE:	5-13	
1			3			TOTAL SHEETS	
2			4			172	

DRAWN BY : T.A. WALTER DATE : 8/12/03  
CHECKED BY : N.Q. TRAN DATE : 7/03