

### NOTES

FOR POT BEARINGS, SEE SPECIAL PROVISIONS.

AT ALL POINTS OF SUPPORT IN SPANS A & B, NUTS FOR ANCHOR BOLTS SHALL BE TIGHTENED FINGER TIGHT AND GIVEN AN ADDITIONAL 1/4 TURN. THE THREAD OF THE NUT AND BOLT SHALL THEN BE BURRED WITH A SHARP POINTED TOOL.

WHEN WELDING THE SOLE PLATE TO THE GIRDER, USE TEMPERATURE INDICATING WAX PENS, OR OTHER SUITABLE MEANS, TO ENSURE THAT THE TEMPERATURE OF THE BEARING DOES NOT EXCEED 121°C. TEMPERATURES ABOVE THIS MAY DAMAGE THE TFE OR ELASTOMER.

AFTER BEARING ASSEMBLY IS IN PLACE AND ANCHOR BOLTS HAVE BEEN FINALLY POSITIONED, THEY SHALL BE GROUTED IN PLACE AS SHOWN.

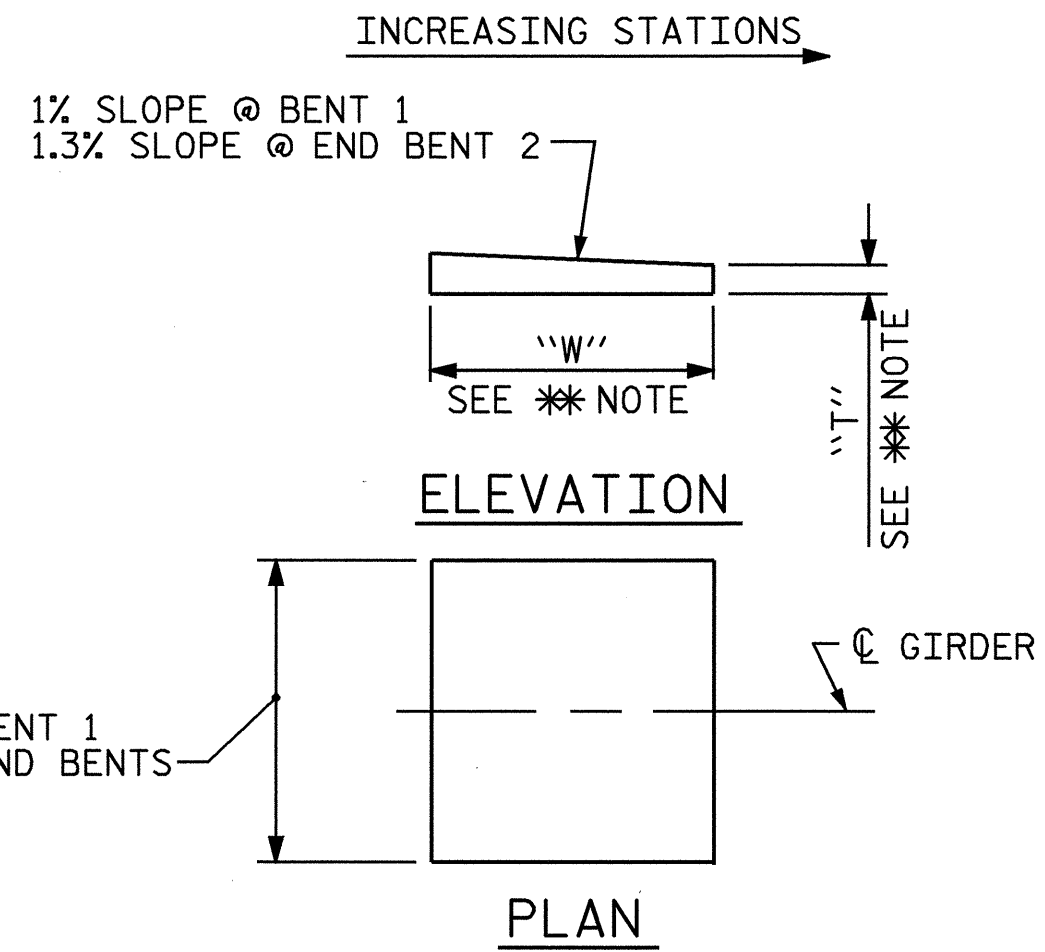
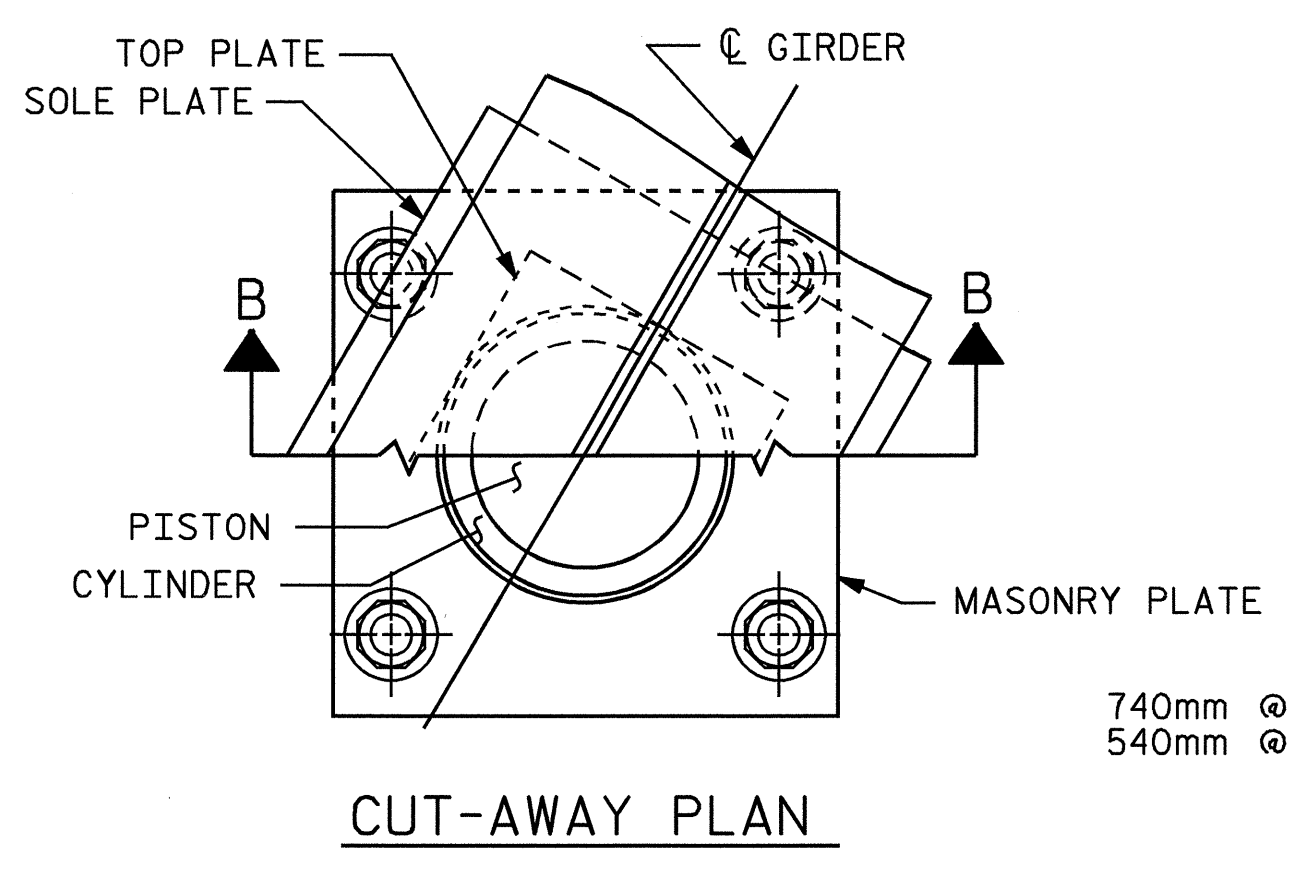
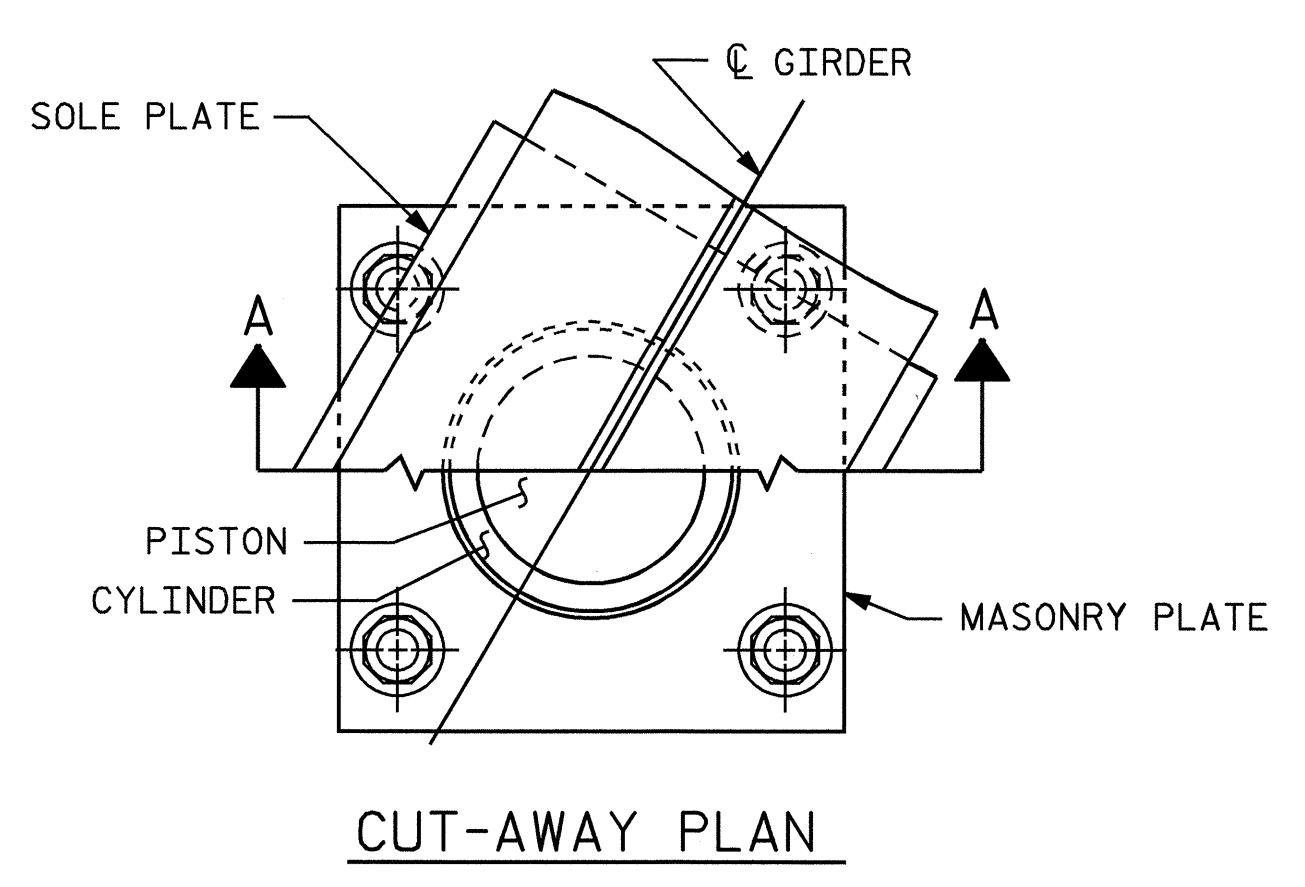
THE CLOSURE PLATE AND STANDARD PIPE FOR THE PIPE SLEEVE ASSEMBLY NEED NOT BE GALVANIZED.

SOLE PLATES SHOULD BE WELDED TO BEAM FLANGES AND ANCHOR BOLTS SHOULD BE GROUTED BEFORE FALSEWORK IS PLACED.

ALL SURFACES OF BEARING PLATES SHALL BE SMOOTH AND STRAIGHT.

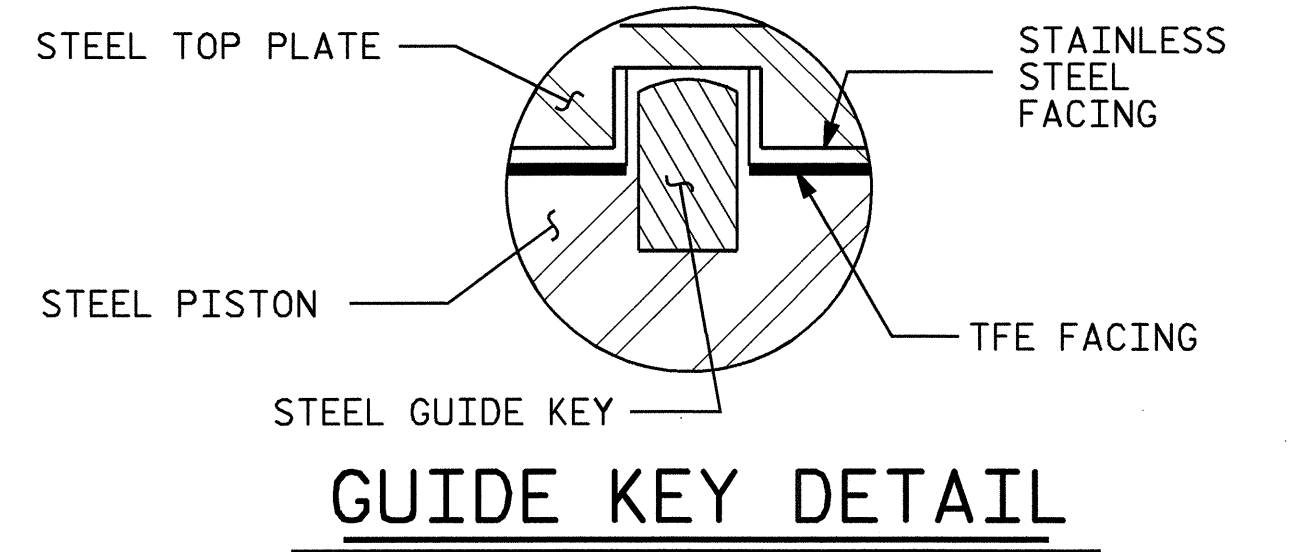
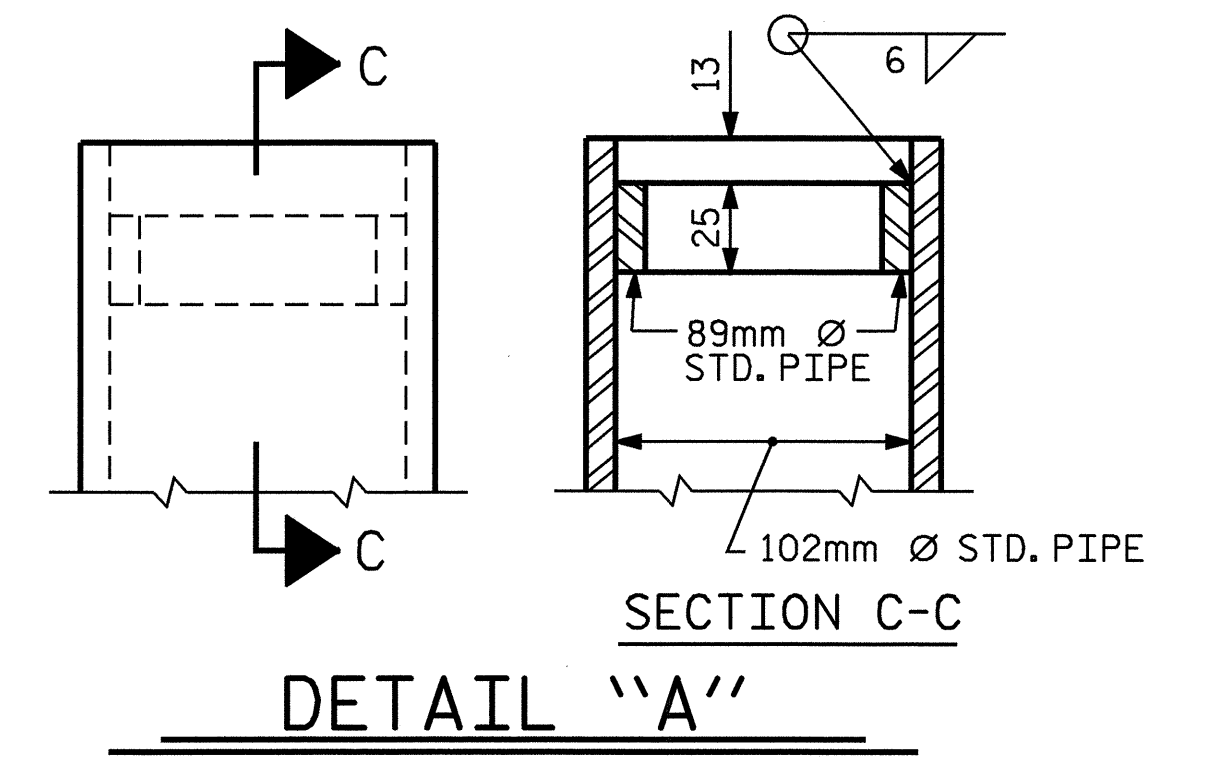
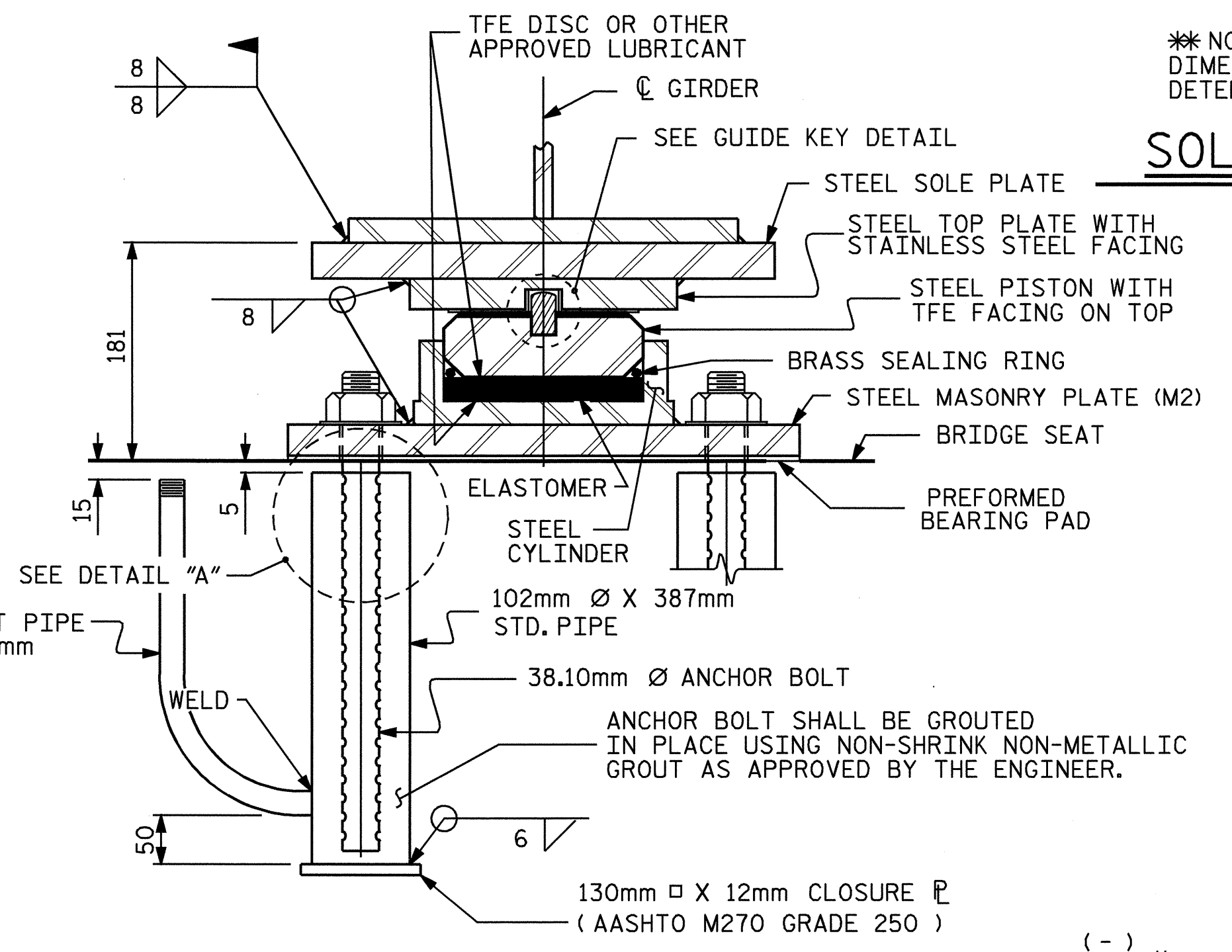
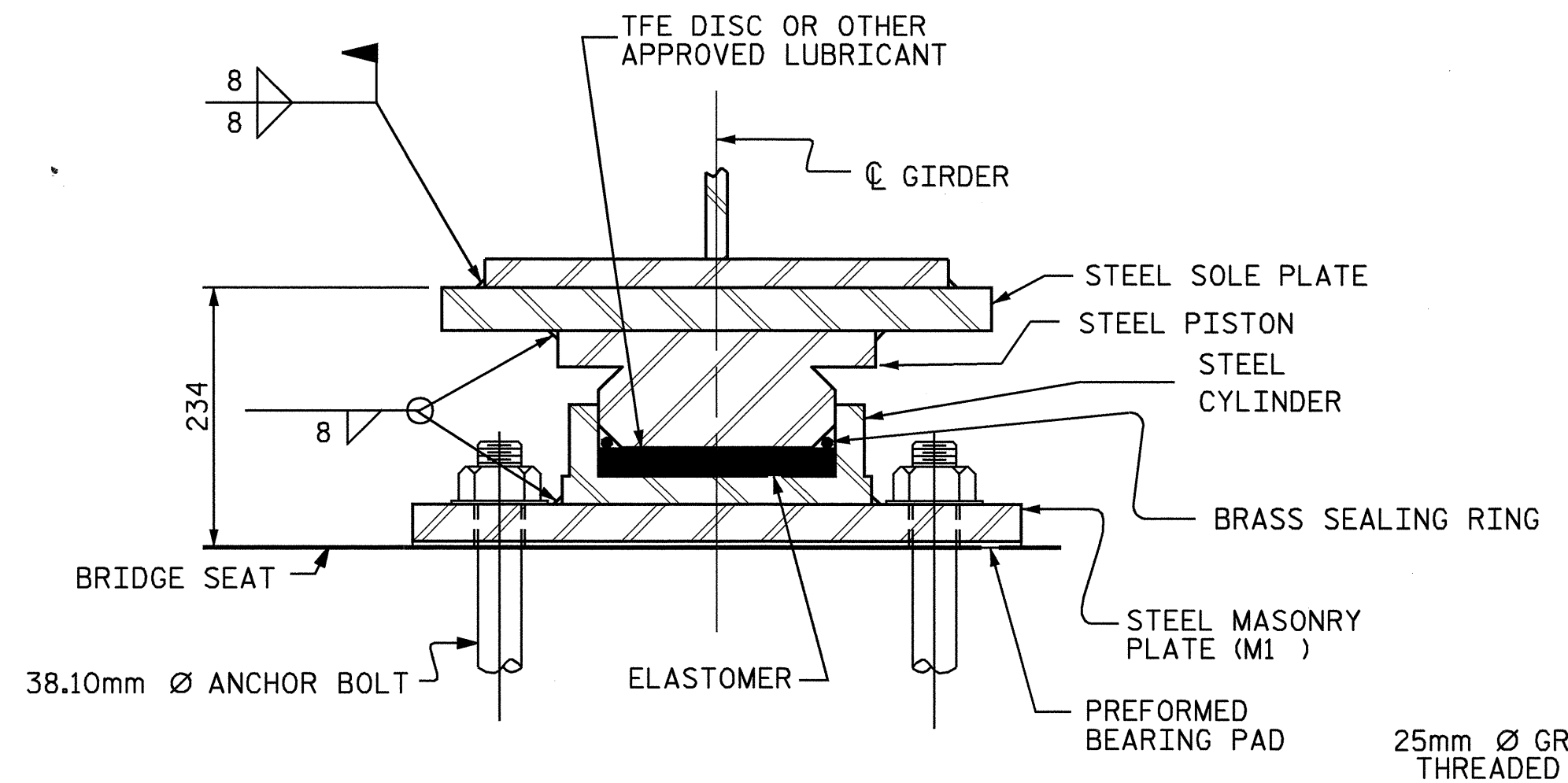
FOR THERMAL SPRAYED COATINGS (METALLIZATION), SEE SPECIAL PROVISIONS.

THE CONTRACTOR MAY SUBSTITUTE DISC BEARINGS FOR THE POT BEARINGS SHOWN. FOR OPTIONAL DISC BEARINGS, SEE SPECIAL PROVISIONS.

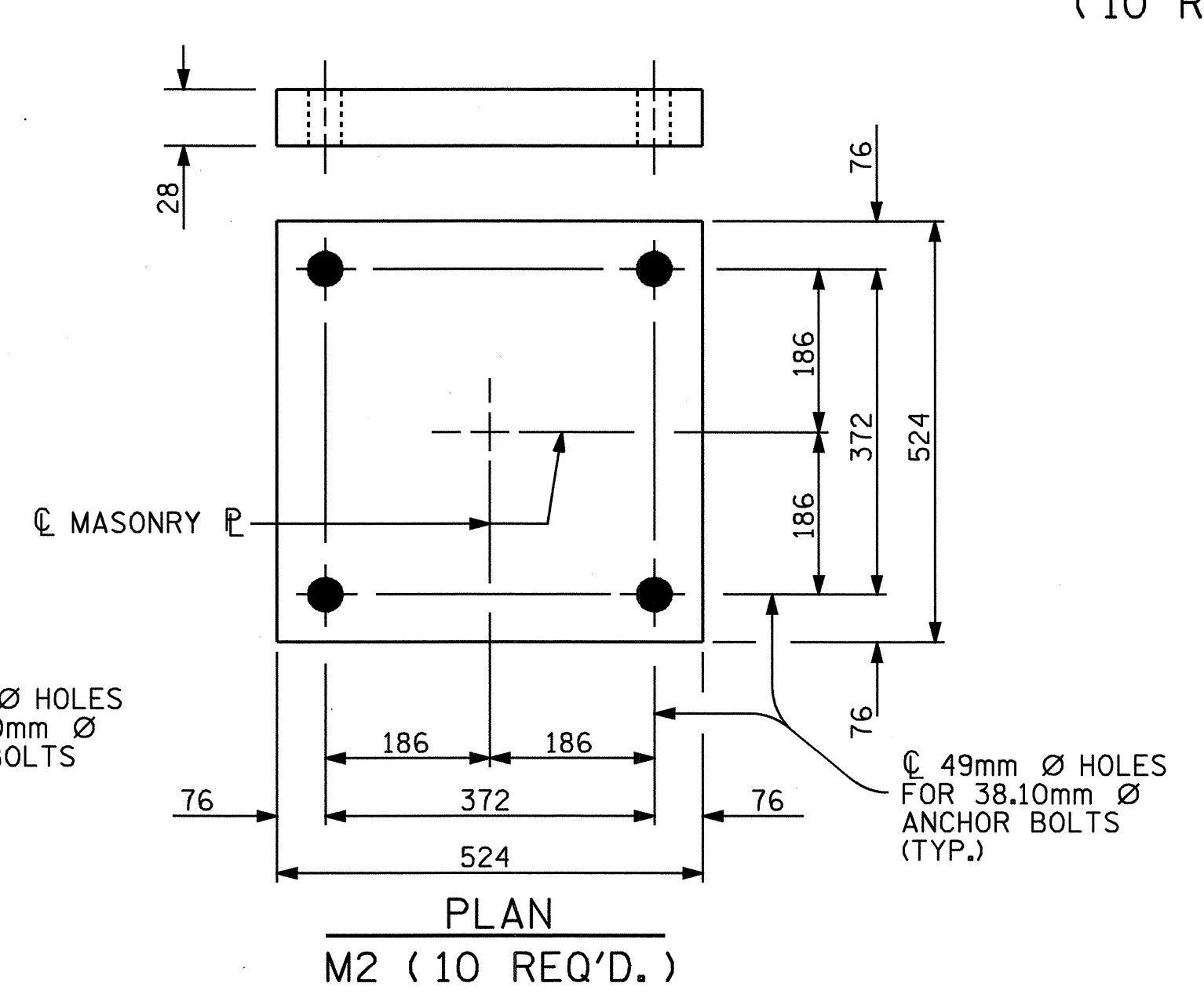
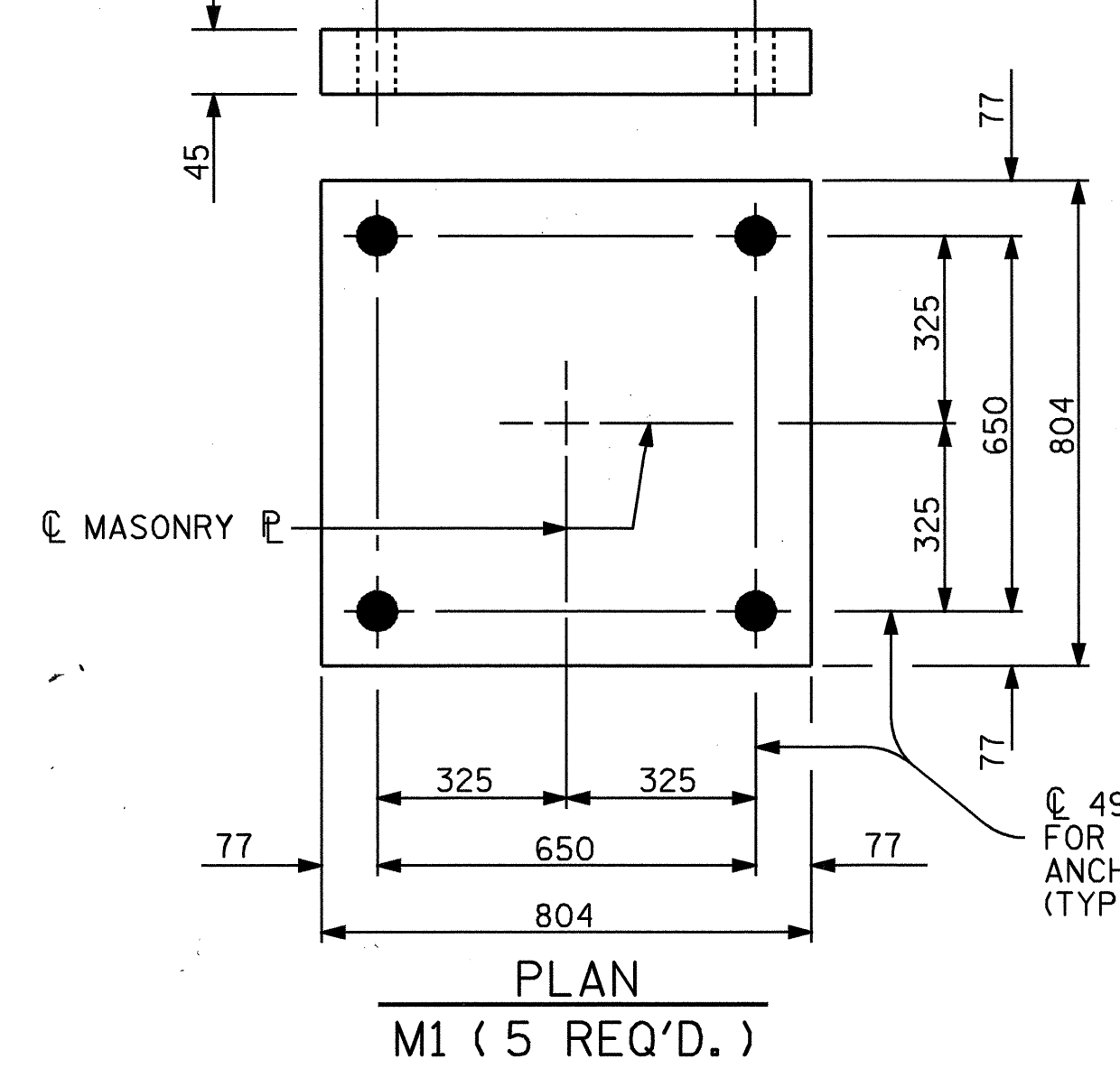


**SOLE PLATE DETAILS**

\*\*NOTE:  
DIMENSIONS "W" AND "T" ARE TO BE DETERMINED BY THE MANUFACTURER.



### POT BEARING DETAILS



### MASONRY PLATE DETAILS

### TABLE FOR PLATE SETTING DATA (EXPANSION POT BEARINGS)

TEMPERATURE AT TIME OF SETTING	0° C	16° C	32° C	*
END BENT 1	-18	0	18	-24
END BENT 2	-18	0	18	-27

\*CORRECTION FOR END ROTATION DUE TO WEIGHT OF SLAB AND COMPOSITE DEAD LOAD.

### TEMPERATURE SETTING DETAIL

### TABLE FOR LOADS AND MOVEMENTS

BEARING	LOCATION	VERTICAL LOAD (KN)			LATERAL LOAD (KN)	TOTAL MOVEMENT (mm)
		DEAD	LIVE	TOTAL		
PB1 (EXP.)	END BENT 1	985	413	1398	197	71
PB2 (FIXED)	BENT 1	3426	993	4419	685	0
PB1 (EXP.)	END BENT 2	1017	417	1434	203	71

PROJECT NO. R-513A  
ROBESON COUNTY  
STATION: 18+64.065 -L-



STATE OF NORTH CAROLINA  
DEPARTMENT OF TRANSPORTATION  
RALEIGH

STANDARD  
POT BEARING  
DETAILS

REVISIONS						SHEET NO.
NO.	BY:	DATE:	NO.	BY:	DATE:	TOTAL SHEETS
1			3			5-18
2			4			172

ASSEMBLED BY : T.A. WALTER DATE : 10/04/02  
CHECKED BY : N.Q. TRAN DATE : 7/03

DRAWN BY : RWW 8/99  
CHECKED BY : LES 8/99

ADDED 8/16/99  
REV. 10/17/00  
REV. 7/10/01

RWW/LES  
LES/RWW