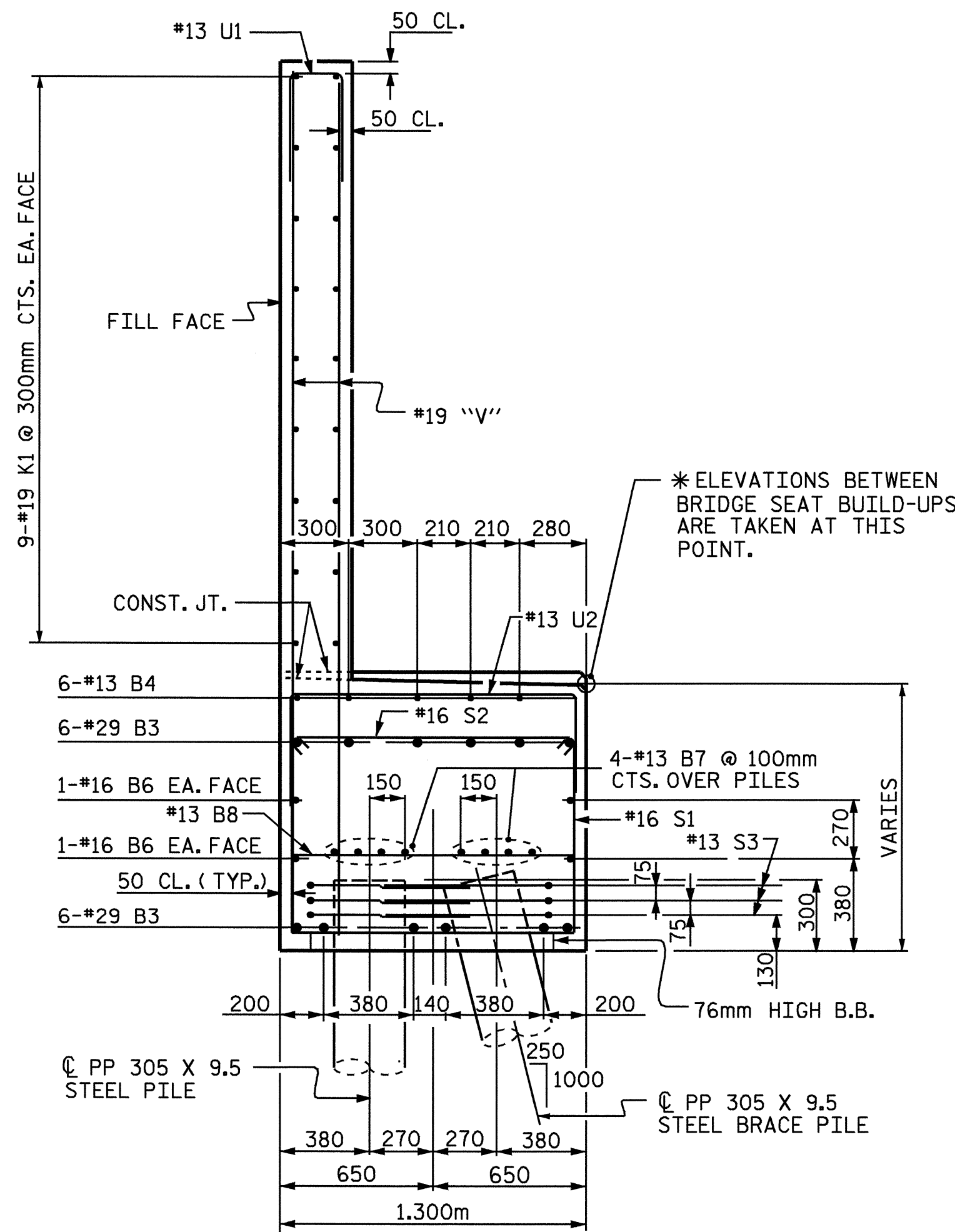
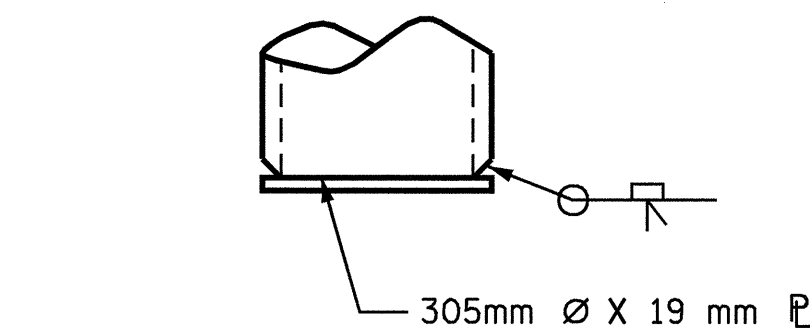


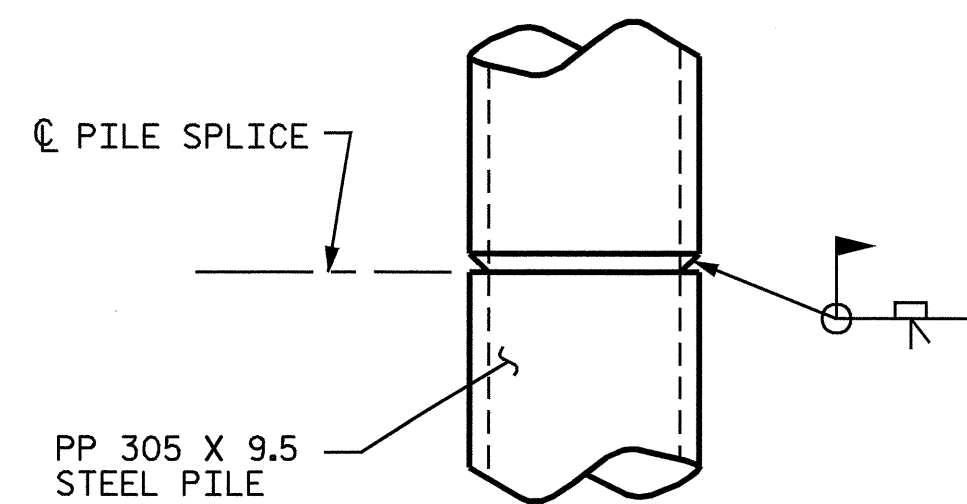
SECTION A-A



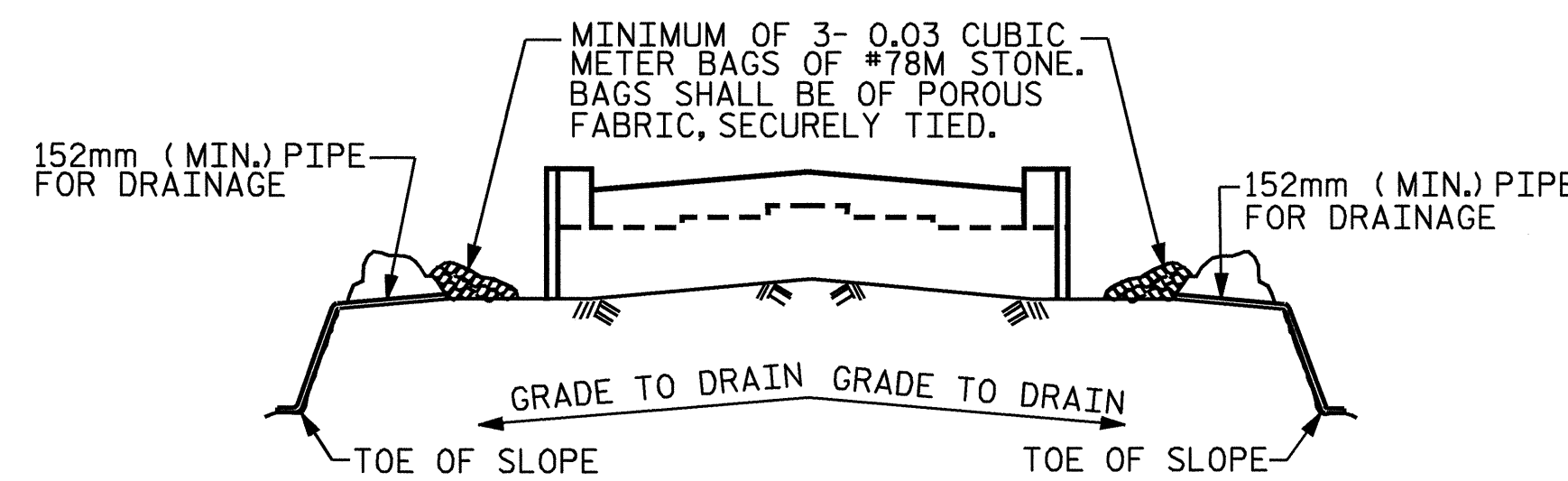
SECTION B-B



DRIVING PLATE DETAIL



PILE SPLICE DETAILS



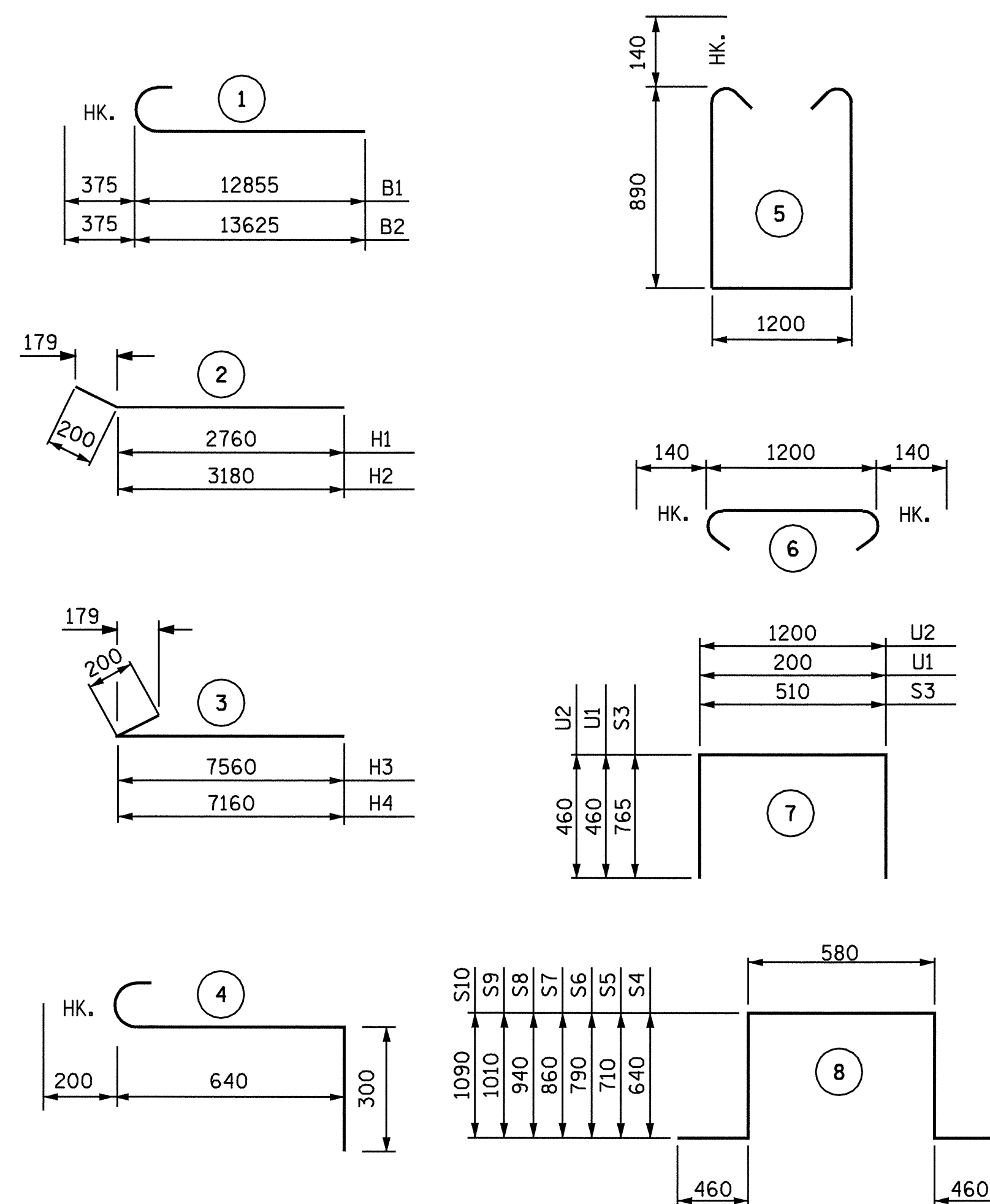
BAGGED STONE AND PIPE SHALL BE PLACED IMMEDIATELY AFTER COMPLETION OF END BENT EXCAVATION. PIPE MAY BE EITHER CONCRETE, CORRUGATED STEEL, CORRUGATED ALUMINUM ALLOY, OR CORRUGATED PLASTIC. PERFORATED PIPE WILL NOT BE ALLOWED.

BAGGED STONE SHALL REMAIN IN PLACE UNTIL THE ENGINEER DIRECTS THAT IT BE REMOVED. THE CONTRACTOR SHALL REMOVE AND DISPOSE OF SILT ACCUMULATIONS AT BAGGED STONE WHEN SO DIRECTED BY THE ENGINEER. BAGS SHALL BE REMOVED AND REPLACED WHENEVER THE ENGINEER DETERMINES THAT THEY HAVE DETERIORATED AND LOST THEIR EFFECTIVENESS.

NO SEPARATE PAYMENT WILL BE MADE FOR THIS WORK AND THE ENTIRE COST OF THIS WORK SHALL BE INCLUDED IN THE UNIT CONTRACT PRICE FOR THE SEVERAL PAY ITEMS.

TEMPORARY DRAINAGE AT END BENT

BAR TYPES



ALL BAR DIMENSIONS ARE OUT TO OUT.

BILL OF MATERIAL

END BENT 1

BAR	NO	SIZE	TYPE	LENGTH	WEIGHT
B1	12	29	1	13260	805
B2	12	29	1	14000	850
B3	12	29	STR	18000	1093
B4	6	13	STR	8500	51
B5	6	13	STR	900	5
B6	12	16	STR	13960	260
B7	48	13	STR	7280	347
B8	32	13	STR	1200	39
B9	4	19	STR	1900	17
B10	4	19	STR	1340	12
B11	4	19	STR	1940	17
H1	15	16	2	2960	69
H2	15	16	2	3380	79
H3	15	16	3	7760	181
H4	15	16	3	7360	171
J1	6	19	4	1140	15
K1	54	19	STR	14120	1704
K2	8	16	STR	1900	24
S1	150	16	5	3260	769
S2	150	16	6	1480	349
S3	96	13	7	2040	195
S4	2	19	8	2780	12
S5	2	19	8	2920	13
S6	2	19	8	3080	14
S7	2	19	8	3220	14
S8	2	19	8	3380	15
S9	2	19	8	3520	16
S10	2	19	8	3680	16
U1	120	13	7	1120	134
U2	22	13	7	2120	46
V1	240	19	STR	3420	1834
V2	31	19	STR	3820	265
V3	59	19	STR	3800	501
REINFORCING STEEL				kg	9,928

CLASS A CONCRETE BREAKDOWN

POUR #1: (CAP AND LOWER PORTION OF WINGS)	58.3 m ³
POUR #2: (BACKWALL AND UPPER PORTION OF WINGS)	41.2 m ³
TOTAL	99.5 m ³

PP 305 X 9.5 STEEL PILE CLOSED END	
NO. 34 METERS	850.0

PROJECT NO. R-513A
ROBESON COUNTY
STATION: 18+64.065 -L-

SHEET 3 OF 3

STATE OF NORTH CAROLINA
DEPARTMENT OF TRANSPORTATION
RALEIGH

SUBSTRUCTURE
END BENT 1



Ting H. Fang
10/05/04

REVISIONS						SHEET NO.
NO.	BY:	DATE:	NO.	BY:	DATE:	S-25
1			3			TOTAL SHEETS
2			4			172

DRAWN BY: N. Q. TRAN DATE: MAY-03
CHECKED BY: M. A. ALLEN DATE: 3-04

04-OCT-2004 11:17
w:\SquadM\0513a\str\nttran\MloromB\wkg\513a0leb.dgn
ntran