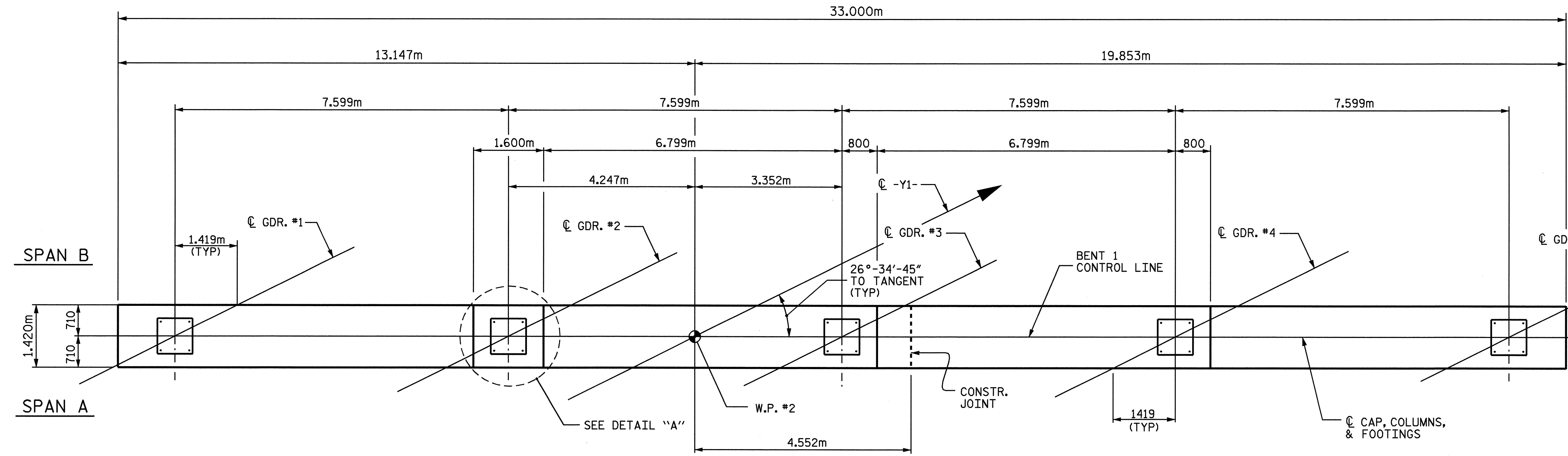
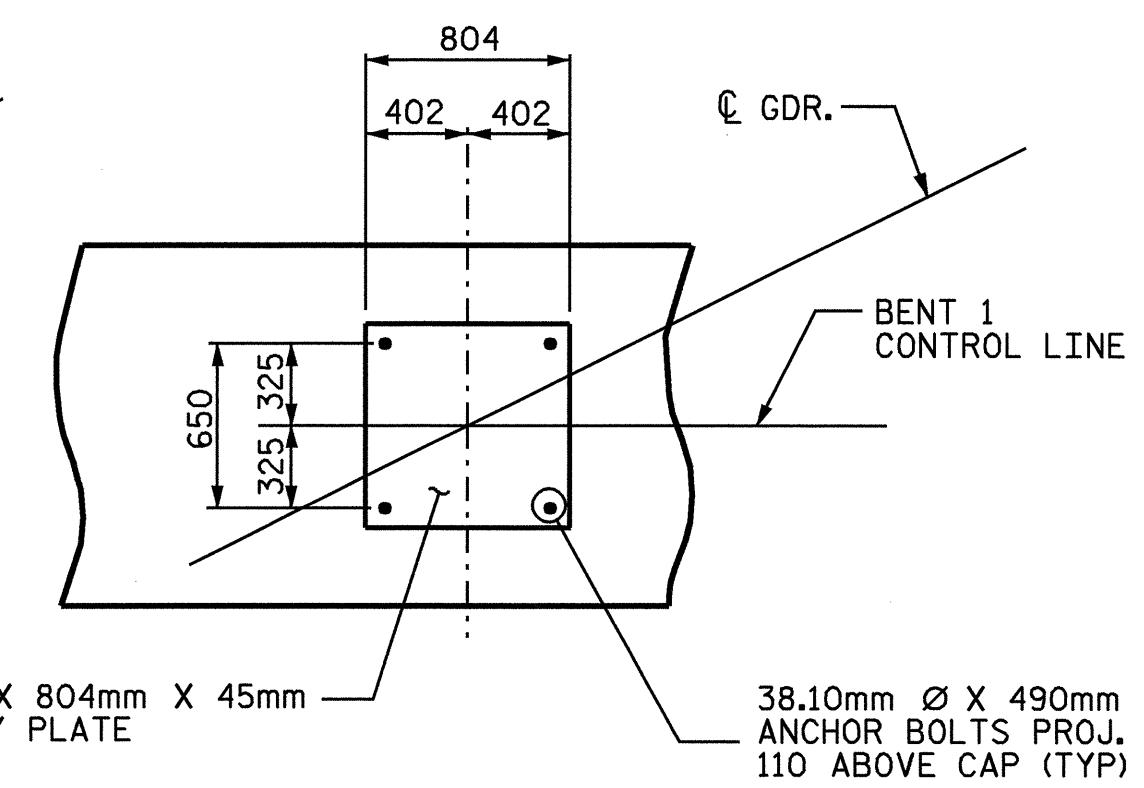


NOTES

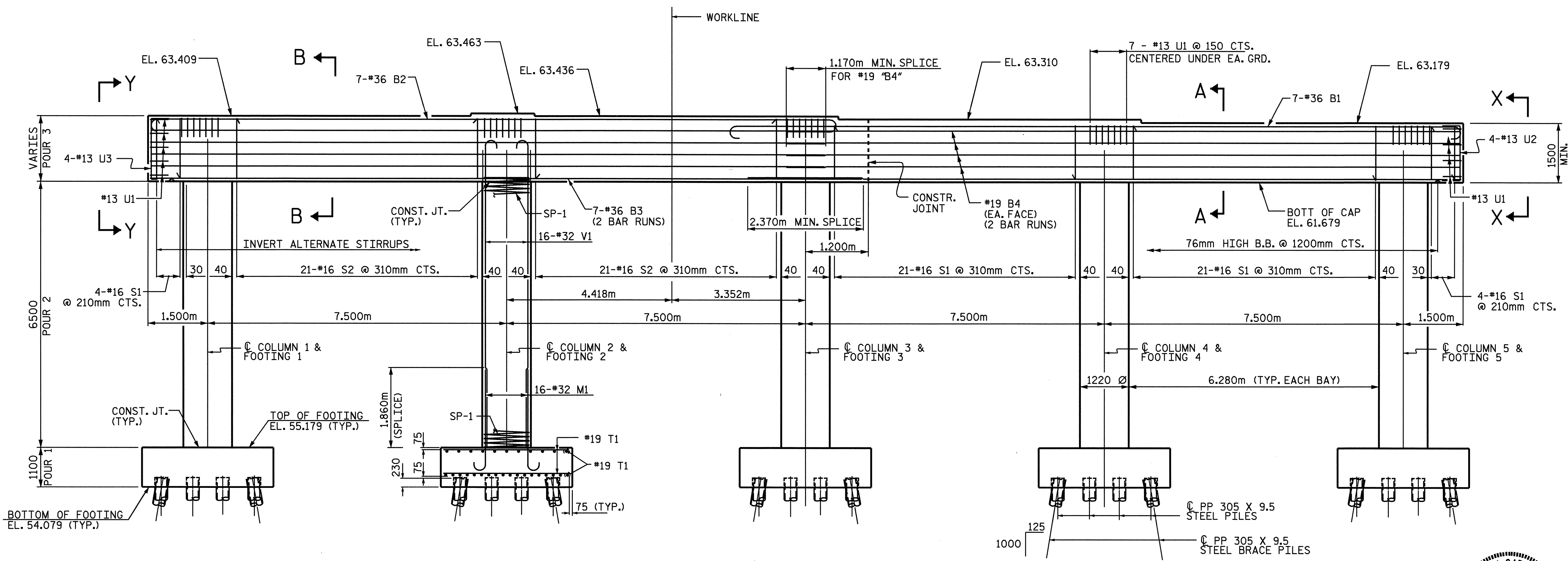
STIRRUPS IN CAP MAY BE SHIFTED AS NECESSARY TO CLEAR ANCHOR BOLTS.
 HOOKS ON "V" BARS MAY BE TURNED AS NECESSARY FOR PLACING REINFORCING STEEL.
 THE CONTRACTOR MAY PROPOSE AN ALTERNATE METHOD FOR PLUGGING THE STEEL PIPE PILE, SUBJECT TO APPROVAL BY THE ENGINEER.



PLAN

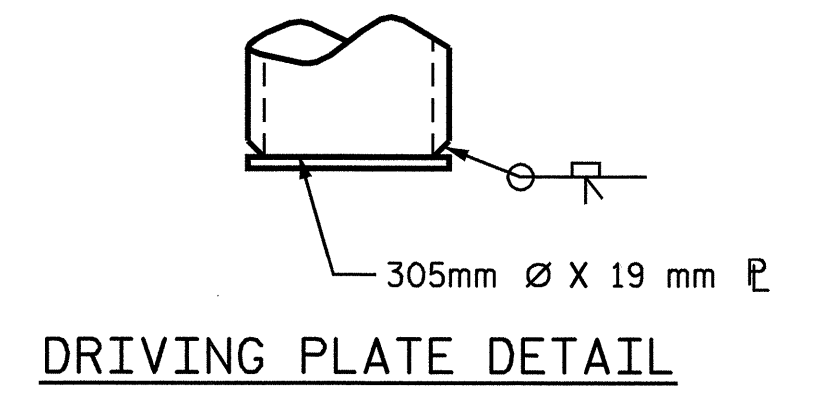


DETAIL "A"

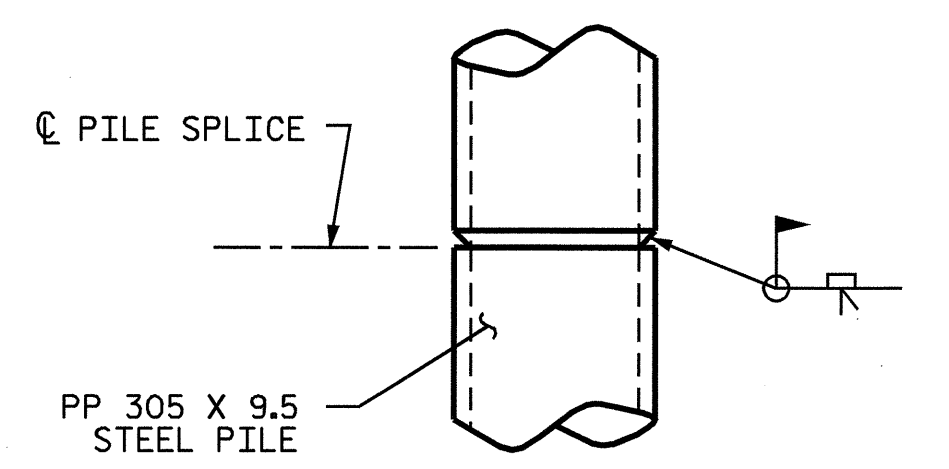


ELEVATION

ALL STIRRUPS ARE INVERTED ALTERNATELY AS SHOWN.
 ALL FOOTING DIMENSIONS AND BARS ARE TYPICAL.



DRIVING PLATE DETAIL



PILE SPLICE DETAILS

PROJECT NO. R-513A
ROBESON COUNTY
 STATION: 18+64.065 -L-

SHEET 1 OF 2

STATE OF NORTH CAROLINA
 DEPARTMENT OF TRANSPORTATION
 RALEIGH

**SUBSTRUCTURE
 BENT 1**



Ting H. Fang
 8/24/04

REVISIONS						SHEET NO.
NO.	BY:	DATE:	NO.	BY:	DATE:	S-26
1			3			TOTAL SHEETS 172
2			4			

DRAWN BY : T. H. FANG DATE : 4/8/03
 CHECKED BY : W. K. FISCHER DATE : 10/2/03