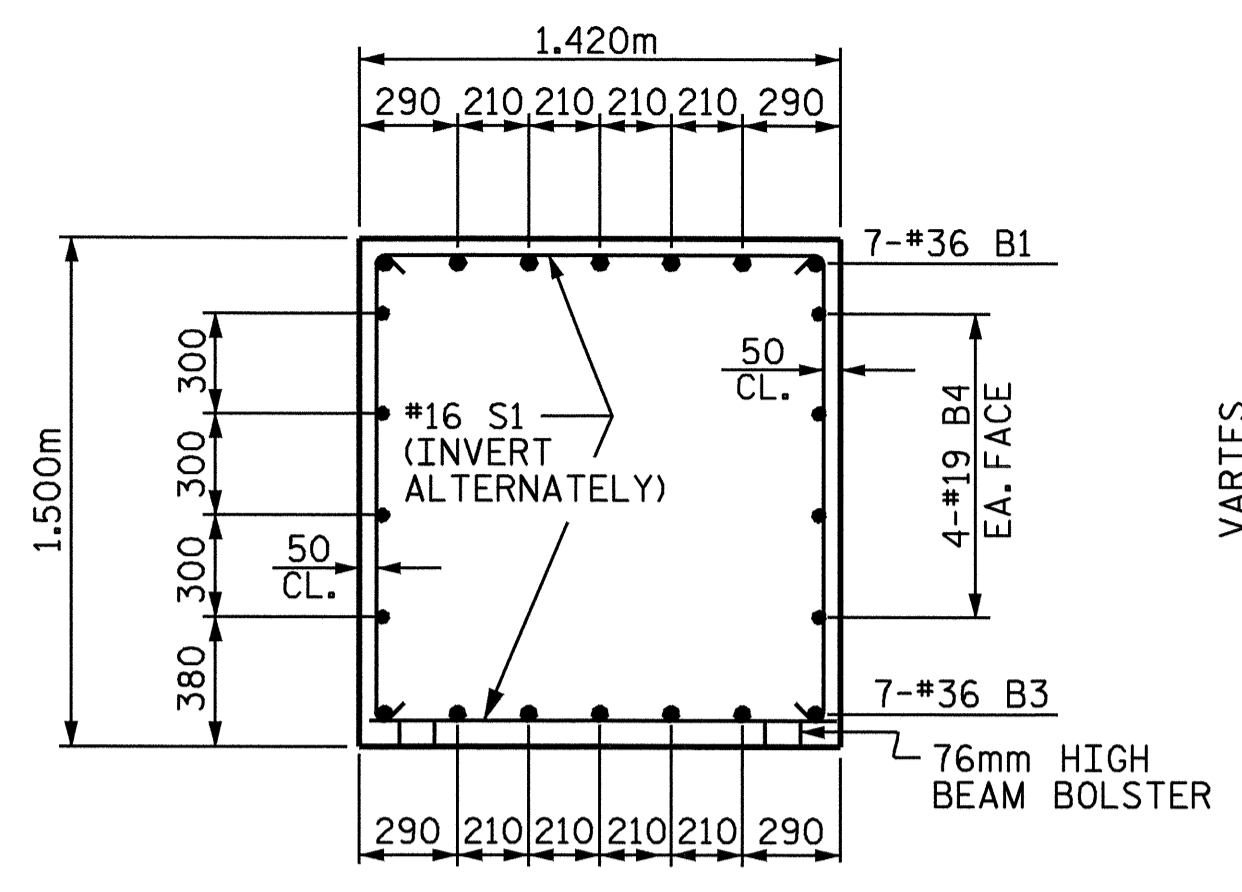
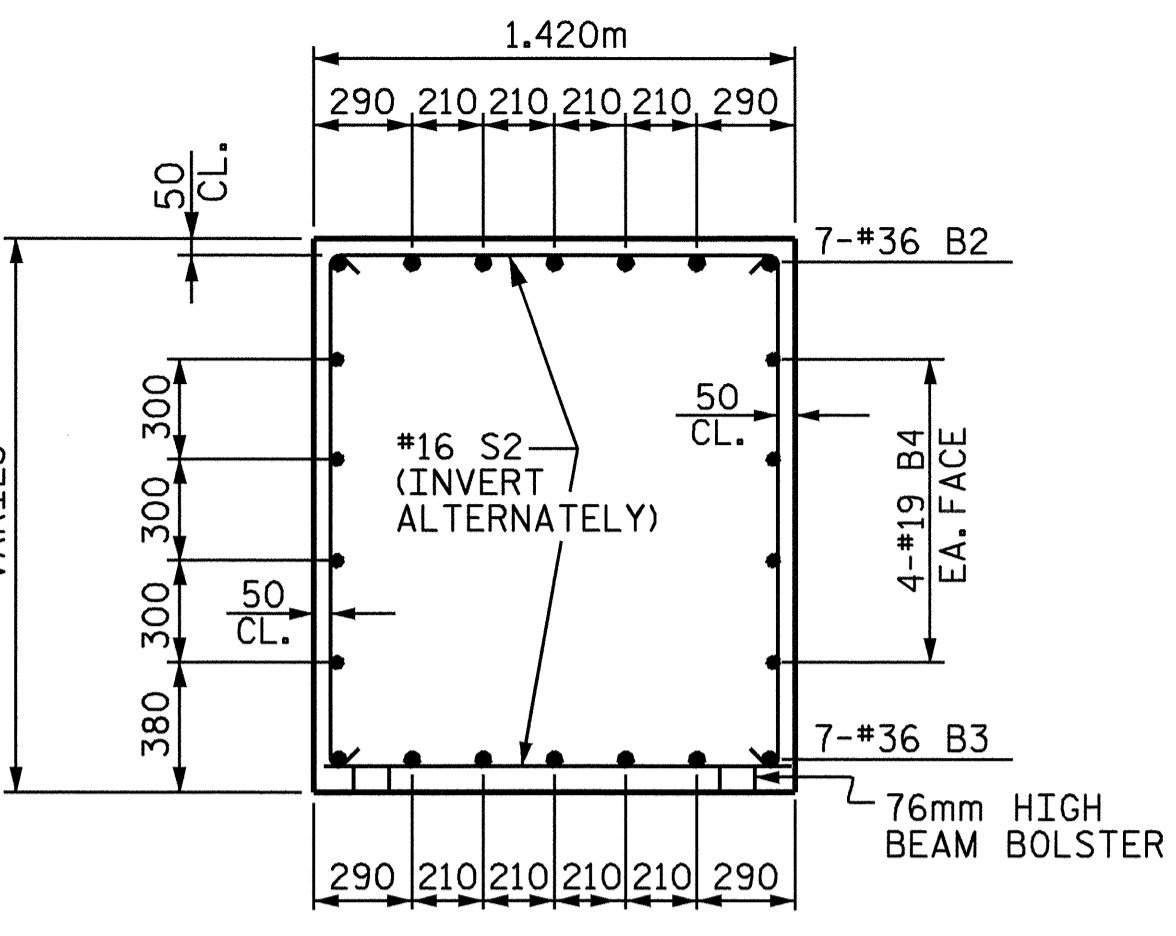


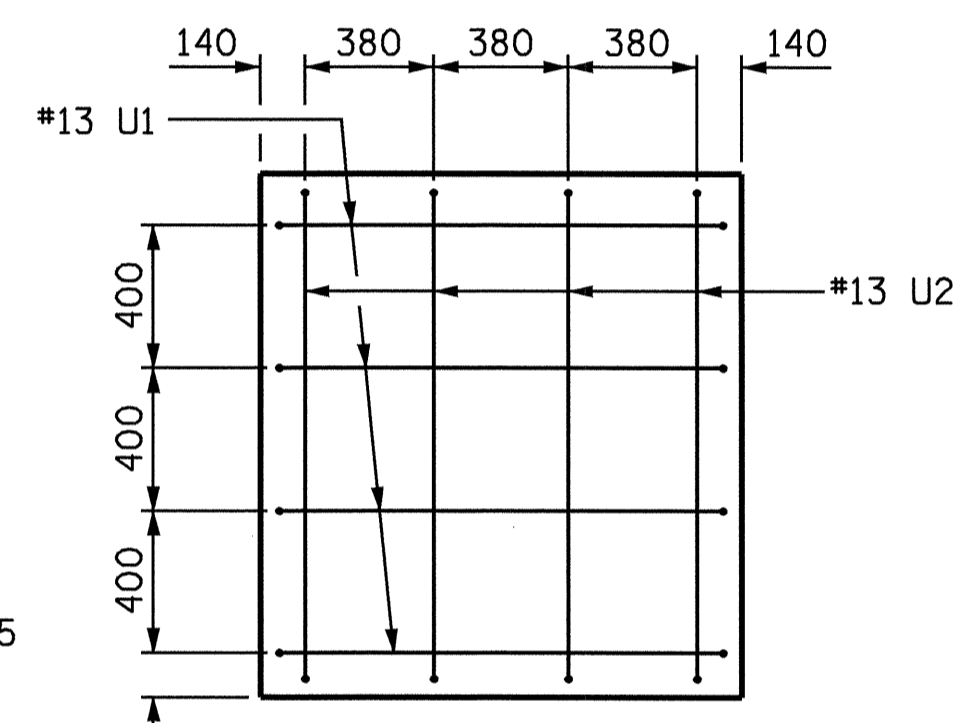
END ELEVATION



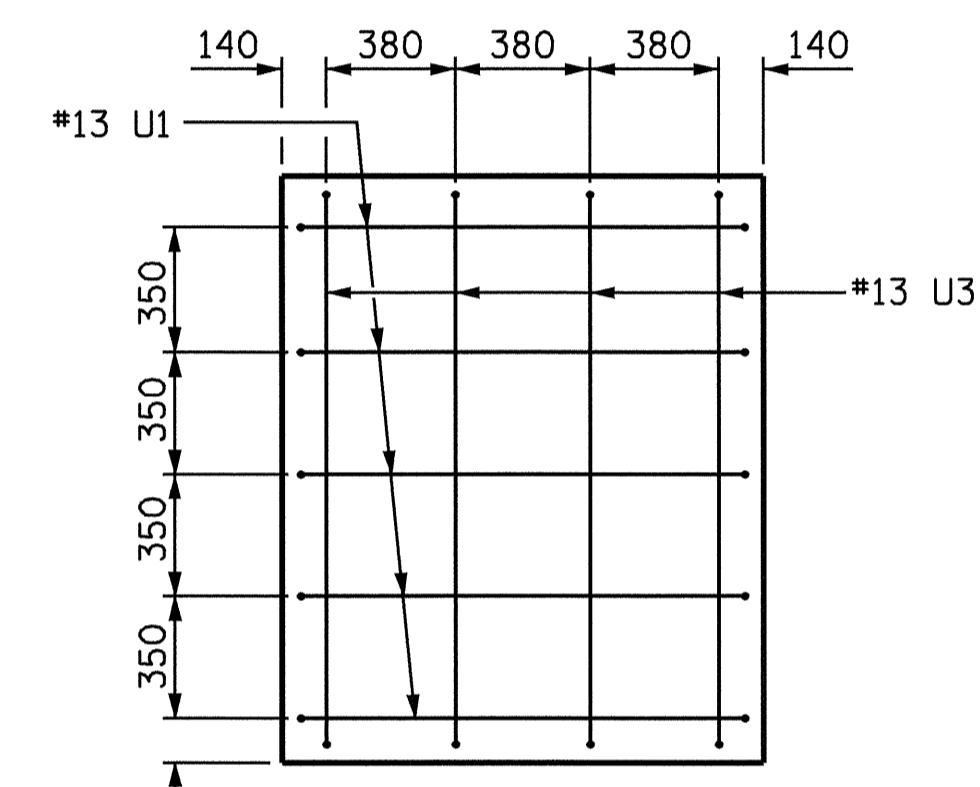
SECTION A-A



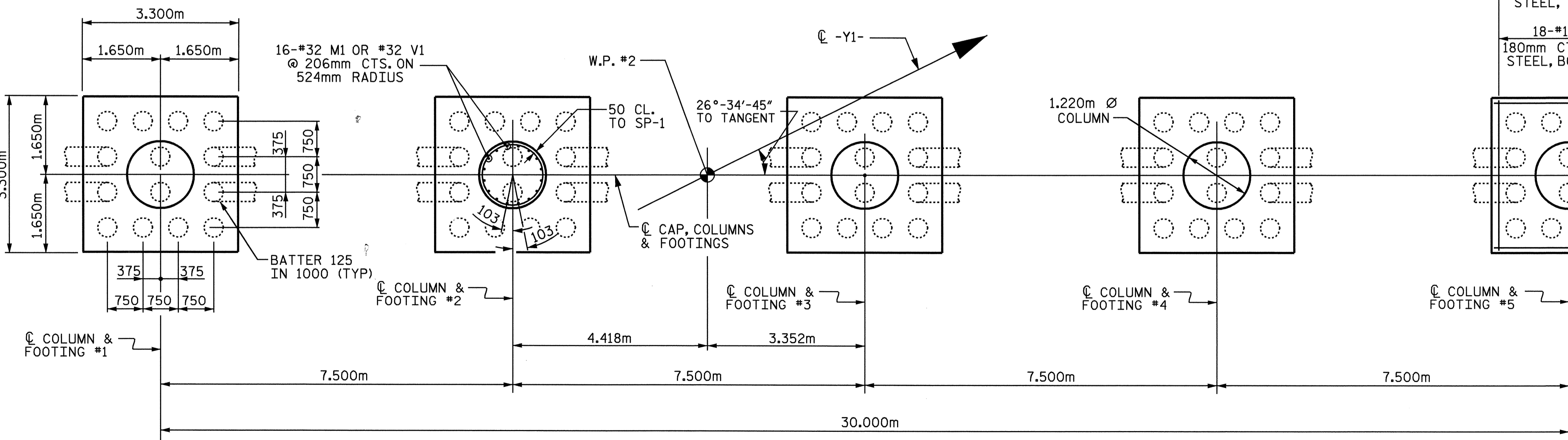
SECTION B-B



VIEW X-X



VIEW Y-Y



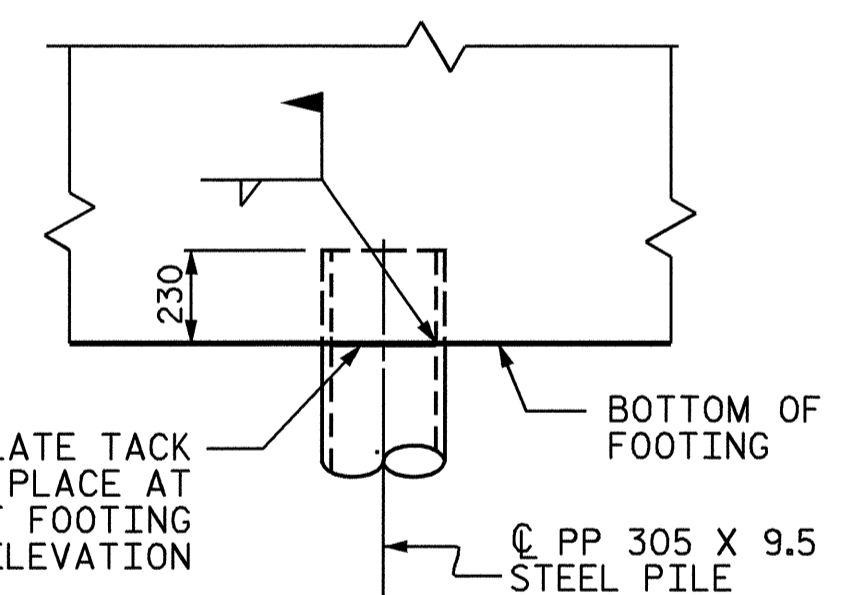
PLAN OF FOOTINGS

DETAILS SHOWN FOR FOOTINGS ARE TYPICAL.

BAR TYPES

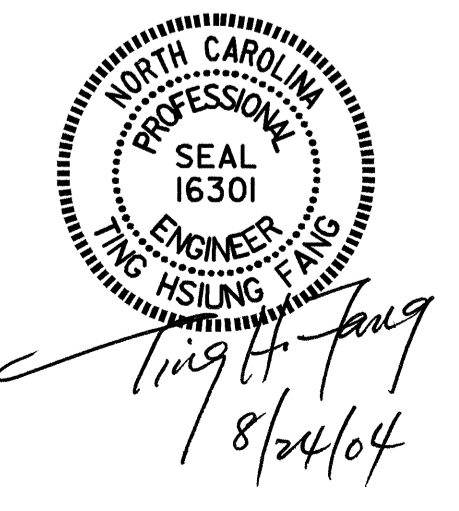
ALL BAR DIMENSIONS ARE OUT TO OUT.
* THE SP-1 SPIRAL REINFORCING STEEL SHALL BE W20 OR D-20 COLD DRAWN WIRE OR #13 PLAIN OR DEFORMED BAR.

BILL OF MATERIAL					
BENT NO. 1					
BAR	NO.	SIZE	TYPE	LENGTH	WEIGHT
B1	7	36	1	18280	1012
B2	7	36	1	18160	1005
B3	14	36	STR	17640	1953
B4	16	19	STR	17040	609
M1	80	32	5	3040	1557
S1	46	16	3	4320	308
S2	46	16	3	4760	340
T1	290	19	STR	3160	2048
U1	44	13	2	2220	97
U2	4	13	2	2300	9
U3	4	13	2	2520	10
V1	80	32	5	7000	3945
SP-1	5	**	4	315000	1566
REINFORCING STEEL				KG	12893
SPIRAL COLUMN REINFORCING STEEL				KG	1566
CLASS "A" CONCRETE BREAKDOWN					
POUR #1 FOOTINGS				59.9	m ³
POUR #2 COLUMNS				38.0	m ³
POUR #3 CAP				77.8	m ³
CLASS "A" CONCRETE TOTAL				175.7	m ³
PP 305 x 9.5 STEEL PILES				NO. 70	METERS 1785



PIPE PILE IN FOOTING DETAIL

PROJECT NO. R-513A
ROBESON COUNTY
 STATION: 18+64.065 -L-
 SHEET 2 OF 2



STATE OF NORTH CAROLINA DEPARTMENT OF TRANSPORTATION RALEIGH					
SUBSTRUCTURE BENT 1					
REVISIONS					
NO.	BY:	DATE:	NO.	BY:	DATE:
1			3		
2			4		

DRAWN BY: T. H. FANG DATE: 4/8/03
 CHECKED BY: K. W. FISCHER DATE: 10/31/03