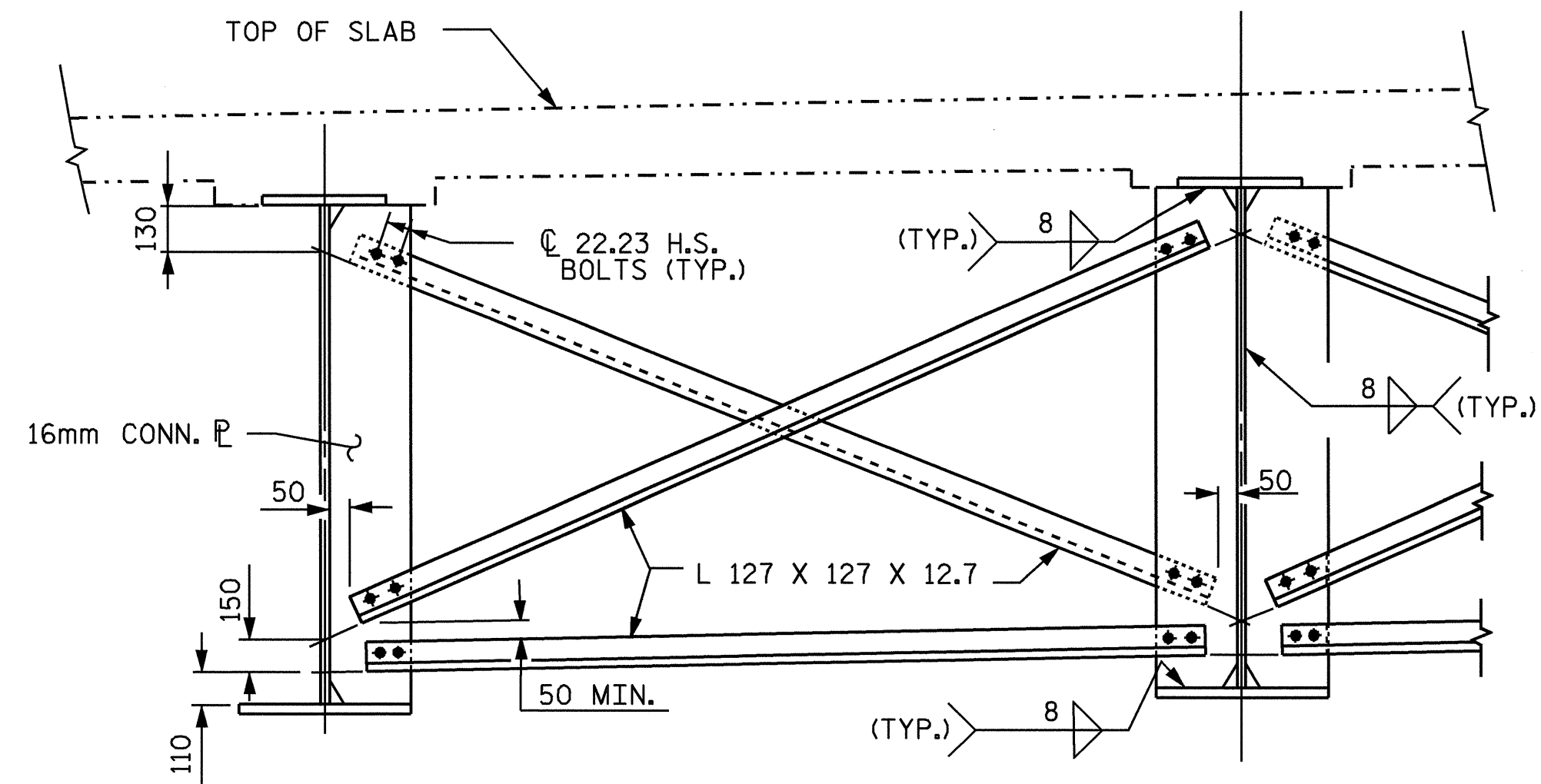
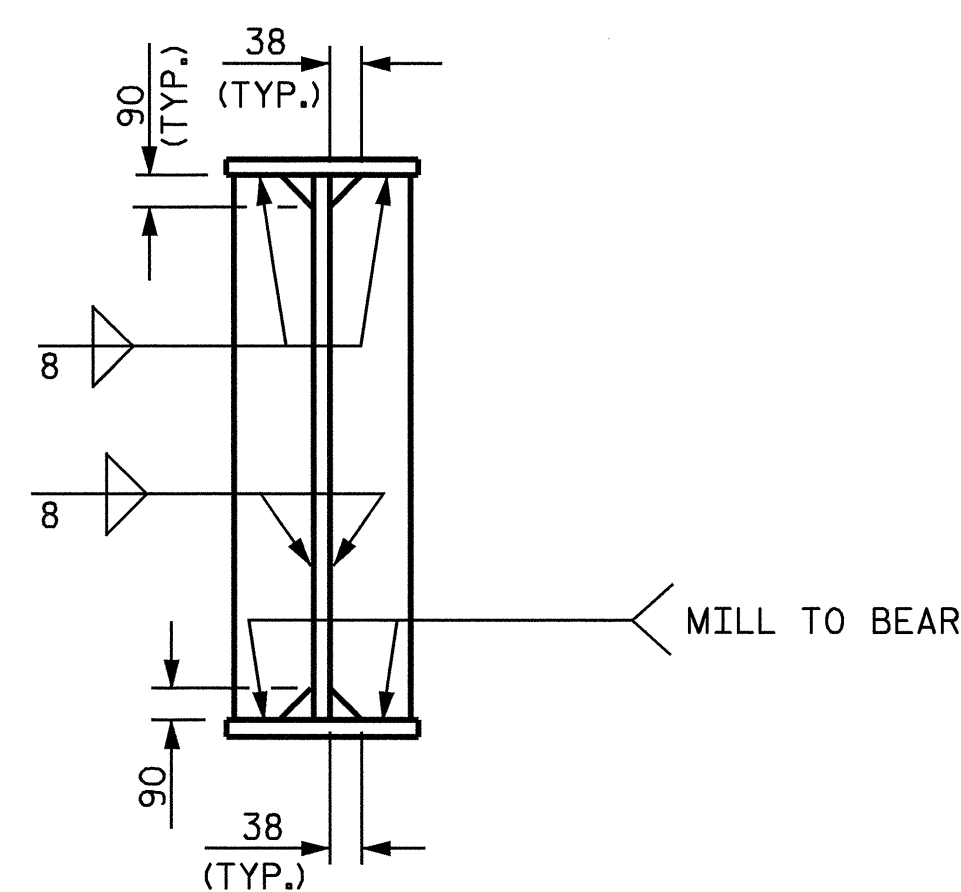


END BENTS 1 & 2 DIAPHRAGM (D1)

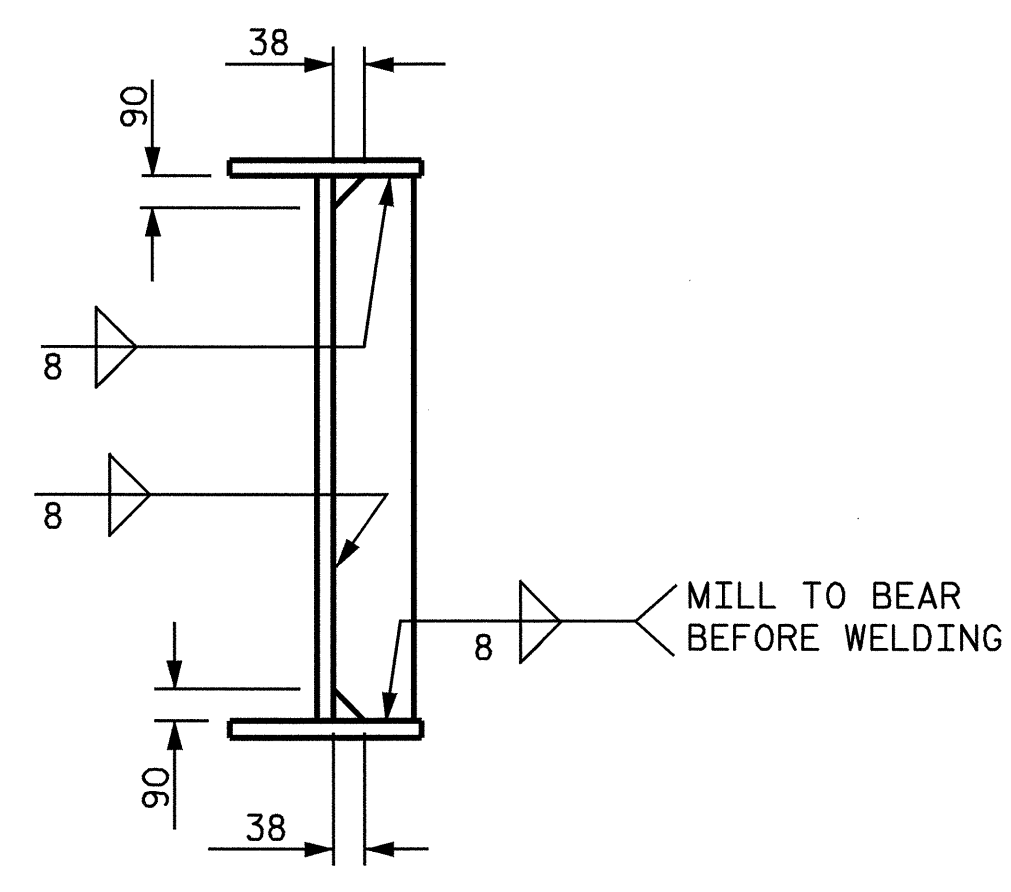


BENT AND INTERMEDIATE DIAPHRAGM (D2)

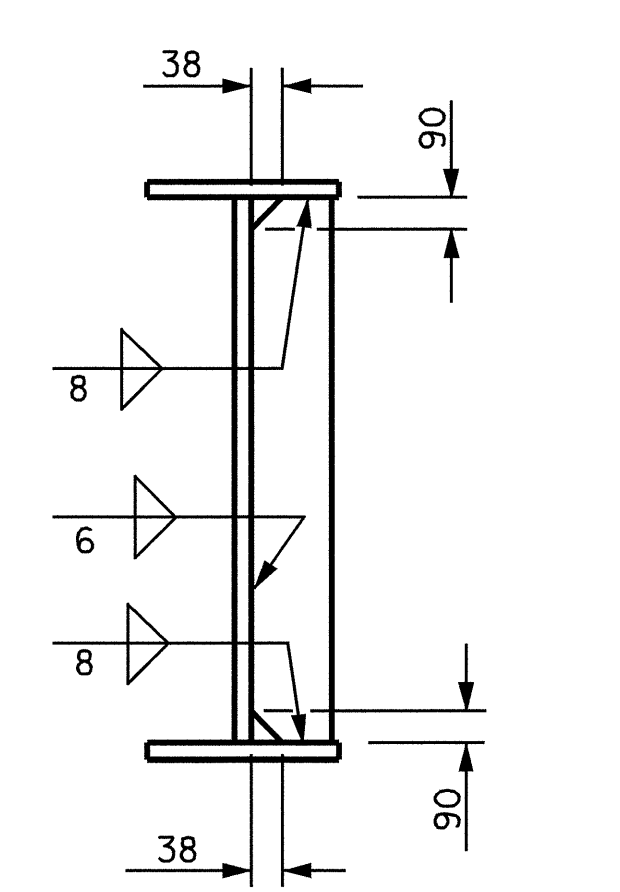


BEARING STIFFENER

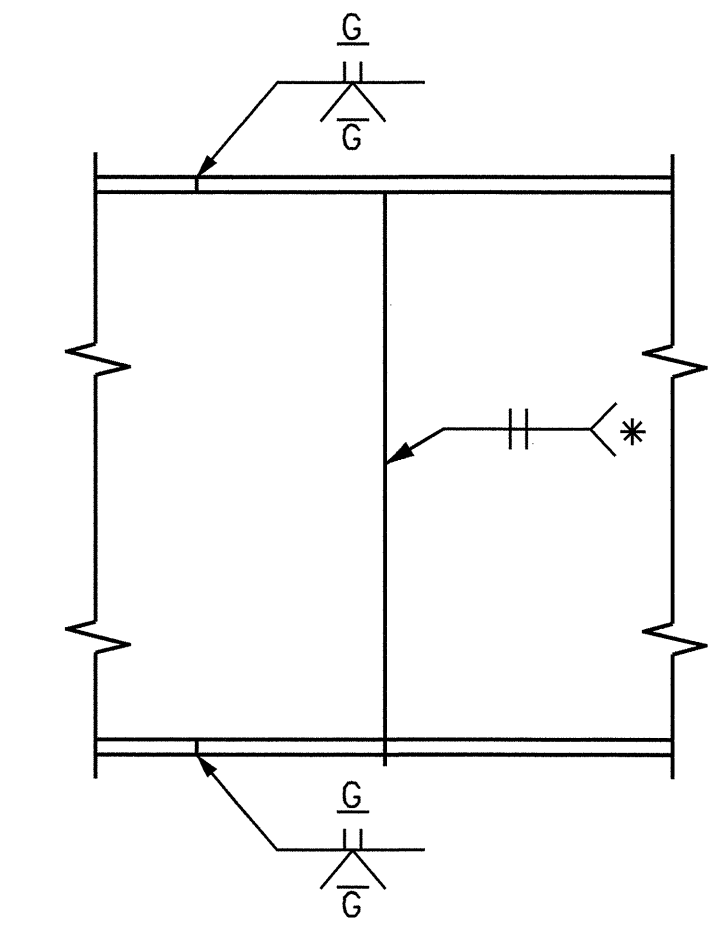
BEARING STIFFENER MAY REQUIRE COPING IF WIDER THAN BOTTOM FLANGE TO AVOID INTERFERENCE WITH THE ANCHOR BOLT.



BEARING STIFFENER / CONNECTOR PLATE

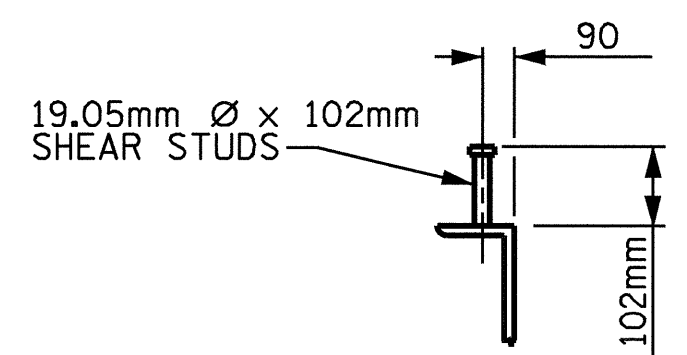


CONNECTOR PLATE

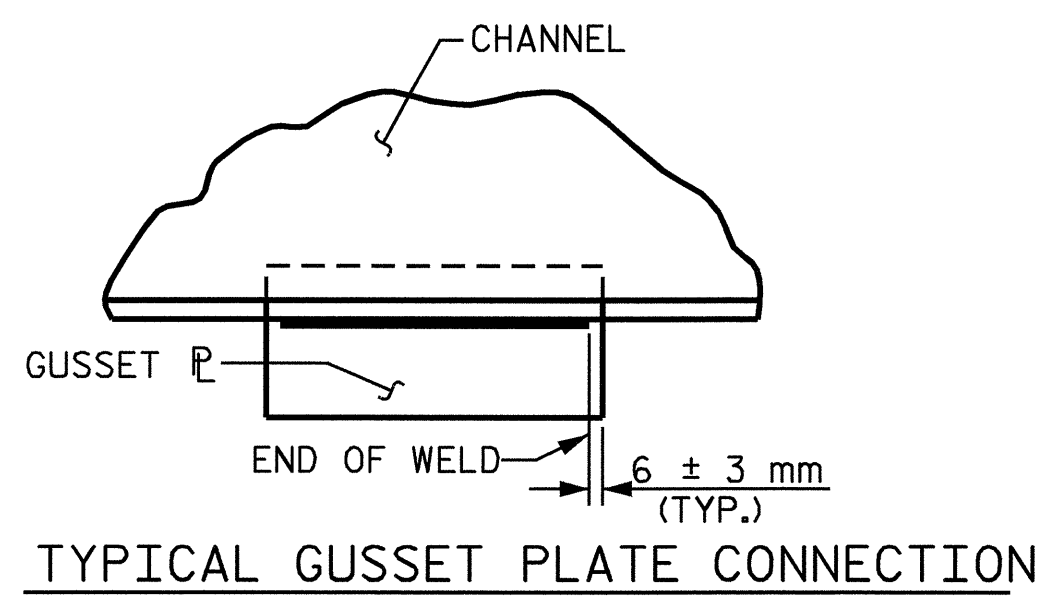


PERMISSIBLE SHOP WEB SPLICE

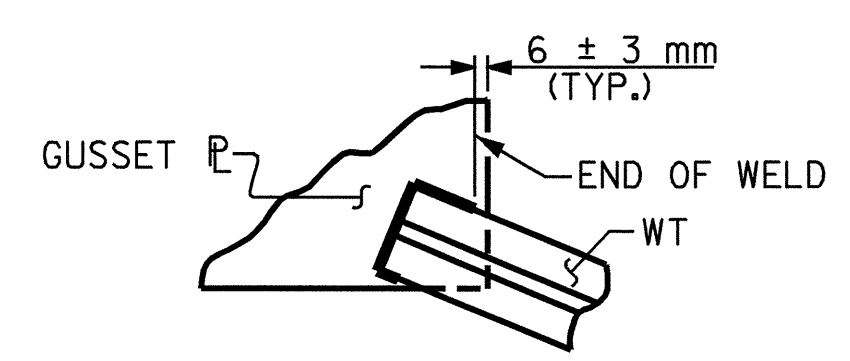
* GRIND SMOOTH AND FLUSH ON OUTSIDE OF EXTERIOR GIRDERS



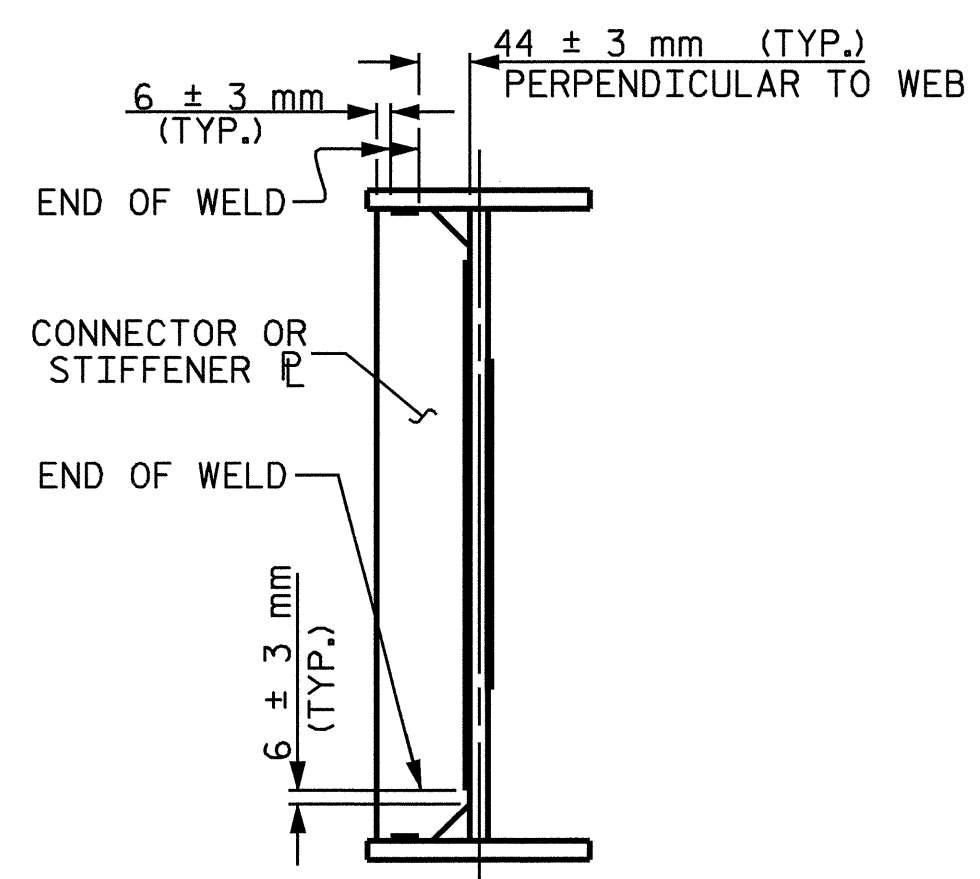
SHEAR STUD DETAIL



TYPICAL GUSSET PLATE CONNECTION



TYPICAL "TEE" TO GUSSET PLATE CONNECTION



TYPICAL STIFFENER OR CONNECTOR PLATE CONNECTIONS

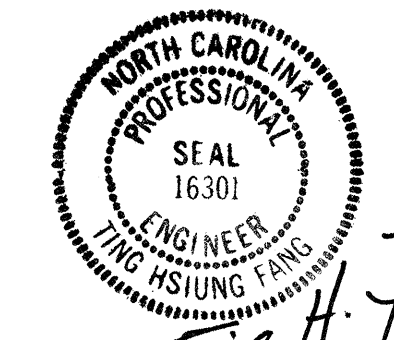
WELD TERMINATION DETAILS

PROJECT NO. R-513A
ROBESON COUNTY
 STATION: 68+75.743 -L-

SHEET 2 OF 3

STATE OF NORTH CAROLINA
 DEPARTMENT OF TRANSPORTATION
 RALEIGH

**SUPERSTRUCTURE
 STRUCTURAL STEEL**



Ting H. Jang
 10/05/04

REVISIONS				SHEET NO.	
NO.	BY:	DATE:	NO.	BY:	DATE:
1			3		
2			4		

TOTAL SHEETS: 172

DRAWN BY : N. Q. TRAN DATE : 10/17/00
 CHECKED BY : T. A. WALTER DATE : 11/30/00