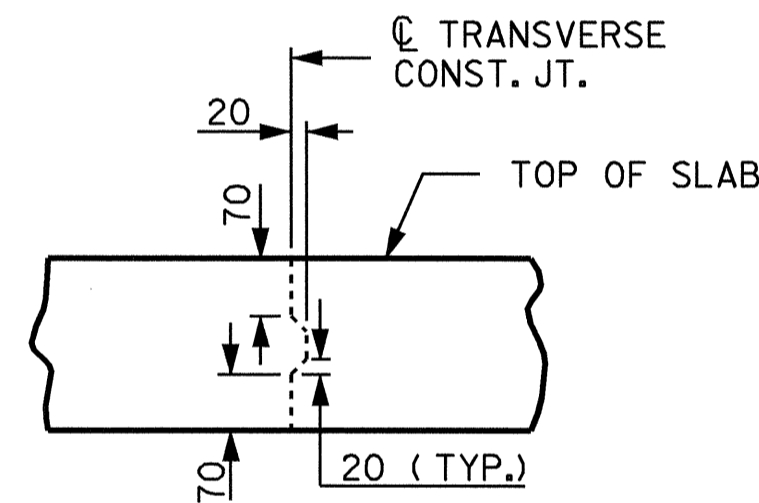


POURING SEQUENCE

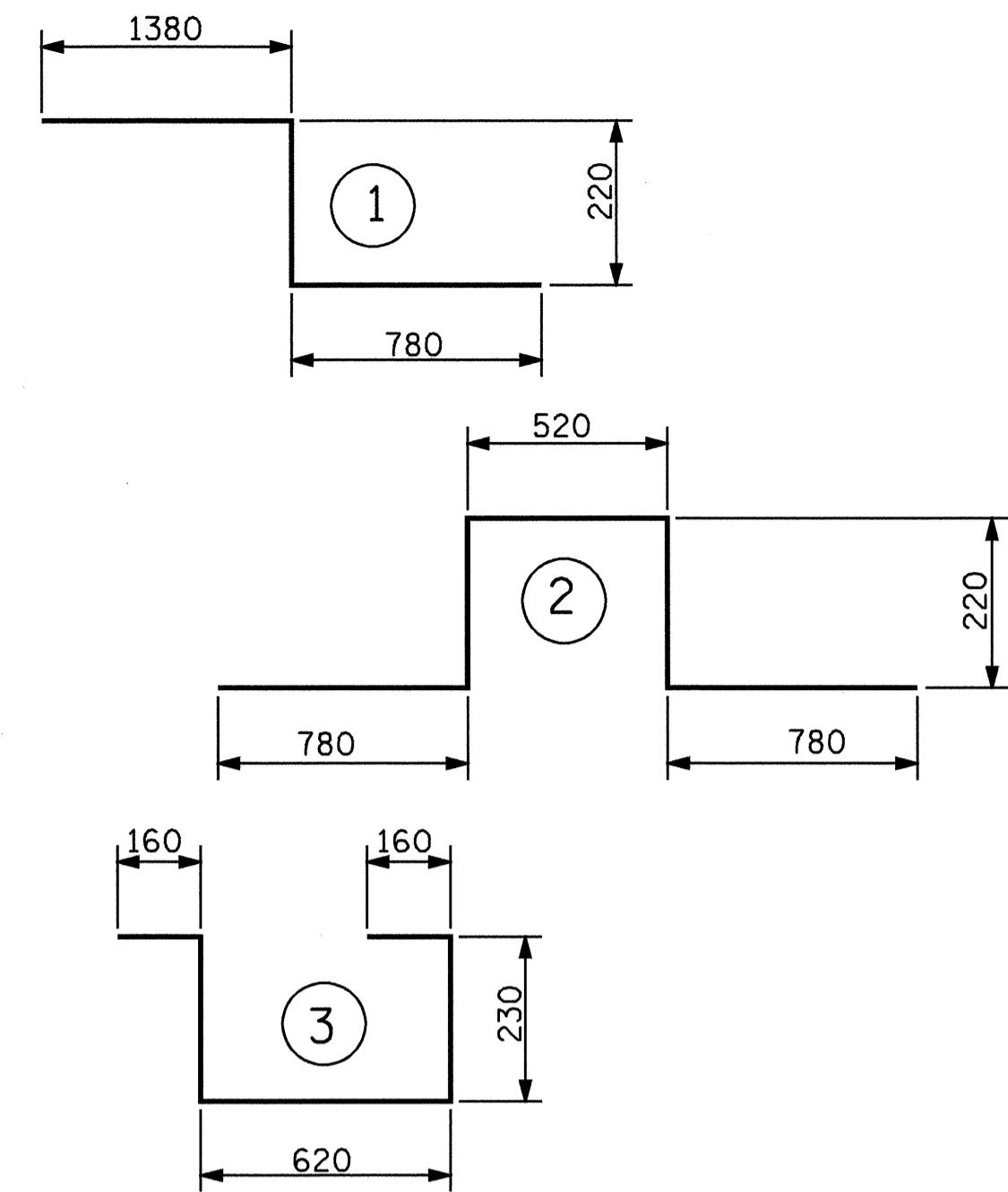
CONCRETE QUANTITY BREAKDOWN	
POUR 1	POUR 2
94.0 CUBIC METERS	234.0 CUBIC METERS



TRANSVERSE CONSTRUCTION JOINT DETAIL

SLAB REINFORCING STEEL SHALL BE CONTINUOUS THRU JOINT

BAR TYPES



ALL BAR DIMENSIONS ARE OUT TO OUT

REINFORCING BAR SCHEDULE

BAR NO.	SIZE	TYPE	LENGTH	WEIGHT	BAR NO.	SIZE	TYPE	LENGTH	WEIGHT
* A1	402	16	STR	16440	A210	6	16	STR	8340
A2	402	16	STR	16440	A211	6	16	STR	7520
* A3	6	19	STR	4560	A212	6	16	STR	6700
* A101	6	16	STR	15660	A213	6	16	STR	5900
* A102	6	16	STR	14840	A214	6	16	STR	5080
* A103	6	16	STR	14020	A215	6	16	STR	4260
* A104	6	16	STR	13220	A216	6	16	STR	3460
* A105	6	16	STR	12400	A217	6	16	STR	2640
* A106	6	16	STR	11580	A218	6	16	STR	1820
* A107	6	16	STR	10780	A219	6	16	STR	1020
* A108	6	16	STR	9960	* B1	148	13	STR	7000
* A109	6	16	STR	9140	* B2	146	22	STR	12300
* A110	6	16	STR	8340	* B3	111	13	STR	9000
* A111	6	16	STR	7520	B4	315	16	STR	15300
* A112	6	16	STR	6700	* G1	4	16	STR	9900
* A113	6	16	STR	5900	* K1	12	16	1	2380
* A114	6	16	STR	5080	* K2	24	16	2	2520
* A115	6	16	STR	4260	K3	30	16	STR	2860
* A116	6	16	STR	3460	* S1	90	13	3	1400
* A117	6	16	STR	2640	REINFORCING STEEL		kg.	19601	
* A118	6	16	STR	1820	* EPOXY COATED REINFORCING STEEL		kg.	19343	
* A119	6	16	STR	1020	* THESE BARS ARE EPOXY COATED				
A201	6	16	STR	15660	REINFORCING STEEL		kg.	19601	
A202	6	16	STR	14840	* EPOXY COATED REINFORCING STEEL		kg.	19343	
A203	6	16	STR	14020	* THESE BARS ARE EPOXY COATED				
A204	6	16	STR	13220	REINFORCING STEEL		kg.	19601	
A205	6	16	STR	12400	* EPOXY COATED REINFORCING STEEL		kg.	19343	
A206	6	16	STR	11580	* THESE BARS ARE EPOXY COATED				
A207	6	16	STR	10780	REINFORCING STEEL		kg.	19601	
A208	6	16	STR	9960	* EPOXY COATED REINFORCING STEEL		kg.	19343	
A209	6	16	STR	9140	* THESE BARS ARE EPOXY COATED				

SUPERSTRUCTURE BILL OF MATERIAL

	CLASS AA CONCRETE (CU.METER)	REINFORCING STEEL (kg)	EPOXY COATED REINFORCING STEEL (kg)
SPAN A-B	328.0	19601	19343
TOTALS**	328.0	19601	19343

** QUANTITIES FOR BARRIER RAIL ARE NOT INCLUDED

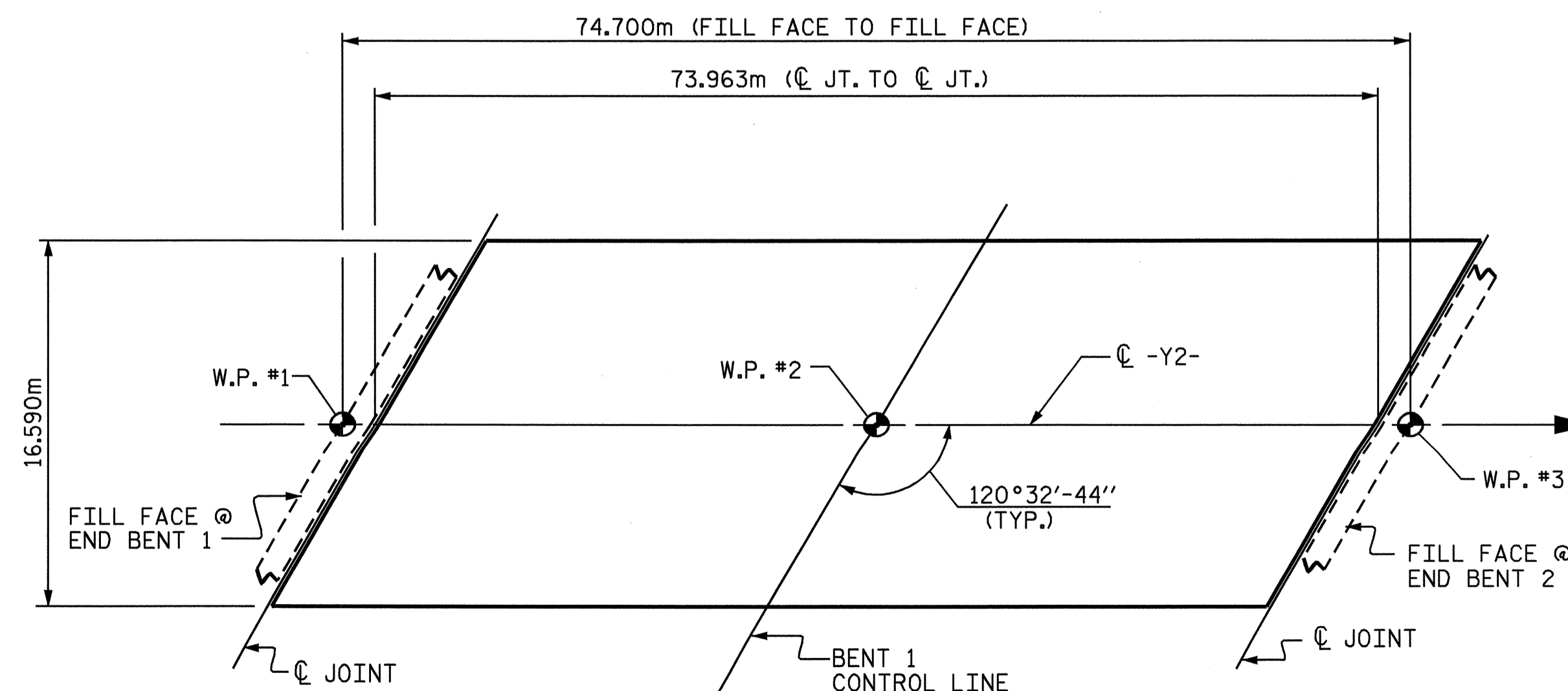
*** QUANTITIES FOR CONCRETE MEDIAN INCLUDED IN SPAN A-B

GROOVING BRIDGE FLOORS

BRIDGE DECK	1084	SQ.METER
APPROACH SLAB	221	SQ.METER
TOTAL	1305	SQ.METER

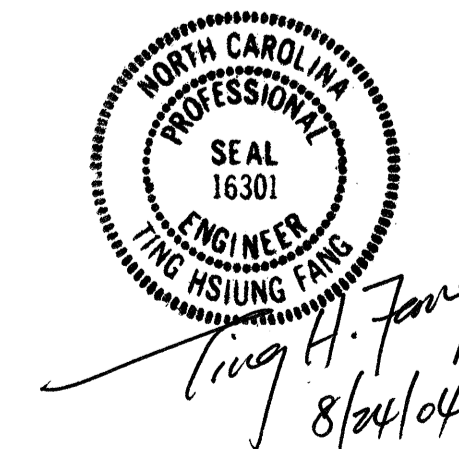
SUPERSTRUCTURE REINFORCING STEEL LENGTHS ARE BASED ON THE FOLLOWING MINIMUM SPLICE LENGTHS

BAR SIZE	SUPERSTRUCTURE EXCEPT APPROACH SLABS, PARAPET, AND BARRIER RAIL		APPROACH SLABS		PARAPET AND BARRIER RAIL
	EPOXY COATED	UNCOATED	EPOXY COATED	UNCOATED	
#13	610	540	610	540	840
#16	770	660	770	660	1050
#19	920	790	1190	790	1330
#22	1580	1060			
#25	2080	1390			



LAYOUT FOR COMPUTING AREA OF REINFORCED CONCRETE DECK SLAB (SQ. METER = 1227.0)

PROJECT NO. R-513A
ROBESON COUNTY
STATION: 68+75.743 -L-



STATE OF NORTH CAROLINA
DEPARTMENT OF TRANSPORTATION
RALEIGH
STANDARD SUPERSTRUCTURE BILL OF MATERIAL

ASSEMBLED BY : N. Q. TRAN DATE : FEB. 2004
CHECKED BY : T. A. WALTER DATE : MAR. 2004
DRAWN BY : JMB 5/87 REV. 5/16/97 EEM/RGW
CHECKED BY : SJD 9/87

REVISIONS						SHEET NO.
NO.	BY:	DATE:	NO.	BY:	DATE:	
1			3			5-54
2			4			TOTAL SHEETS 172