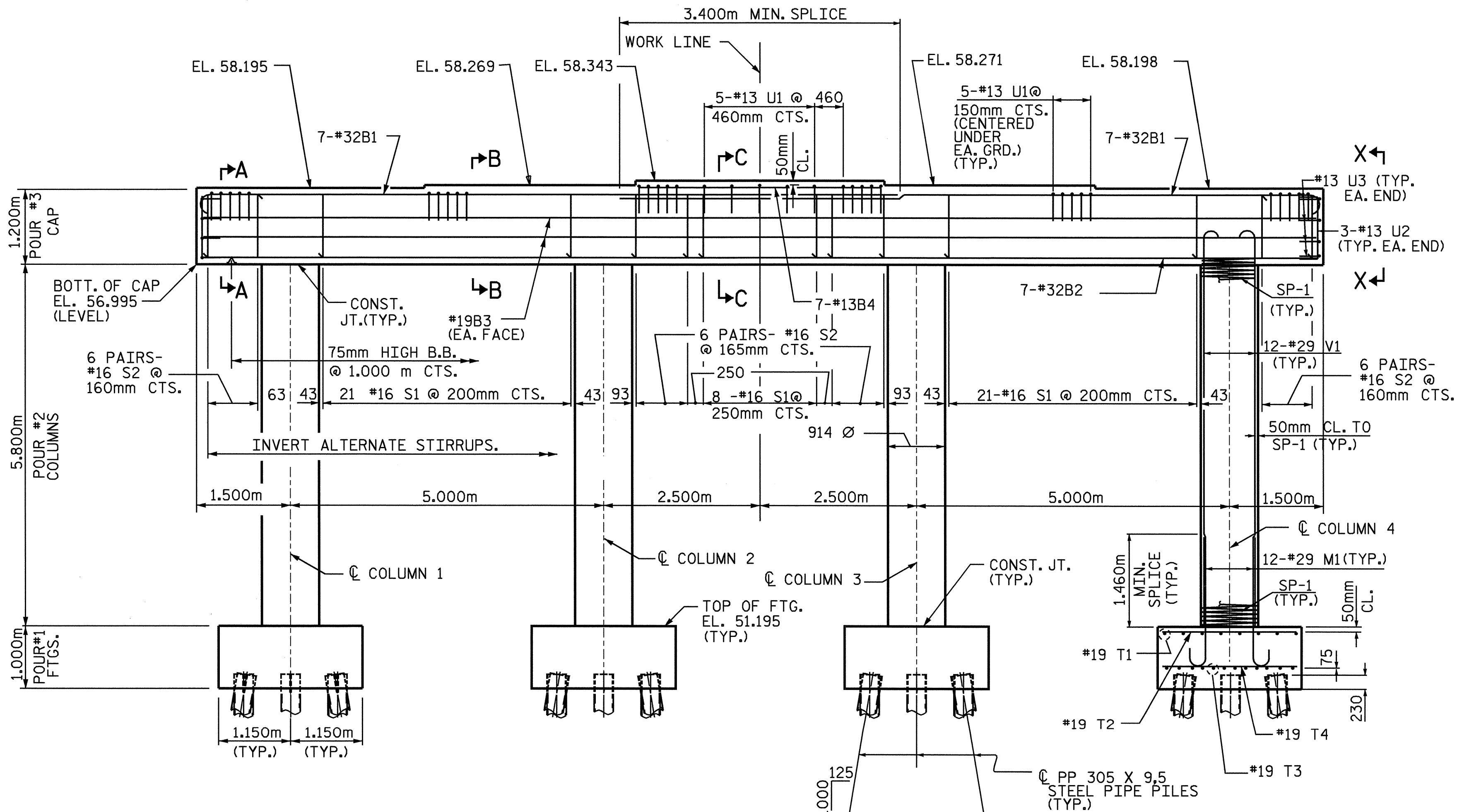
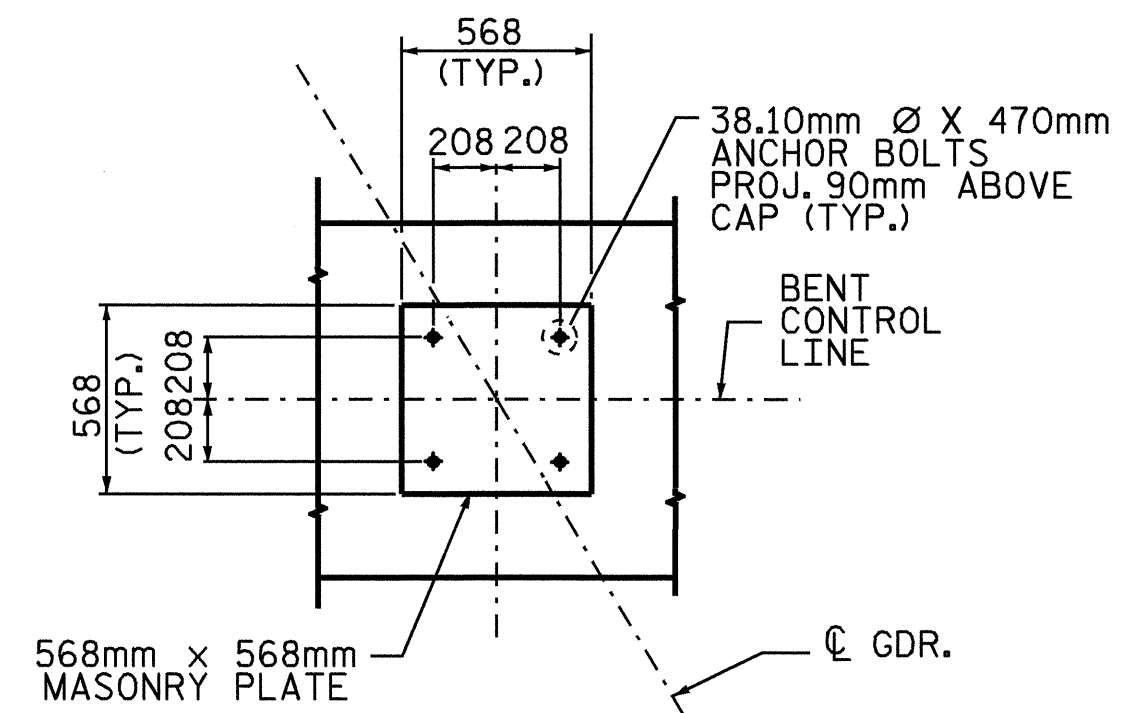


**PLAN**



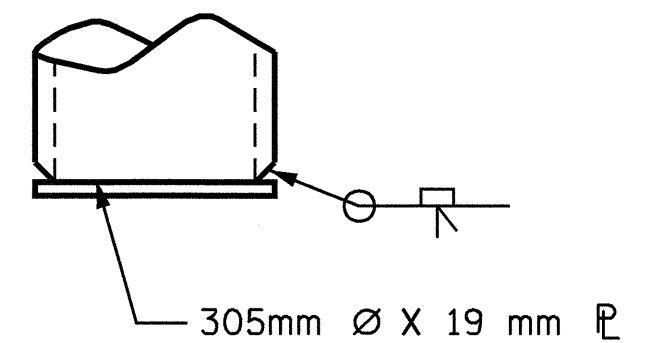
**ELEVATION**

ALL REINFORCING STEEL AND DIMENSIONS ARE TYPICAL FOR ALL COLUMNS AND FOOTINGS.

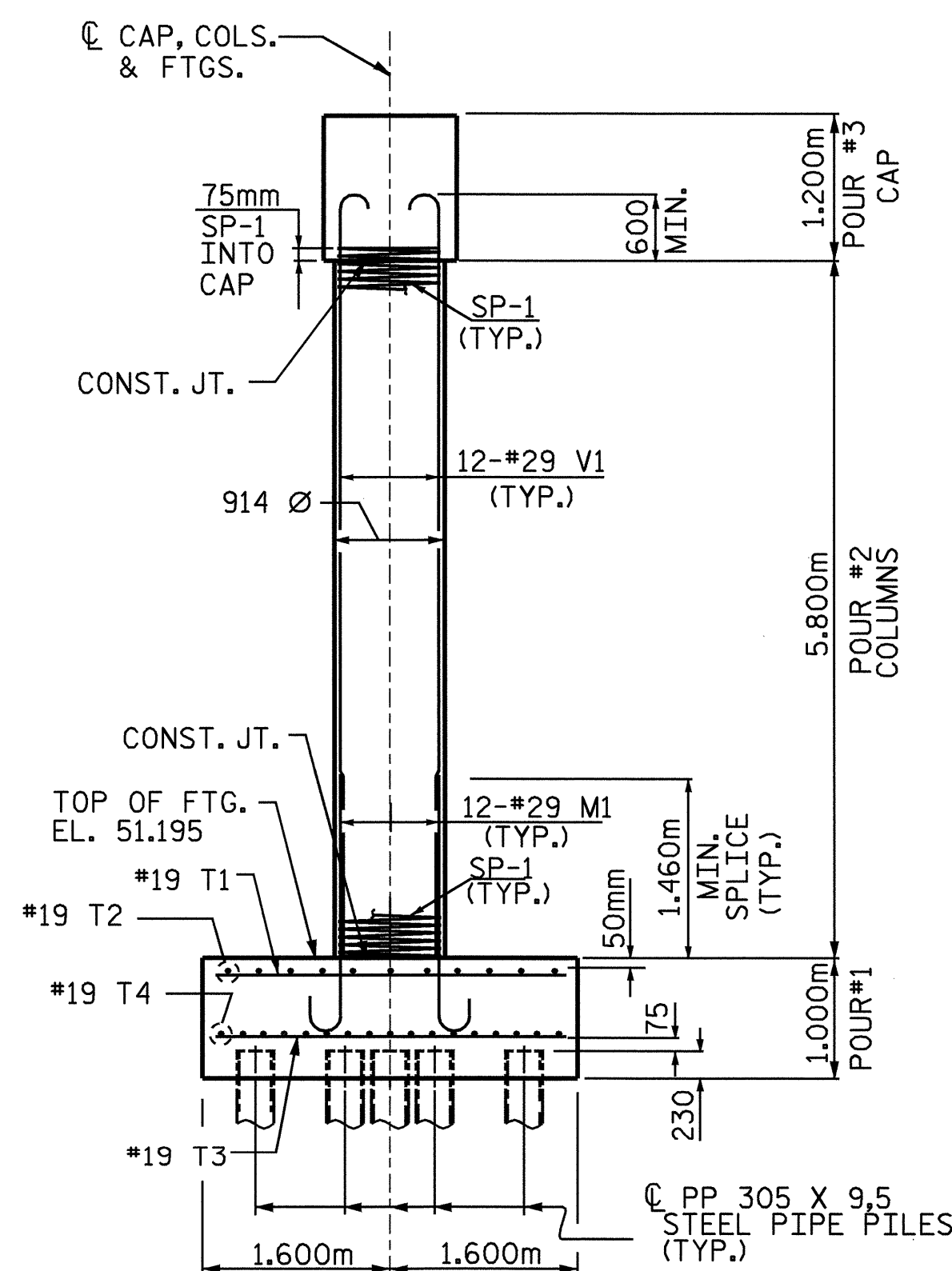


**DETAIL A**

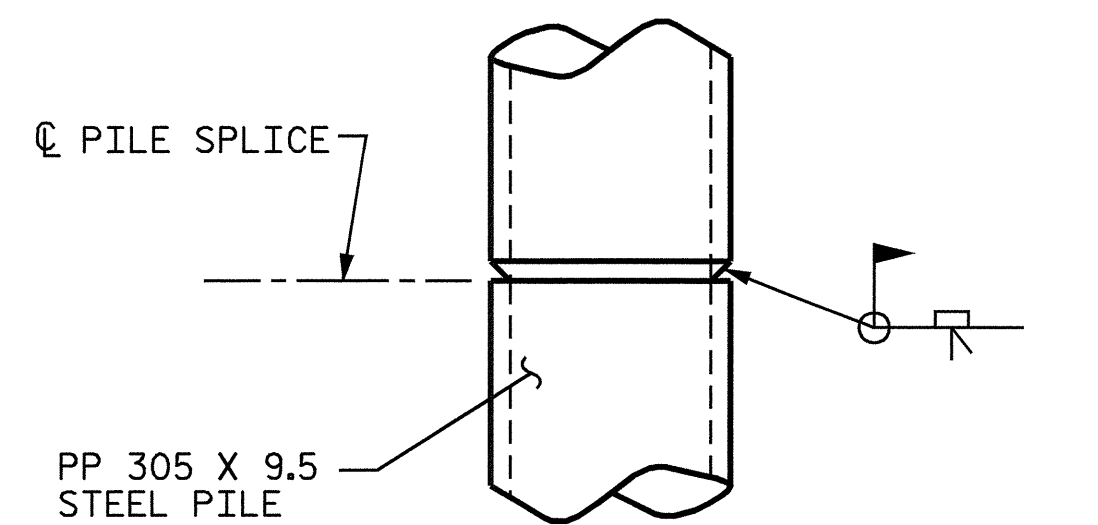
**NOTES**  
 HOOKS ON V1 BARS MAY BE TURNED AS NECESSARY FOR PLACING REINFORCING STEEL.  
 STIRRUPS IN CAP MAY BE SHIFTED AS NECESSARY TO CLEAR ANCHOR BOLTS.  
 THE CONTRACTOR MAY PROPOSE AN ALTERNATE METHOD FOR PLUGGING THE STEEL PIPE PILE, SUBJECT TO APPROVAL BY ENGINEER.



**DRIVING PLATE DETAIL**



**END ELEVATION**



**PILE SPLICE DETAILS**



PROJECT NO. R-513A  
ROBESON COUNTY  
 STATION : 68+75.743 -L-

SHEET 1 OF 2

STATE OF NORTH CAROLINA  
 DEPARTMENT OF TRANSPORTATION  
 RALEIGH

**SUBSTRUCTURE  
 BENT #1**

DRAWN BY : N. Q. TRAN DATE : 5-19-03  
 CHECKED BY : SWANCAPE DATE : 5-9-04

13-AUG-2004 14:30  
 W:\Source\Ncr0513a\str2\Ncr0513a\Drawings\Substructure\Bent#1.dwg

REVISIONS						SHEET NO.
NO.	BY:	DATE:	NO.	BY:	DATE:	S-58
1			3			TOTAL SHEETS
2			4			172