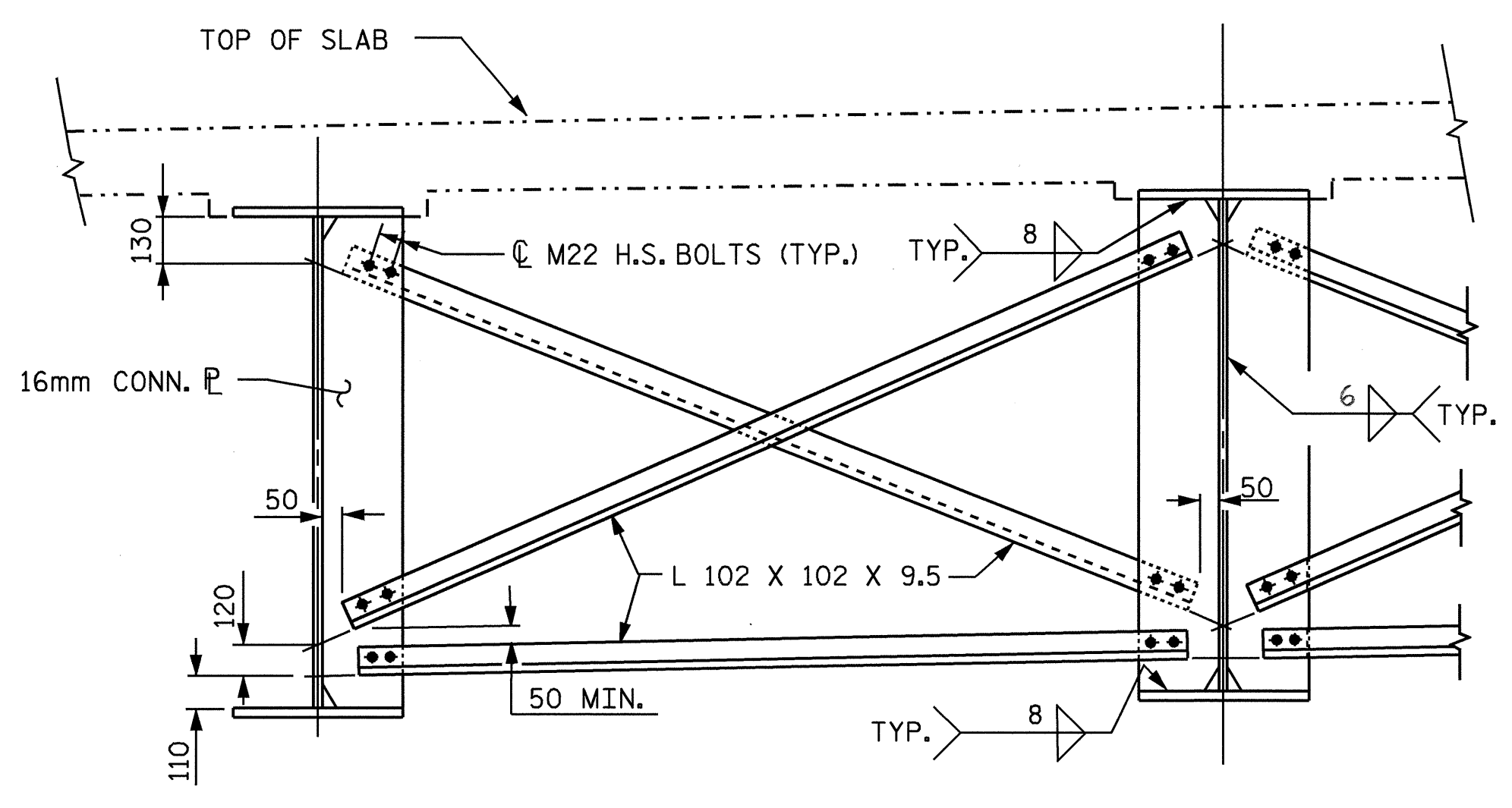
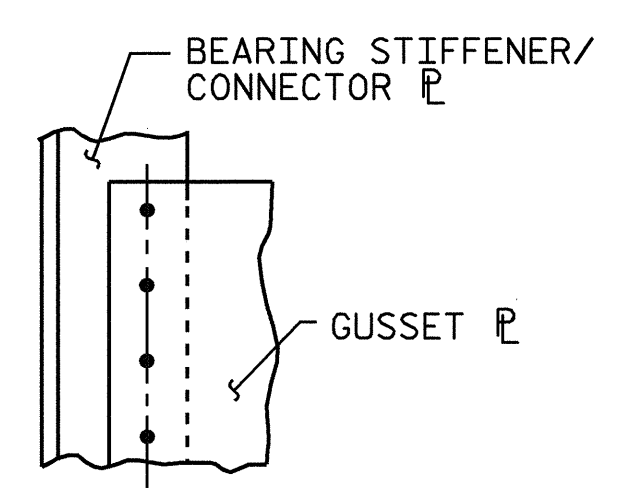
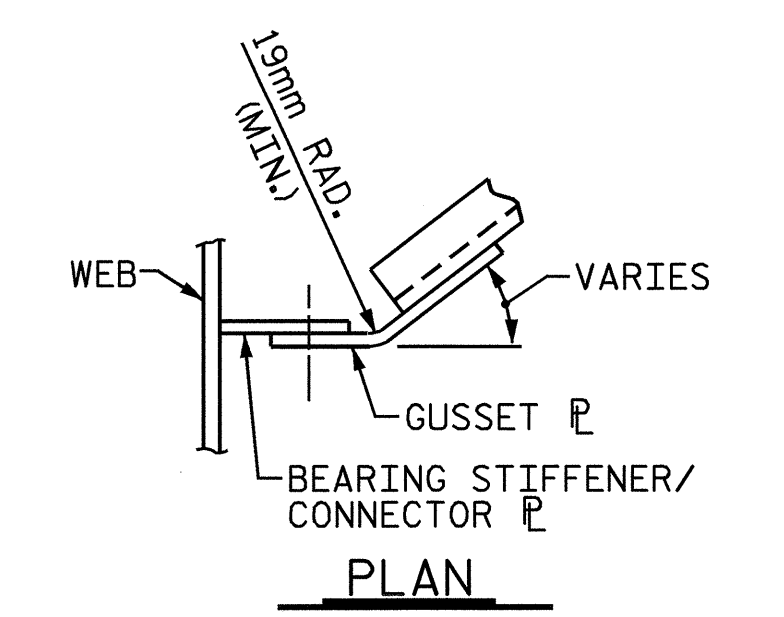


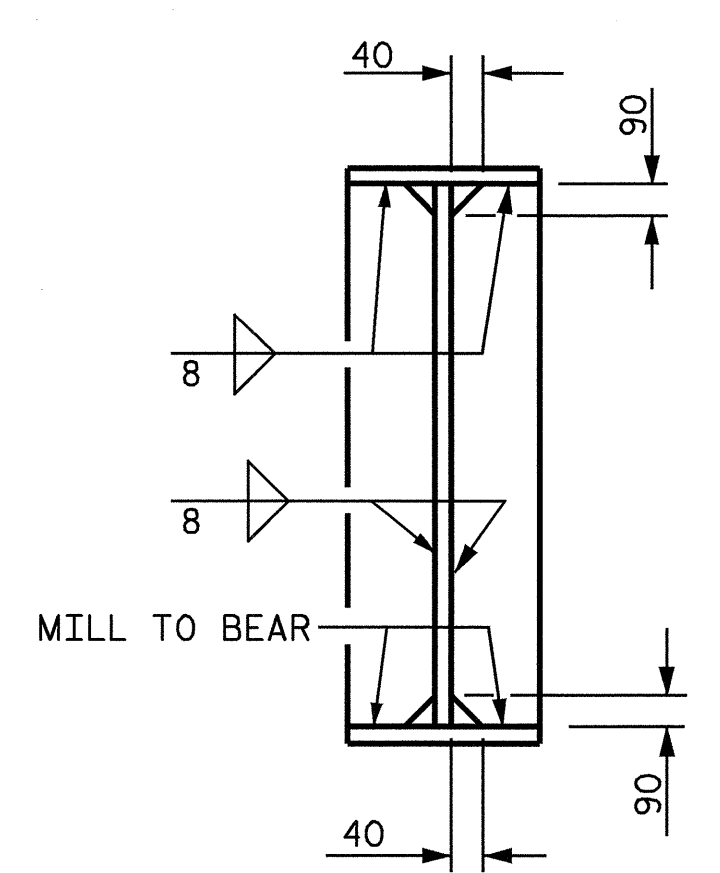
**END BENTS 1 & 2 DIAPHRAGM (D1)**



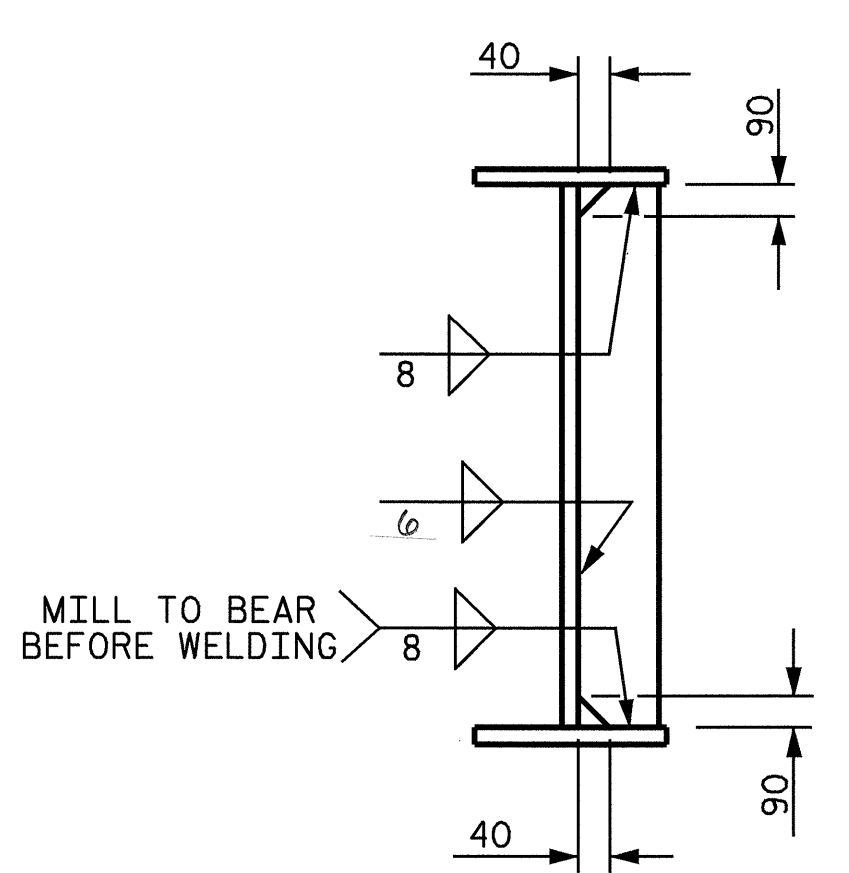
**INTERMEDIATE DIAPHRAGM (D2)**



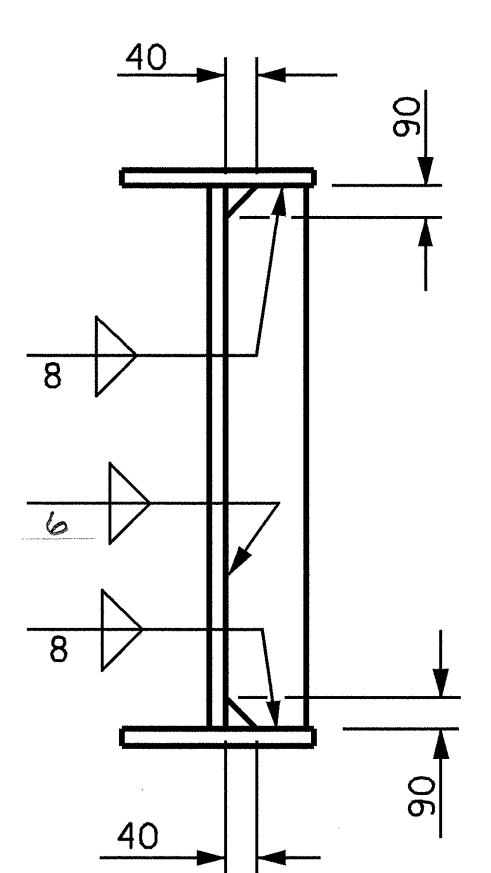
**GUSSET P DETAILS**



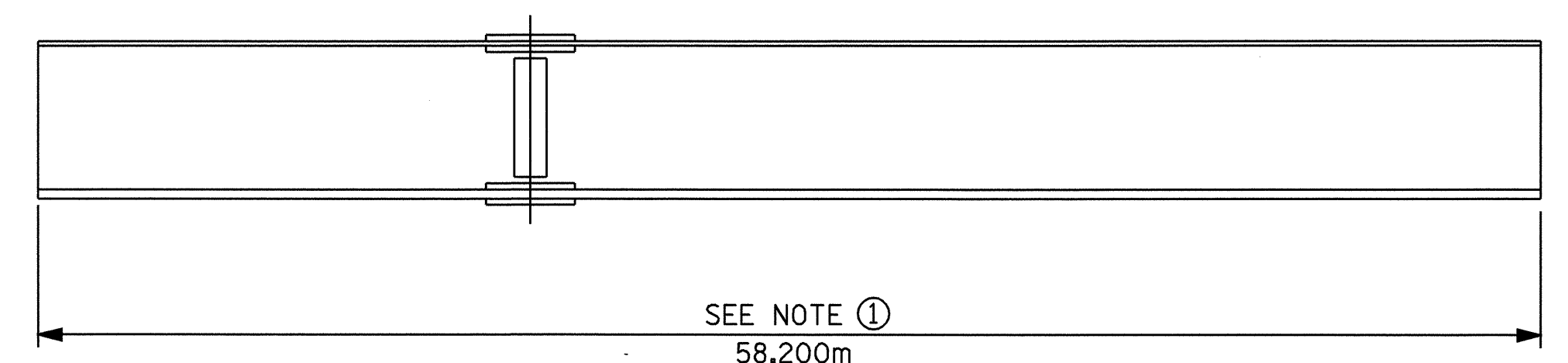
**BEARING STIFFENER**



**BEARING STIFFENER / CONNECTOR PLATE**



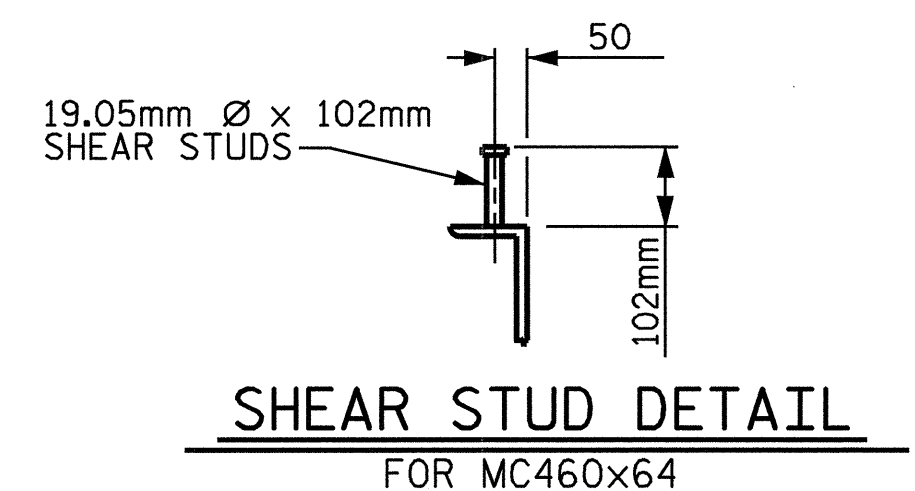
**CONNECTOR PLATE**



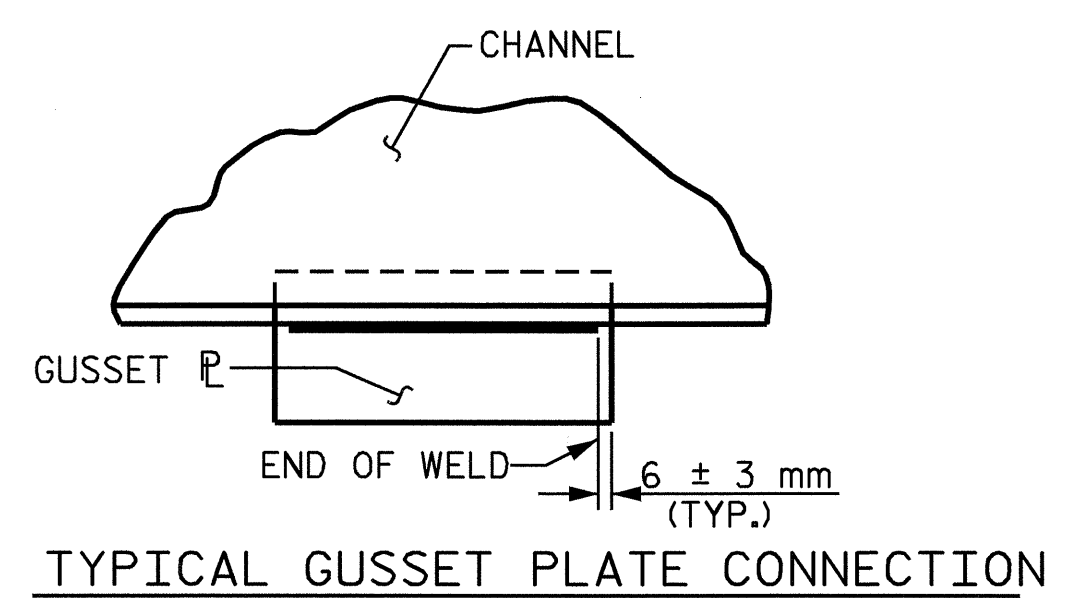
**GIRDER MAKE UP**

NOTE ① : CHARPY V-NOTCH TESTS ARE REQUIRED FOR ALL TOP OR BOTTOM FLANGE PLATES WHICH FALL WITHIN THESE LIMITS, ALL WEB PLATES, AND ALL SPLICE PLATES. IF A PERMITTED SHOP FLANGE SPLICE IS NOT USED, CHARPY V-NOTCH TESTS WILL BE REQUIRED FOR THE ENTIRE FLANGE PLATE. FOR CHARPY V-NOTCH TESTS, SEE ARTICLE 1072-9 OF THE STANDARD SPECIFICATIONS.

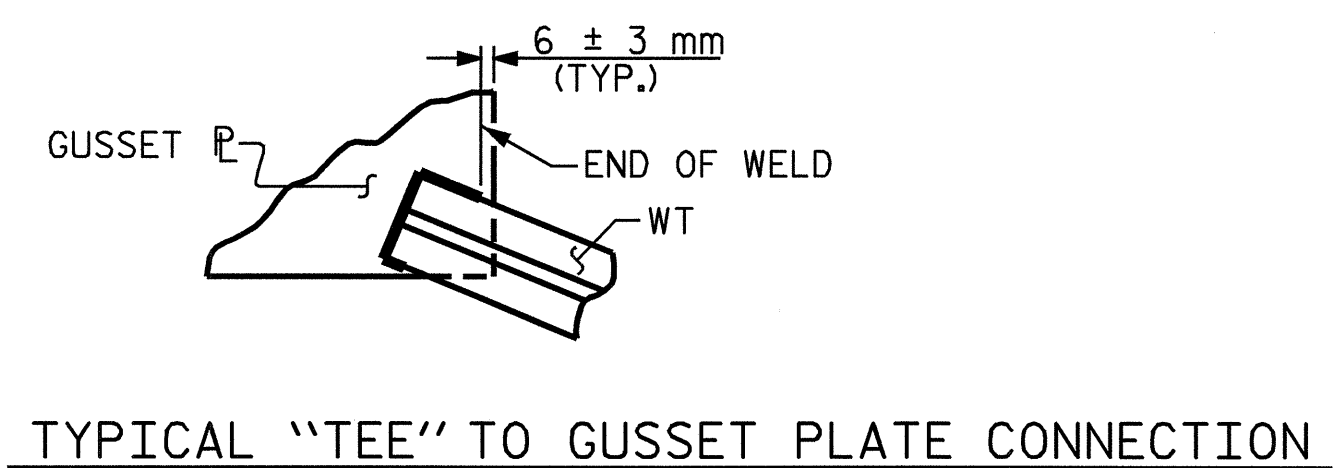
**CHARPY V-NOTCH TESTS FOR PLATE GIRDERS**



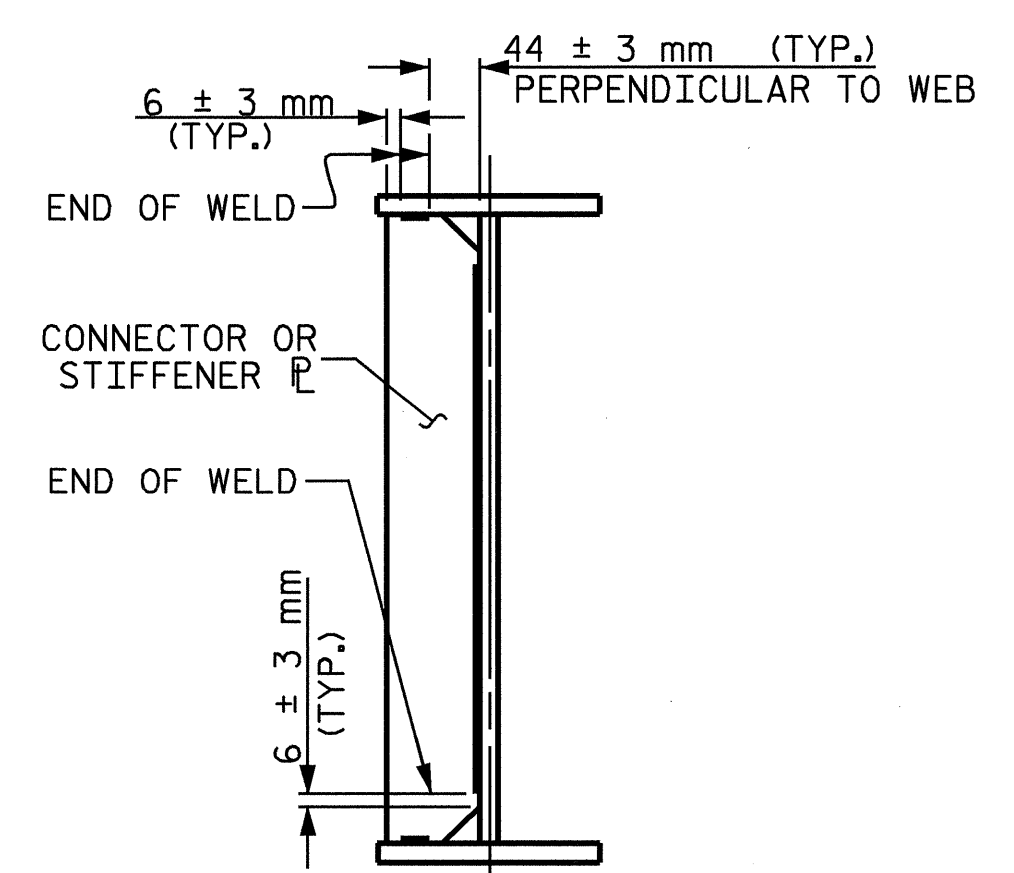
**SHEAR STUD DETAIL FOR MC460x64**



**TYPICAL GUSSET PLATE CONNECTION**



**TYPICAL "TEE" TO GUSSET PLATE CONNECTION**

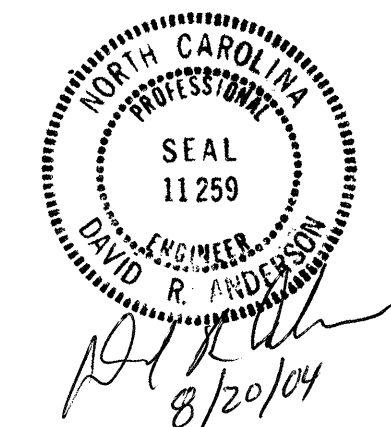


**TYPICAL STIFFENER OR CONNECTOR PLATE CONNECTIONS**

**WELD TERMINATION DETAILS**

PROJECT NO. R-513BA  
ROBESON COUNTY  
 STATION: 113+73.429 -L-

SHEET 2 OF 3



STATE OF NORTH CAROLINA DEPARTMENT OF TRANSPORTATION RALEIGH					
SUPERSTRUCTURE STRUCTURAL STEEL (LEFT LANE)					
REVISIONS					
NO.	BY:	DATE:	NO.	BY:	DATE:
1			3		
2			4		
					SHEET NO. 3-76 TOTAL SHEETS 172

DRAWN BY: T.A. WALTER DATE: 9/19/02  
 CHECKED BY: B. BARODAWALA DATE: 4/11/03