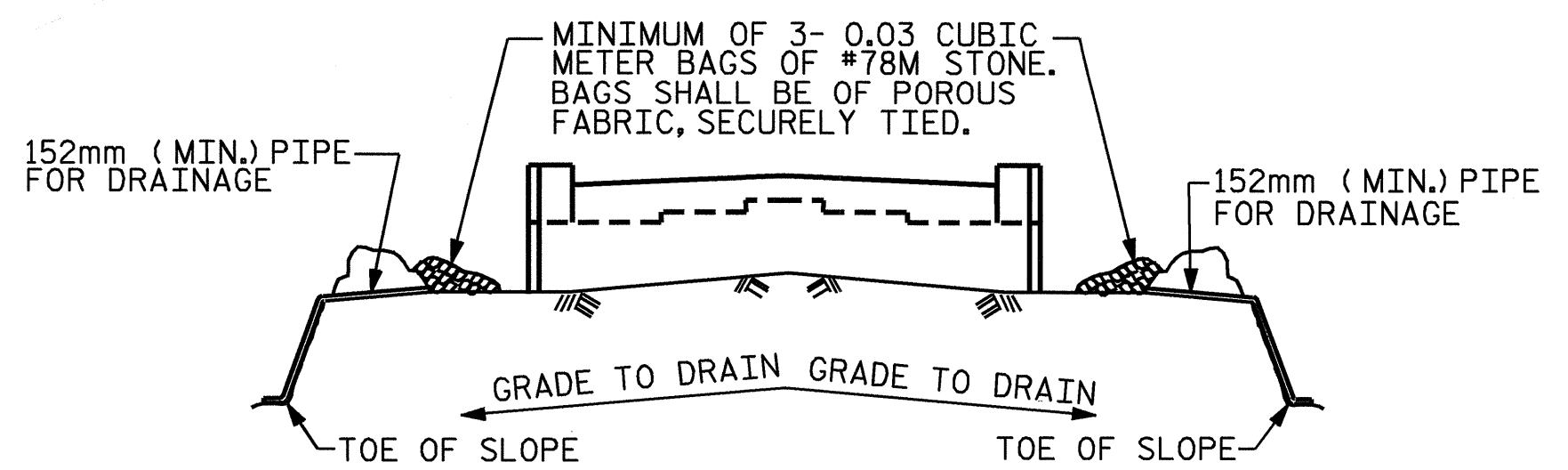
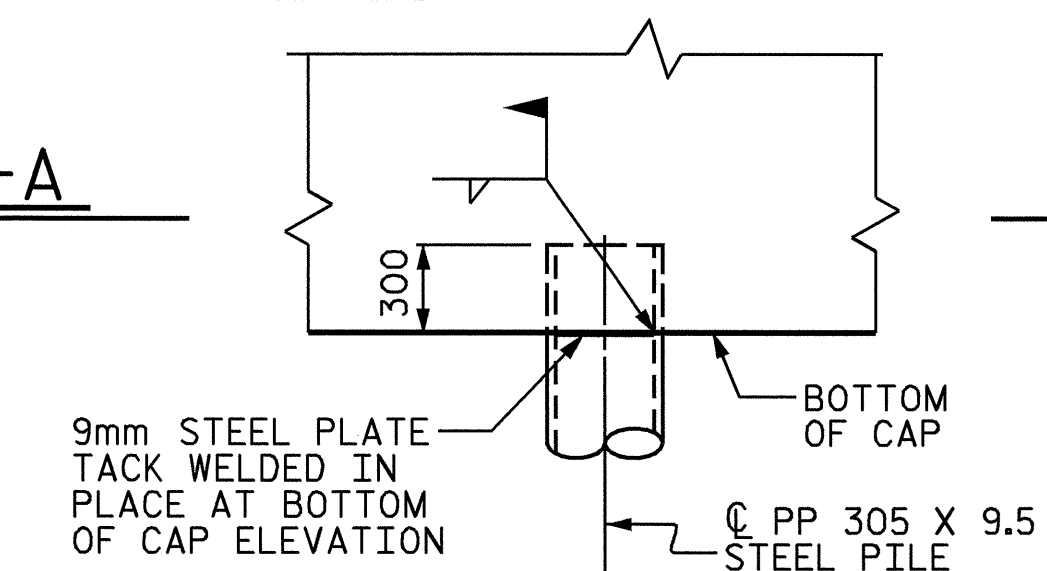


SECTION A-A

SECTION B-B

PIPE PILE IN END BENT CAP DETAIL

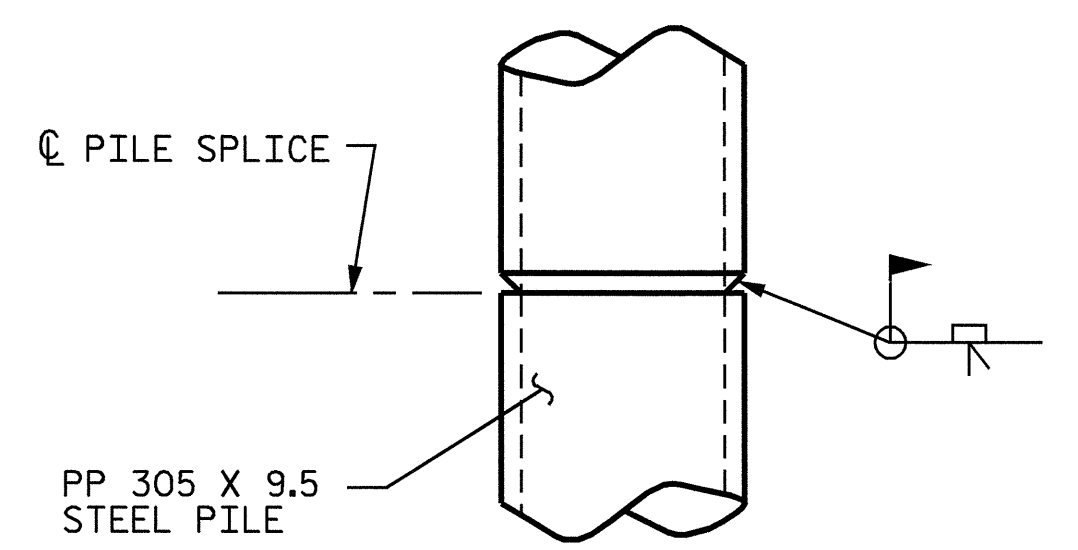


BAGGED STONE AND PIPE SHALL BE PLACED IMMEDIATELY AFTER COMPLETION OF END BENT EXCAVATION. PIPE MAY BE EITHER CONCRETE, CORRUGATED STEEL, CORRUGATED ALUMINUM ALLOY, OR CORRUGATED PLASTIC. PERFORATED PIPE WILL NOT BE ALLOWED.

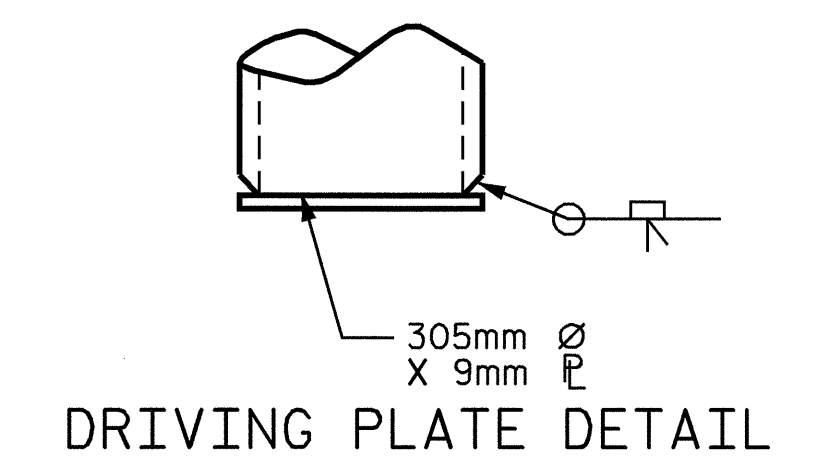
BAGGED STONE SHALL REMAIN IN PLACE UNTIL THE ENGINEER DIRECTS THAT IT BE REMOVED. THE CONTRACTOR SHALL REMOVE AND DISPOSE OF SILT ACCUMULATIONS AT BAGGED STONE WHEN SO DIRECTED BY THE ENGINEER. BAGS SHALL BE REMOVED AND REPLACED WHENEVER THE ENGINEER DETERMINES THAT THEY HAVE DETERIORATED AND LOST THEIR EFFECTIVENESS.

NO SEPARATE PAYMENT WILL BE MADE FOR THIS WORK AND THE ENTIRE COST OF THIS WORK SHALL BE INCLUDED IN THE UNIT CONTRACT PRICE BID FOR THE SEVERAL PAY ITEMS.

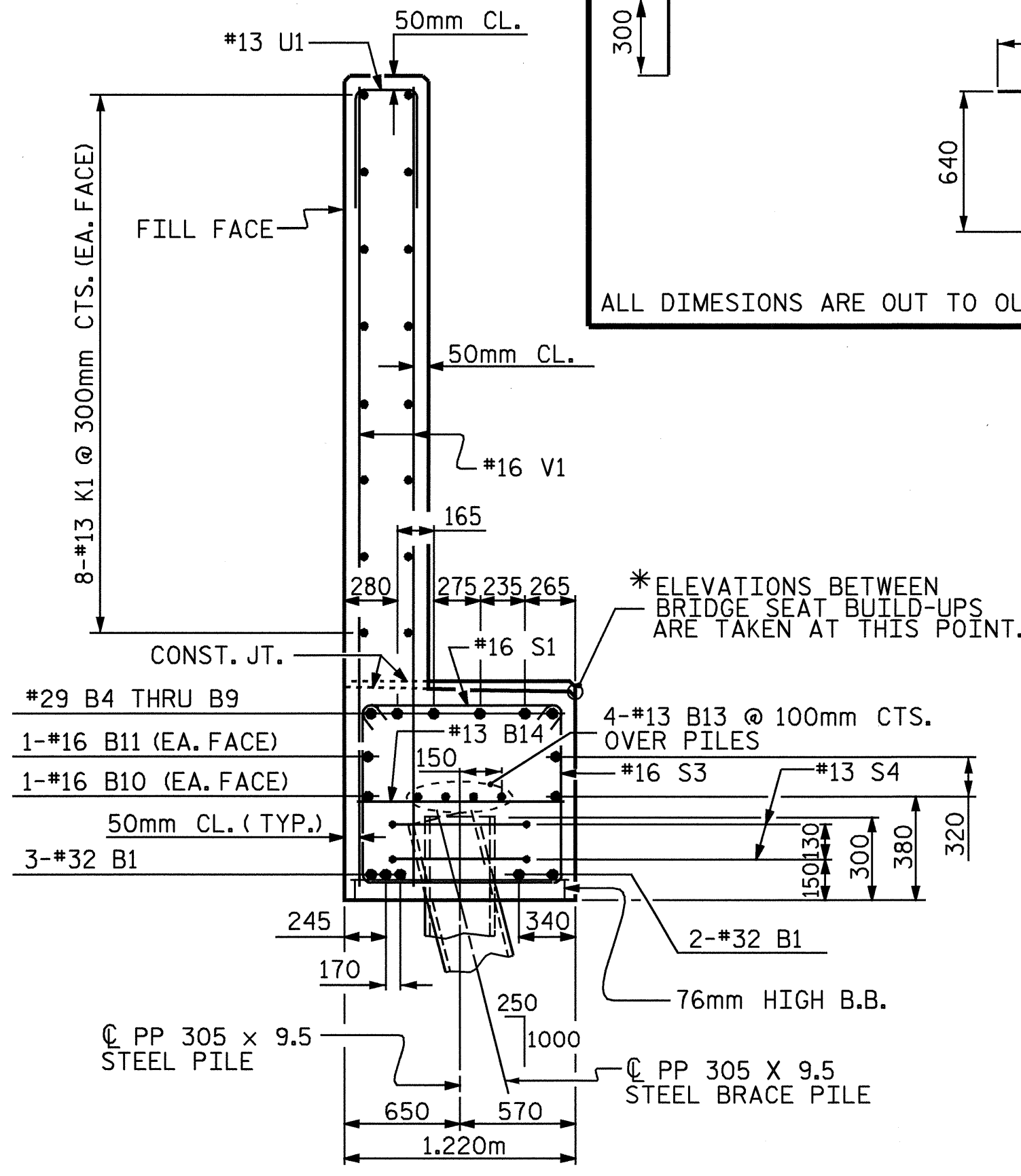
TEMPORARY DRAINAGE AT END BENT



PIPE PILE SPLICE DETAILS



DRIVING PLATE DETAIL



SECTION C-C

BAR TYPES

ALL DIMENSIONS ARE OUT TO OUT.

BILL OF MATERIAL

END BENT 1

BAR NO.	SIZE	TYPE	LENGTH	WEIGHT	
B1	10	32	1	13760	881
B2	6	29	1	11400	346
B3	6	29	STR	11400	346
B4	1	29	1	7580	38
B5	1	29	1	7800	39
B6	1	29	1	7960	40
B7	1	29	1	8220	42
B8	1	29	1	8460	43
B9	1	29	1	8660	44
B10	4	16	STR	12580	78
B11	2	16	STR	6580	20
B12	12	13	STR	5380	64
B13	12	13	STR	8580	102
B14	23	13	STR	1120	26
H1	13	16	5	4320	87
H2	13	16	5	4120	83
H3	14	16	4	4660	101
H4	14	16	4	4860	106
J1	2	19	8	2700	12
J2	6	19	9	1140	15
K1	48	13	STR	8560	409
K2	8	13	STR	1180	9
S1	68	16	2	1400	148
S2	47	16	3	2720	197
S3	21	16	3	3260	106
S4	36	13	7	1980	71
U1	73	13	6	1120	81
U2	22	13	6	2040	45
V1	146	16	STR	2960	671
V2	36	16	STR	3360	188
V3	38	16	STR	3680	217
REINFORCING STEEL				kg	4655

CLASS A CONCRETE BREAKDOWN

POUR	DESCRIPTION	UNIT	QUANTITY
POUR 1	(CAP AND LOWER PORTION OF WINGS)	m ³	29.5
POUR 2	(BACKWALL AND UPPER PORTION OF WINGS)	m ³	24.6
CLASS A CONCRETE TOTAL		m ³	54.1

PP 305 x 9.5 STEEL PILE

NO.	QUANTITY	UNIT
NO. 20	400.0	METERS

PROJECT NO. R-513BA
ROBESON COUNTY
STATION: 113+73.429 -L-

SHEET 3 OF 3

STATE OF NORTH CAROLINA
DEPARTMENT OF TRANSPORTATION
RALEIGH

SUBSTRUCTURE
END BENT 1
(LEFT LANE)

SEAL
11259
DAVID R. ANDERSON
ENGINEER
8/20/04

REVISIONS

NO.	BY:	DATE:	NO.	BY:	DATE:
1			3		
2			4		

SHEET NO. 5-85
TOTAL SHEETS 172