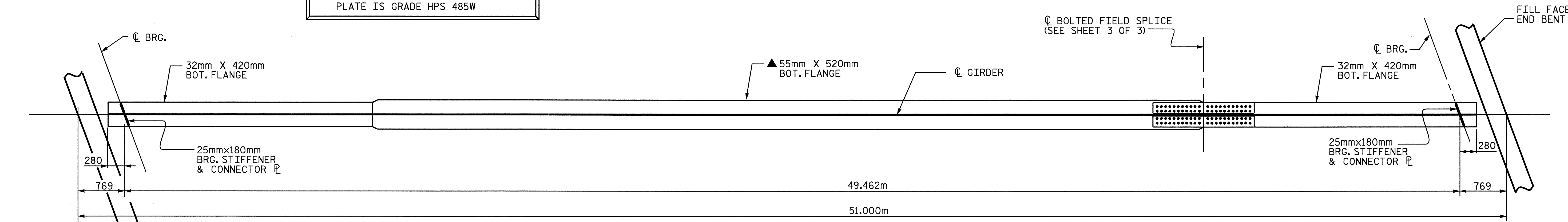
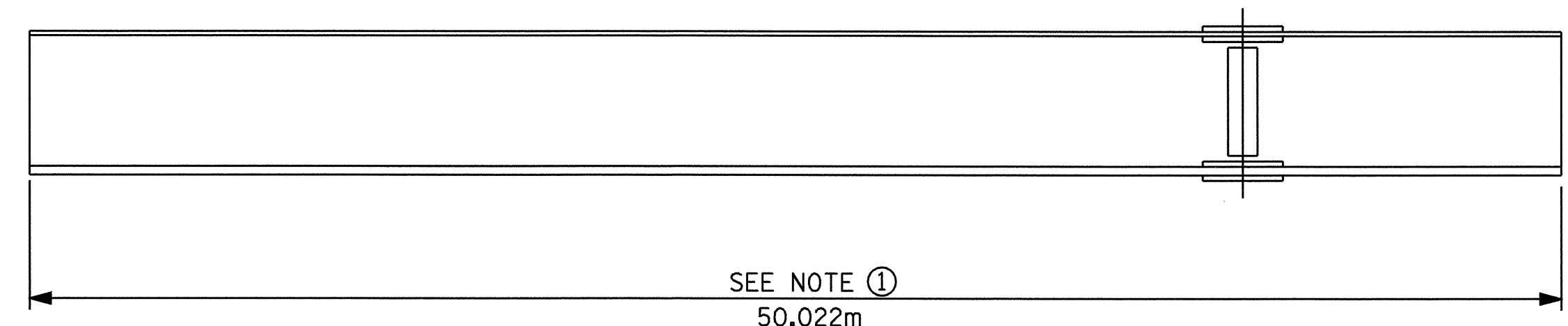


GIRDER ELEVATION

▲ THE CONTRACTOR'S ATTENTION IS CALLED TO THE FACT THAT THE 55mm X 520mm BOTTOM FLANGE PLATE IS GRADE HPS 485W



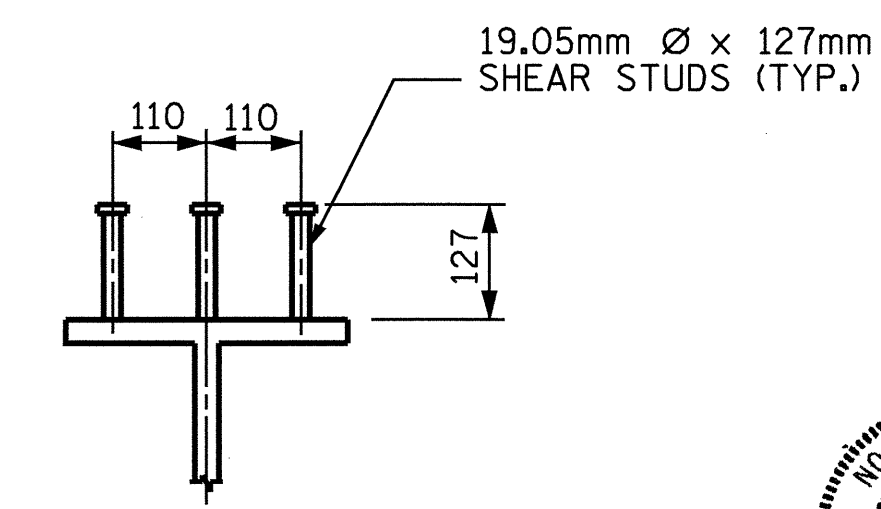
BOTTOM FLANGE DETAIL



GIRDER MAKE UP

NOTE ① : CHARPY V-NOTCH TESTS WILL BE REQUIRED FOR TOP OR BOTTOM FLANGE PLATE WHICH FALLS WITHIN THESE LIMITS. ALSO, CHARPY V-NOTCH TESTS WILL BE REQUIRED FOR ALL WEB PLATES, WEB SPLICE PLATES AND FLANGE SPLICE PLATES. IF THE PERMITTED SHOP FLANGE SPLICE, AS INDICATED FOR THE TOP FLANGE, IS NOT USED, CHARPY V-NOTCH TESTS WILL BE REQUIRED FOR THE ENTIRE TOP FLANGE PLATE.

CHARPY V-NOTCH TESTS FOR PLATE GIRDERS



SHEAR STUD DETAILS

STATE OF NORTH CAROLINA
PROFESSIONAL ENGINEER
SEAL 11 259
DAVID R. ANDERSON
9/16/04

PROJECT NO. R-513BA
ROBESON COUNTY
STATION: 138+30.800 -L-
SHEET 1 OF 3

STATE OF NORTH CAROLINA
DEPARTMENT OF TRANSPORTATION
RALEIGH
SUPERSTRUCTURE
STRUCTURAL
STEEL DETAILS
LEFT LANE

REVISIONS						SHEET NO.	
NO.	BY:	DATE:	NO.	BY:	DATE:	TOTAL SHEETS	
1			3			9-127	
2			4			172	

DRAWN BY : N. Q. TRAN DATE : 6-23-03
CHECKED BY : T. A. WALTER DATE : 3-23-04