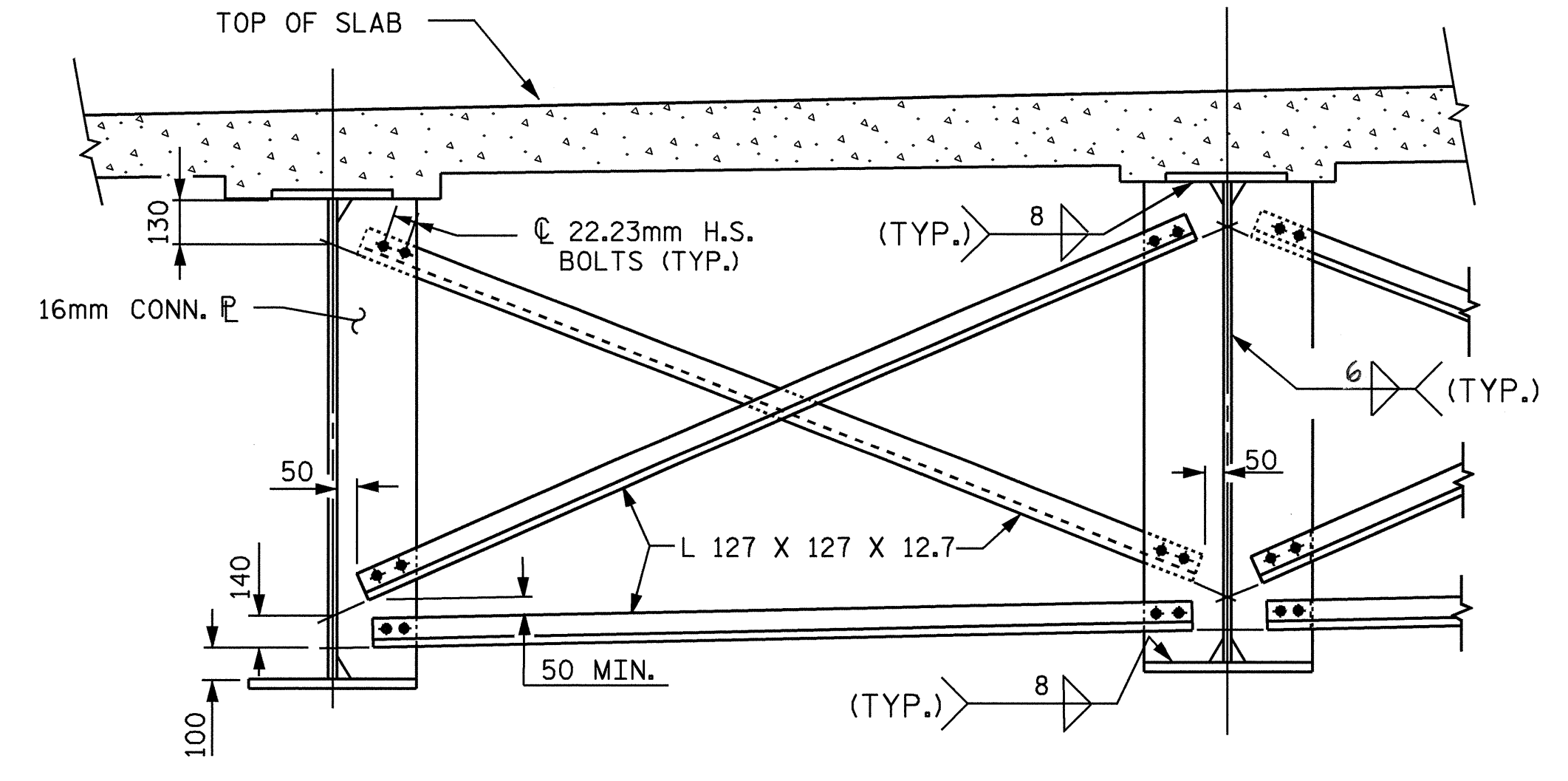
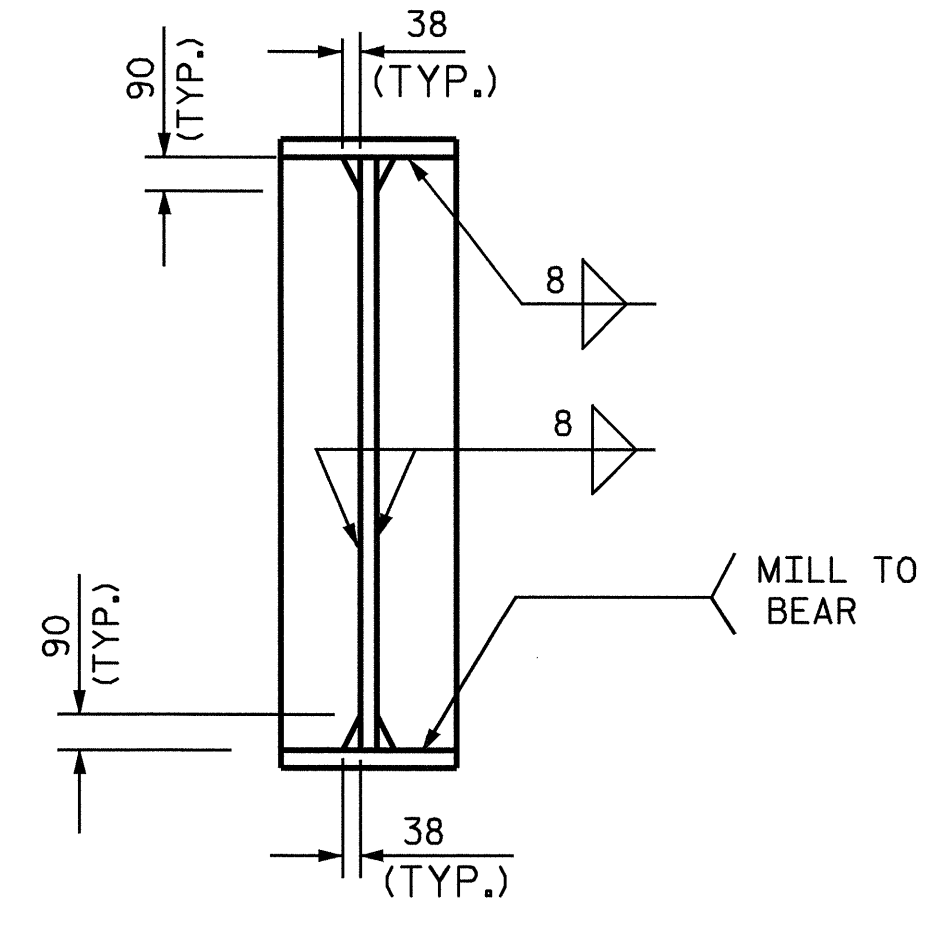


**TYPICAL END BENT DIAPHRAGM (D1)**

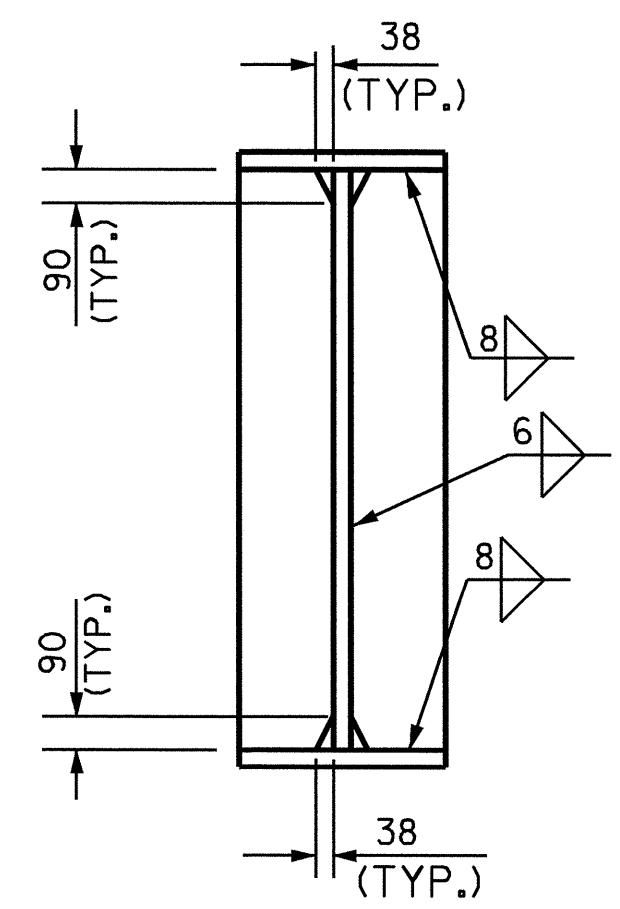


**TYPICAL INTERMEDIATE (D2)**

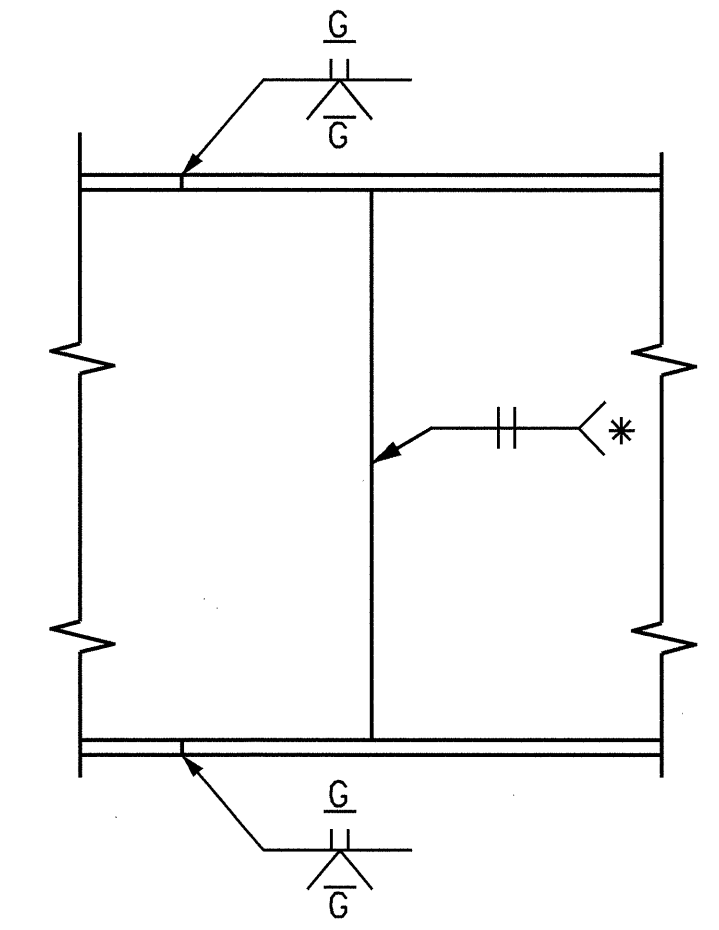


**BEARING STIFFENER / CONN. PLATE**

@ END BENTS #1 & #2

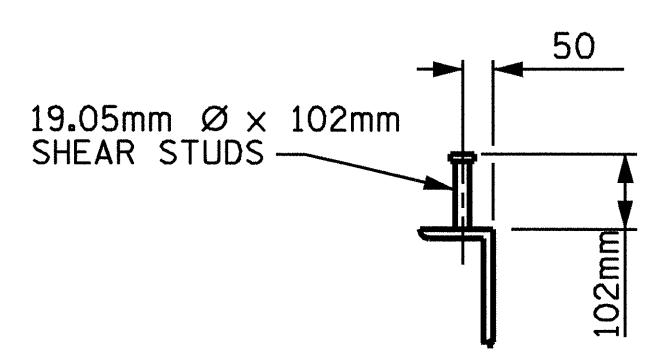


**CONNECTOR PLATE**

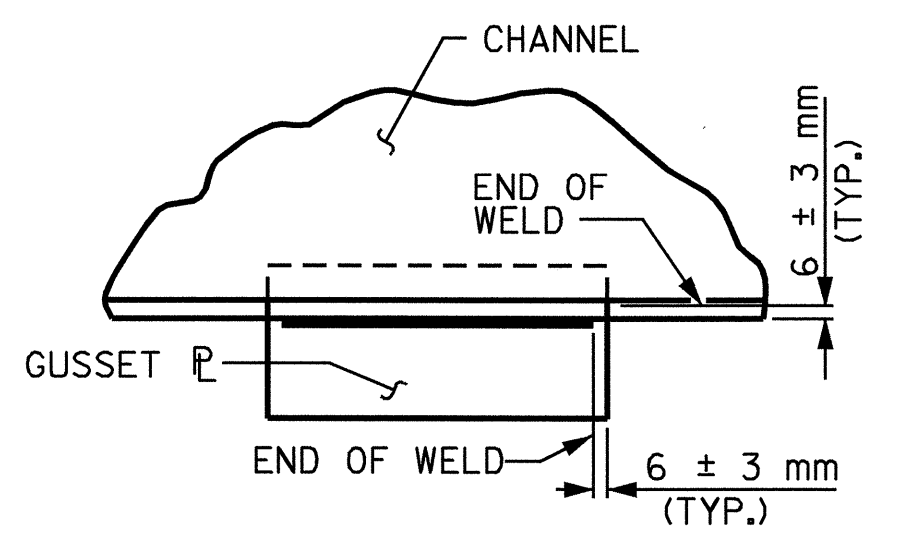


**PERMISSIBLE SHOP WEB SPLICE**

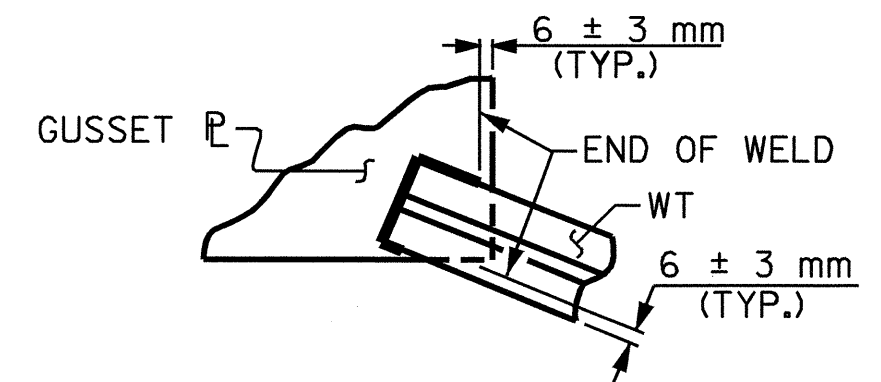
\* GRIND SMOOTH AND FLUSH ON OUTSIDE OF EXTERIOR GIRDERS



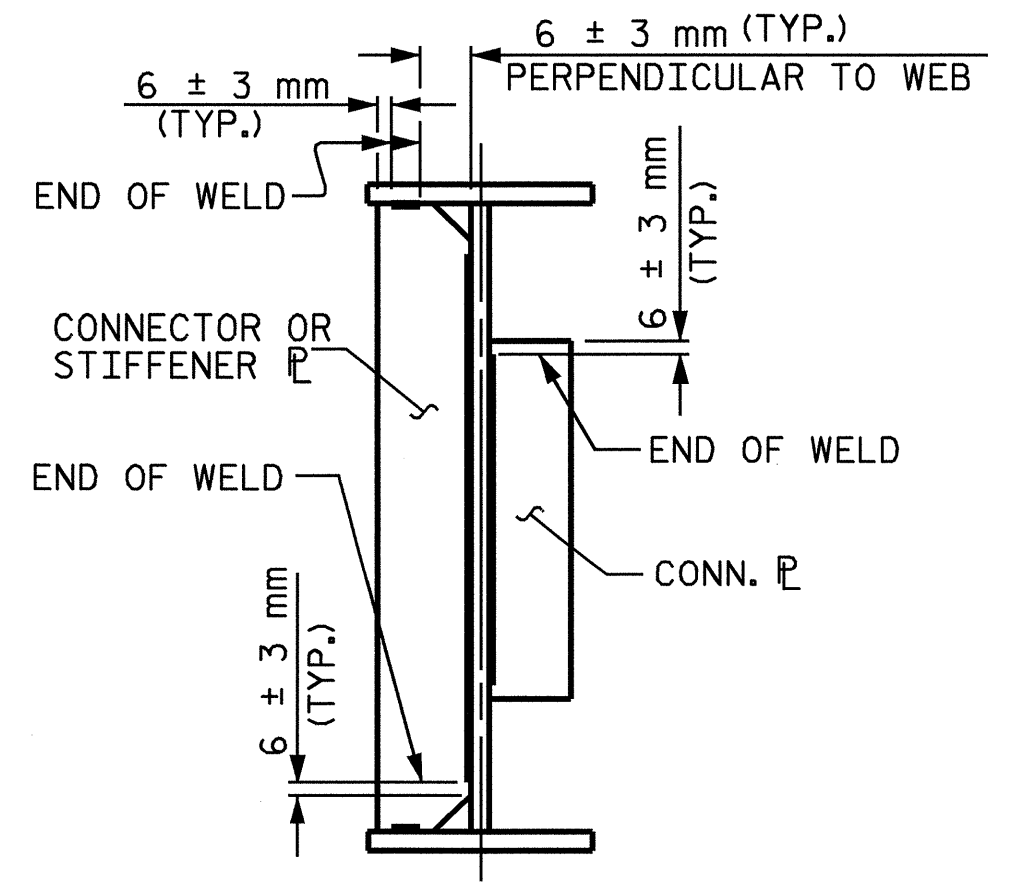
**SHEAR STUD DETAILS**



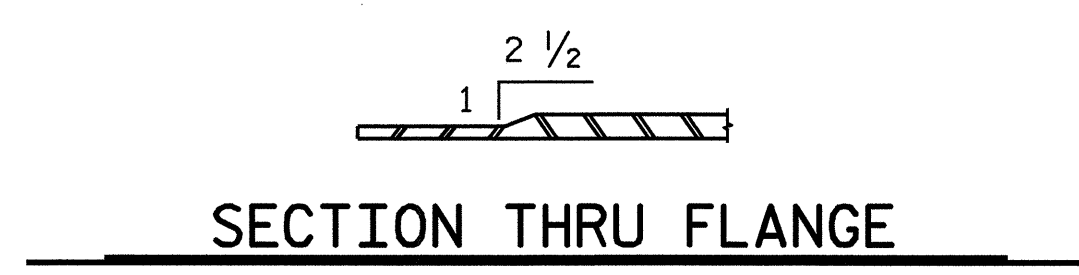
**TYPICAL GUSSET PLATE CONNECTION**



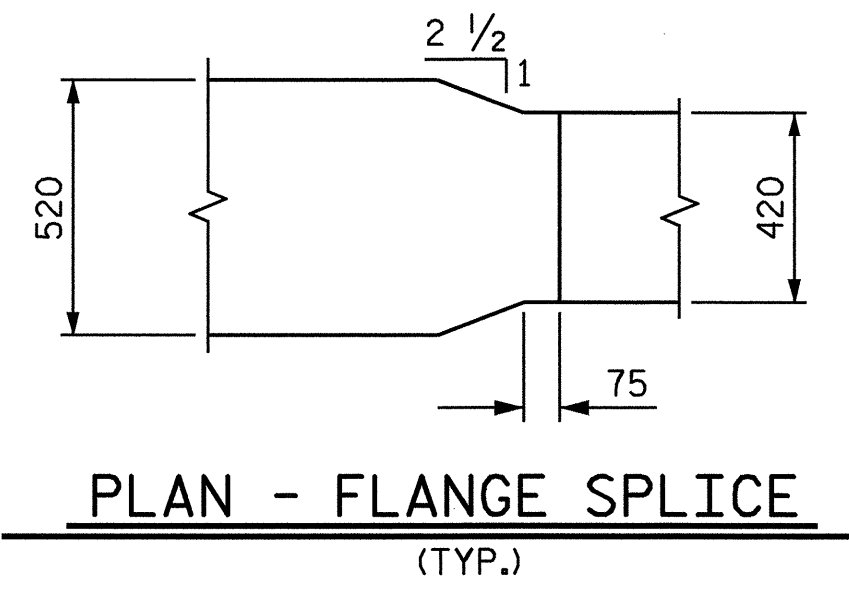
**TYPICAL "TEE" TO GUSSET PLATE CONNECTION  
WELD TERMINATION DETAILS**



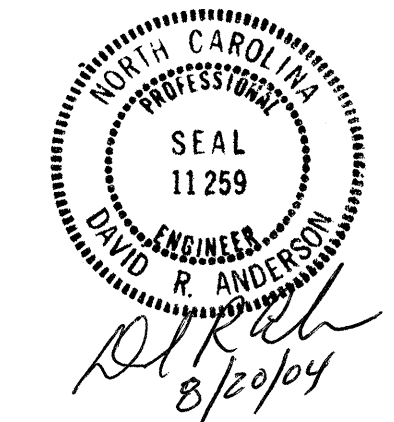
**TYPICAL STIFFENER OR  
CONNECTOR PLATE CONNECTIONS**



**SECTION THRU FLANGE**



**PLAN - FLANGE SPLICE (TYP.)**



PROJECT NO. R-513BA  
ROBESON COUNTY  
 STATION: 138+30.800 -L-  
 SHEET 2 OF 3

STATE OF NORTH CAROLINA  
 DEPARTMENT OF TRANSPORTATION  
 RALEIGH  
 SUPERSTRUCTURE  
 STRUCTURAL  
 STEEL DETAILS  
 (RIGHT LANE)

REVISIONS						SHEET NO.
NO.	BY:	DATE:	NO.	BY:	DATE:	
1			3			TOTAL SHEETS
2			4			172

DRAWN BY: N. Q. TRAN DATE: 6-16-03  
 CHECKED BY: T. A. WALTER DATE: 3-16-04