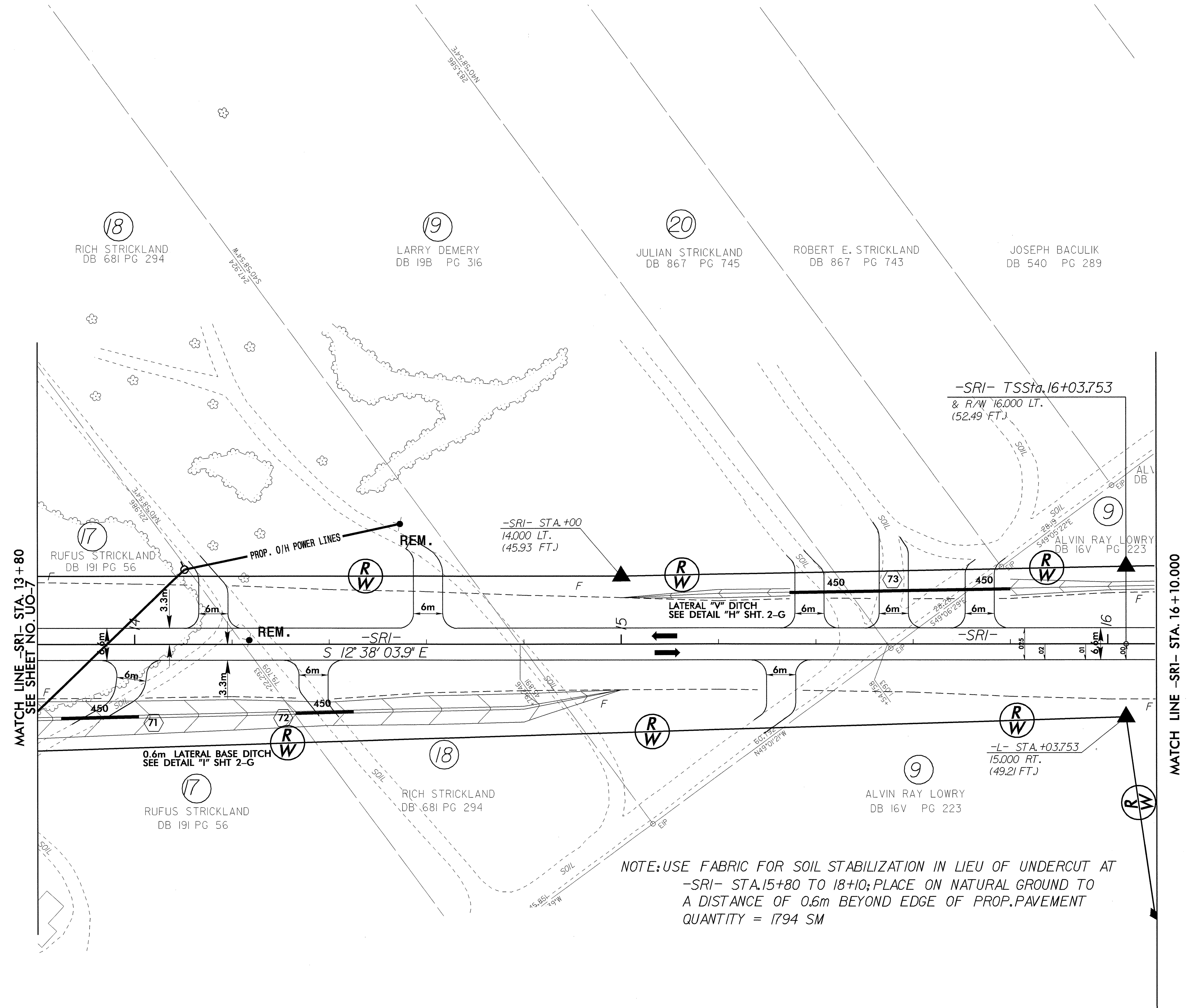
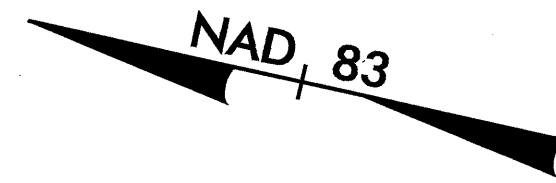


UTILITIES BY OTHERS

NOTE:  
ALL PROPOSED UTILITY WORK  
SHOWN ON THIS SHEET WILL  
BE DONE BY OTHERS



NOTE: USE FABRIC FOR SOIL STABILIZATION IN LIEU OF UNDERCUT AT  
-SRI- STA. 15+80 TO 18+10; PLACE ON NATURAL GROUND TO  
A DISTANCE OF 0.6m BEYOND EDGE OF PROP. PAVEMENT  
QUANTITY = 1794 SM

NOTE: FOR PROFILE OF -SRI-, SEE SHEET NO. 42

042597

15-JUN-2004 14:02  
egadbold