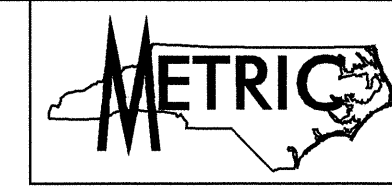
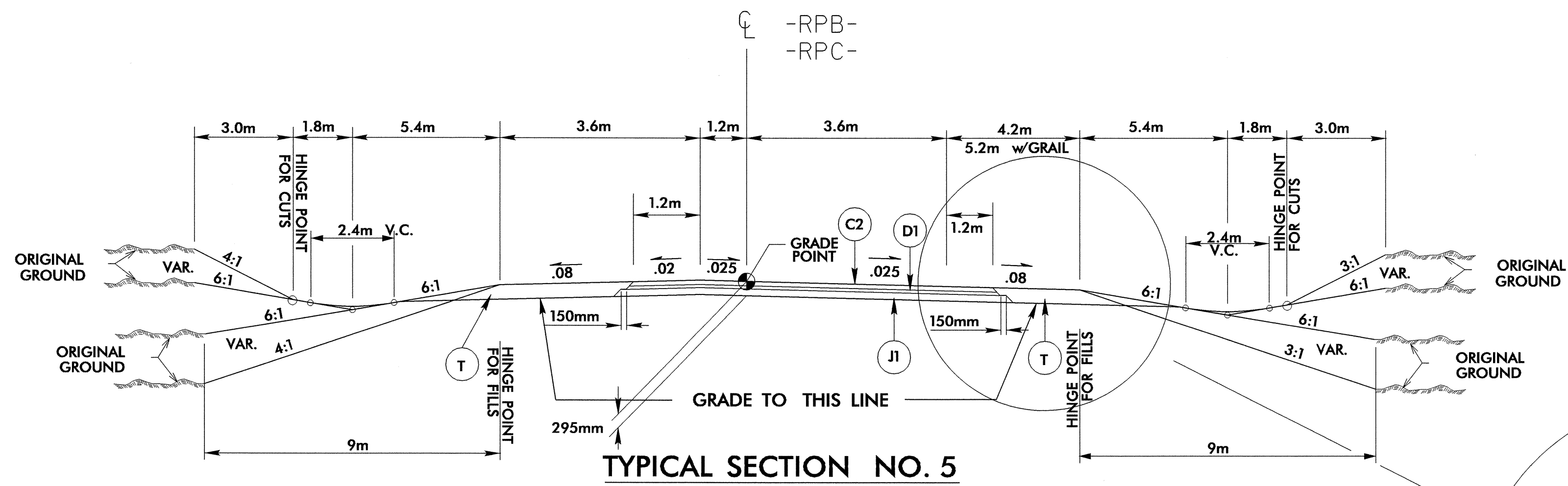


C2	80 mm S9.5B
C3	VAR. DEPTH S9.5B
C4	80 mm S9.5C
C5	VAR. DEPTH S9.5C
C6	100mm S12.5C
C7	VAR. DEPTH S12.5C
D1	65 mm I19.0B
D2	VAR. DEPTH I19.0B
D3	65 mm I19.0C
D6	VAR. DEPTH I19.0C
E1	75 mm B25.0C
E2	100 mm B25.0C
E3	VAR. DEPTH B25.0C
J1	150 mm ABC
J3	250 mm ABC
J4	VAR. DEPTH ABC
P	PRIME COAT
R1	750 mm CONC. C&G
T	EARTH
U	EXISTING PAVEMENT
W	WEDGING



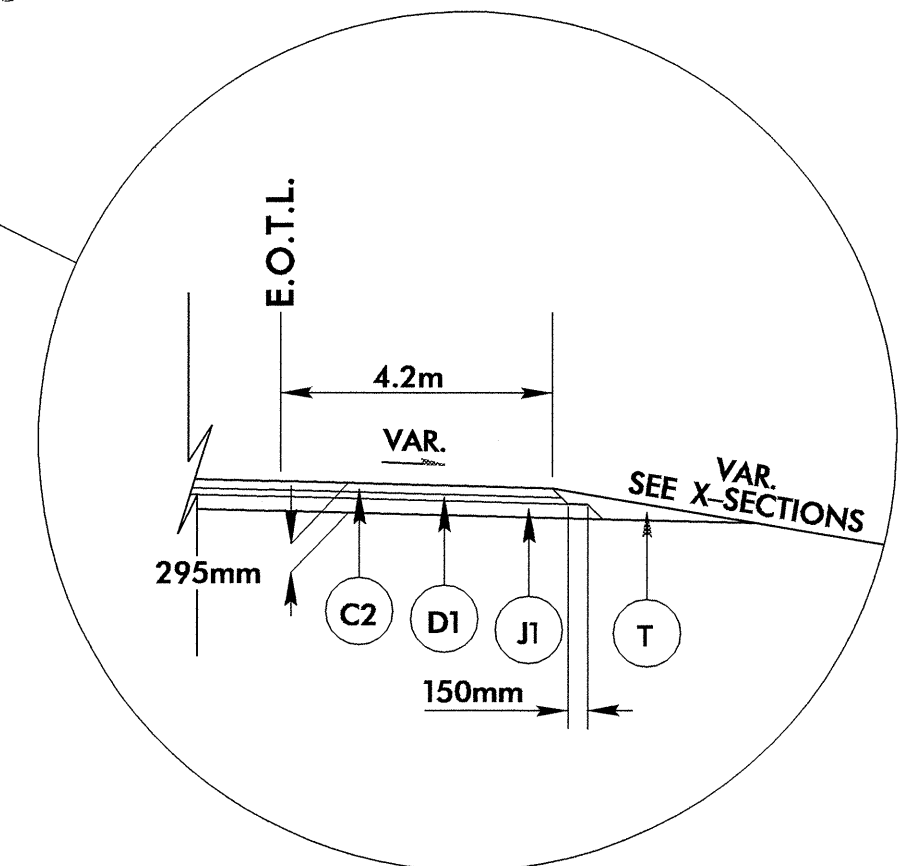
PROJECT REFERENCE NO.	R-0513BA	SHEET NO.	2B
ROADWAY DESIGN ENGINEER	[Signature]	PAVEMENT DESIGN ENGINEER	[Signature]
[Professional Seal: R. LOVE, No. 25873, State of North Carolina]		[Professional Seal: CHEN, No. 127104, State of North Carolina]	



TYPICAL SECTION NO. 5

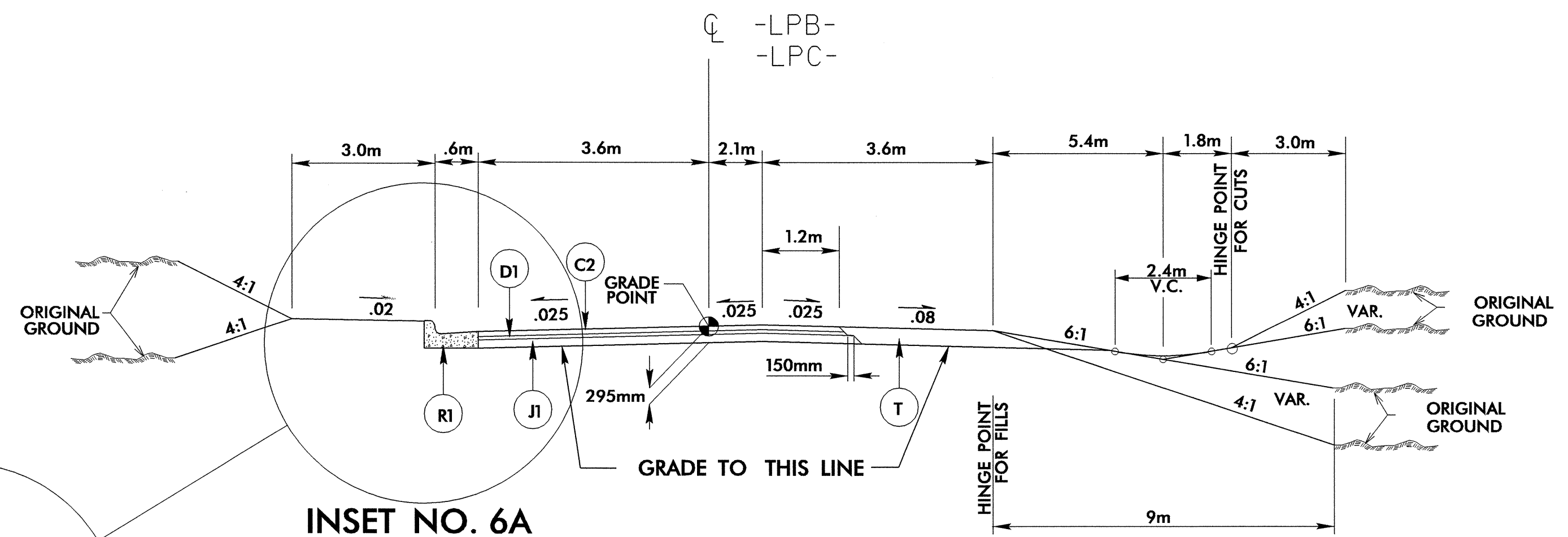
-RPB- Sta. 10+00 - 15+05.722
 -RPC- Sta. 10+00 - 18+86.665
 Note: See Plans for Islands

NOTE: REVERSE TYPICAL FOR -RPB-
 SEE PLAN SHEET NO. 10 & 11
 FOR LOCATION OF TRUCK PULL OFF AREA



INSET NO. 5A

-RPB- Sta. 13+20 - 14+54.410

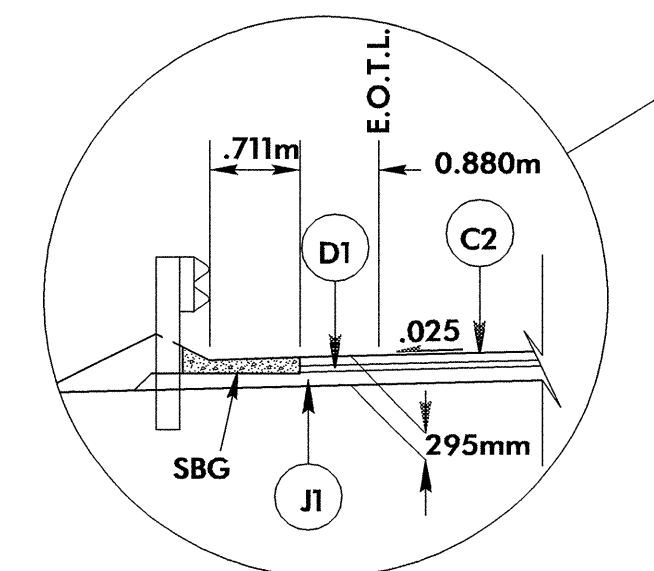


INSET NO. 6A

TYPICAL SECTION NO. 6

-LPB- Sta. 10+00 - 12+69.405
 -LPC- Sta. 10+00 - 14+76.164

NOTE: REVERSE TYPICAL FOR -LPB-
 Note: See Plans for Islands



INSET NO. 6A

-LPC- STA. 10+00 TO STA. 10+60