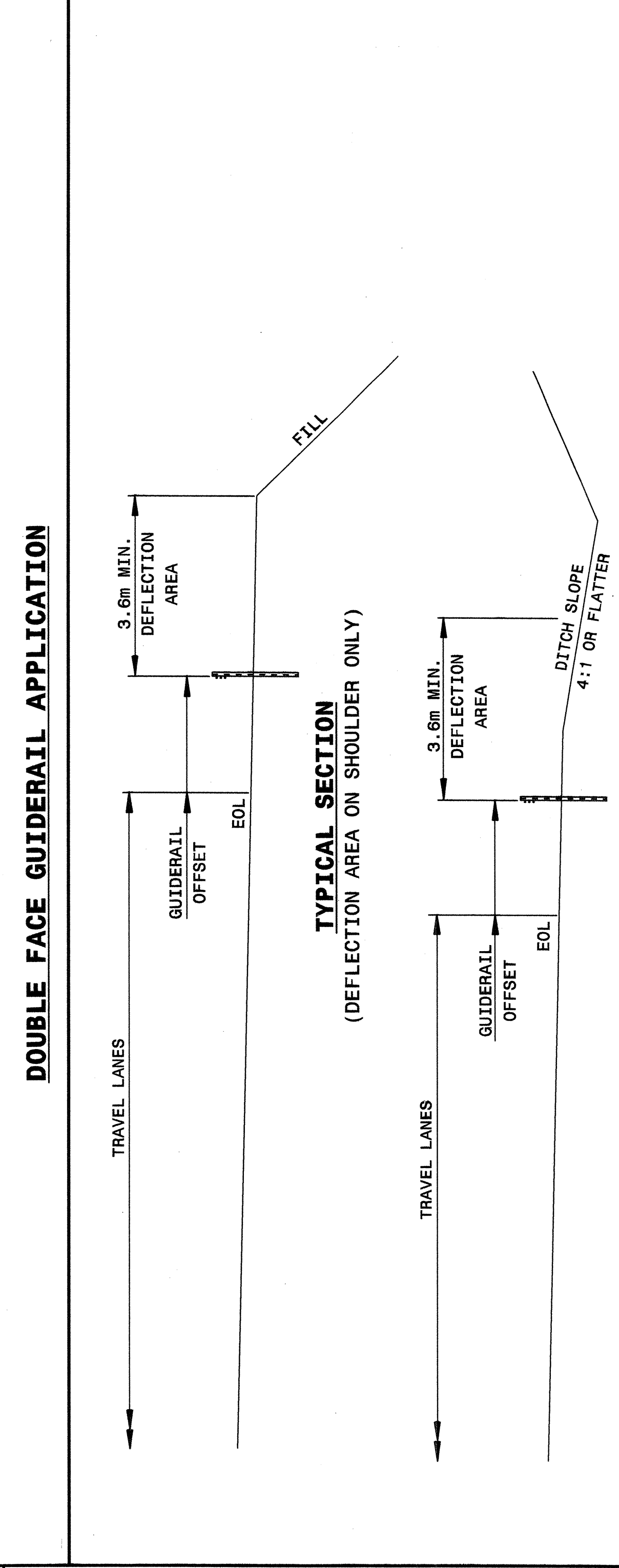
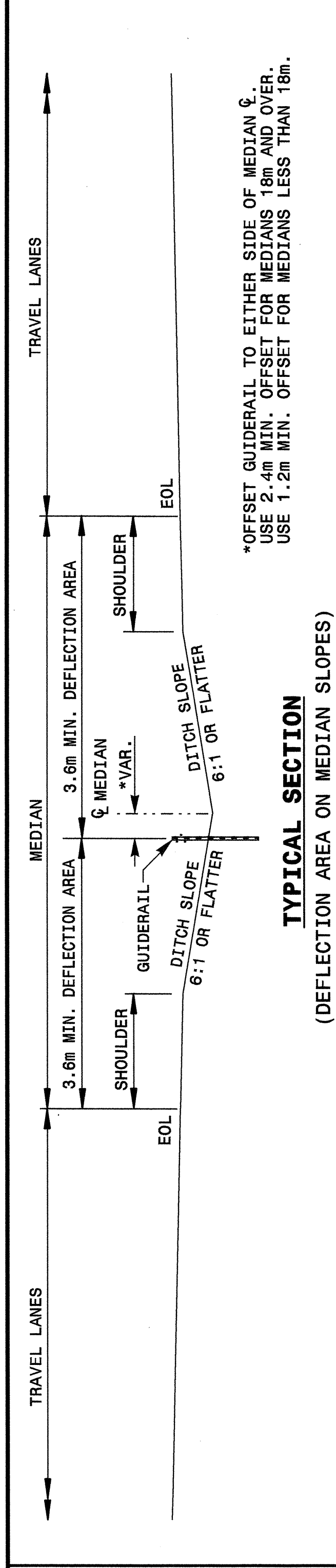




STATE OF NORTH CAROLINA DEPT. OF TRANSPORTATION DIVISION OF HIGHWAYS RALEIGH, N.C.

METRIC DETAIL DRAWING FOR CABLE GUIDERAIL DESIGN AND PLACEMENT

SHEET 3 OF 11 865D01



TYPICAL SECTION
(DEFLECTION AREA ON SHOULDER AND DITCH SLOPE)

SINGLE FACE GUIDERAIL APPLICATION

Note: This drawing is dimensioned in millimeters unless otherwise depicted within the drawing.

STATE OF NORTH CAROLINA DEPT. OF TRANSPORTATION DIVISION OF HIGHWAYS RALEIGH, N.C.

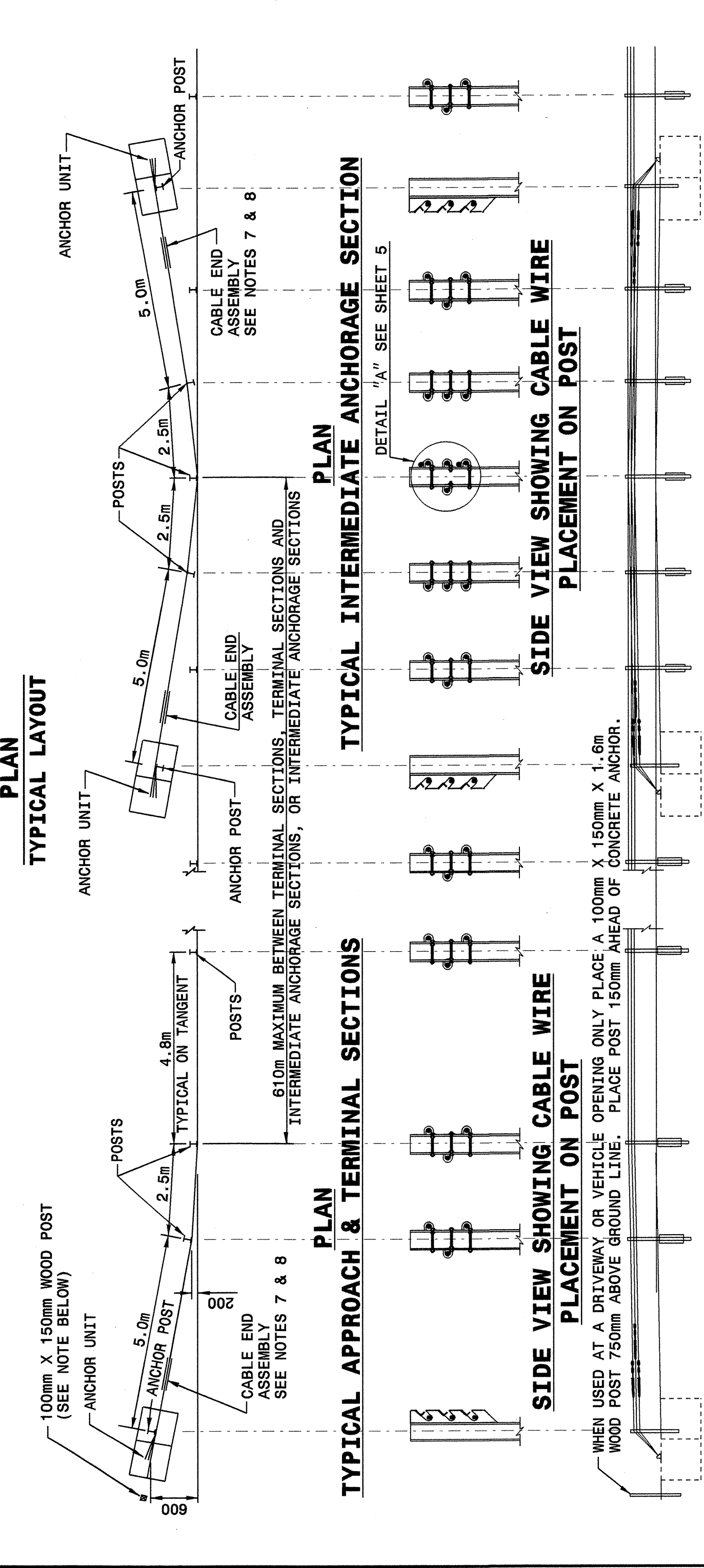
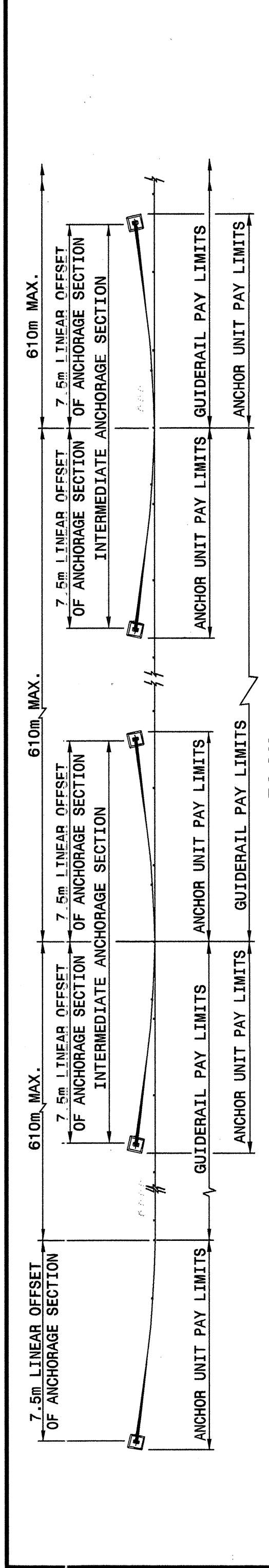
METRIC DETAIL DRAWING FOR CABLE GUIDERAIL DESIGN AND PLACEMENT

SHEET 3 OF 11 865D01

STATE OF NORTH CAROLINA DEPT. OF TRANSPORTATION DIVISION OF HIGHWAYS RALEIGH, N.C.

METRIC DETAIL DRAWING FOR CABLE GUIDERAIL GUIDERAIL LAYOUT

SHEET 4 OF 11 865D01



*PROVIDE OPENINGS ONLY FOR AREAS AS DESIGNATED ON ROADWAY PLAN SHEETS.

ELEVATION

TYPICAL APPROACH & TERMINAL SECTIONS

TYPICAL INTERMEDIATE ANCHORAGE SECTION

Note: TYPICAL APPROACH & TERMINAL SECTIONS This drawing is dimensioned in millimeters unless otherwise depicted within the drawing.

STATE OF NORTH CAROLINA DEPT. OF TRANSPORTATION DIVISION OF HIGHWAYS RALEIGH, N.C.

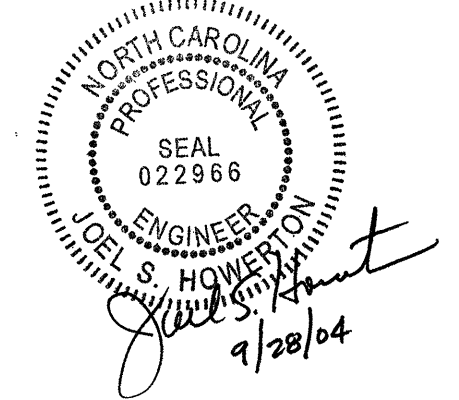
METRIC DETAIL DRAWING FOR CABLE GUIDERAIL GUIDERAIL LAYOUT

SHEET 4 OF 11 865D01

DESIGN SERVICES UNIT STANDARDS AND SPECIAL DESIGN Office 919-250-4128 FAX 919-250-4119

SEE PLATE FOR TITLE

ORIGINAL BY: 2002 STANDARDS DATE: 1-15-02
 MODIFIED BY: E.E. WARD DATE: 4-07-04
 CHECKED BY: C. B. [Signature] DATE: 4-16-04
 FILE SPEC.: /usr/std/02stds to details/metric/86501/0865d01.dgn



I:\APR-2004\0865\stds\ward\stds to Spectral Details\metric\86501\0865d01.mxd