
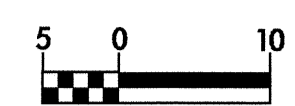
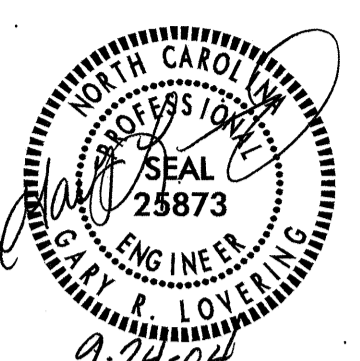
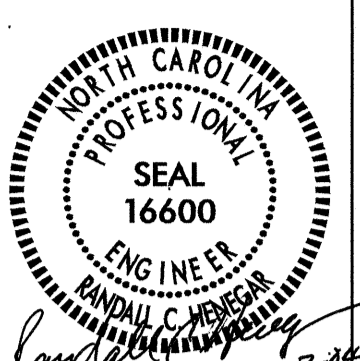
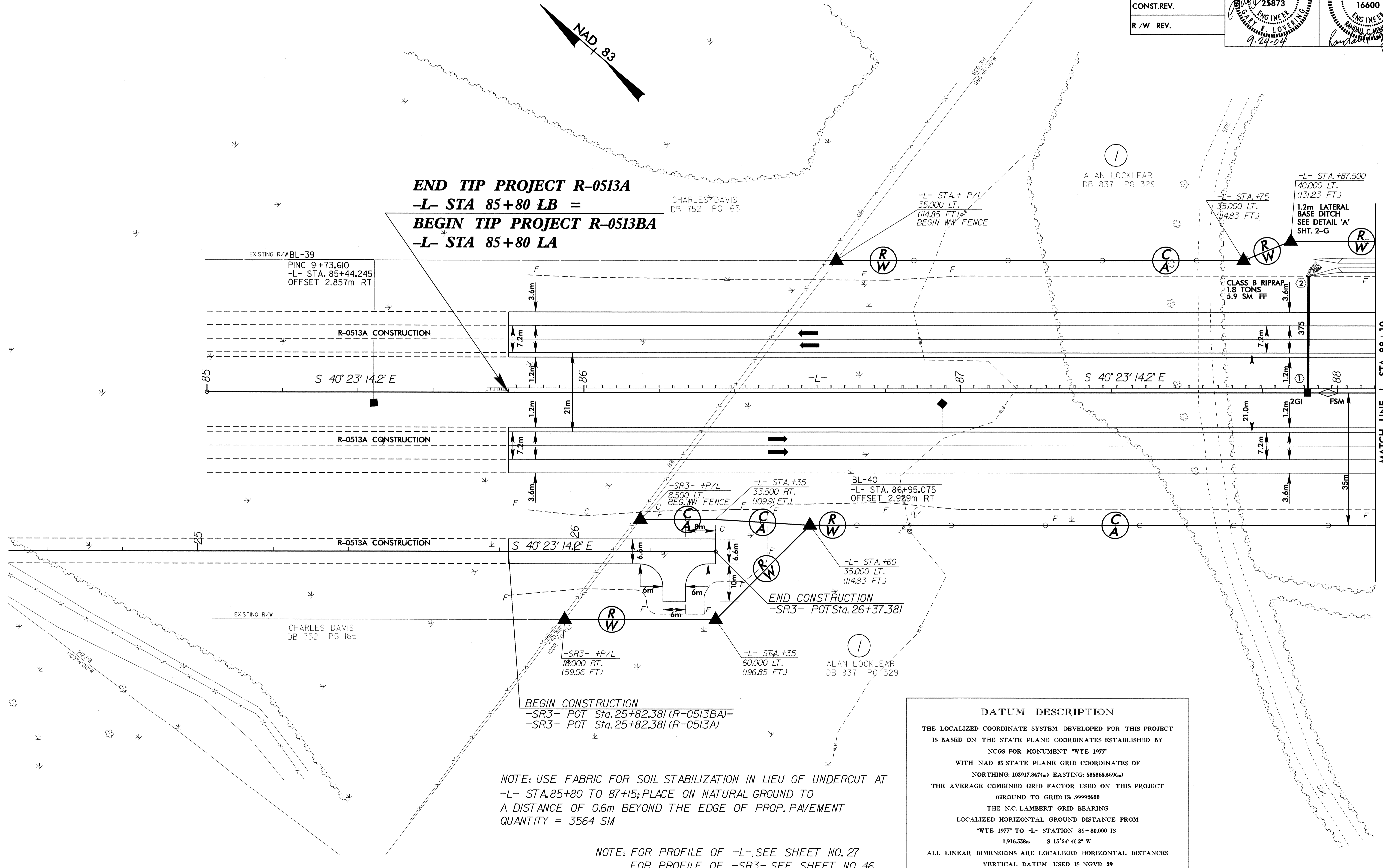


8/17/2019

20-SEP-2020 10:47 AM
m:\work\19086\19086.dwg

  CONST. REV. R / W REV.	PROJECT REFERENCE NO. R-0513BA	SHEET NO. 4
	R / W SHEET NO.	
ROADWAY DESIGN ENGINEER	HYDRAULICS ENGINEER	
 9-24-04	 9-27-04	



END TIP PROJECT R-0513A
-L- STA 85+80 LB =
BEGIN TIP PROJECT R-0513A
-L- STA 85+80 LA

NOTE: USE FABRIC FOR SOIL STABILIZATION IN LIEU OF UNDERCUT AT
 -L- STA. 85+80 TO 87+15; PLACE ON NATURAL GROUND TO
 A DISTANCE OF 0.6m BEYOND THE EDGE OF PROP. PAVEMENT
 QUANTITY = 3564 SM

NOTE: FOR PROFILE OF -L-, SEE SHEET NO. 27
 FOR PROFILE OF -SR3-, SEE SHEET NO. 46

DATUM DESCRIPTION

THE LOCALIZED COORDINATE SYSTEM DEVELOPED FOR THIS PROJECT IS BASED ON THE STATE PLANE COORDINATES ESTABLISHED BY NCGS FOR MONUMENT "WYE 1977" WITH NAD 83 STATE PLANE GRID COORDINATES OF
 NORTHING: 105917.867(m) EASTING: 585865.569(m)

THE AVERAGE COMBINED GRID FACTOR USED ON THIS PROJECT (GROUND TO GRID) IS: .99992600

THE N.C. LAMBERT GRID BEARING LOCALIZED HORIZONTAL GROUND DISTANCE FROM "WYE 1977" TO -L- STATION 85+80.000 IS
 1,916.358m S 15°54'46.2" W

ALL LINEAR DIMENSIONS ARE LOCALIZED HORIZONTAL DISTANCES
 VERTICAL DATUM USED IS NGVD 29

MATCH LINE -L- STA. 88+10
SEE SHEET NO. 5