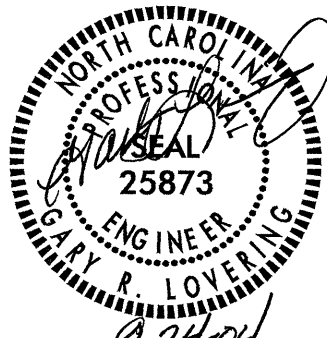
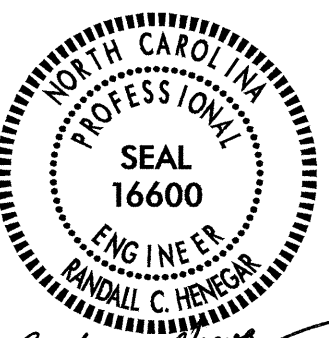
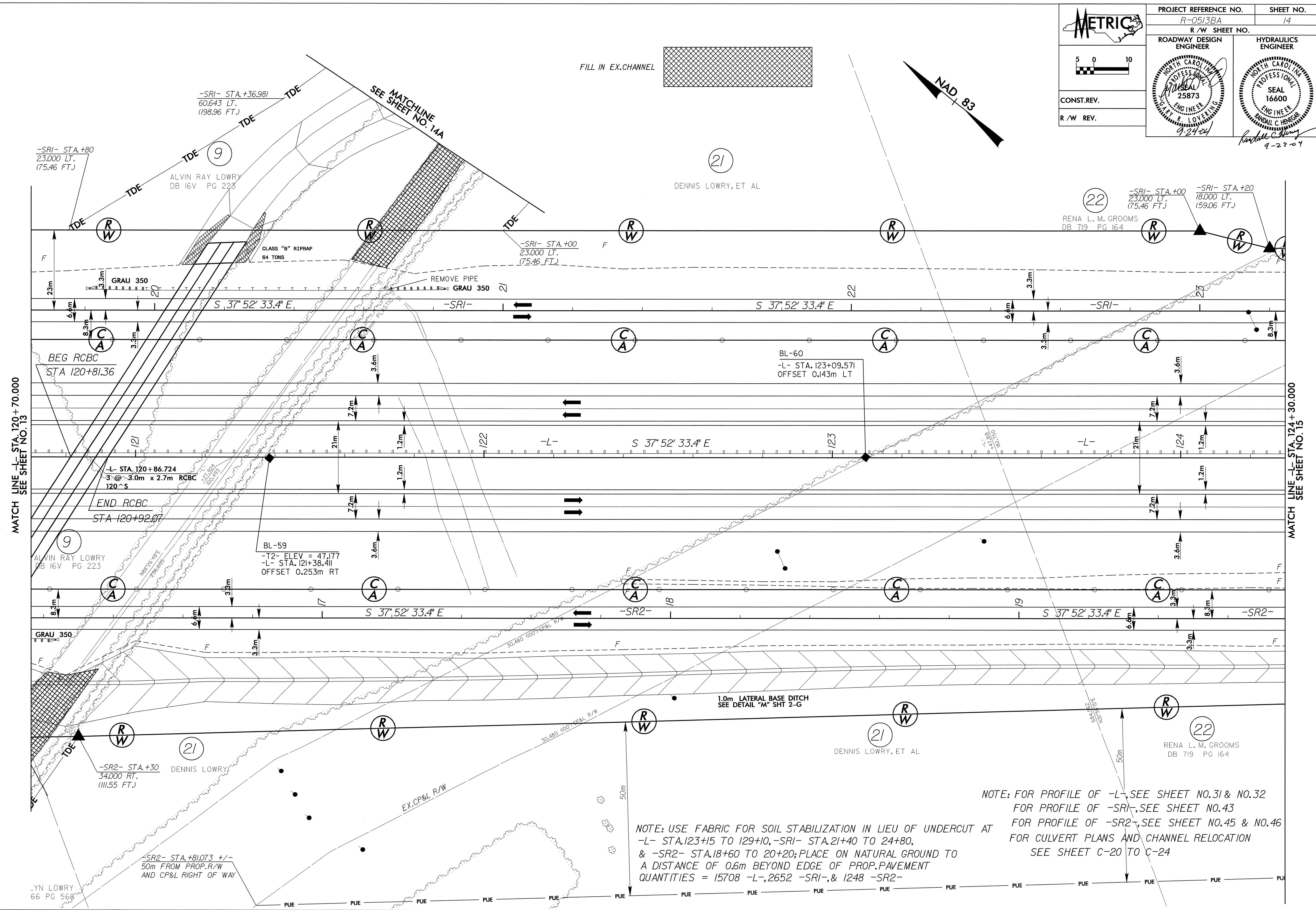
 5 0 10 CONST. REV. R/W REV.	PROJECT REFERENCE NO. R-0513BA	SHEET NO. 14
	R/W SHEET NO.	
ROADWAY DESIGN ENGINEER	HYDRAULICS ENGINEER	
 DENNIS LOWRY, ET AL 9-24-02	 RENA L. M. GROOMS 9-22-04	



NOTE: USE FABRIC FOR SOIL STABILIZATION IN LIEU OF UNDERCUT AT  
 -L- STA. 123+15 TO 129+10, -SRI- STA. 21+40 TO 24+80,  
 & -SR2- STA. 18+60 TO 20+20; PLACE ON NATURAL GROUND TO  
 A DISTANCE OF 0.6m BEYOND EDGE OF PROP. PAVEMENT  
 QUANTITIES = 15708 -L-, 2652 -SRI-, & 1248 -SR2-

NOTE: FOR PROFILE OF -L-, SEE SHEET NO. 31 & NO. 32  
 FOR PROFILE OF -SRI-, SEE SHEET NO. 43  
 FOR PROFILE OF -SR2-, SEE SHEET NO. 45 & NO. 46  
 FOR CULVERT PLANS AND CHANNEL RELOCATION  
 SEE SHEET C-20 TO C-24

8/17/99  
 25 SEP 2004 15:57  
 R:\projects\0513BA\Drawings\14.dwg  
 PLOT AT 100%