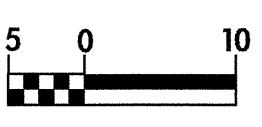
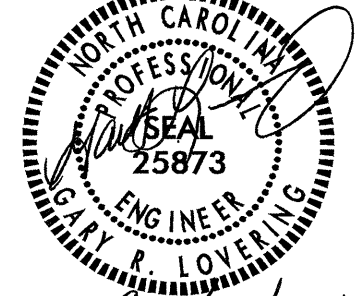
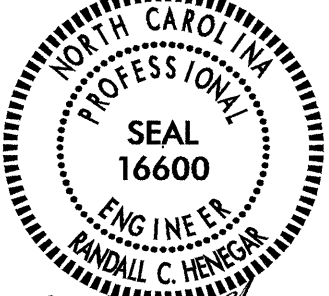
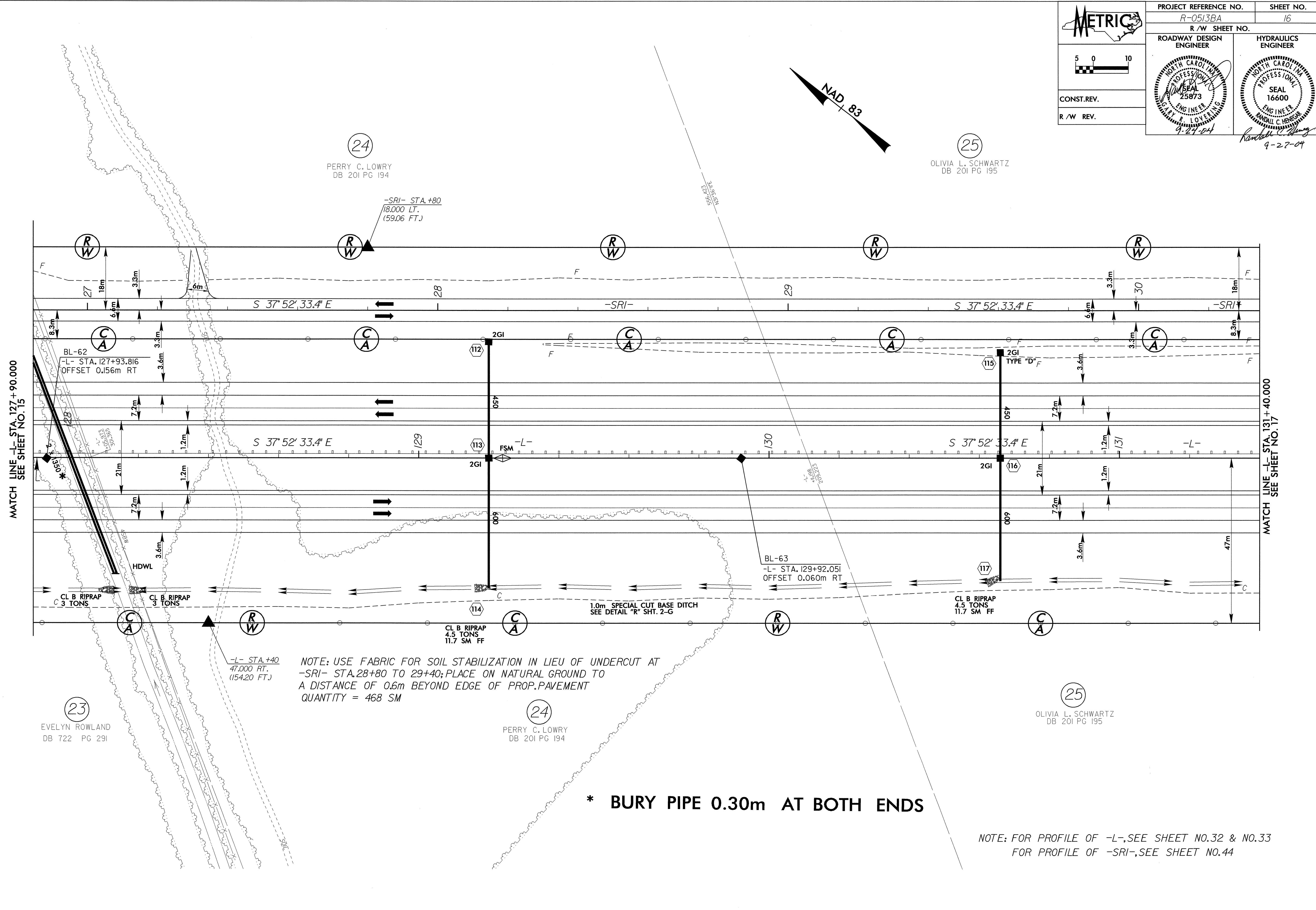
	PROJECT REFERENCE NO.	SHEET NO.
	R-0513BA	16
	R/W SHEET NO.	
	ROADWAY DESIGN ENGINEER	HYDRAULICS ENGINEER
CONST. REV.	 	
R/W REV.	R/W REV. 9-27-04	



8/17/03

20-SEP-2004 13:41
m:\p\0513ba\16.dwg
A:\R0513BA

MATCH LINE -L- STA. 127+90.000
SEE SHEET NO. 15

MATCH LINE -L- STA. 131+40.000
SEE SHEET NO. 17

(23) EVELYN ROWLAND
DB 722 PG 291

(24) PERRY C. LOWRY
DB 201 PG 194

(25) OLIVIA L. SCHWARTZ
DB 201 PG 195

-L- STA. +40
47,000 RT.
(154,20 FT.)

NOTE: USE FABRIC FOR SOIL STABILIZATION IN LIEU OF UNDERCUT AT
-SRI- STA. 28+80 TO 29+40; PLACE ON NATURAL GROUND TO
A DISTANCE OF 0.6m BEYOND EDGE OF PROP. PAVEMENT
QUANTITY = 468 SM

(24) PERRY C. LOWRY
DB 201 PG 194

(25) OLIVIA L. SCHWARTZ
DB 201 PG 195

*** BURY PIPE 0.30m AT BOTH ENDS**

NOTE: FOR PROFILE OF -L-, SEE SHEET NO. 32 & NO. 33
FOR PROFILE OF -SRI-, SEE SHEET NO. 44