
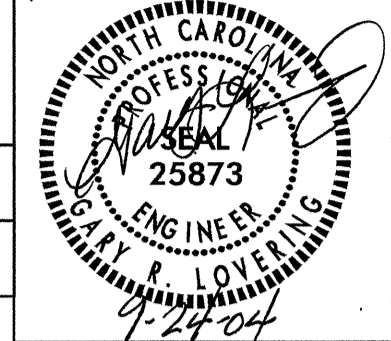
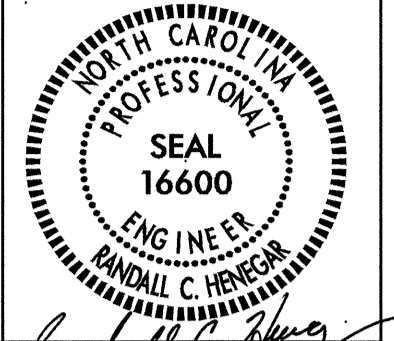
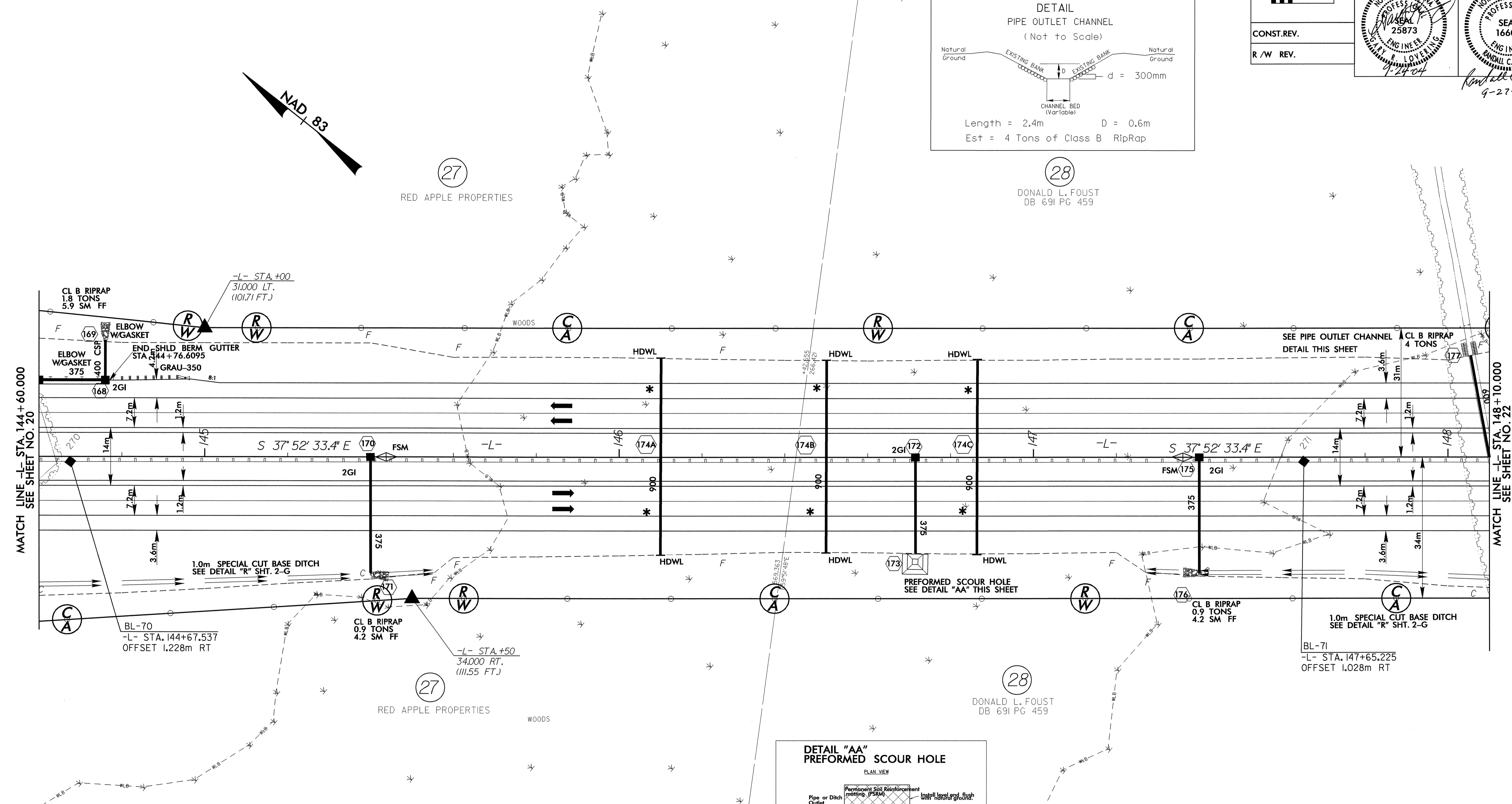
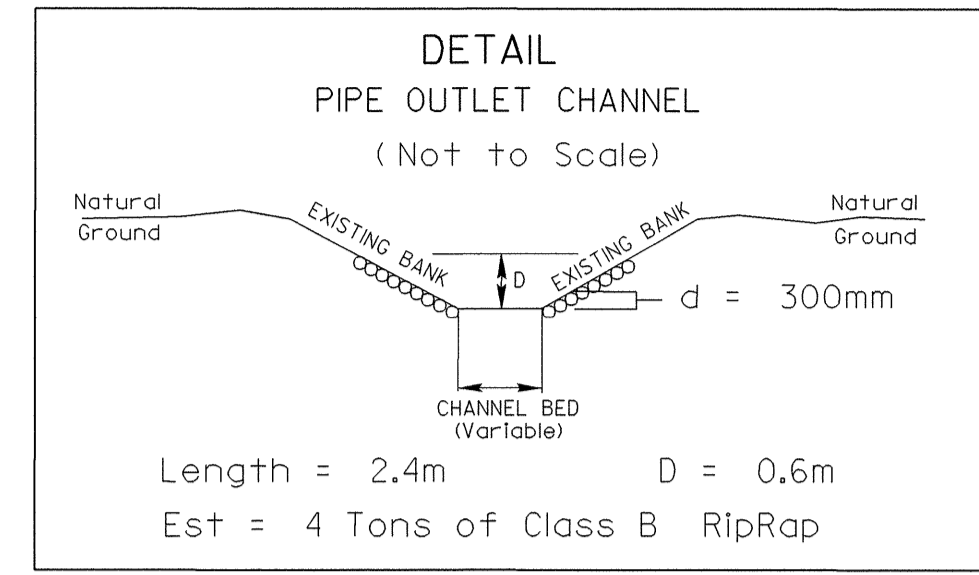
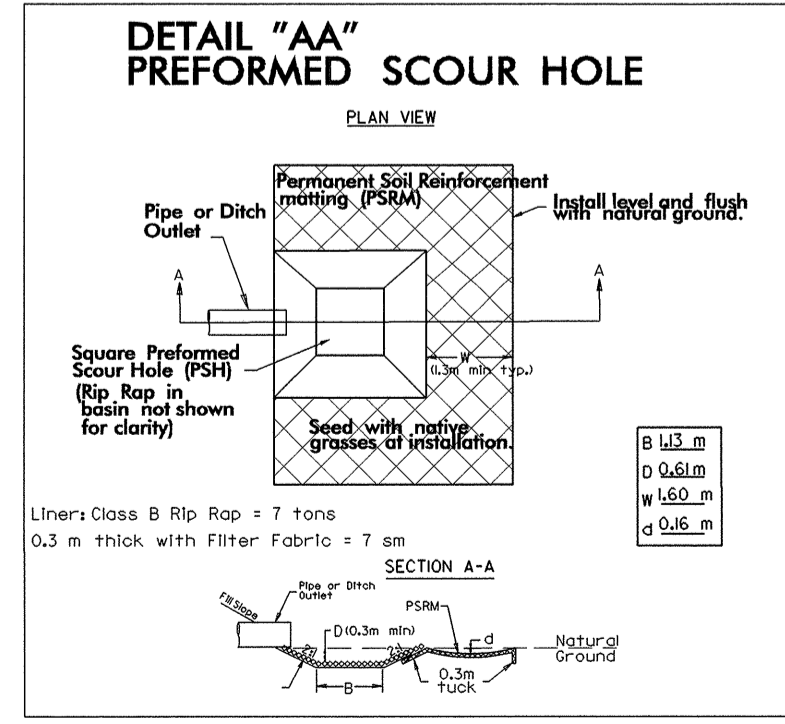


8/17/2004

 5 0 10 CONST. REV. R/W REV.	PROJECT REFERENCE NO. R-0513BA	SHEET NO. 21
	R/W SHEET NO.	
ROADWAY DESIGN ENGINEER	HYDRAULICS ENGINEER	
		



NOTE: USE FABRIC FOR SOIL STABILIZATION IN LIEU OF UNDERCUT AT
 -L- STA. 146+50 TO 147+40; PLACE ON NATURAL GROUND TO
 A DISTANCE OF 0.6m BEYOND EDGE OF PROP. PAVEMENT
 QUANTITY = 2376 SM



*** BURY 900mm EQUALIZER PIPES
 0.15m AT BOTH ENDS AND
 PLACE ON A 0.00% GRADE**

NOTE: FOR PROFILE OF -L-, SEE SHEET NO. 35

04 SEP 2004 09:28
 R:\Projects\104101\104101.dwg
 10/17/04