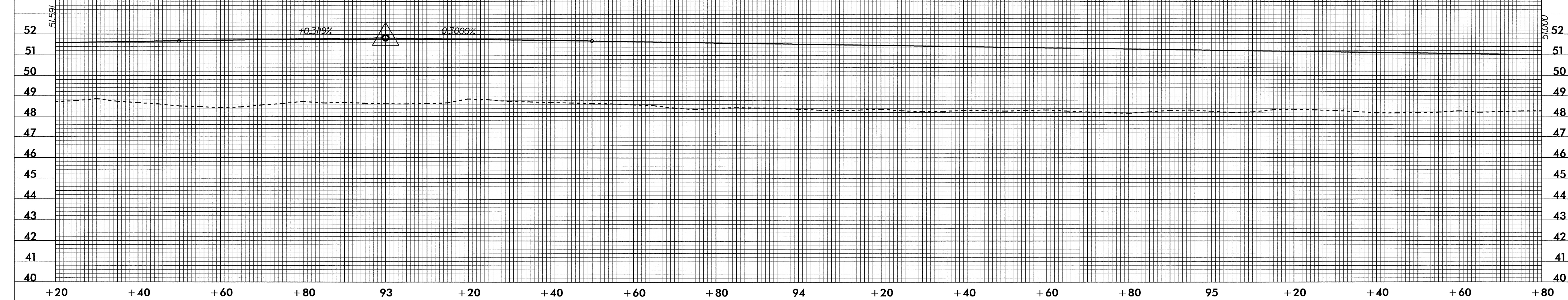


6/09/2004

DITCH LEGEND  
LEFT DITCH - - - - -

BM\*1 RR SPIKE IN BASE OF 200MM PIN OAK  
-L- STA.92+74.805 87.327M RT  
N 101471.945 E 585788.478 EL = 49.282

PI = 93+00.000  
EL = 51.840 m  
VC = 100 m  
K = 163



METRIC

PROJECT REFERENCE NO. R-0513BA SHEET NO. 28

ROADWAY DESIGN ENGINEER HYDRAULICS ENGINEER

5 0 10

CONST. REV. R/W REV.

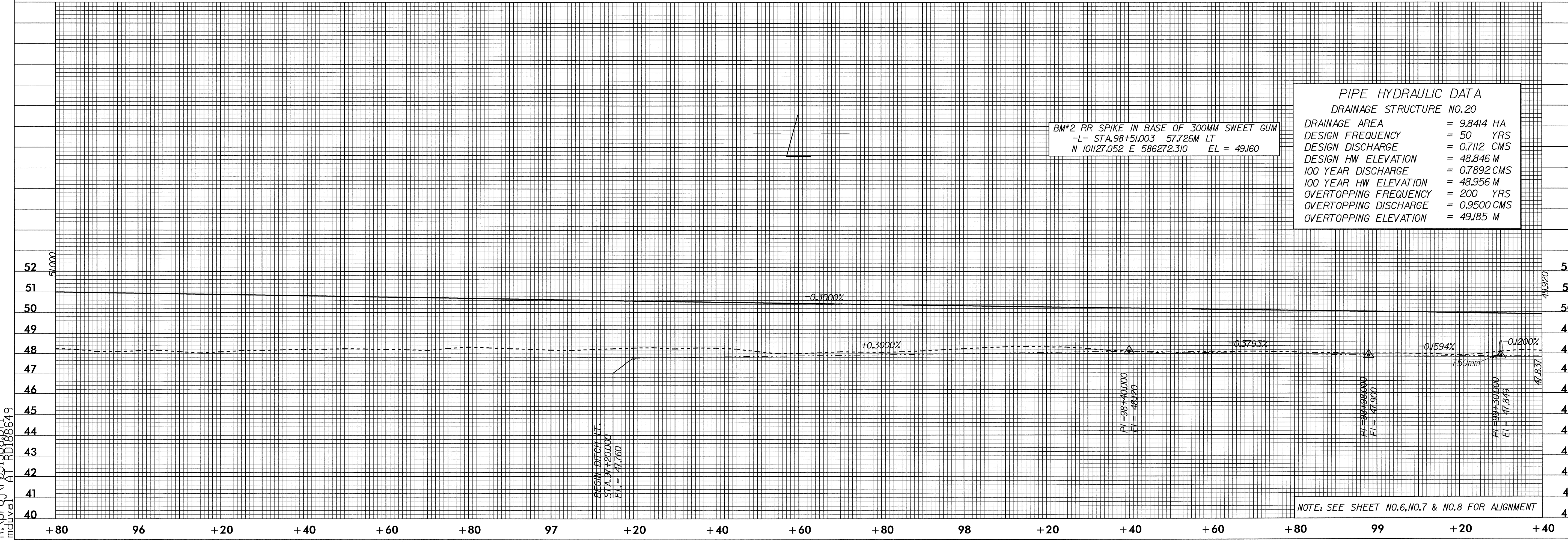
9-27-04

9-27-04

BM\*2 RR SPIKE IN BASE OF 300MM SWEET GUM  
-L- STA.98+51.003 57.726M LT  
N 101127.052 E 586272.310 EL = 49.160

PIPE HYDRAULIC DATA  
DRAINAGE STRUCTURE NO.20

DRAINAGE AREA	= 9.8414 HA
DESIGN FREQUENCY	= 50 YRS
DESIGN DISCHARGE	= 0.7112 CMS
DESIGN HW ELEVATION	= 48.846 M
100 YEAR DISCHARGE	= 0.7892 CMS
100 YEAR HW ELEVATION	= 48.956 M
OVERTOPPING FREQUENCY	= 200 YRS
OVERTOPPING DISCHARGE	= 0.9500 CMS
OVERTOPPING ELEVATION	= 49.185 M



BEGIN DITCH LT.  
STA.97+20.000  
EL = 47.760

PI = 98+40.000  
EL = 48.120

PI = 98+98.000  
EL = 47.900

PI = 99+50.000  
EL = 47.845

NOTE: SEE SHEET NO.6, NO.7 & NO.8 FOR ALIGNMENT

20-SEP-2004 13:36  
R:\proj\1\05138\p8f1  
md\vol1 AT RD188649