
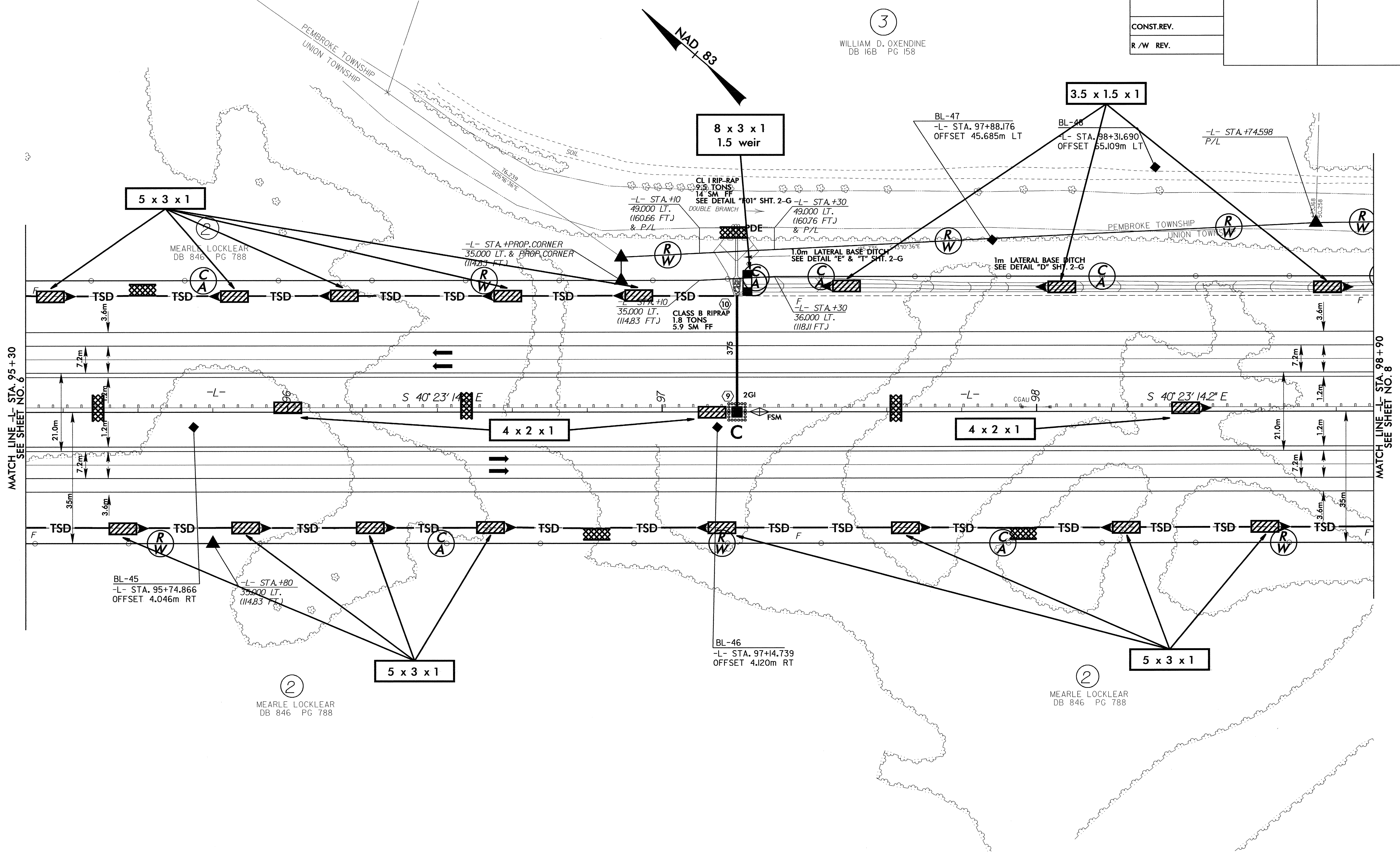


8/17/93
mhaugach_at

 5 0 10 CONST.REV. R/W REV.	PROJECT REFERENCE NO. R-05/3BA	SHEET NO. EC-32/CONST.7
	R/W SHEET NO.	
ROADWAY DESIGN ENGINEER	HYDRAULICS ENGINEER	



3
WILLIAM D. OXENDINE
DB 16B PG 158

2
MEARLE LOCKLEAR
DB 846 PG 788

2
MEARLE LOCKLEAR
DB 846 PG 788

NOTE: FOR PROFILE OF -L-, SEE SHEET NO.28

REVISIONS