

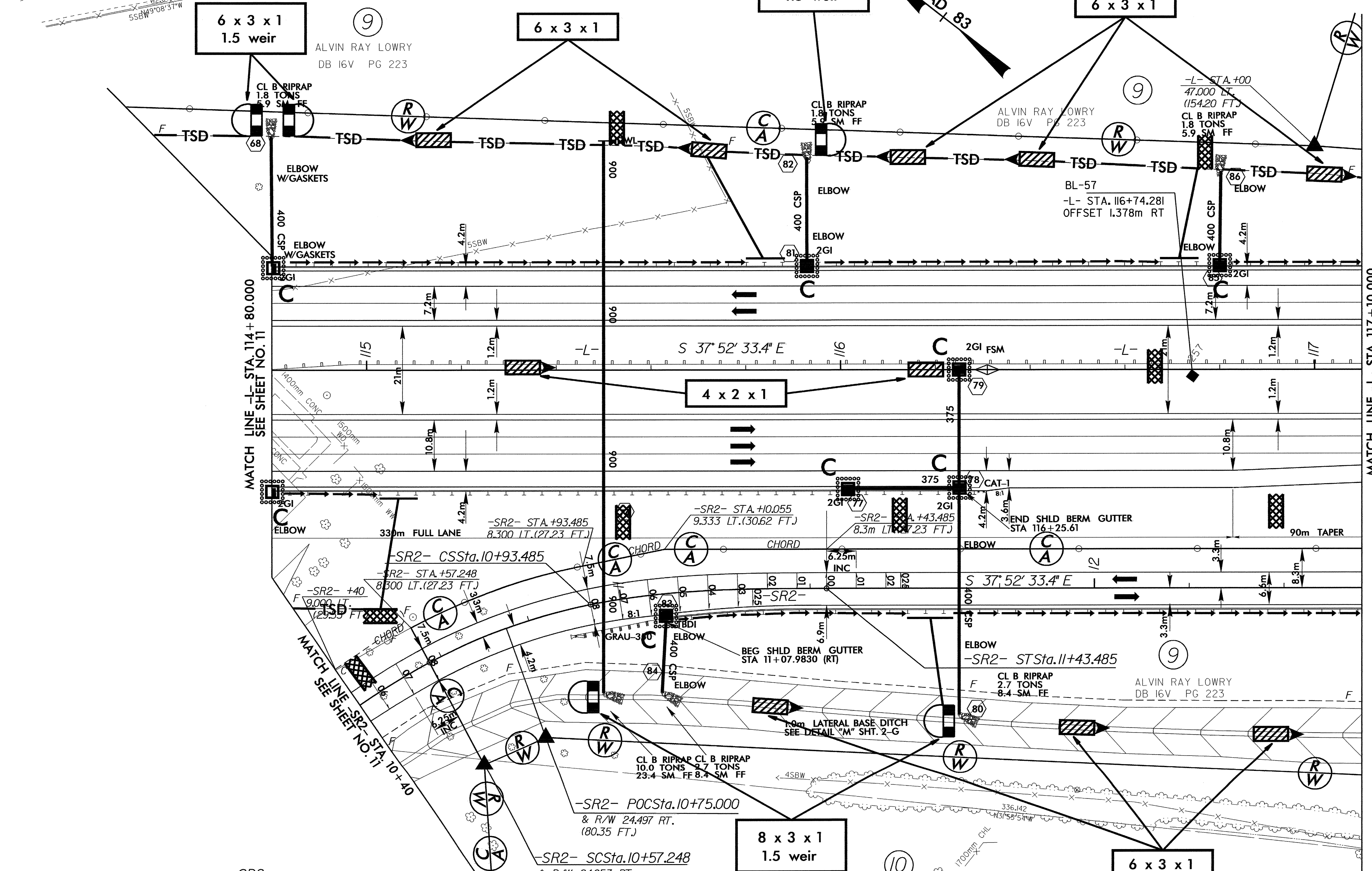
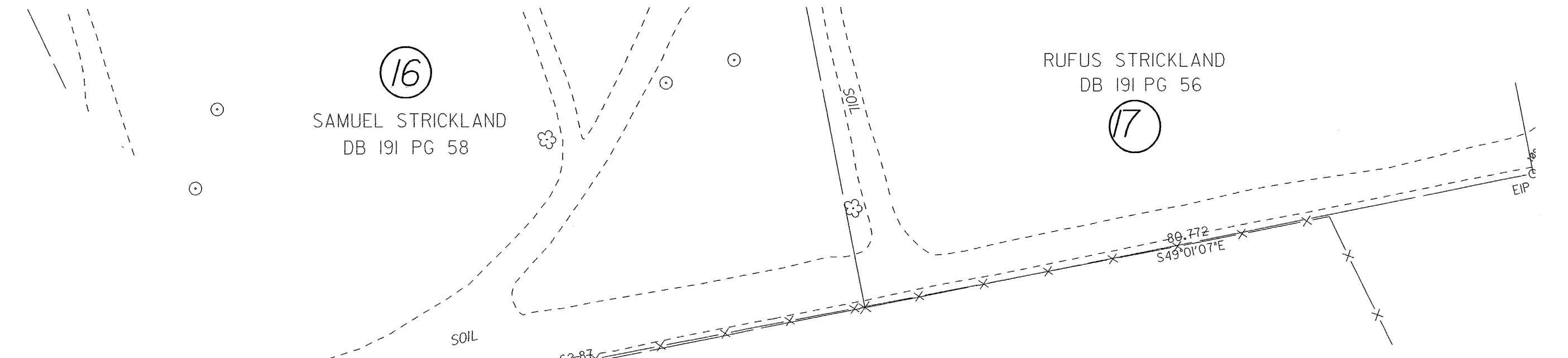
8/07/93

**METRIC**

PROJECT REFERENCE NO. *R-0513BA* SHEET NO. *EC-37/CONST.12*  
 R/W SHEET NO. *R/W*  
 ROADWAY DESIGN ENGINEER HYDRAULICS ENGINEER

CONST. REV.  
 R/W REV.

5 0 10



-SR2-

Pls Sta 10+40.652	Pl Sta 10+75.495	Pls Sta 11+02.6
Os = 1° 27' 33.0"	Δ = 16° 36' 35.6" (RT)	Os = 1° 27' 33.0"
Ls = 50.000	L = 36.237	Ls = 50.000
LT = 33.403	T = 18.247	LT = 33.403
ST = 16.730	R = 125.000	ST = 16.730
	SE = 0.08	

NOTE: FOR PROFILE OF -L-, SEE SHEET NO. 31  
 FOR PROFILE OF -SR2-, SEE SHEET NO. 45

MATCH LINE -L- STA. 117 + 10.000  
 SEE SHEET NO. 13