

**METRIC**

5 0 10

CONST. REV.

R / W REV.

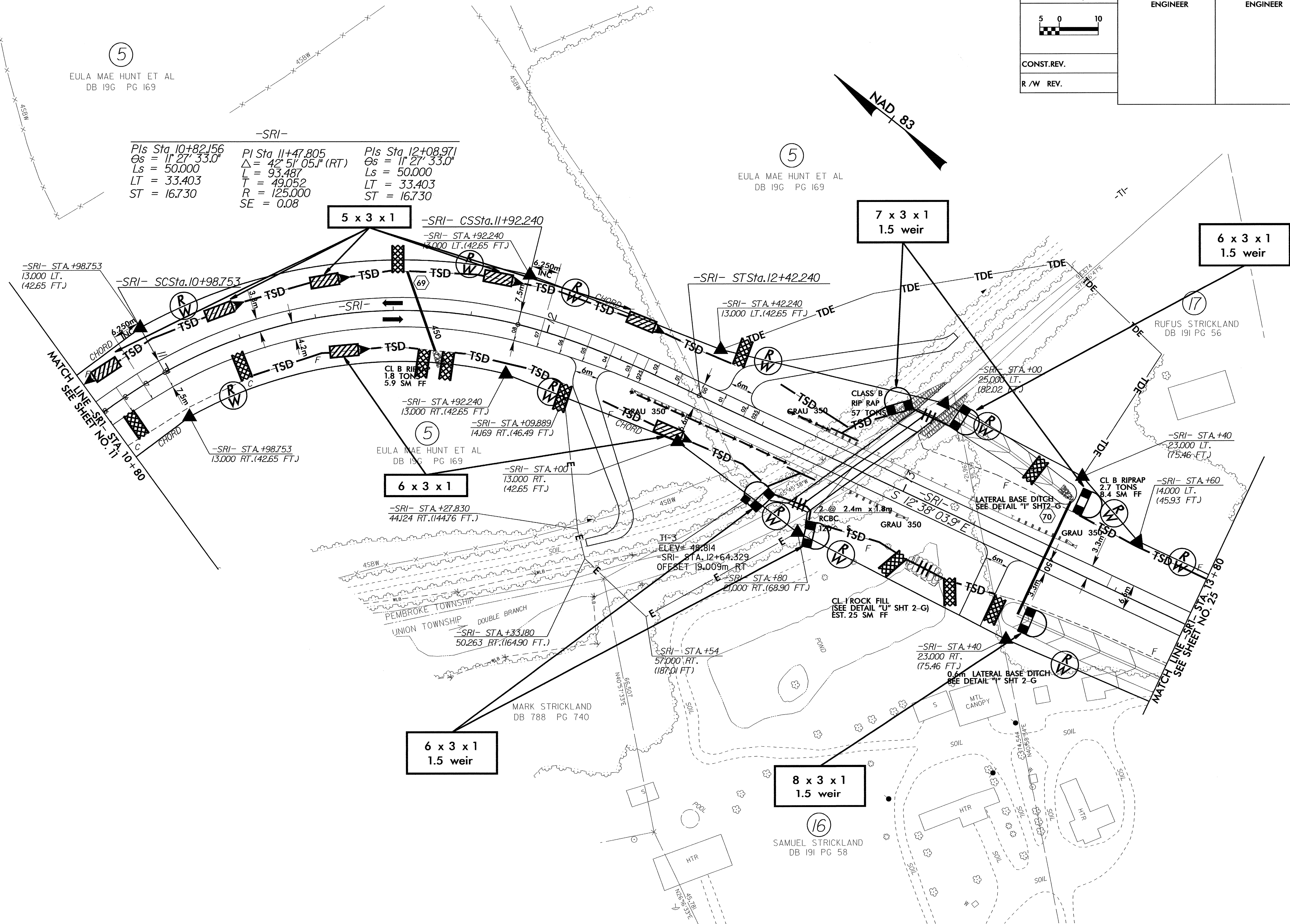
PROJECT REFERENCE NO.	SHEET NO.
R-0513BA	EC-51/CONST.24
R / W SHEET NO.	
ROADWAY DESIGN ENGINEER	HYDRAULICS ENGINEER

5  
EULA MAE HUNT ET AL  
DB 19G PG 169

5  
EULA MAE HUNT ET AL  
DB 19G PG 169

-SRI-

Pls Sta. 10+82.156	PI Sta. 11+47.805	Pls Sta. 12+08.971
$\Theta_s = 1^\circ 27' 33.0''$	$\Delta = 42^\circ 51' 05.1''$ (RT)	$\Theta_s = 1^\circ 27' 33.0''$
$L_s = 50.000$	$L = 93.487$	$L_s = 50.000$
$LT = 33.403$	$T = 49.052$	$LT = 33.403$
$ST = 16.730$	$R = 125.000$	$ST = 16.730$
	$SE = 0.08$	



NOTE: FOR PROFILE OF -SRI-, SEE SHEET NO. 42  
FOR CULVERT PLANS AND DIVERSION CHANNEL PLANS  
SEE SHEET C - C