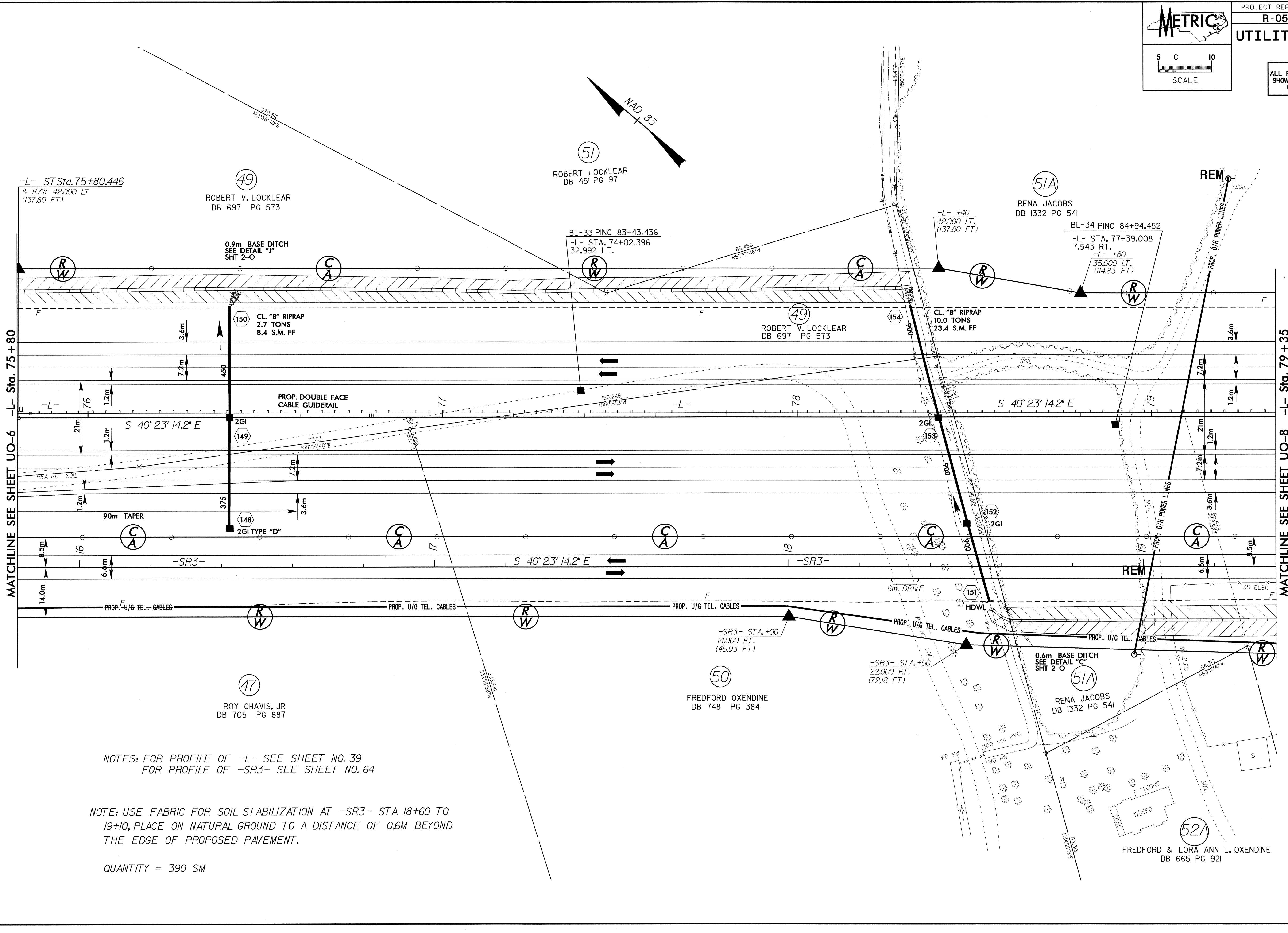


UTILITIES BY OTHERS

NOTE: ALL PROPOSED UTILITY WORK SHOWN ON THIS SHEET WILL BE DONE BY OTHERS

15-JUN-2004 16:21 U:\7-0513as21\psh egodbo01



NOTES: FOR PROFILE OF -L- SEE SHEET NO. 39
FOR PROFILE OF -SR3- SEE SHEET NO. 64

NOTE: USE FABRIC FOR SOIL STABILIZATION AT -SR3- STA 18+60 TO 19+10, PLACE ON NATURAL GROUND TO A DISTANCE OF 0.6M BEYOND THE EDGE OF PROPOSED PAVEMENT.

QUANTITY = 390 SM