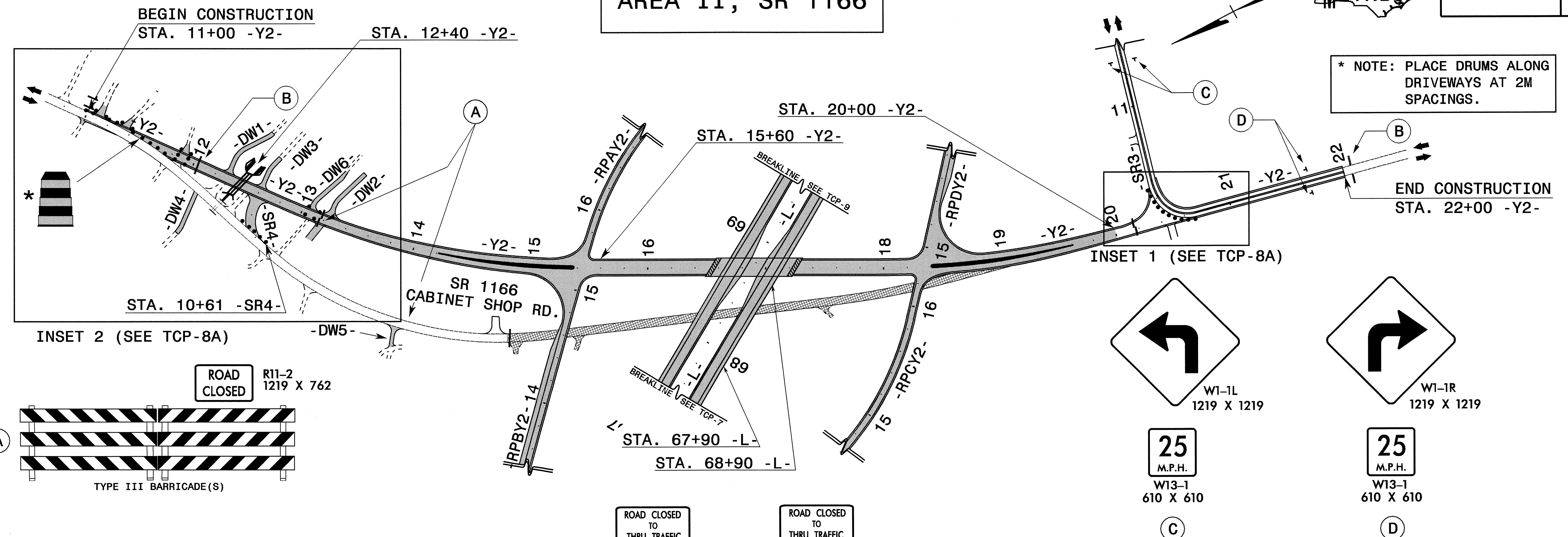


# AREA II, SR 1166

PROJ. REFERENCE NO.	SHEET NO.
R-0513A	TCP-8



## PHASE I

NOTE: AREAS II AND III SHALL NOT BE CONSTRUCTED SIMULTANEOUSLY, BUT CAN BE CONSTRUCTED IN ANY ORDER.

**WORK IN AREA II, STEPS 1 THRU 7 MUST BE COMPLETED IN 480 CONSECUTIVE CALENDAR DAYS (SEE ICT'S FOR LIQUIDATED DAMAGES).**

NOTE: WORK IN AREA II, STEPS 1 THRU 7 NEED TO BE COMPLETED BEFORE WORK IN AREA 3, STEPS 2 THRU 4 CAN BEGIN.

NOTE: USING BARRICADES, CLOSE ALL SOIL ROADS TO THE LEFT OF -Y2- (SR 1166), AND DETOUR OFFSITE TO LD DR. AS NEEDED TO CONSTRUCT -Y2-, ALL RAMPS, AND -SR3-. RE-OPEN SOIL ROADS WHEN CONSTRUCTION OF SOIL ROADS ARE COMPLETED OR ACCESS CAN BE MAINTAINED WITH INCIDENTAL STONE.

**STEP 1)**  
 USING ROADWAY STANDARD DRAWING (RSD#) 1101.02, SHEET 1 OF 7 AS NEEDED, BEGIN CONSTRUCTION OF THE FOLLOWING UP TO THE EXISTING EDGE AND ELEVATION OF SR 1166 (-Y2-):

- Y2- FROM STA. 11+00 -Y2- TO STA. 12+00 -Y2-. MAINTAIN ALL DRIVEWAYS WITH INCIDENTAL STONE.
- SR4- FROM STA. 10+00 -SR4- TO STA. 10+61 -SR4-

AWAY FROM TRAFFIC BEGIN CONSTRUCTION OF THE FOLLOWING:

- Y2- FROM STA. 12+00 -Y2- TO STA. 15+60 -Y2-
- DW1-, -DW2-, -DW3-, -DW4-, AND -DW6-
- INSTALL PIPE EXTENSIONS ON EXISTING PIPE AT STA. 12+40 -Y2- +/- AND INSTALL PROPOSED CULVERT (USE RSD 1101.04 AS NEEDED) (SEE RDWY PLANS)
- RPAY2-
- RPBY2- FROM STA. 10+00 -RPBY2- TO STA. 14+20 -RPBY2-
- RPCY2- FROM STA. 10+00 -RPCY2- TO STA. 15+80 -RPCY2-
- RPDY2-

CONSTRUCT -DW5- UP TO AND INCLUDING THE FINAL SURFACE COURSE.

**STEP 2)**  
 INSTALL DETOUR SIGNS ALONG US 74, NC 710, AND SR 1153 AND USING RSD# 1101.03, SHEET 1 OF 9 (OMIT "ROAD CLOSED AHEAD" SIGN LOCATED 1 KM FROM "ROAD CLOSED 1000 FT" SIGN), CLOSE -Y2- TO TRAFFIC AND MAINTAIN DRIVEWAY ACCESS WITH DRUMS AND INCIDENTAL STONE (SEE TCP-11).

BEGIN CONSTRUCTION OF THE FOLLOWING (MAINTAIN ACCESS TO ALL DRIVEWAYS ON -SR3- WITH INCIDENTAL STONE):

- Y2- INCLUDING THE BRIDGE FROM STA. 15+60 -Y2- TO STA. 22+00 -Y2- (REMOVE EXISTING SR 1166 AS NEEDED)
- SR3-
- RPBY2- FROM STA. 14+20 -RPBY2- TO -Y2-
- RPCY2- FROM STA. 15+80 -RPCY2- TO -Y2-

**STEP 3)**  
 USING FLAGGERS AS NEEDED, COMPLETE CONSTRUCTION OF THE FOLLOWING UP TO AND EXCLUDING THE FINAL LAYER OF SURFACE COURSE:

- Y2- FROM STA. 12+00 -Y2- TO STA. 13+40 -Y2- INCLUDING THE CULVERT AT STA. 12+40 -Y2-
- Y2- FROM STA. 20+00 -Y2- TO STA. 22+00 -Y2-
- DW1-, DW2-, DW3-, AND -DW6-
- SR3-
- SR4-
- WEDGE/WIDEN -Y2- FROM STA. 11+00 -Y2- TO STA. 11+78 +/- -Y2- AND WEDGE EXISTING SR 1166 ALONG PROPOSED -Y2- AS NEEDED TO MAINTAIN TRAFFIC.

INSTALL TEMPORARY MARKINGS AND MARKERS ON -SR3- AND -Y2- FROM STA. 20+40 -Y2- TO STA. 22+00 -Y2- AS SHOWN ON TCP-8 AND INSET 1.

**STEP 4)**  
 USING BARRICADES AND DRUMS, OPEN THE FOLLOWING TO LOCAL TRAFFIC:

- Y2- FROM STA. 11+00 -Y2- TO STA. 13+40 -Y2-
- Y2- FROM STA. 20+40 -Y2- TO STA. 22+00 -Y2-
- SR3-
- SR4-

USING RSD# 1101.04 AS NEEDED, CLOSE AND REMOVE EXISTING SR 1166 FROM STA. 11+33 +/- -Y2- TO -SR4- AND COMPLETE CONSTRUCTION OF THE CULVERT SYSTEM AT STA 12+40 -Y2- +/- AND -DW4-.

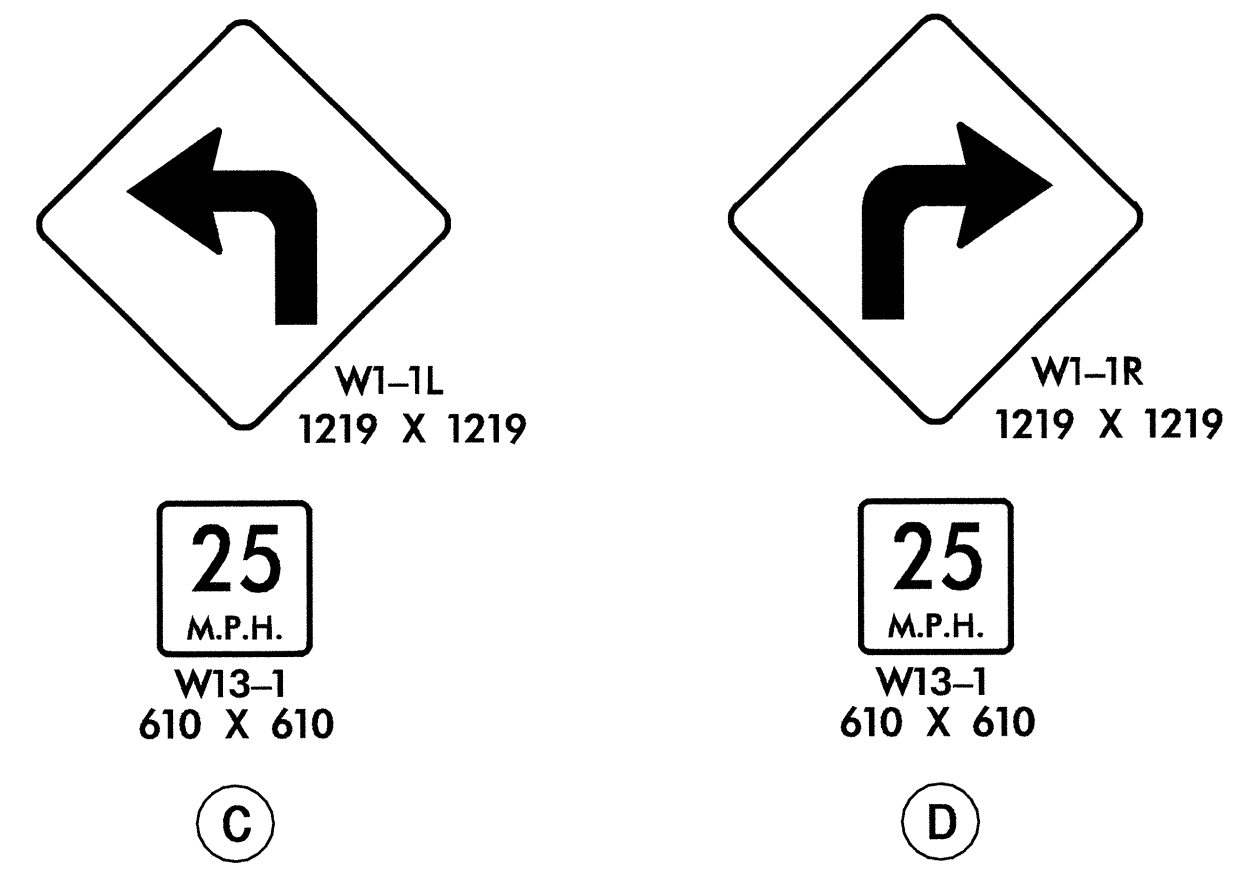
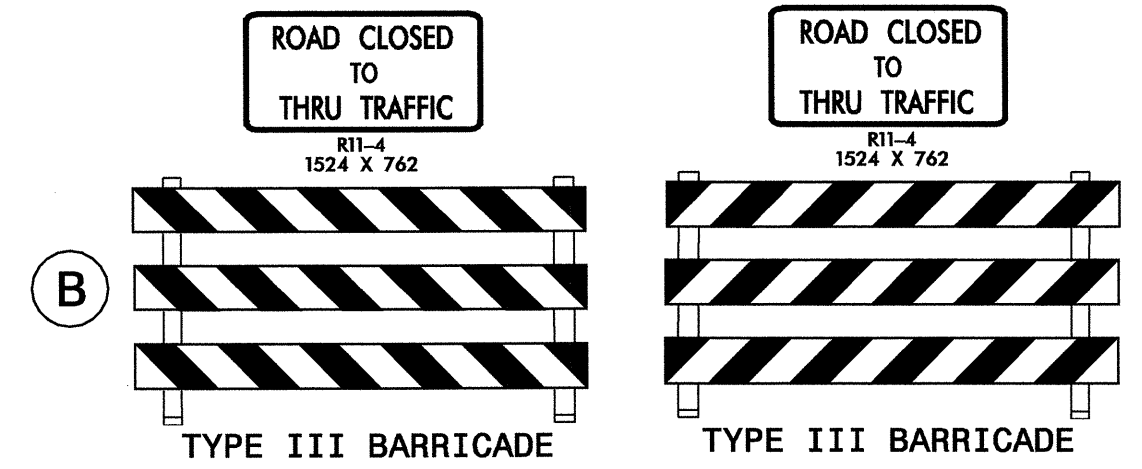
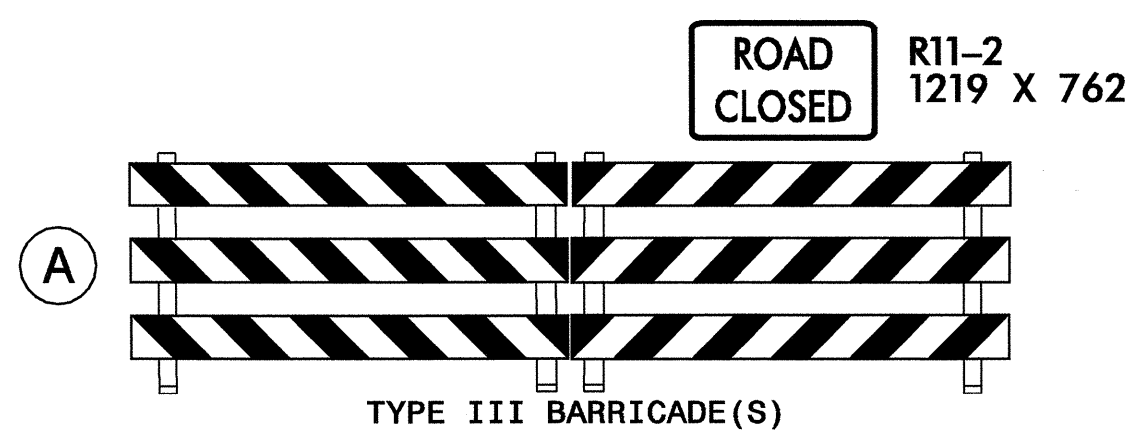
**STEP 5)**  
 COMPLETE CONSTRUCTION OF THE FOLLOWING UP TO AND EXCLUDING THE FINAL SURFACE COURSE:

- Y2- FROM STA. 13+40 -Y2- TO STA. 20+00 -Y2-, INCLUDING THE MONOLITHIC CONCRETE ISLANDS.
- ALL RAMPS

**STEP 6)**  
 USING RSD# 1101.02, SHEET 1 OF 7 AS NEEDED, INSTALL THE FINAL LAYER OF SURFACE COURSE, FINAL PAVEMENT MARKINGS, AND FINAL MARKERS ON THE FOLLOWING:

- Y2- FROM STA. 11+00 -Y2- TO STA. 22+00 -Y2-
- SR3-
- SR4-

**STEP 7)**  
 RETAIN ALL BARRICADES AND DRUMS AT ALL RAMPS AND OPEN -Y2- AND -SR3- TO THRU TRAFFIC. REMOVE DETOUR SIGNING.



05-OCT-2004 16:28 W:\TCP\PhaseI\R0513A-TC-Tcp8-PhI.dgn dhayes AT TETC02272

APPROVED: <i>[Signature]</i> DATE: 10/10/03	<b>AREA II, PHASE I OVERVIEW AND PHASING</b>	
	SCALE: NONE	REVISIONS
	DATE: 10/03	
	DWG. BY: DAH	
	DESIGN BY: DAH	
REVIEWED BY: JDK		