

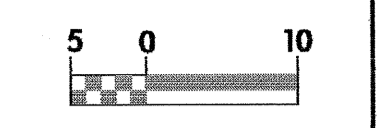
**CLEARING AND GRUBBING  
EROSION CONTROL FOR  
CONSTRUCTION SHEET 5**



PROJECT REFERENCE NO. R-0513A		SHEET NO. EC-4/CONST.5	
R/W SHEET NO.			
ROADWAY DESIGN ENGINEER		HYDRAULICS ENGINEER	
CONST.REV.		R/W REV.	

NOTE:  
PLACE TEMPORARY ROCK SEDIMENT DAMS TYPE-B AND TEMPORARY ROCK SILT CHECKS TYPE-A AT DRAINAGE OUTLETS.

NOTE:  
TEMPORARY SILT FENCE SHALL BE INSTALLED A MINIMUM OF 1 METER FROM TOE OF FILL IN WETLAND AREAS



**-SRI-**  
 Pls Sta 14+62.198 PI Sta 15+92.445 Pls Sta 17+21.973  
 $\Theta_s = 1^{\circ}14'05.4''$   $\Delta = 11^{\circ}11'04.7''$  (LT)  $\Theta_s = 1^{\circ}14'05.4''$   
 $L_s = 50.000$   $L = 226.442$   $L_s = 50.000$   
 $LT = 33.334$   $T = 113.582$   $LT = 33.334$   
 $ST = 16.667$   $R = 1,160.000$   $ST = 16.667$   
 $SE = 0.03$

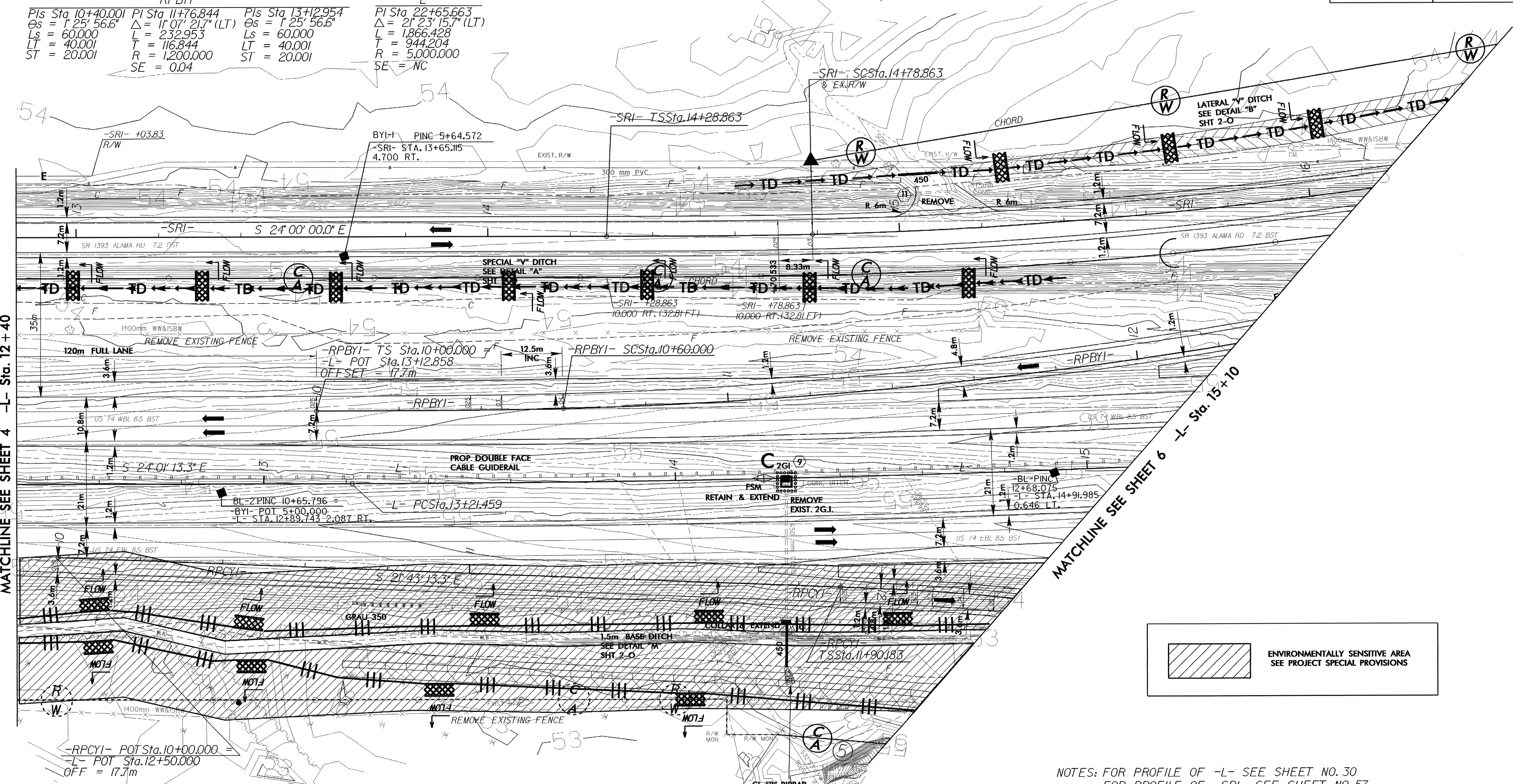
**-RPBYI-**  
 Pls Sta 10+40.001 PI Sta 11+76.844 Pls Sta 13+12.954  
 $\Theta_s = 1^{\circ}25'56.6''$   $\Delta = 11^{\circ}07'21.7''$  (LT)  $\Theta_s = 1^{\circ}25'56.6''$   
 $L_s = 60.000$   $L = 232.953$   $L_s = 60.000$   
 $LT = 40.001$   $T = 116.844$   $LT = 40.001$   
 $ST = 20.001$   $R = 1,200.000$   $ST = 20.001$   
 $SE = 0.04$

**-L-**  
 PI Sta 22+65.663  
 $\Delta = 21^{\circ}23'15.7''$  (LT)  
 $L = 1,866.428$   
 $T = 944.204$   
 $R = 5,000.000$   
 $SE = NC$

2  
MARY H. HORNE  
DB 79E PG 5I

MATCHLINE SEE SHEET 4 -L- Sta. 12 + 40

MATCHLINE SEE SHEET 6 -L- Sta. 15 + 10



ENVIRONMENTALLY SENSITIVE AREA  
SEE PROJECT SPECIAL PROVISIONS

NOTES:  
 FOR PROFILE OF -L- SEE SHEET NO. 30  
 FOR PROFILE OF -SRI- SEE SHEET NO. 57  
 FOR PROFILE OF -RPCYI- SEE SHEET NO. 46  
 FOR PROFILE OF -RPBYI- SEE SHEET NO. 44  
 FOR SHEAR POINT LAYOUT SEE SHEET 2-G  
 FOR DITCH DETAILS SEE SHEET 2-O

3  
A. F. HORNE, JR.  
DB 646 PG 78I

EX. RIGHT OF WAY  
& CONTROL OF ACCESS

20-SEP-2004 08:50  
at: \\nasaluna-110513ah\proj\0513as05.psh