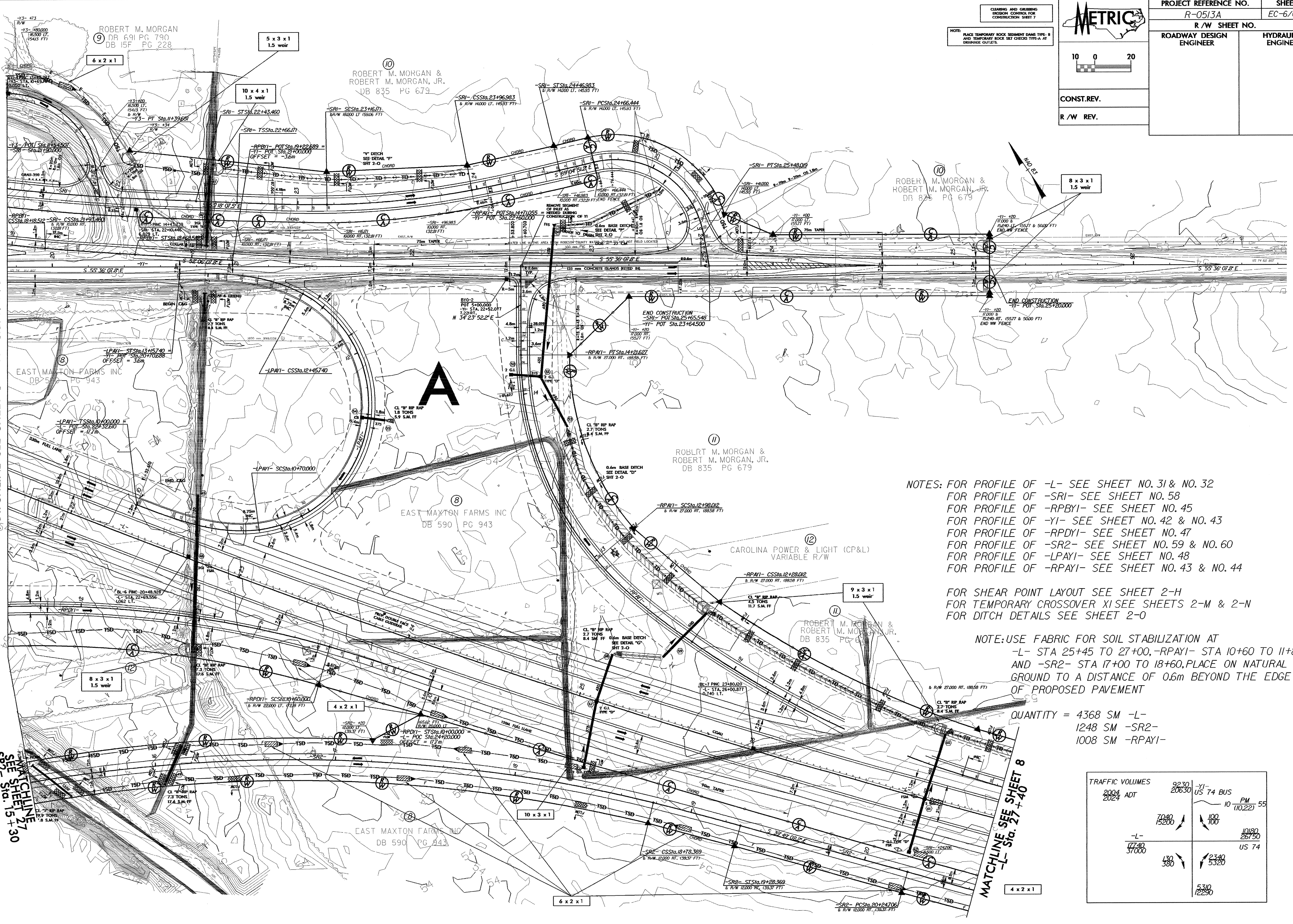


8/17/99

MATCHLINE SEE SHEET 6 -YI- Sta. 19 + 75

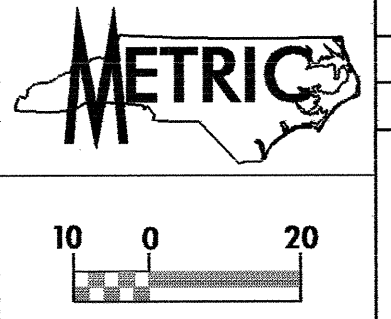
MATCHLINE SEE SHEET 7 -SR2- Sta. 15 + 30

MATCHLINE SEE SHEET 8 -L- Sta. 27 + 40



CLEANING AND GRUBBING
EROSION CONTROL FOR
CONSTRUCTION SHEET 7

NOTE:
PLACE TEMPORARY ROCK SEDIMENT DAMS TYPE-B
AND TEMPORARY ROCK SET CHECKS TYPE-A AT
DRAINAGE OUTLETS.



CONST. REV.

R/W REV.

PROJECT REFERENCE NO. R-0513A	SHEET NO. EC-6/CONST.7
R/W SHEET NO.	HYDRAULICS ENGINEER
ROADWAY DESIGN ENGINEER	

NOTES: FOR PROFILE OF -L- SEE SHEET NO. 31 & NO. 32
 FOR PROFILE OF -SRI- SEE SHEET NO. 58
 FOR PROFILE OF -RPBYI- SEE SHEET NO. 45
 FOR PROFILE OF -YI- SEE SHEET NO. 42 & NO. 43
 FOR PROFILE OF -RPDYI- SEE SHEET NO. 47
 FOR PROFILE OF -SR2- SEE SHEET NO. 59 & NO. 60
 FOR PROFILE OF -LPAVI- SEE SHEET NO. 48
 FOR PROFILE OF -RPAYI- SEE SHEET NO. 43 & NO. 44

FOR SHEAR POINT LAYOUT SEE SHEET 2-H
 FOR TEMPORARY CROSSOVER XI SEE SHEETS 2-M & 2-N
 FOR DITCH DETAILS SEE SHEET 2-O

NOTE: USE FABRIC FOR SOIL STABILIZATION AT
 -L- STA 25+45 TO 27+00, -RPAYI- STA 10+60 TO 11+80
 AND -SR2- STA 17+00 TO 18+60, PLACE ON NATURAL
 GROUND TO A DISTANCE OF 0.6m BEYOND THE EDGE
 OF PROPOSED PAVEMENT

QUANTITY = 4368 SM -L-
 1248 SM -SR2-
 1008 SM -RPAYI-

TRAFFIC VOLUMES		9230 20630	YI-74 BUS	10 PM (10,22)	55
2004 2024	ADT	7040 15200	100 100		
-L-		4740 37000	2340 5320	10180 26750	US 74
		470 380	5310 12250		