

PROJECT REFERENCE NO. R-0513A		SHEET NO. EC-30/CONST.5	
R/W SHEET NO.			
ROADWAY DESIGN ENGINEER		HYDRAULICS ENGINEER	
CONST. REV.		R/W REV.	

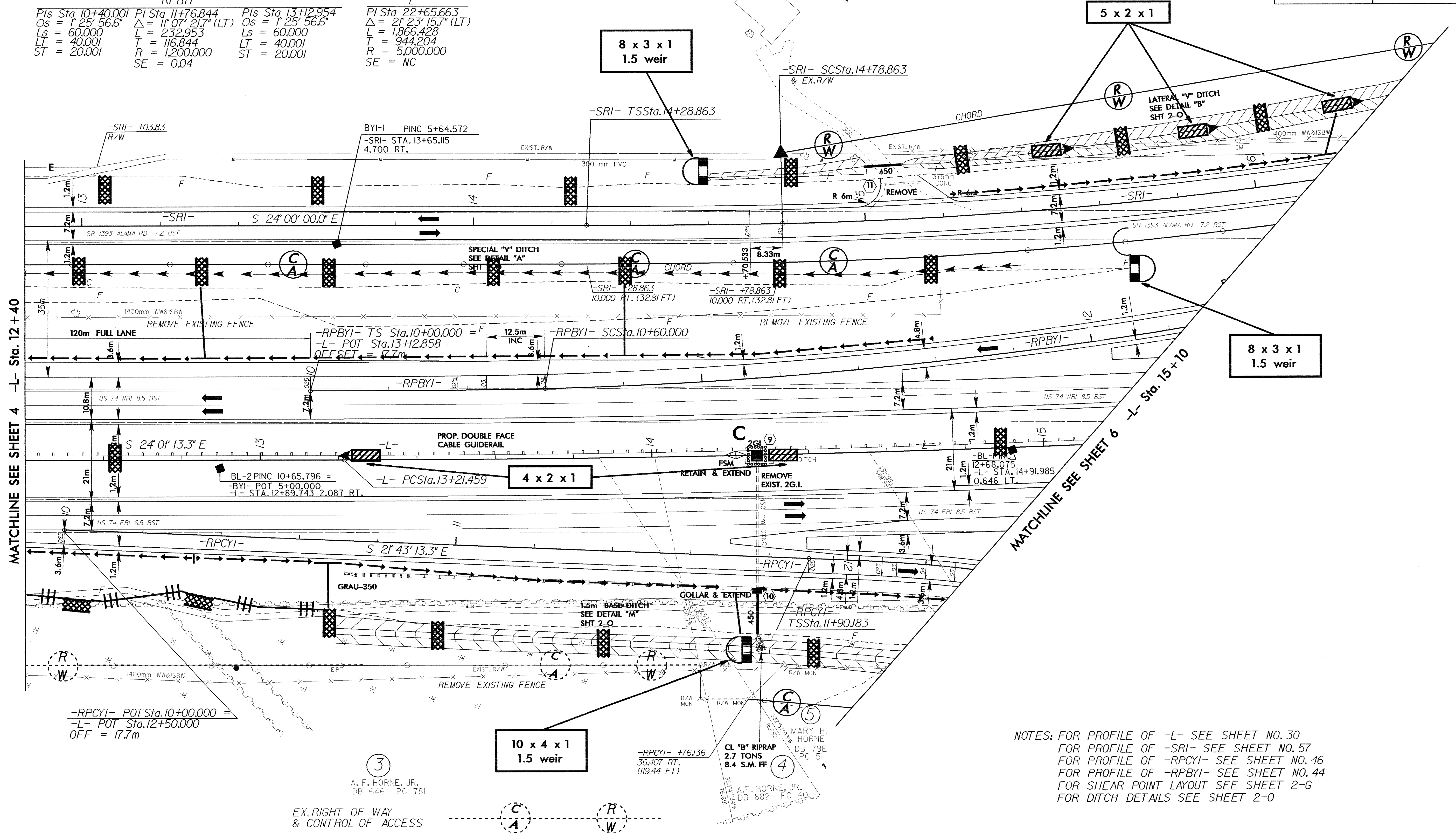
**-SRI-**  
 PIs Sta 14+62.198 PI Sta 15+92.445 PIs Sta 17+21.973  
 Os = 1' 14" 05.4" Δ = 1' 11" 04.7" (LT) Os = 1' 14" 05.4"  
 Ls = 50.000 L = 226.442 Ls = 50.000  
 LT = 33.334 T = 113.582 LT = 33.334  
 ST = 16.667 R = 1,160.000 ST = 16.667  
 SE = 0.03

**-RPBYI-**  
 PIs Sta 10+40.001 PI Sta 11+76.844 PIs Sta 13+12.954  
 Os = 1' 25" 56.6" Δ = 1' 07" 21.7" (LT) Os = 1' 25" 56.6"  
 Ls = 60.000 L = 232.953 Ls = 60.000  
 LT = 40.001 T = 116.844 LT = 40.001  
 ST = 20.001 R = 1,200.000 ST = 20.001  
 SE = 0.04

**-L-**  
 PI Sta 22+65.663  
 Δ = 2' 23" 15.7" (LT)  
 L = 1,866.428  
 T = 944.204  
 R = 5,000.000  
 SE = NC

2  
 MARY H. HORNE  
 DB 79E PG 51

NOTE:  
 TEMPORARY SILT FENCE SHALL BE INSTALLED A MINIMUM  
 OF 1 METER FROM TOE OF FILL IN WETLAND AREAS



MATCHLINE SEE SHEET 4 -L- Sta. 12+40

MATCHLINE SEE SHEET 6 -L- Sta. 15+10

-RPCYI- POT Sta. 10+00.000 =  
 -L- POT Sta. 12+50.000  
 OFF = 17.7m

3  
 A. F. HORNE, JR.  
 DB 646 PG 781

-RPCYI- +76J36  
 36.407 RT.  
 (119.44 FT)

CL "B" RIPRAP  
 2.7 TONS  
 8.4 S.M. FF

MARY H. HORNE  
 DB 79E  
 PG 51

NOTES: FOR PROFILE OF -L- SEE SHEET NO. 30  
 FOR PROFILE OF -SRI- SEE SHEET NO. 57  
 FOR PROFILE OF -RPCYI- SEE SHEET NO. 46  
 FOR PROFILE OF -RPBYI- SEE SHEET NO. 44  
 FOR SHEAR POINT LAYOUT SEE SHEET 2-G  
 FOR DITCH DETAILS SEE SHEET 2-O

30-532-2004\_08443  
 d:\v\m\horne\10513a\p\0513a\5.pdf  
 8/17/98