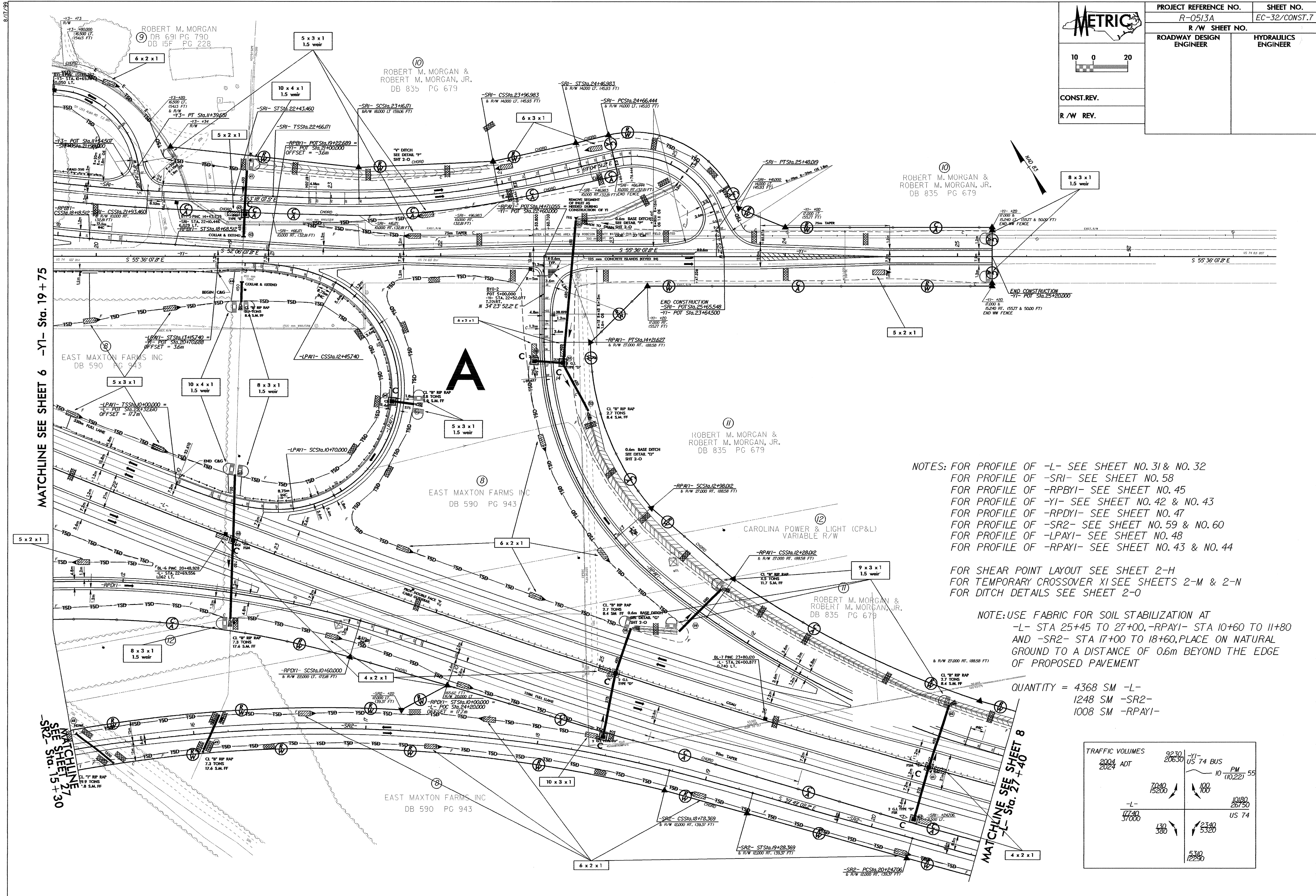


CONST. REV.

R/W REV.

PROJECT REFERENCE NO. R-0513A	SHEET NO. EC-32/CONST.7
R/W SHEET NO.	HYDRAULICS ENGINEER
ROADWAY DESIGN ENGINEER	



NOTES: FOR PROFILE OF -L- SEE SHEET NO. 31 & NO. 32
 FOR PROFILE OF -SRI- SEE SHEET NO. 58
 FOR PROFILE OF -RPBYI- SEE SHEET NO. 45
 FOR PROFILE OF -YI- SEE SHEET NO. 42 & NO. 43
 FOR PROFILE OF -RPDYI- SEE SHEET NO. 47
 FOR PROFILE OF -SR2- SEE SHEET NO. 59 & NO. 60
 FOR PROFILE OF -LPAYI- SEE SHEET NO. 48
 FOR PROFILE OF -RPAYI- SEE SHEET NO. 43 & NO. 44

FOR SHEAR POINT LAYOUT SEE SHEET 2-H
 FOR TEMPORARY CROSSOVER XI SEE SHEETS 2-M & 2-N
 FOR DITCH DETAILS SEE SHEET 2-O

NOTE: USE FABRIC FOR SOIL STABILIZATION AT
 -L- STA 25+45 TO 27+00, -RPAYI- STA 10+60 TO 11+80
 AND -SR2- STA 17+00 TO 18+60, PLACE ON NATURAL
 GROUND TO A DISTANCE OF 0.6m BEYOND THE EDGE
 OF PROPOSED PAVEMENT

QUANTITY = 4368 SM -L-
 1248 SM -SR2-
 1008 SM -RPAYI-

TRAFFIC VOLUMES		9230 20630	-YI- 74 BUS 10 (10.22)
2004 2024	ADT	7940 15200	1000 1000
-L-		10180 26750	US 74
		430 380	2340 5320
			5310 12250

MATCHLINE SEE SHEET 6 -YI- Sta. 19+75

MATCHLINE SEE SHEET 7 -SR2- Sta. 15+30

MATCHLINE SEE SHEET 8 -L- Sta. 27+40