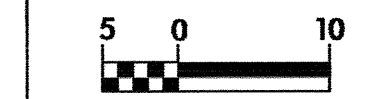


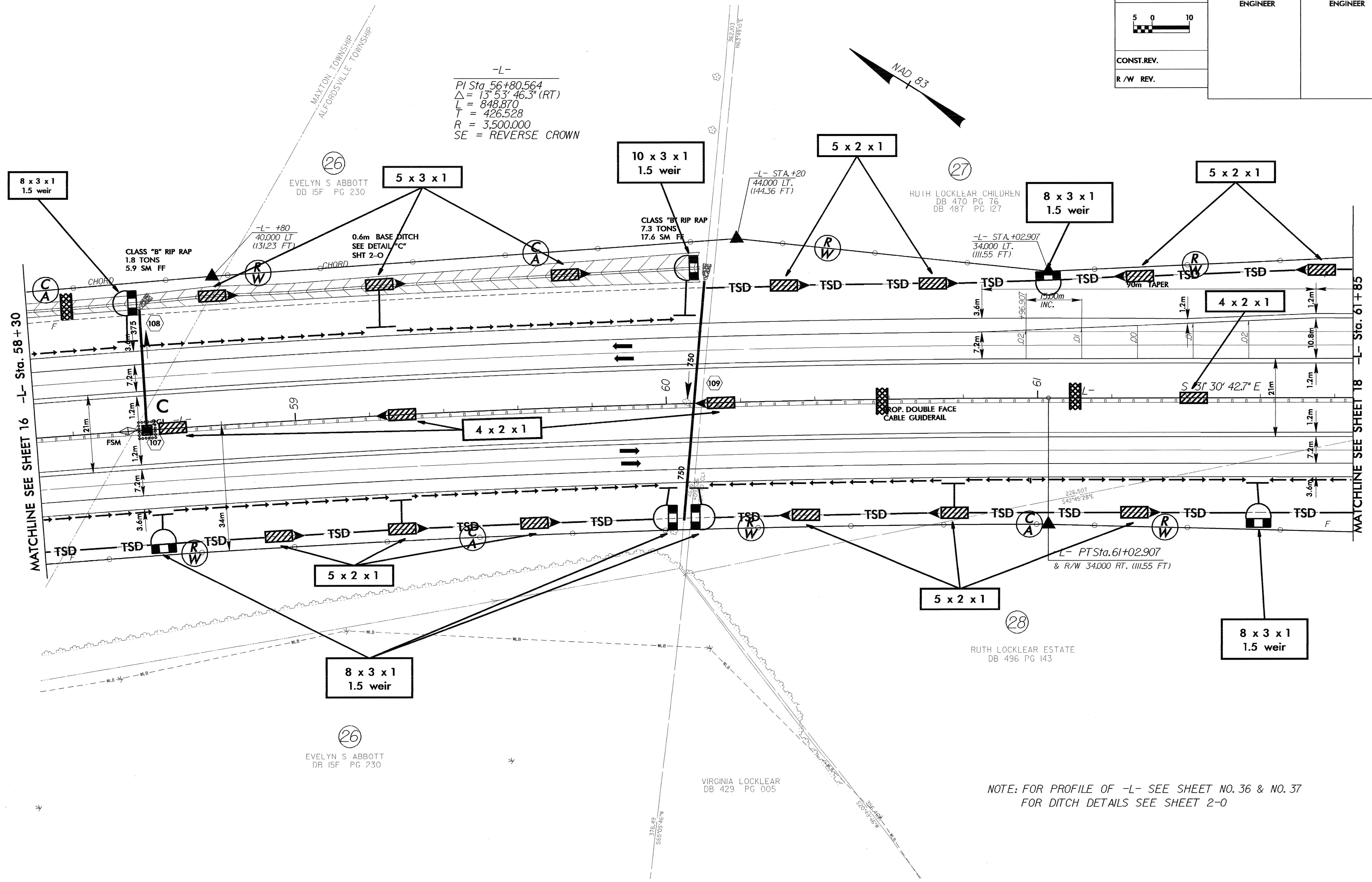
8/17/99



PROJECT REFERENCE NO. R-0513A	SHEET NO. EC-42/CONST.17
R/W SHEET NO.	
ROADWAY DESIGN ENGINEER	HYDRAULICS ENGINEER
CONST. REV.	
R/W REV.	



-L-  
 PI Sta 56+80.564  
 $\Delta = 13^{\circ} 53' 46.3" (RT)$   
 $L = 848.870$   
 $T = 426.528$   
 $R = 3,500.000$   
 SE = REVERSE CROWN



NOTE: FOR PROFILE OF -L- SEE SHEET NO. 36 & NO. 37  
 FOR DITCH DETAILS SEE SHEET 2-0

mhaugsch AT