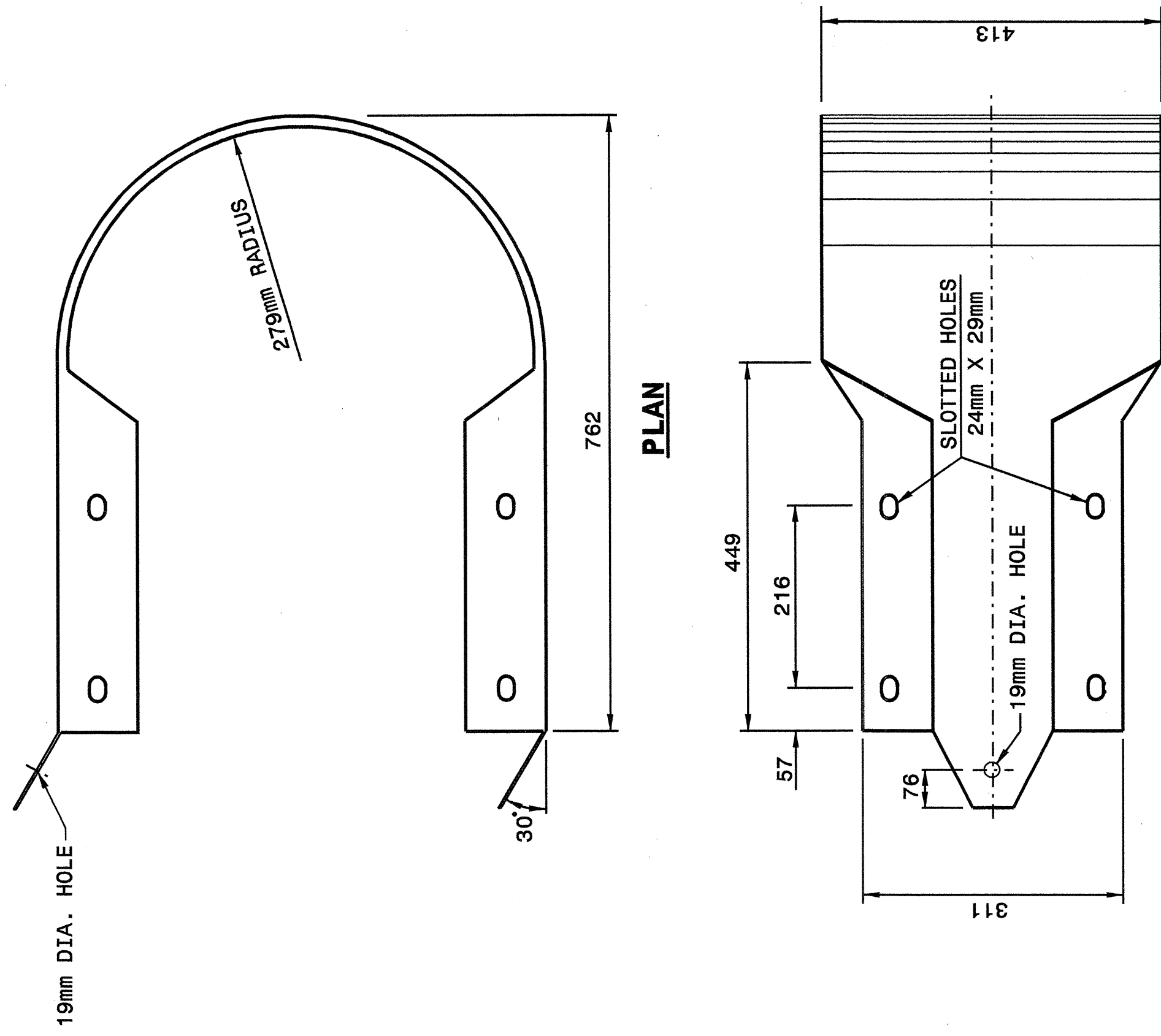




STATE OF NORTH CAROLINA  
DEPT. OF TRANSPORTATION  
DIVISION OF HIGHWAYS  
RALEIGH, N.C.

METRIC DETAIL DRAWING FOR  
**GUARDRAIL INSTALLATION**

SHEET 7 OF 7  
**862D02**



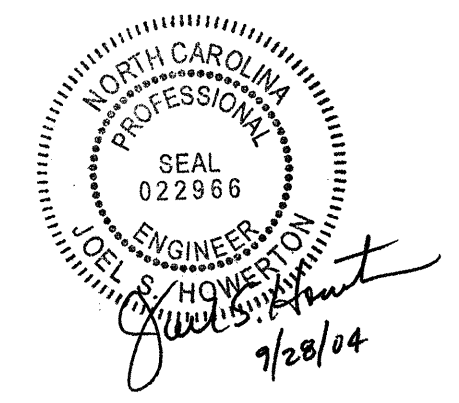
**ELEVATION**  
**BUFFERED END SECTION**

Note: drawing is dimensioned in millimeters unless otherwise depicted within the drawing.

STATE OF NORTH CAROLINA  
DEPT. OF TRANSPORTATION  
DIVISION OF HIGHWAYS  
RALEIGH, N.C.

METRIC DETAIL DRAWING FOR  
**GUARDRAIL INSTALLATION**

SHEET 7 OF 7  
**862D02**



**DESIGN SERVICES UNIT  
STANDARDS AND SPECIAL DESIGN**  
Office 919-250-4128 FAX 919-250-4119

**SEE PLATE FOR TITLE**

ORIGINAL BY: 2002 STD.862.02 DATE: \_\_\_\_\_  
 MODIFIED BY: F.E. WARD DATE: 02-09-03  
 CHECKED BY: *[Signature]* DATE: 5-22  
 FILE SPEC.: /usr/stds/02stds/11/metric/86202/862d02m.dgn

20-MAY-2003 07:54  
 W:\Special Details\erroward\stds\02\Stds to Special Details\metric\86202\0862d02m.dgn  
 .spell - AT DSTV9510